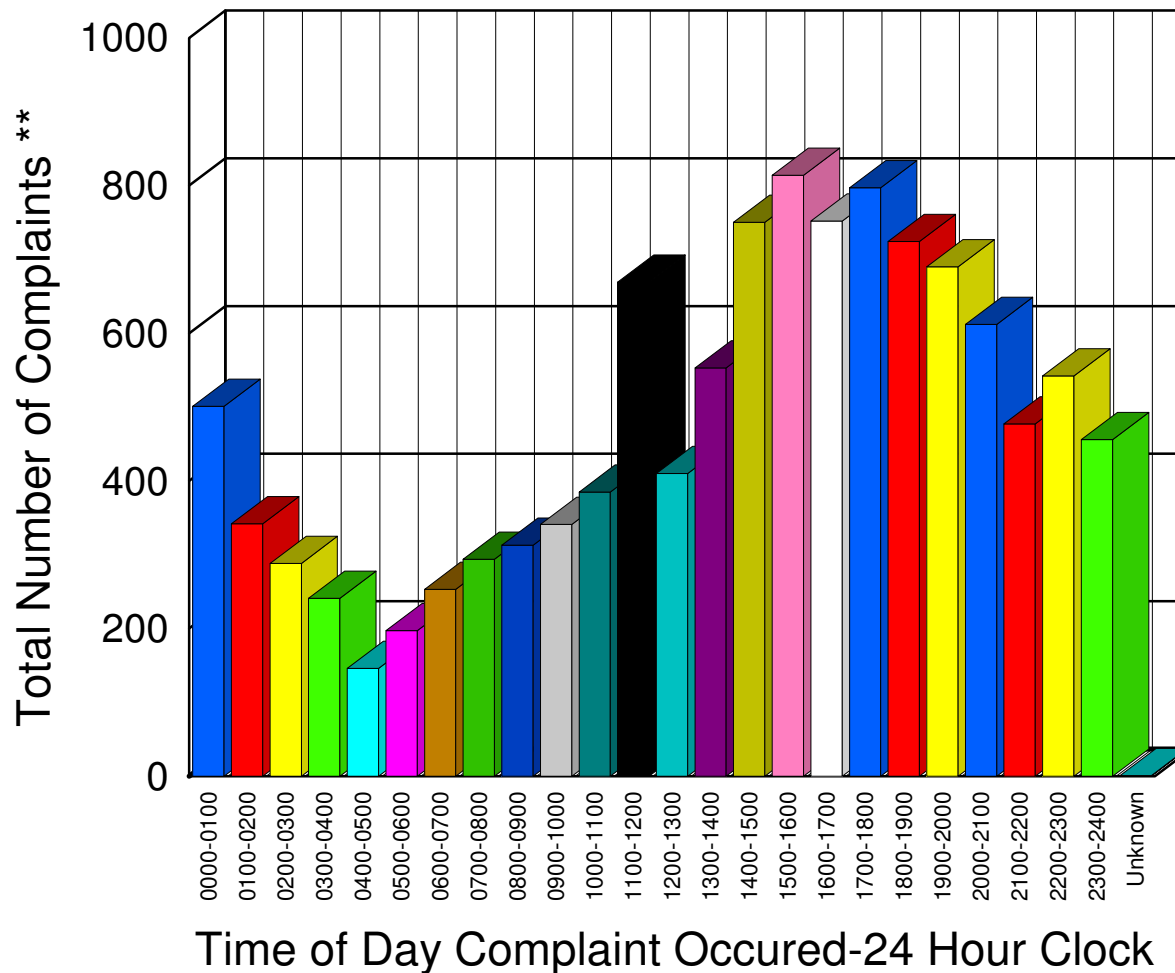


Muskegon County Sheriff's Office

Listing of Offense Reports-- 01/01/2006 to 12/31/2006

0000-0100	501
0100-0200	342
0200-0300	288
0300-0400	241
0400-0500	146
0500-0600	197
0600-0700	253
0700-0800	294
0800-0900	313
0900-1000	341
1000-1100	385
1100-1200	669
1200-1300	410
1300-1400	553
1400-1500	750
1500-1600	814
1600-1700	752
1700-1800	797
1800-1900	724
1900-2000	690
2000-2100	612
2100-2200	477
2200-2300	542
2300-2400	456
Unknown	1

Total 11,548

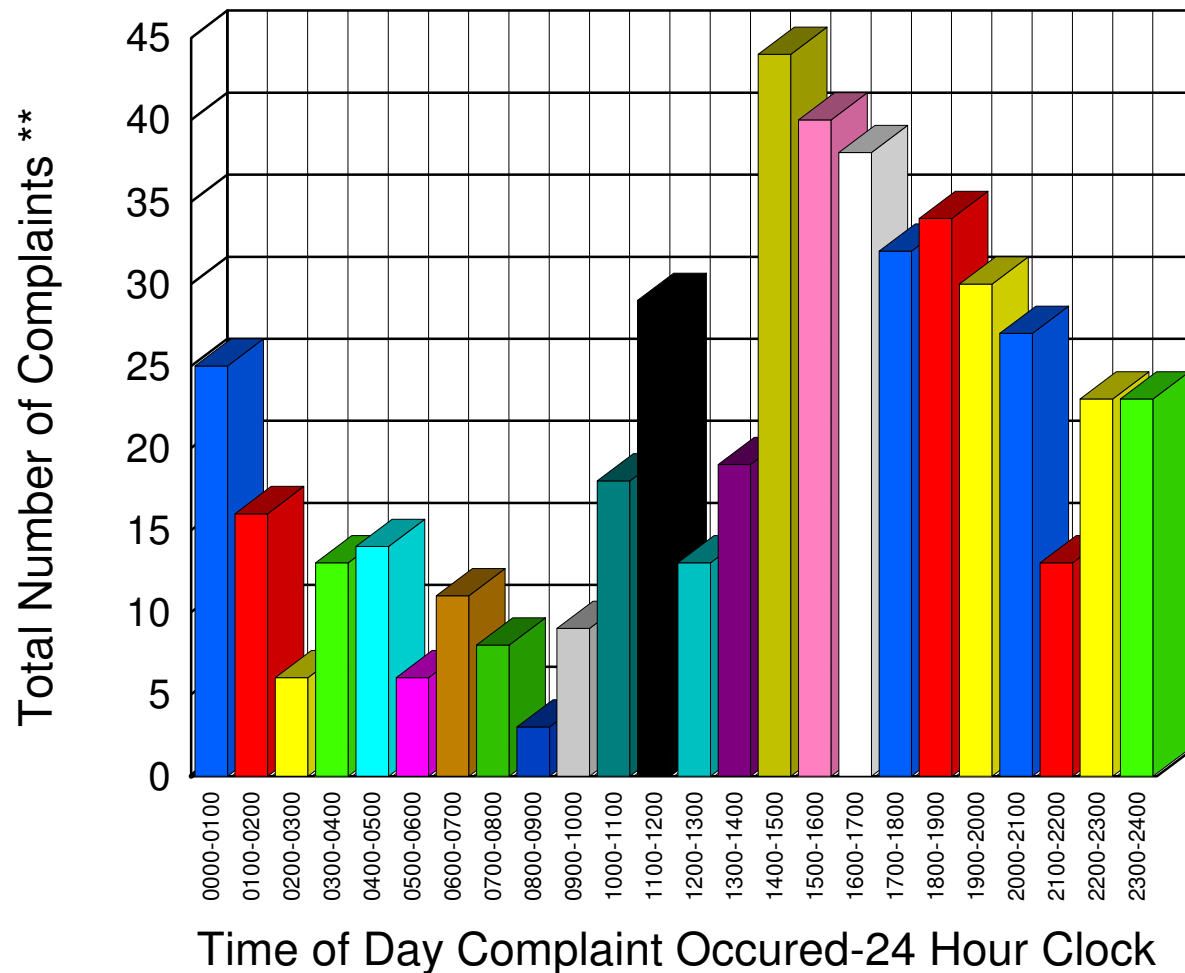


** Complaints taken by Muskegon Sheriff's Office

Muskegon County Sheriff's Office

Listing of Offense Reports--Blue Lake Township 01/01/2006 to 12/30/2006

0000-0100	25
0100-0200	16
0200-0300	6
0300-0400	13
0400-0500	14
0500-0600	6
0600-0700	11
0700-0800	8
0800-0900	3
0900-1000	9
1000-1100	18
1100-1200	29
1200-1300	13
1300-1400	19
1400-1500	44
1500-1600	40
1600-1700	38
1700-1800	32
1800-1900	34
1900-2000	30
2000-2100	27
2100-2200	13
2200-2300	23
2300-2400	23
<hr/>	
<hr/>	
Total	494



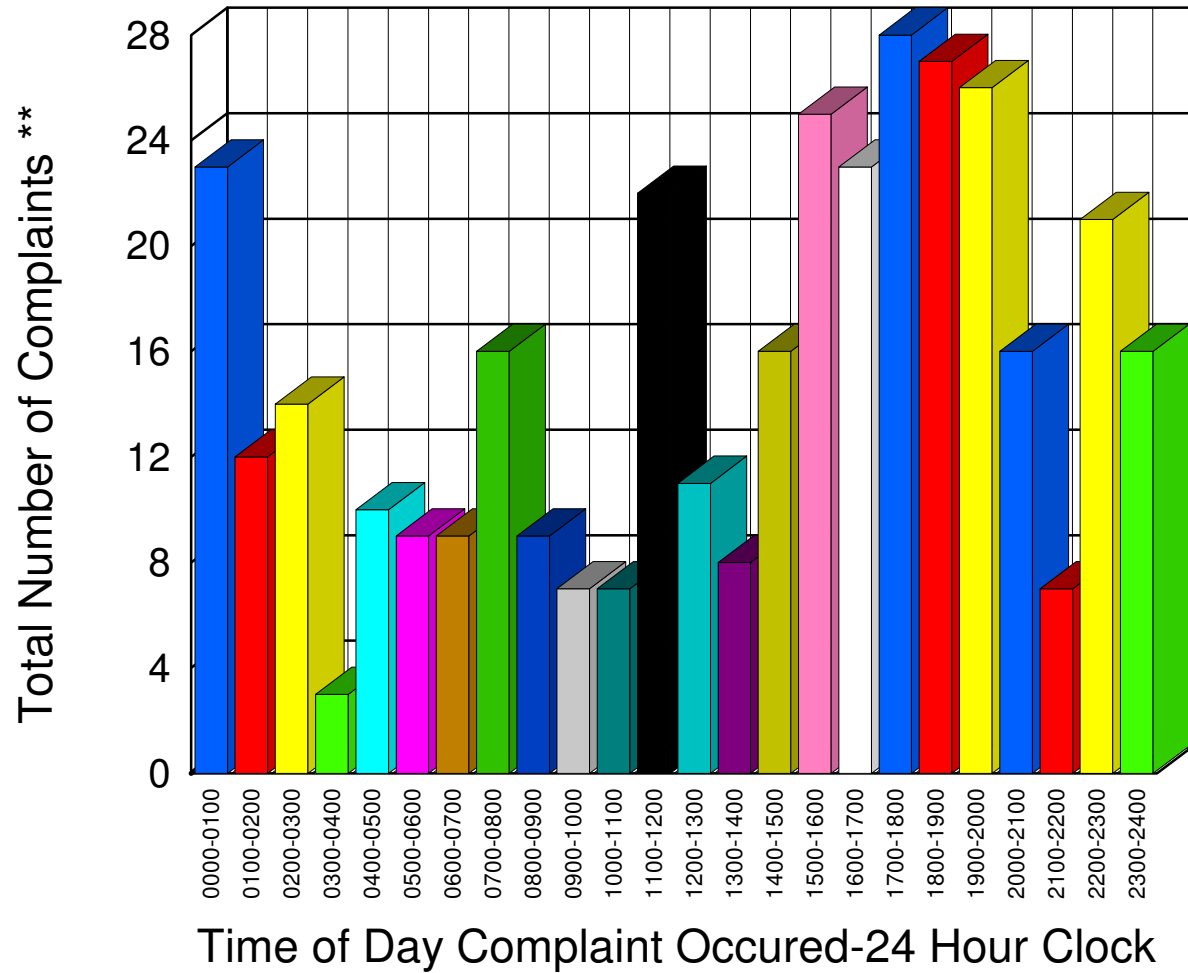
** Complaints taken by Muskegon Sheriff's Office

Muskegon County Sheriff's Office

Listing of Offense Reports--Casnovia and Casnovia Township 01/02/2006 to 12/30/2006

0000-0100	23
0100-0200	12
0200-0300	14
0300-0400	3
0400-0500	10
0500-0600	9
0600-0700	9
0700-0800	16
0800-0900	9
0900-1000	7
1000-1100	7
1100-1200	22
1200-1300	11
1300-1400	8
1400-1500	16
1500-1600	25
1600-1700	23
1700-1800	28
1800-1900	27
1900-2000	26
2000-2100	16
2100-2200	7
2200-2300	21
2300-2400	16

Total 365



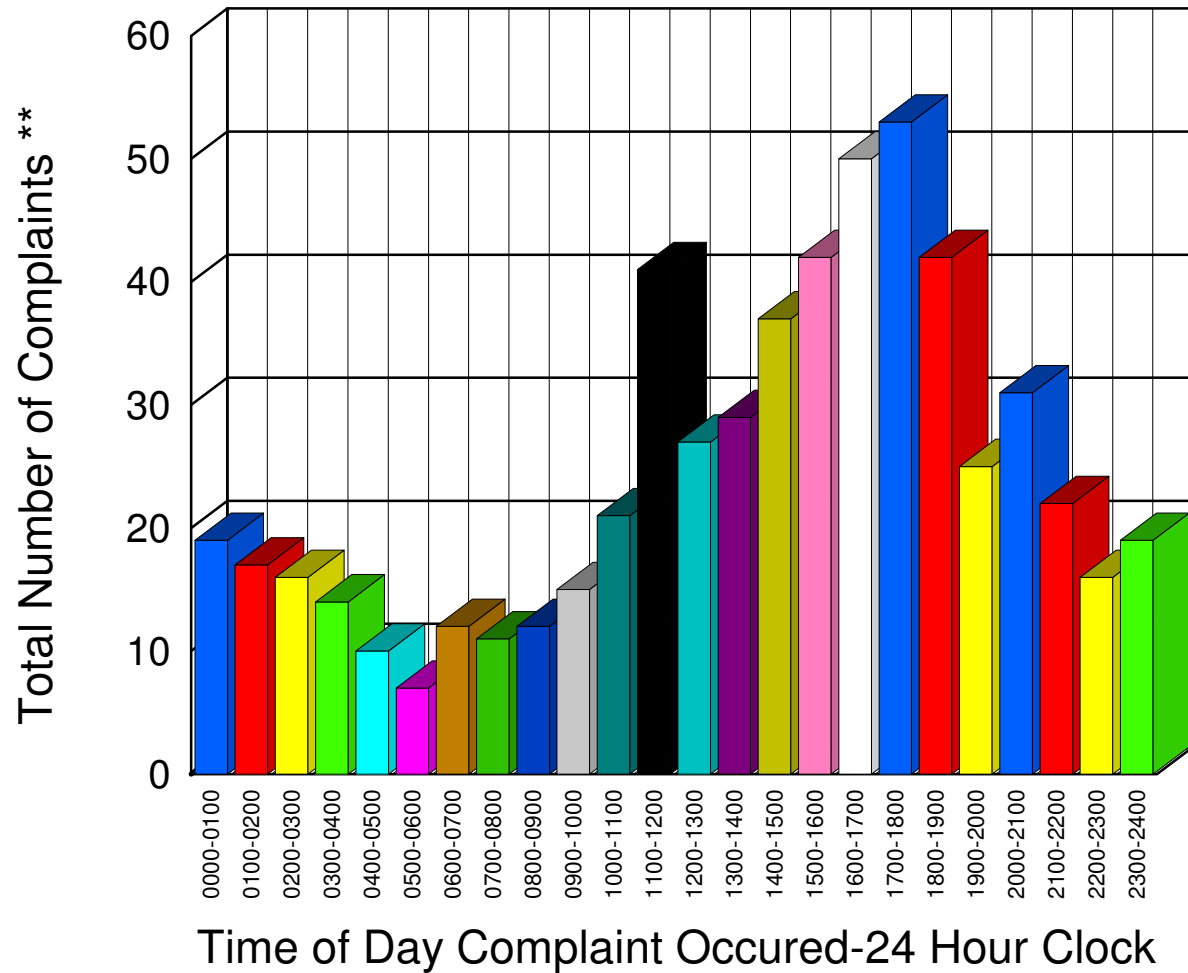
** Complaints taken by Muskegon Sheriff's Office

Muskegon County Sheriff's Office

Listing of Offense Reports--Cedar Creek Township 01/01/2006 to 12/31/2006

0000-0100	19
0100-0200	17
0200-0300	16
0300-0400	14
0400-0500	10
0500-0600	7
0600-0700	12
0700-0800	11
0800-0900	12
0900-1000	15
1000-1100	21
1100-1200	41
1200-1300	27
1300-1400	29
1400-1500	37
1500-1600	42
1600-1700	50
1700-1800	53
1800-1900	42
1900-2000	25
2000-2100	31
2100-2200	22
2200-2300	16
2300-2400	19

Total 588



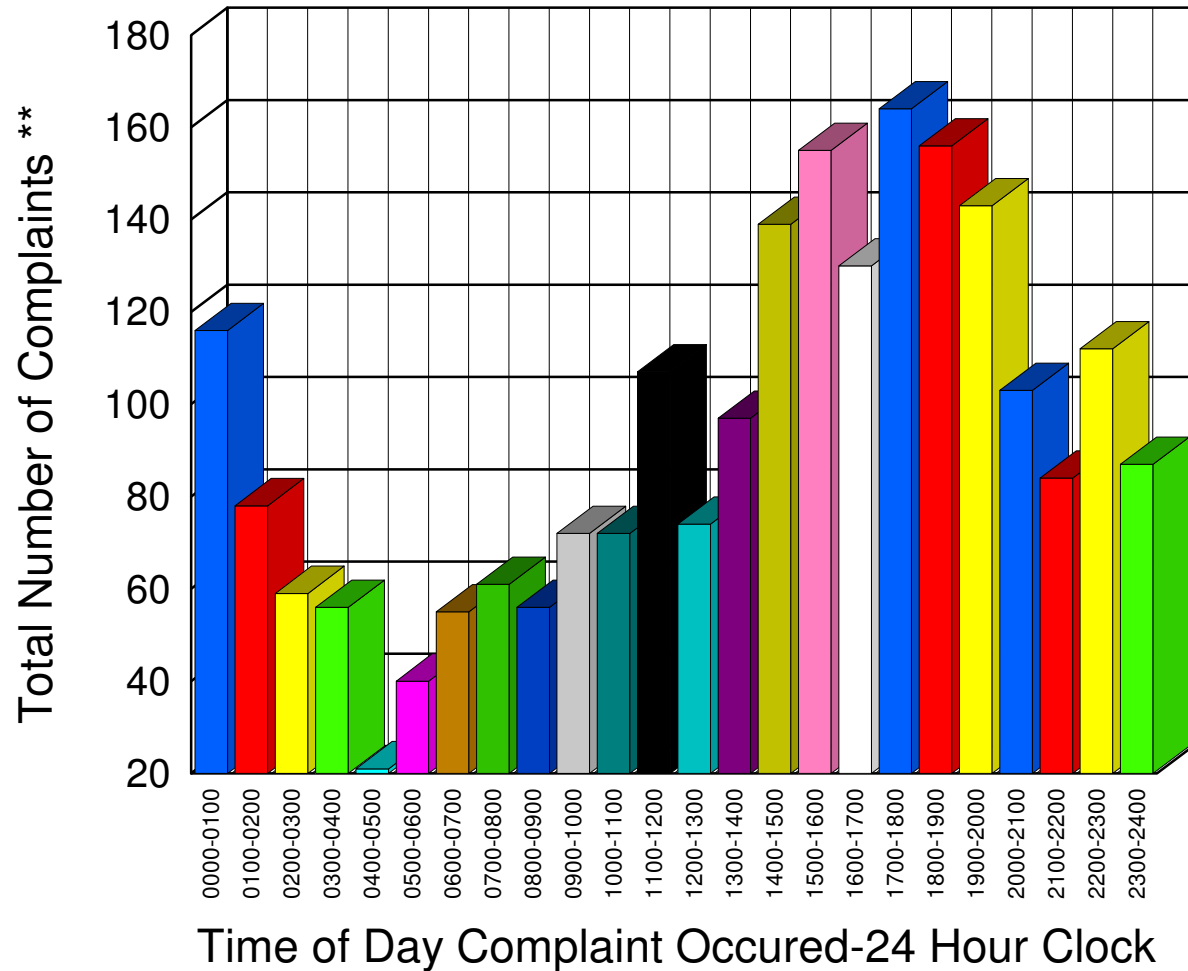
** Complaints taken by Muskegon Sheriff's Office

Muskegon County Sheriff's Office

Listing of Offense Reports--Lakewood Club and Dalton Township 01/01/2006 to 12/31/2006

0000-0100	116
0100-0200	78
0200-0300	59
0300-0400	56
0400-0500	21
0500-0600	40
0600-0700	55
0700-0800	61
0800-0900	56
0900-1000	72
1000-1100	72
1100-1200	107
1200-1300	74
1300-1400	97
1400-1500	139
1500-1600	155
1600-1700	130
1700-1800	164
1800-1900	156
1900-2000	143
2000-2100	103
2100-2200	84
2200-2300	112
2300-2400	87

Total 2,237



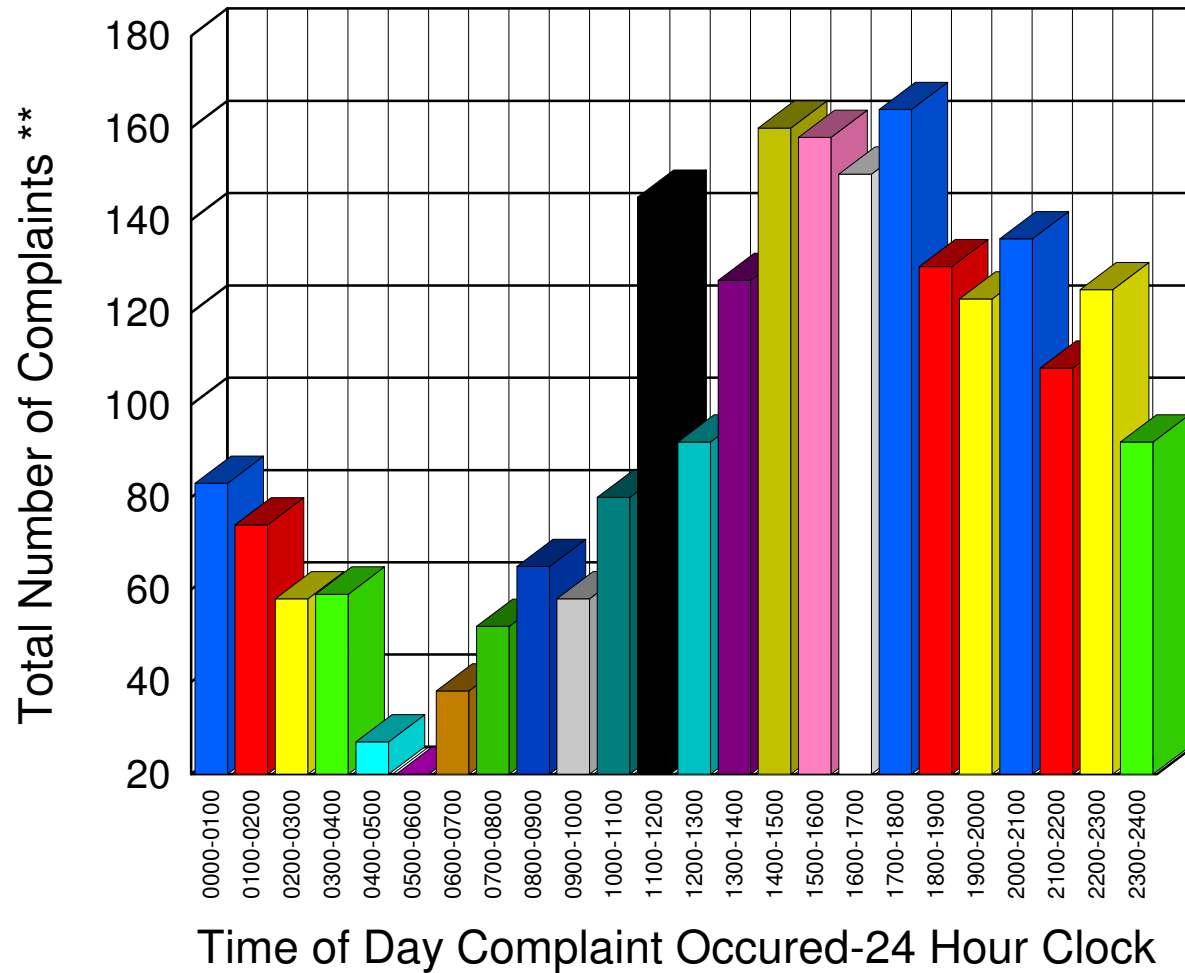
** Complaints taken by Muskegon Sheriff's Office

Muskegon County Sheriff's Office

Listing of Offense Reports--Egelston Township 01/01/2006 to 12/31/2006

0000-0100	83
0100-0200	74
0200-0300	58
0300-0400	59
0400-0500	27
0500-0600	20
0600-0700	38
0700-0800	52
0800-0900	65
0900-1000	58
1000-1100	80
1100-1200	145
1200-1300	92
1300-1400	127
1400-1500	160
1500-1600	158
1600-1700	150
1700-1800	164
1800-1900	130
1900-2000	123
2000-2100	136
2100-2200	108
2200-2300	125
2300-2400	92

Total 2,324

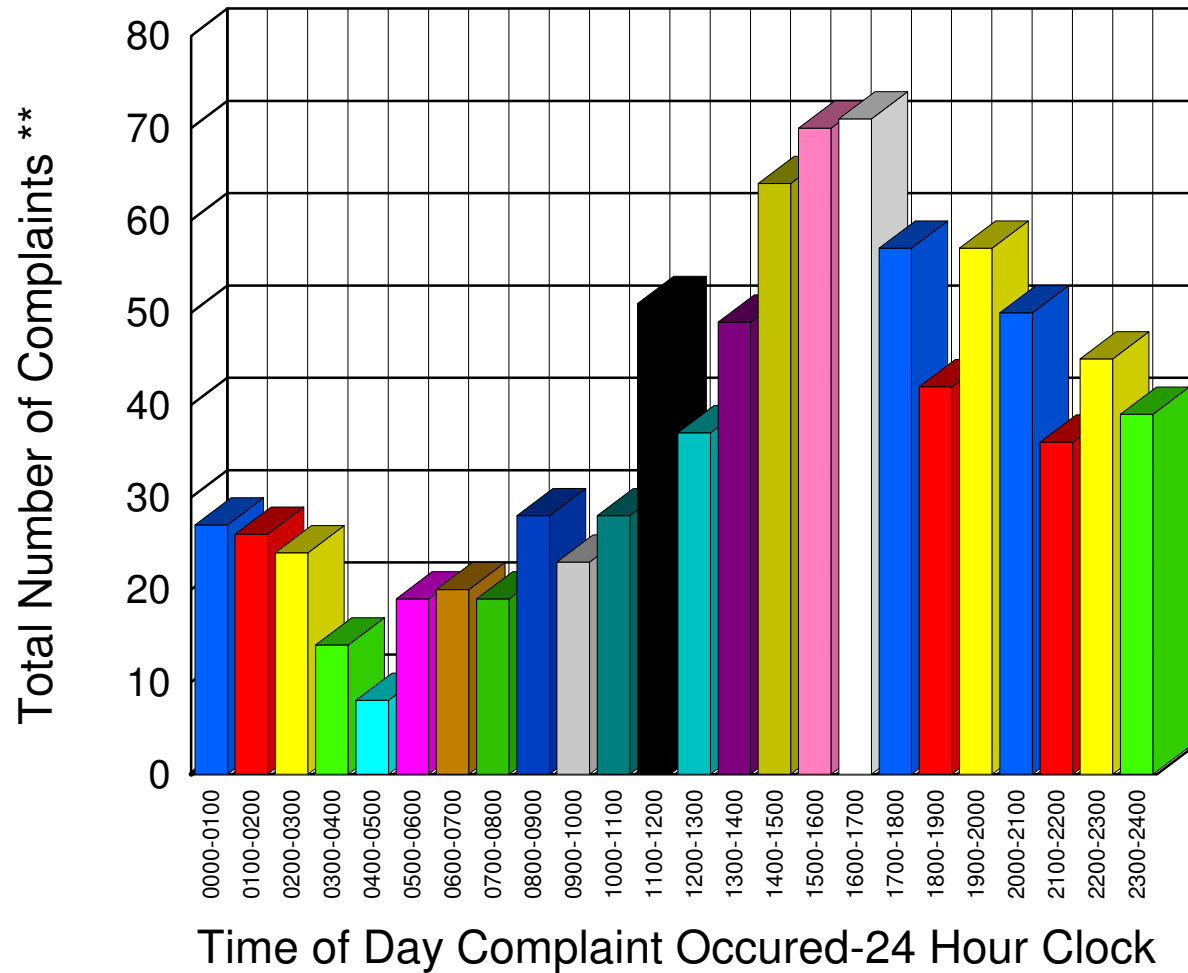


** Complaints taken by Muskegon Sheriff's Office

Muskegon County Sheriff's Office

Listing of Offense Reports--Fruitland Township 01/01/2006 to 12/31/2006

0000-0100	27
0100-0200	26
0200-0300	24
0300-0400	14
0400-0500	8
0500-0600	19
0600-0700	20
0700-0800	19
0800-0900	28
0900-1000	23
1000-1100	28
1100-1200	51
1200-1300	37
1300-1400	49
1400-1500	64
1500-1600	70
1600-1700	71
1700-1800	57
1800-1900	42
1900-2000	57
2000-2100	50
2100-2200	36
2200-2300	45
2300-2400	39
<hr/>	
<hr/>	
Total	904

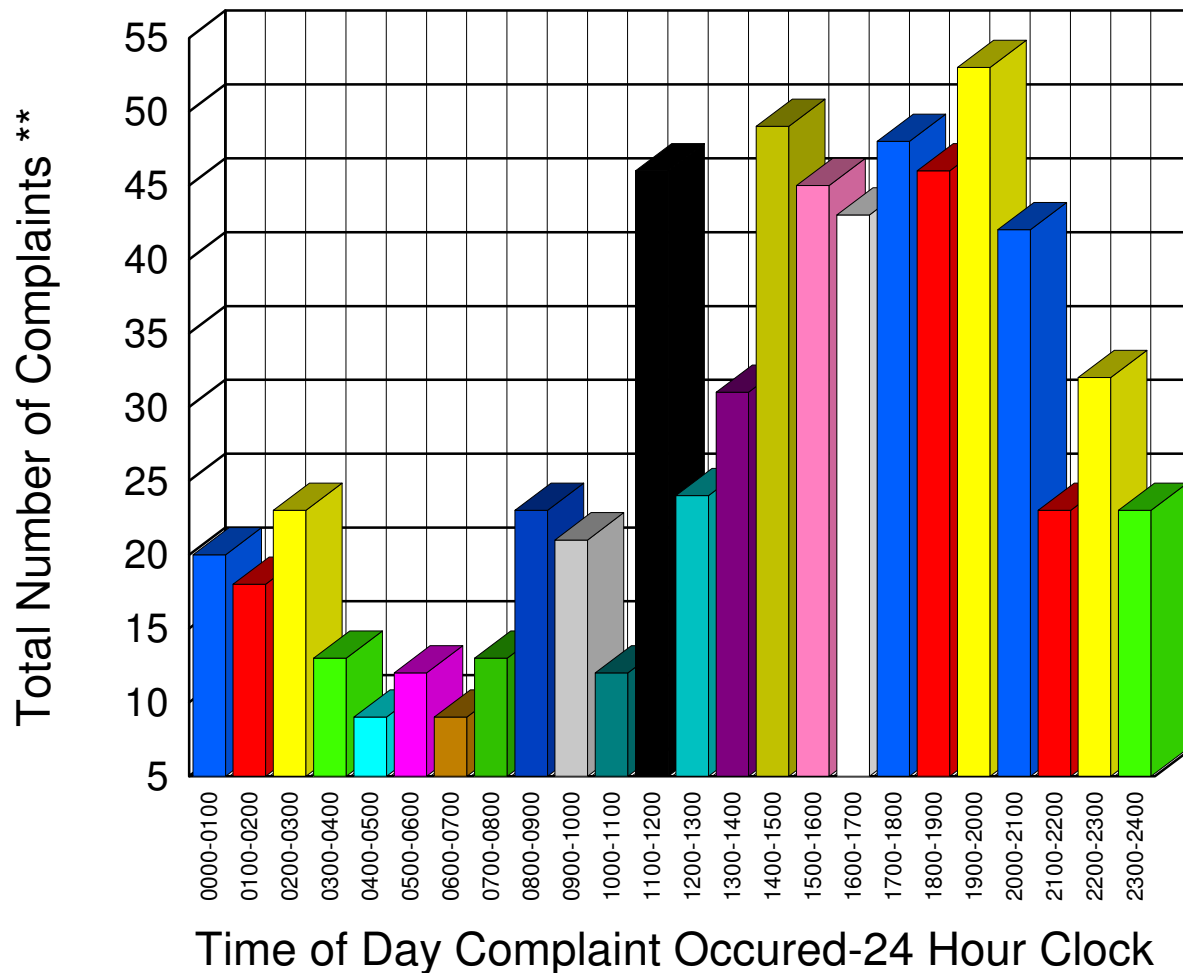


** Complaints taken by Muskegon Sheriff's Office

Muskegon County Sheriff's Office

Listing of Offense Reports--Holton Township 01/01/2006 to 12/31/2006

0000-0100	20
0100-0200	18
0200-0300	23
0300-0400	13
0400-0500	9
0500-0600	12
0600-0700	9
0700-0800	13
0800-0900	23
0900-1000	21
1000-1100	12
1100-1200	46
1200-1300	24
1300-1400	31
1400-1500	49
1500-1600	45
1600-1700	43
1700-1800	48
1800-1900	46
1900-2000	53
2000-2100	42
2100-2200	23
2200-2300	32
2300-2400	23
<hr/>	
<hr/>	
Total	678



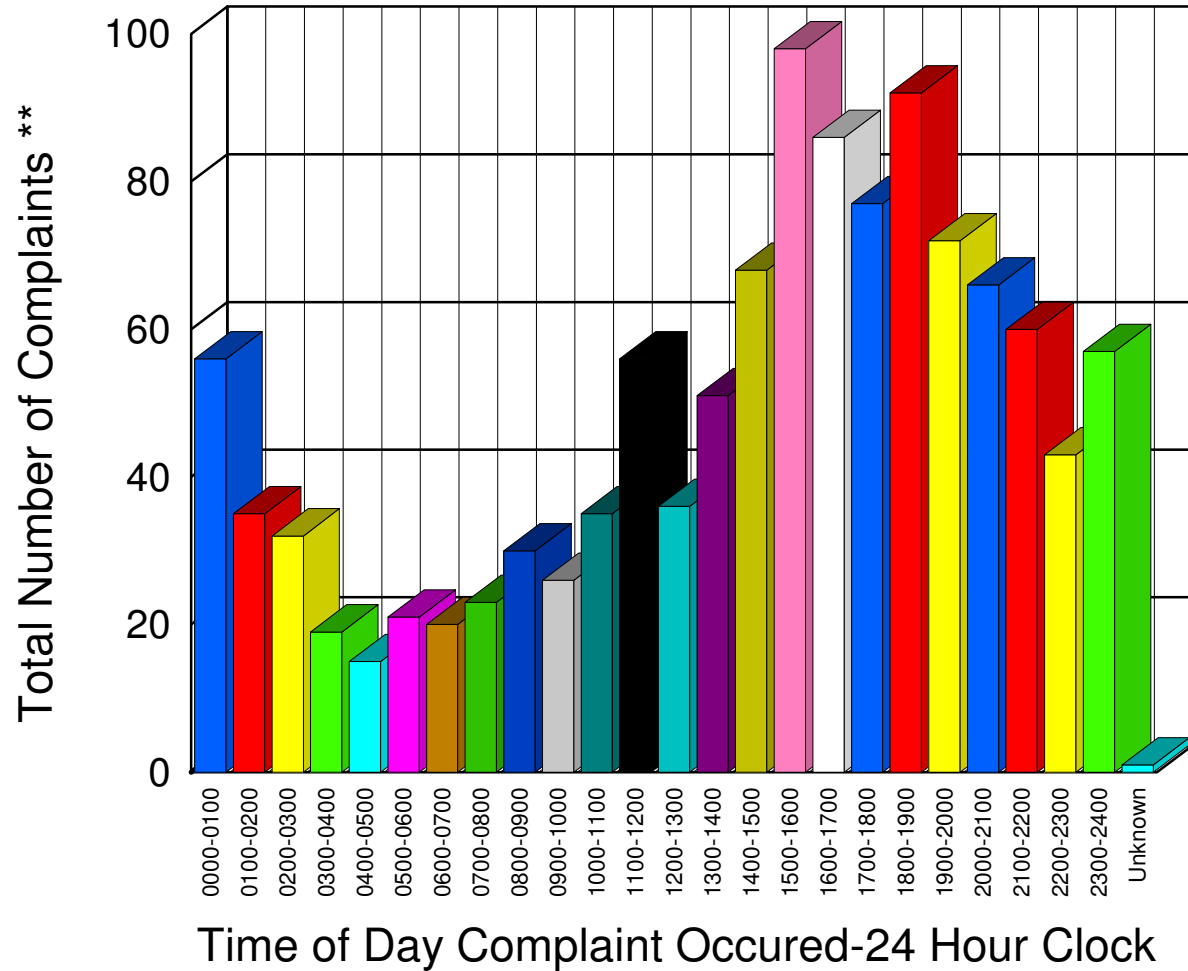
** Complaints taken by Muskegon Sheriff's Office

Muskegon County Sheriff's Office

Listing of Offense Reports--Laketon Township 01/01/2006 to 12/31/2006

0000-0100	56
0100-0200	35
0200-0300	32
0300-0400	19
0400-0500	15
0500-0600	21
0600-0700	20
0700-0800	23
0800-0900	30
0900-1000	26
1000-1100	35
1100-1200	56
1200-1300	36
1300-1400	51
1400-1500	68
1500-1600	98
1600-1700	86
1700-1800	77
1800-1900	92
1900-2000	72
2000-2100	66
2100-2200	60
2200-2300	43
2300-2400	57
Unknown	1

Total 1,175

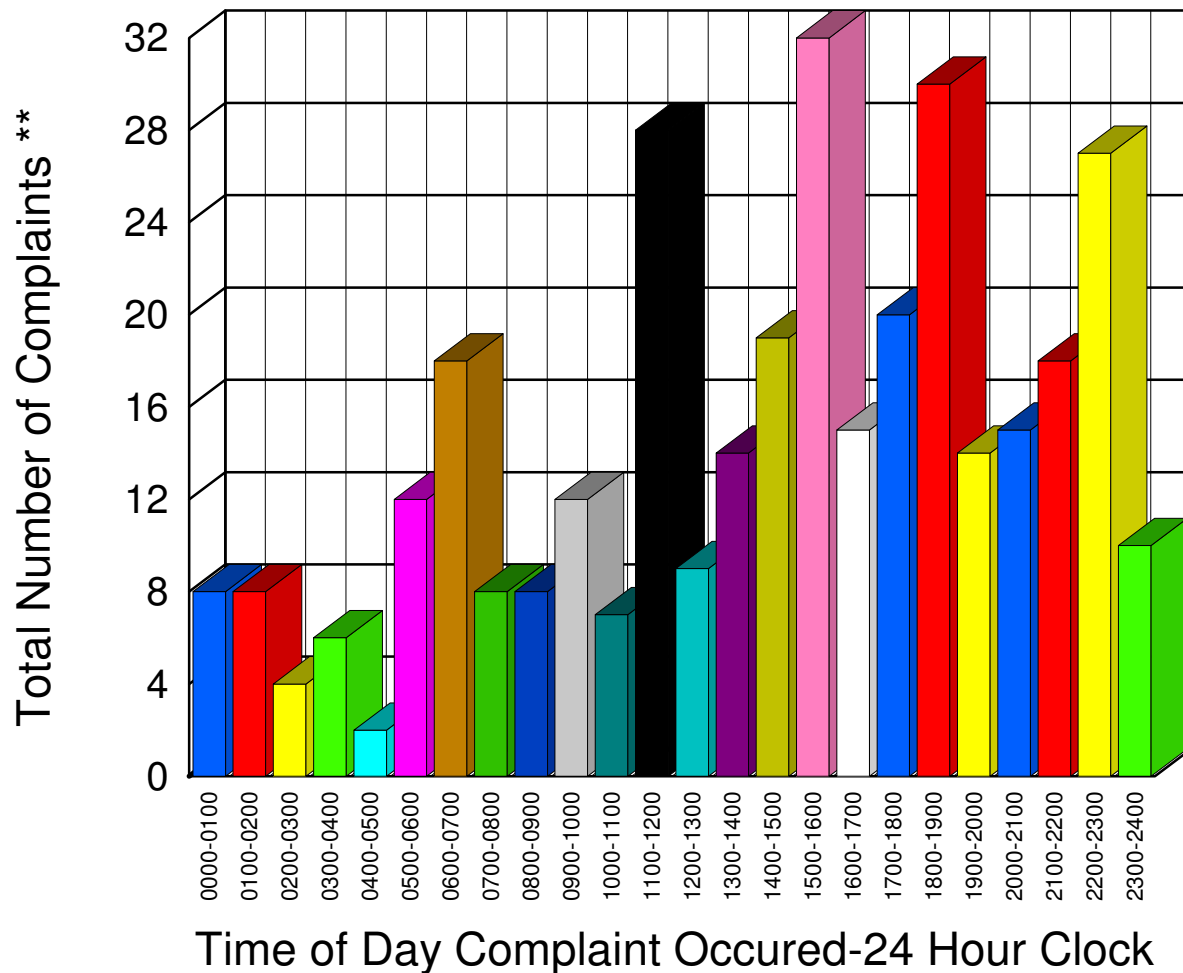


** Complaints taken by Muskegon Sheriff's Office

Muskegon County Sheriff's Office

Listing of Offense Reports--Montague Township 01/02/2006 to 12/31/2006

0000-0100	8
0100-0200	8
0200-0300	4
0300-0400	6
0400-0500	2
0500-0600	12
0600-0700	18
0700-0800	8
0800-0900	8
0900-1000	12
1000-1100	7
1100-1200	28
1200-1300	9
1300-1400	14
1400-1500	19
1500-1600	32
1600-1700	15
1700-1800	20
1800-1900	30
1900-2000	14
2000-2100	15
2100-2200	18
2200-2300	27
2300-2400	10
<hr/>	
<hr/>	
Total	344

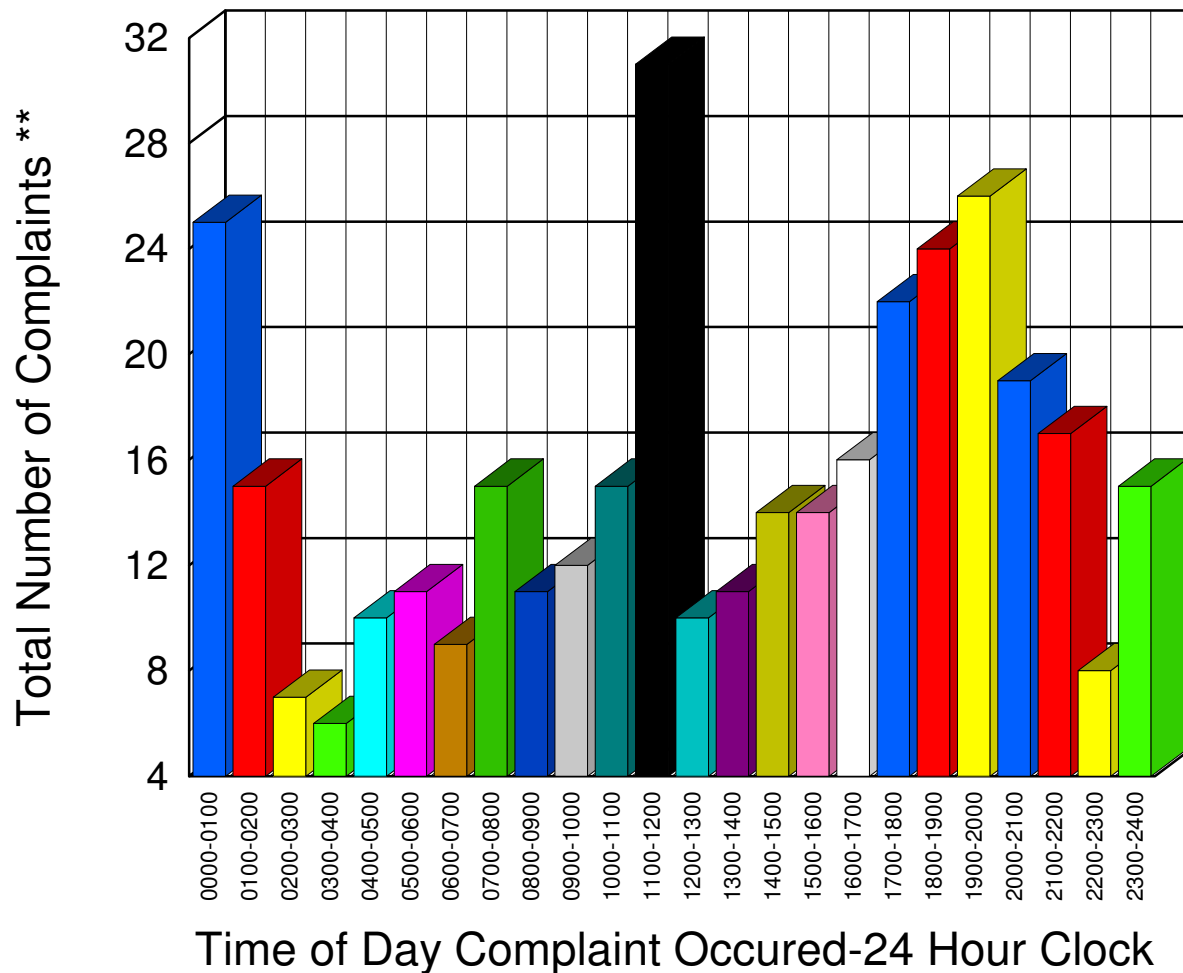


** Complaints taken by Muskegon Sheriff's Office

Muskegon County Sheriff's Office

Listing of Offense Reports--Moorland Township 01/01/2006 to 12/29/2006

0000-0100	25
0100-0200	15
0200-0300	7
0300-0400	6
0400-0500	10
0500-0600	11
0600-0700	9
0700-0800	15
0800-0900	11
0900-1000	12
1000-1100	15
1100-1200	31
1200-1300	10
1300-1400	11
1400-1500	14
1500-1600	14
1600-1700	16
1700-1800	22
1800-1900	24
1900-2000	26
2000-2100	19
2100-2200	17
2200-2300	8
2300-2400	15
<hr/>	
<hr/>	
Total	363



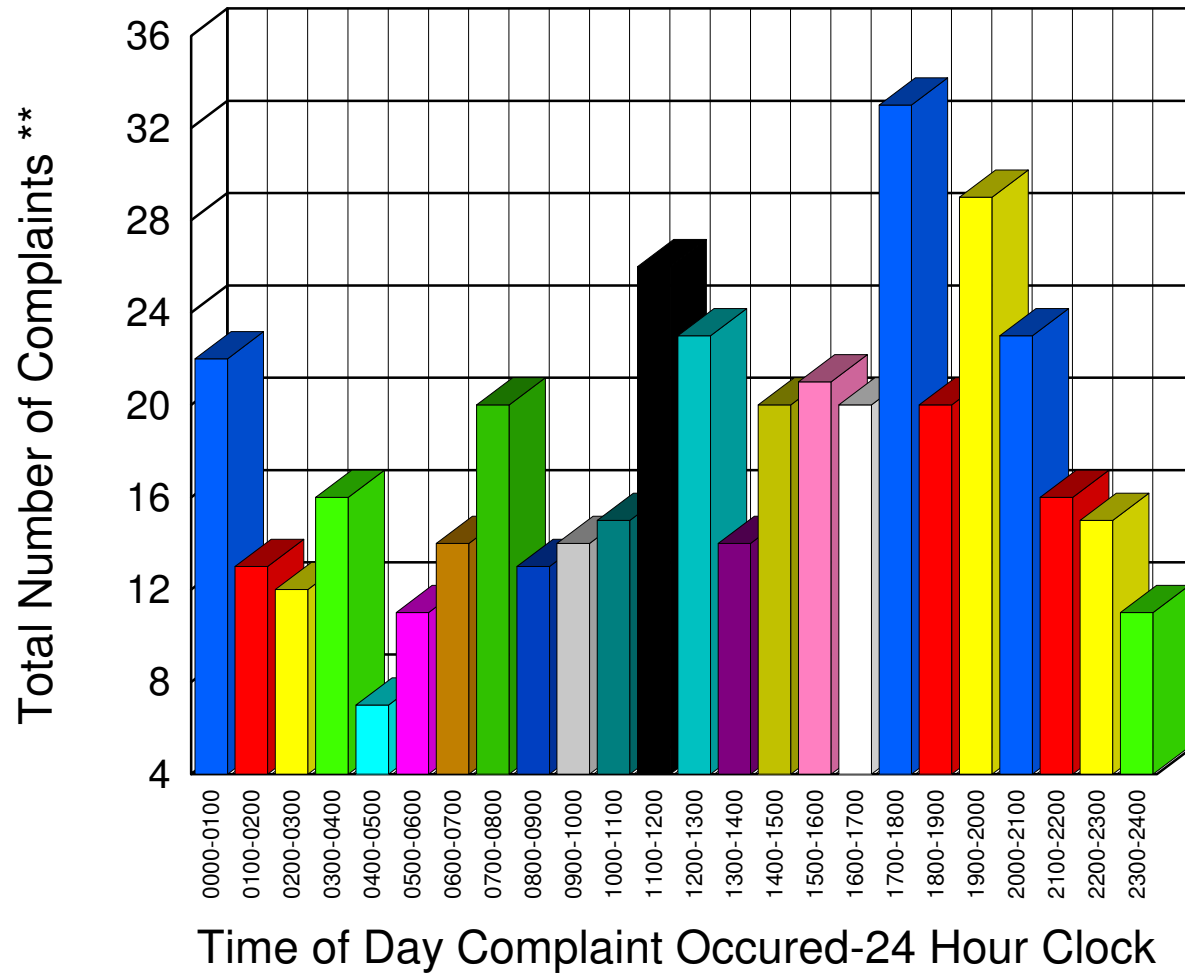
** Complaints taken by Muskegon Sheriff's Office

Muskegon County Sheriff's Office

Listing of Offense Reports--Ravenna and Ravenna Township 01/01/2006 to 12/31/2006

0000-0100	22
0100-0200	13
0200-0300	12
0300-0400	16
0400-0500	7
0500-0600	11
0600-0700	14
0700-0800	20
0800-0900	13
0900-1000	14
1000-1100	15
1100-1200	26
1200-1300	23
1300-1400	14
1400-1500	20
1500-1600	21
1600-1700	20
1700-1800	33
1800-1900	20
1900-2000	29
2000-2100	23
2100-2200	16
2200-2300	15
2300-2400	11

Total 428

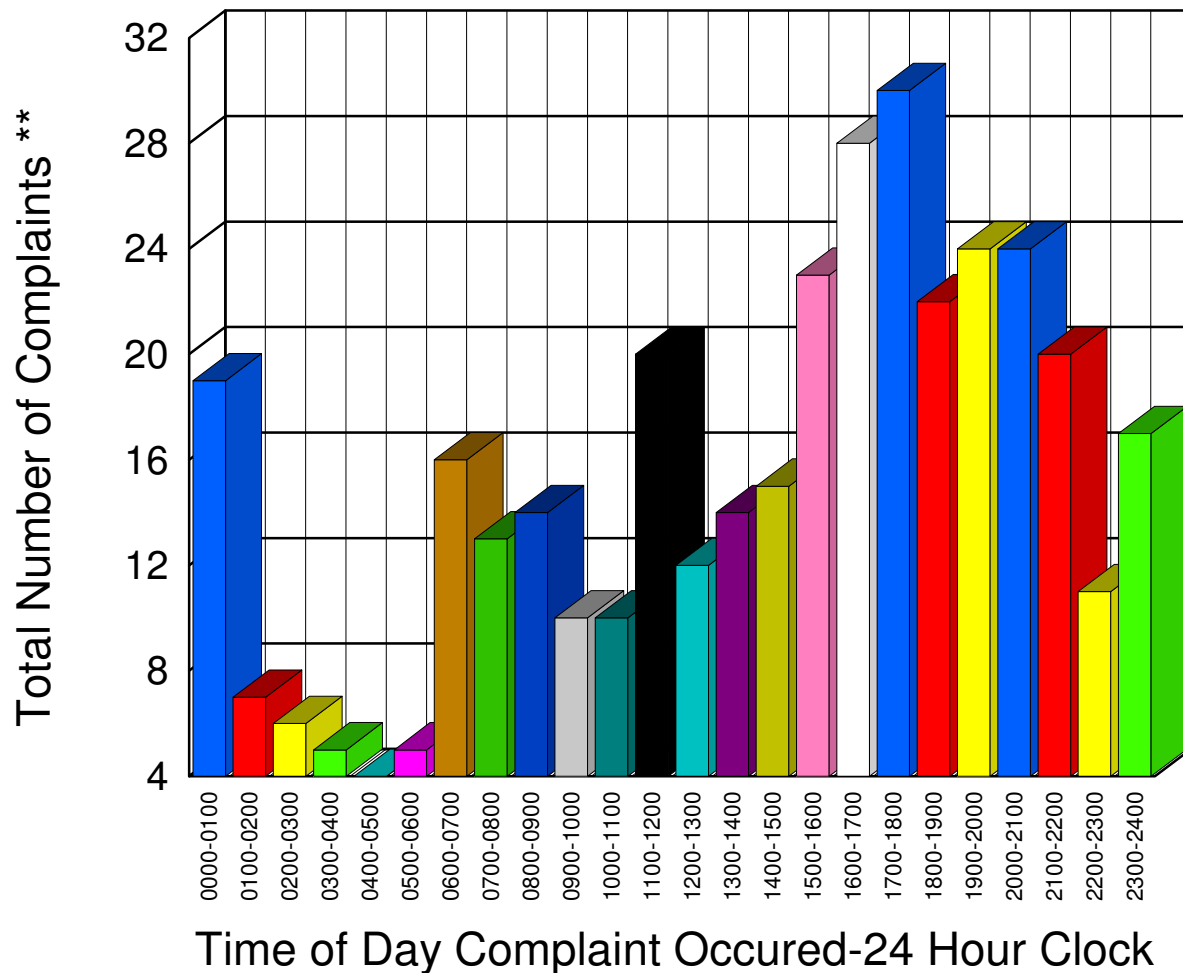


** Complaints taken by Muskegon Sheriff's Office

Muskegon County Sheriff's Office

Listing of Offense Reports--Sullivan Township 01/01/2006 to 12/30/2006

0000-0100	19
0100-0200	7
0200-0300	6
0300-0400	5
0400-0500	4
0500-0600	5
0600-0700	16
0700-0800	13
0800-0900	14
0900-1000	10
1000-1100	10
1100-1200	20
1200-1300	12
1300-1400	14
1400-1500	15
1500-1600	23
1600-1700	28
1700-1800	30
1800-1900	22
1900-2000	24
2000-2100	24
2100-2200	20
2200-2300	11
2300-2400	17
<hr/>	
<hr/>	
Total	369



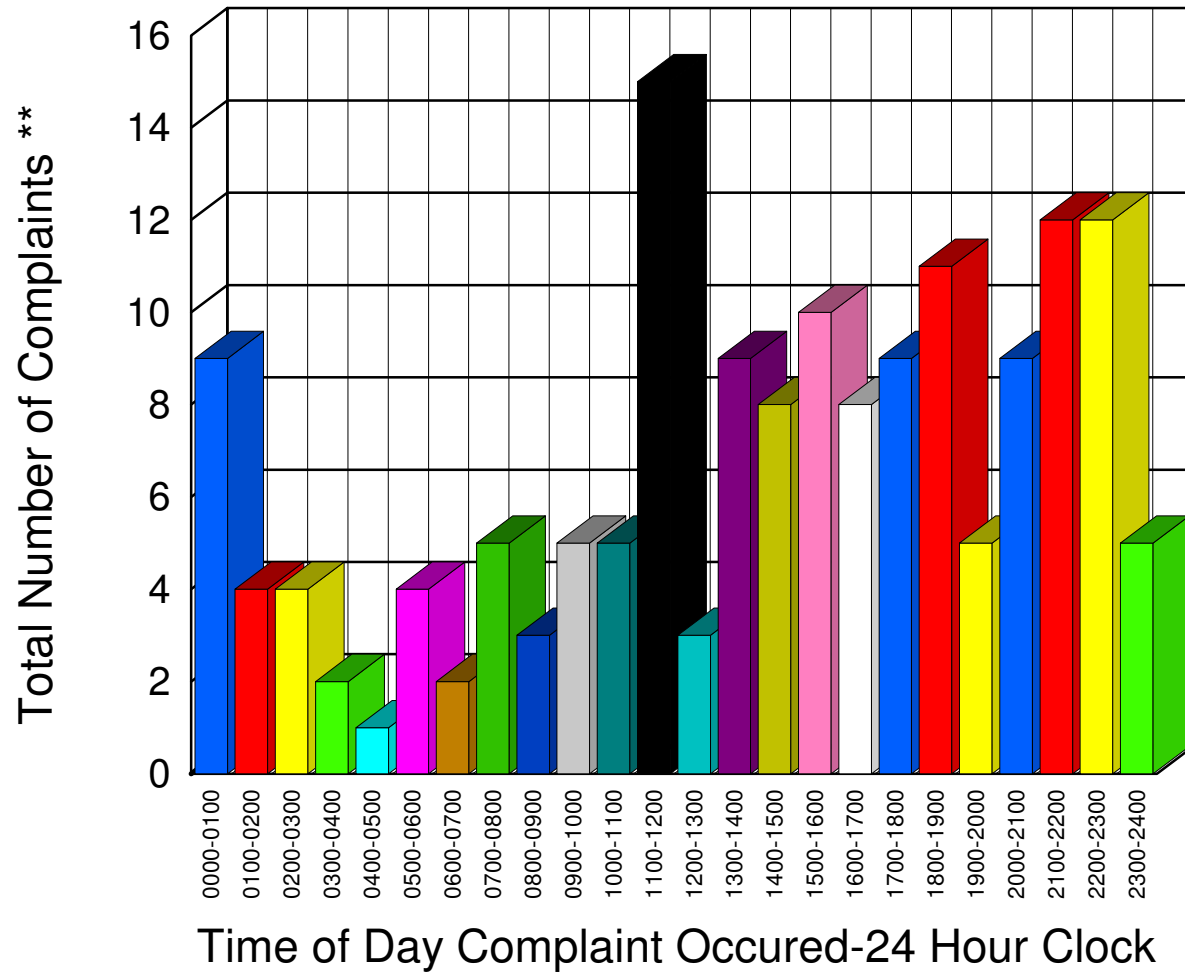
** Complaints taken by Muskegon Sheriff's Office

Muskegon County Sheriff's Office

Listing of Offense Reports--White River Township 01/04/2006 to 12/30/2006

0000-0100	9
0100-0200	4
0200-0300	4
0300-0400	2
0400-0500	1
0500-0600	4
0600-0700	2
0700-0800	5
0800-0900	3
0900-1000	5
1000-1100	5
1100-1200	15
1200-1300	3
1300-1400	9
1400-1500	8
1500-1600	10
1600-1700	8
1700-1800	9
1800-1900	11
1900-2000	5
2000-2100	9
2100-2200	12
2200-2300	12
2300-2400	5

Total 160



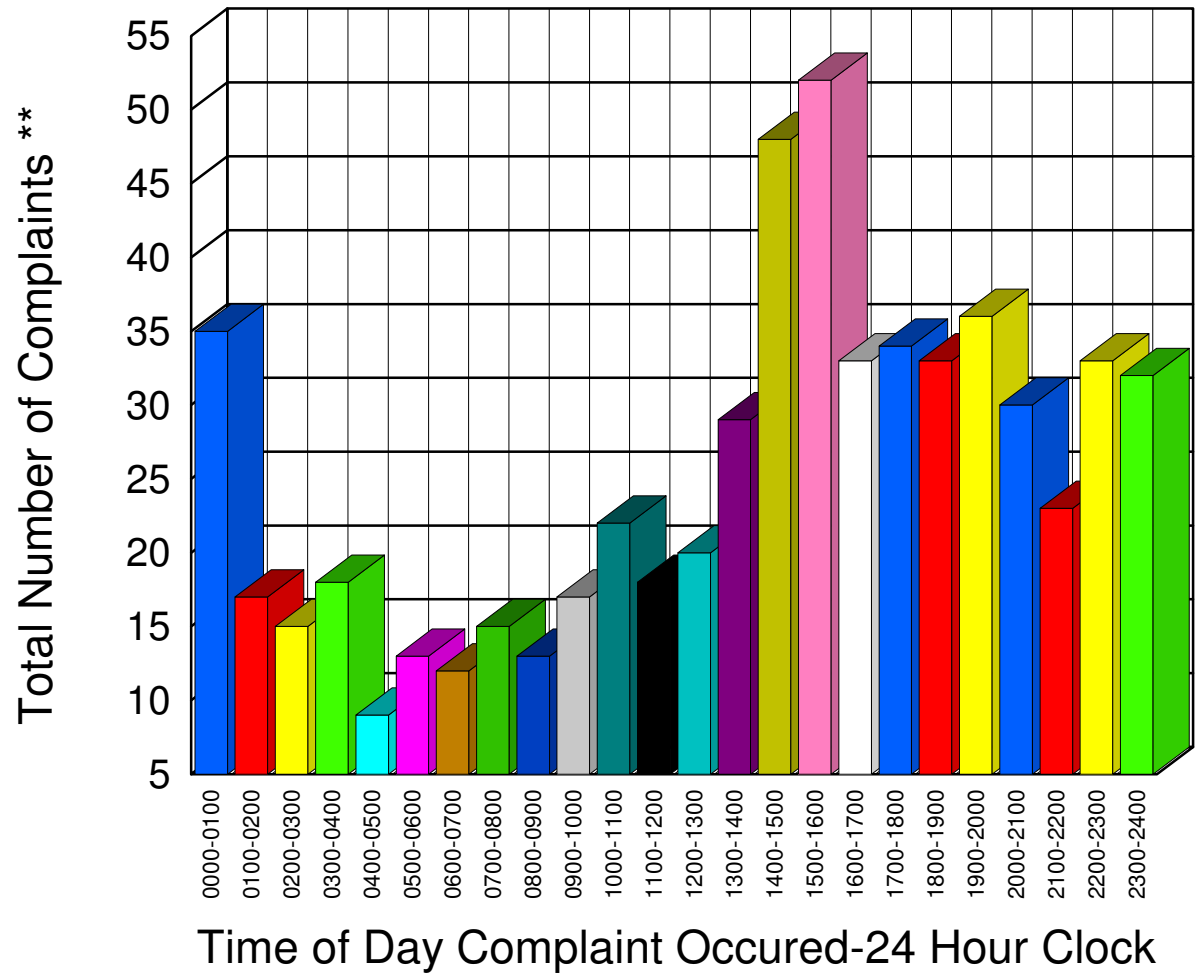
** Complaints taken by Muskegon Sheriff's Office

Muskegon County Sheriff's Office

Listing of Offense Reports--Whitehall Township 01/01/2006 to 12/30/2006

0000-0100	35
0100-0200	17
0200-0300	15
0300-0400	18
0400-0500	9
0500-0600	13
0600-0700	12
0700-0800	15
0800-0900	13
0900-1000	17
1000-1100	22
1100-1200	18
1200-1300	20
1300-1400	29
1400-1500	48
1500-1600	52
1600-1700	33
1700-1800	34
1800-1900	33
1900-2000	36
2000-2100	30
2100-2200	23
2200-2300	33
2300-2400	32

Total 607



** Complaints taken by Muskegon Sheriff's Office