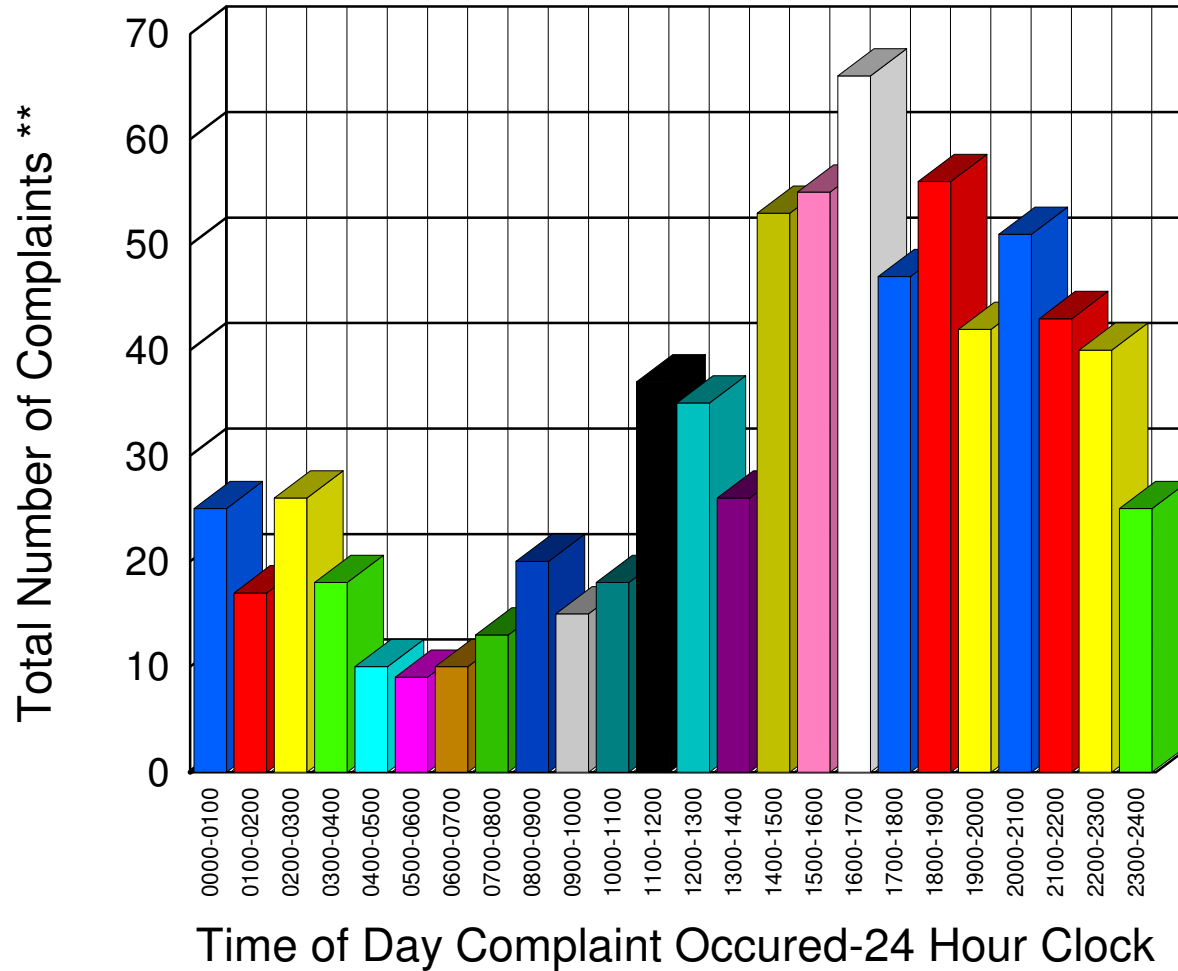


Muskegon County Sheriff's Office

Listing of Offense Reports-- 04/01/2008 00:00:00 to 04/30/2008 23:27:59

0000-0100	25
0100-0200	17
0200-0300	26
0300-0400	18
0400-0500	10
0500-0600	9
0600-0700	10
0700-0800	13
0800-0900	20
0900-1000	15
1000-1100	18
1100-1200	37
1200-1300	35
1300-1400	26
1400-1500	53
1500-1600	55
1600-1700	66
1700-1800	47
1800-1900	56
1900-2000	42
2000-2100	51
2100-2200	43
2200-2300	40
2300-2400	25



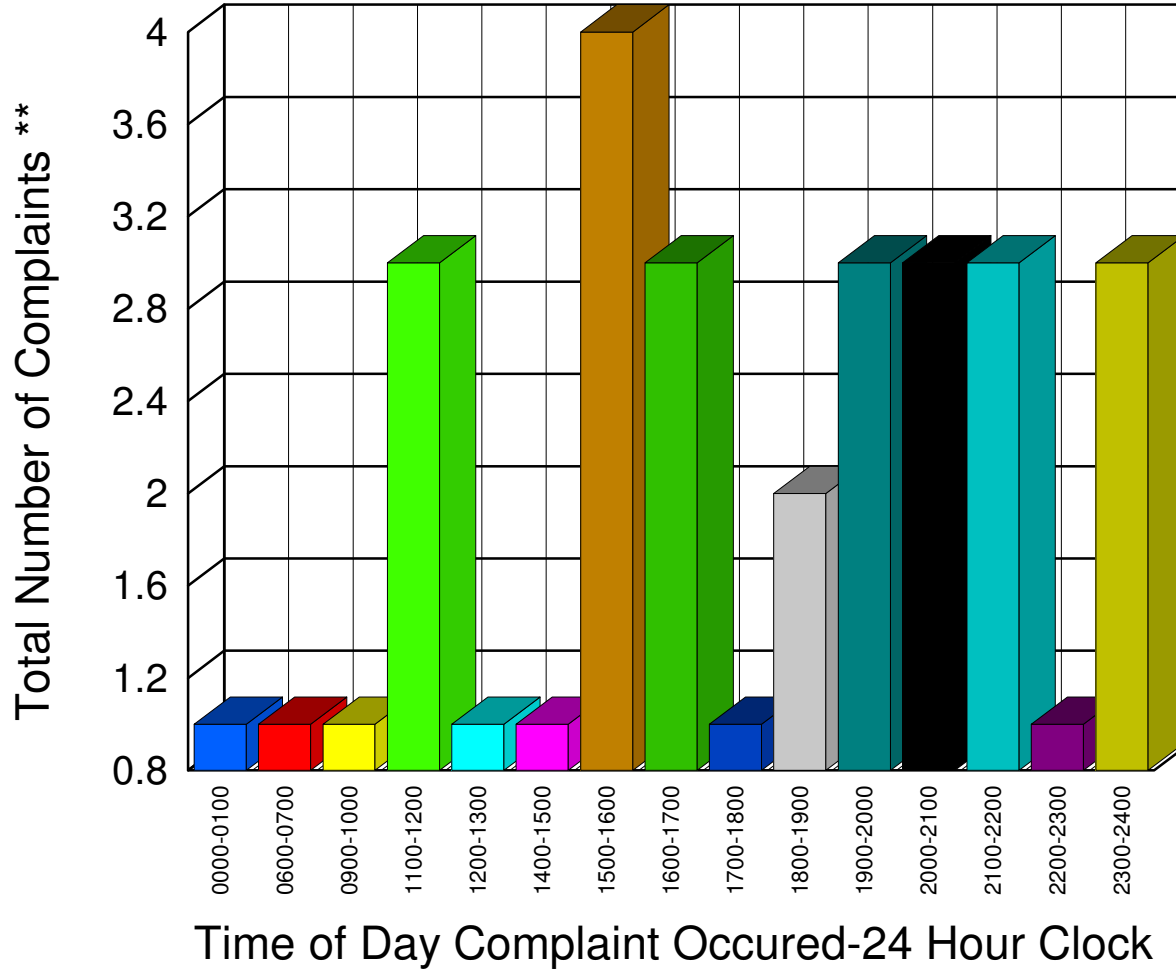
Total 757

** Complaints taken by Muskegon Sheriff's Office

Muskegon County Sheriff's Office

Listing of Offense Reports - Blue Lake Township - 04/03/2008 19:47:59 to 04/30/2008 21:49:59

0000-0100	1
0600-0700	1
0900-1000	1
1100-1200	3
1200-1300	1
1400-1500	1
1500-1600	4
1600-1700	3
1700-1800	1
1800-1900	2
1900-2000	3
2000-2100	3
2100-2200	3
2200-2300	1
2300-2400	3



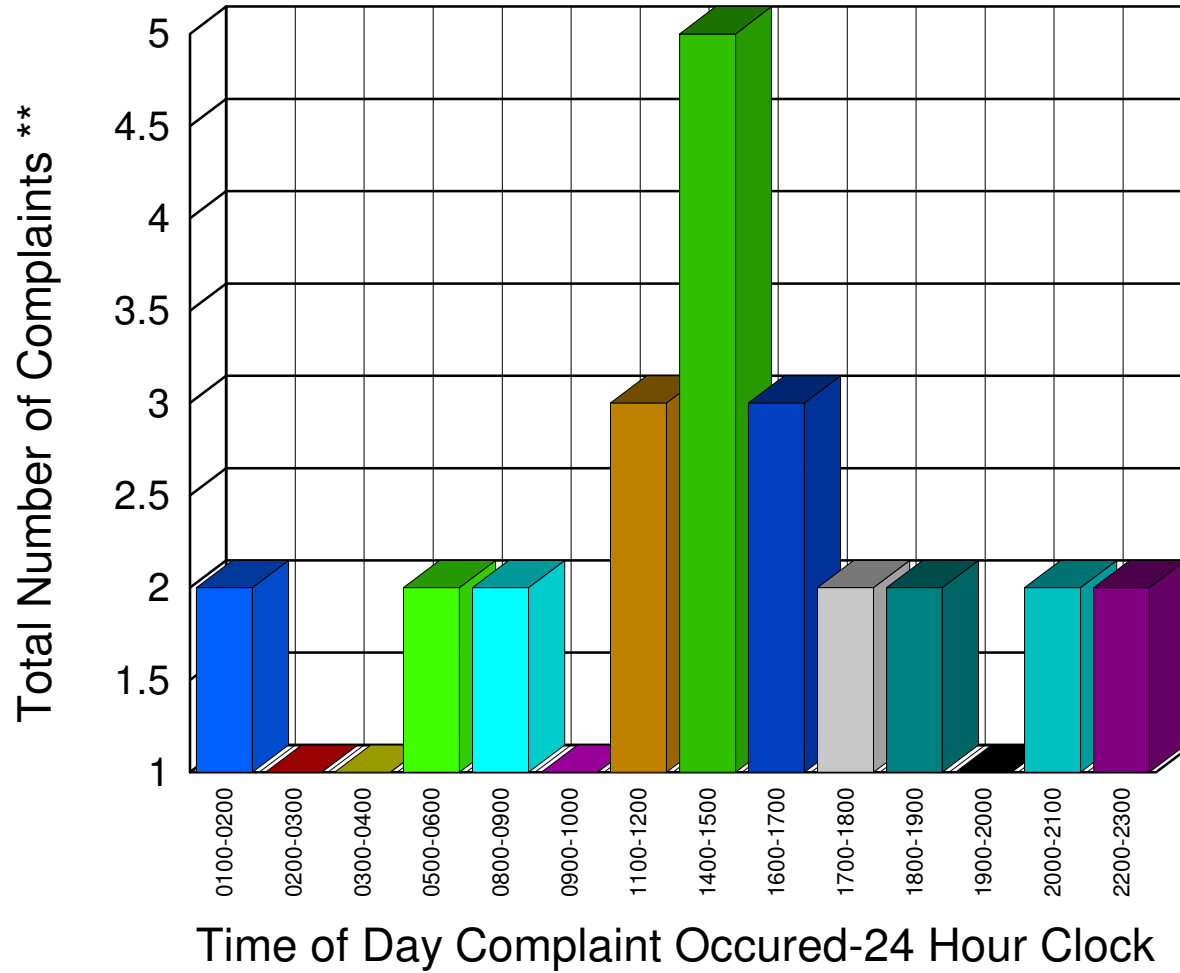
Total **31**

** Complaints taken by Muskegon Sheriff's Office

Muskegon County Sheriff's Office

Listing of Offense Reports - Casnovia Village and Township - 04/01/2008 05:30:00 to 04/30/2008 16:54:59

0100-0200	2
0200-0300	1
0300-0400	1
0500-0600	2
0800-0900	2
0900-1000	1
1100-1200	3
1400-1500	5
1600-1700	3
1700-1800	2
1800-1900	2
1900-2000	1
2000-2100	2
2200-2300	2



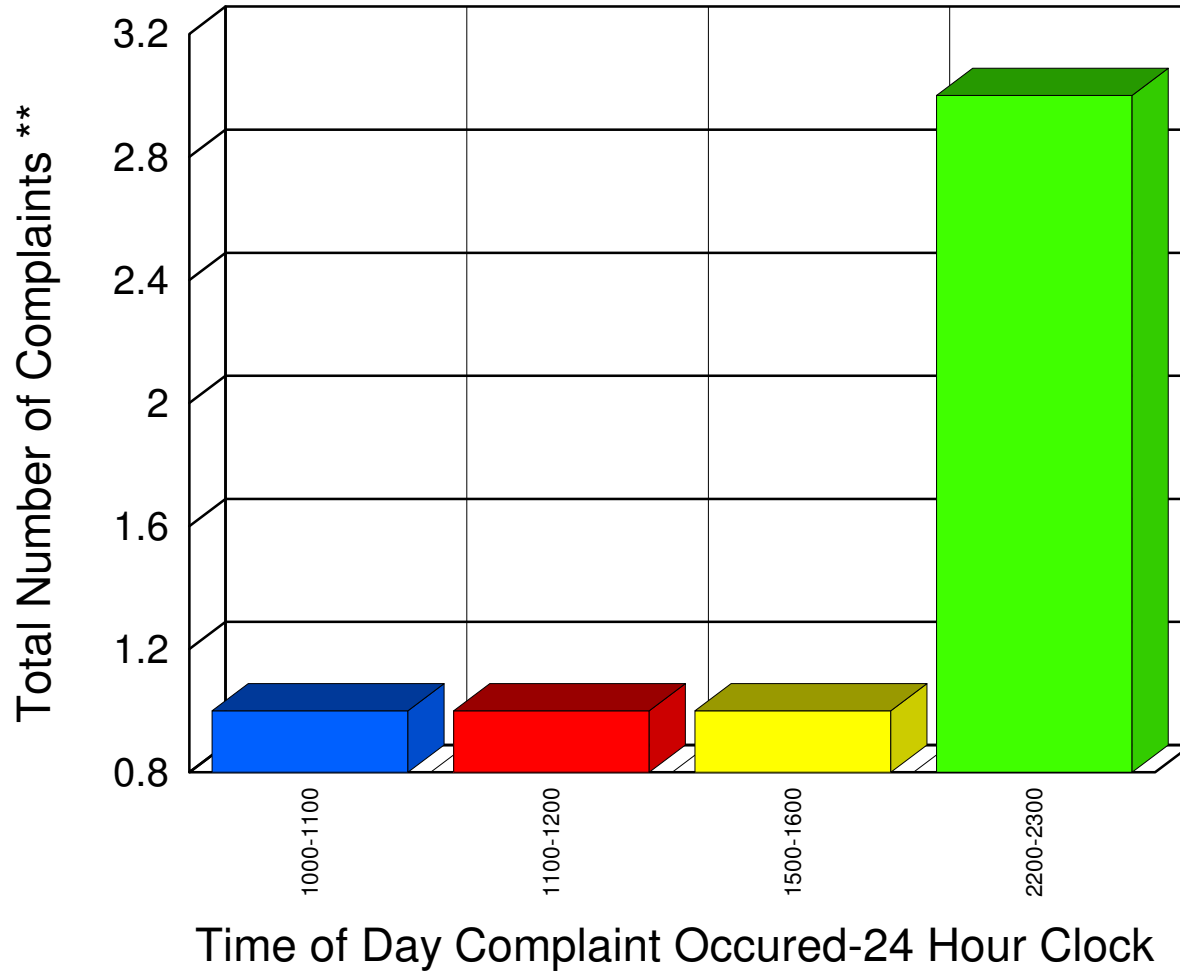
Total	29
-------	----

** Complaints taken by Muskegon Sheriff's Office

Muskegon County Sheriff's Office

Listing of Offense Reports - Cedar Creek Township - 04/01/2008 11:12:00 to 04/29/2008 10:45:00

<u>1000-1100</u>	<u>1</u>
<u>1100-1200</u>	<u>1</u>
<u>1500-1600</u>	<u>1</u>
<u>2200-2300</u>	<u>3</u>



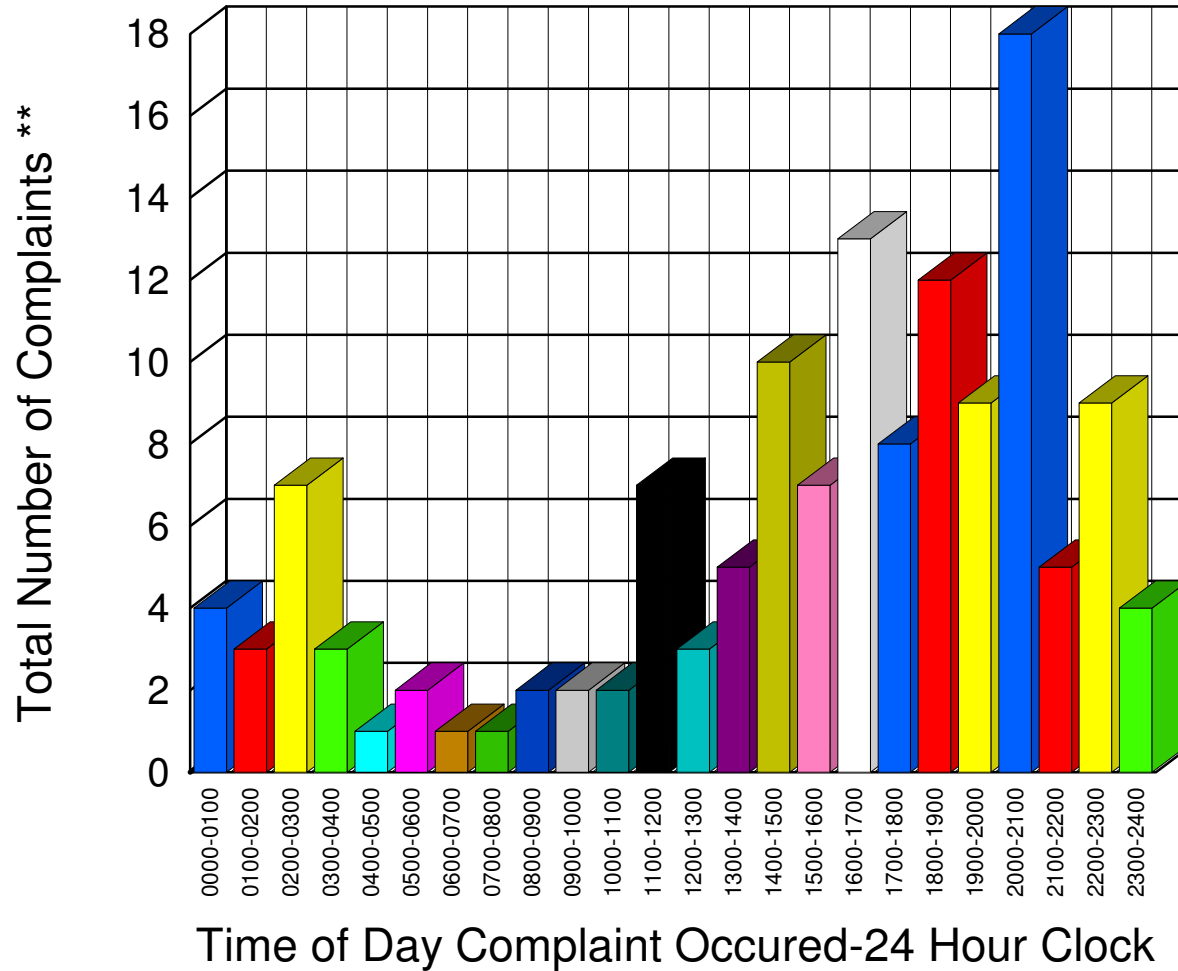
Total	6
-------	---

** Complaints taken by Muskegon Sheriff's Office

Muskegon County Sheriff's Office

Listing of Offense Reports - Lakewood Club and Dalton Township - 04/01/2008 06:01:00 to 04/30/2008 20:45:59

0000-0100	4
0100-0200	3
0200-0300	7
0300-0400	3
0400-0500	1
0500-0600	2
0600-0700	1
0700-0800	1
0800-0900	2
0900-1000	2
1000-1100	2
1100-1200	7
1200-1300	3
1300-1400	5
1400-1500	10
1500-1600	7
1600-1700	13
1700-1800	8
1800-1900	12
1900-2000	9
2000-2100	18
2100-2200	5
2200-2300	9
2300-2400	4



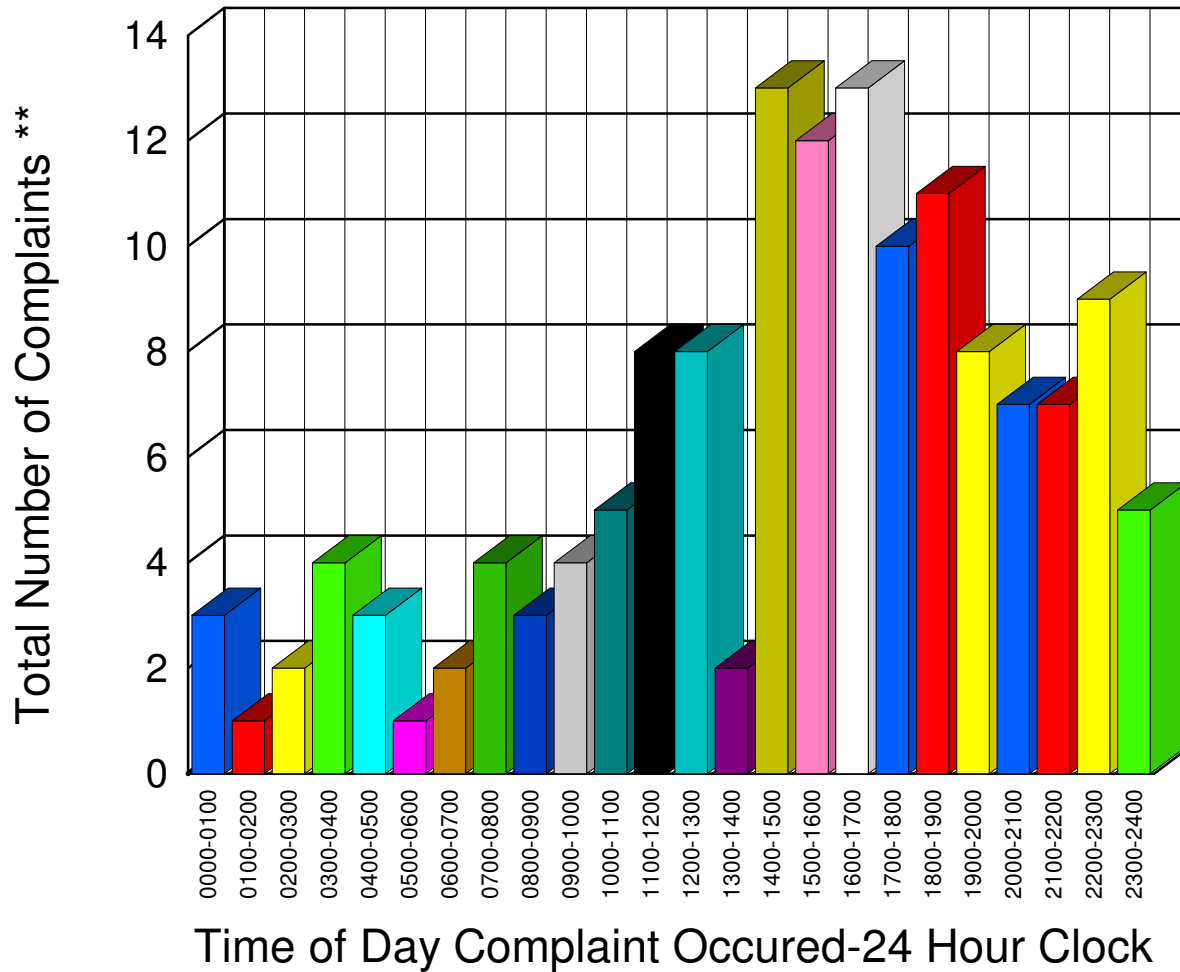
Total 138

** Complaints taken by Muskegon Sheriff's Office

Muskegon County Sheriff's Office

Listing of Offense Reports - Egelston Township - 04/01/2008 00:12:59 to 04/30/2008 23:27:59

0000-0100	3
0100-0200	1
0200-0300	2
0300-0400	4
0400-0500	3
0500-0600	1
0600-0700	2
0700-0800	4
0800-0900	3
0900-1000	4
1000-1100	5
1100-1200	8
1200-1300	8
1300-1400	2
1400-1500	13
1500-1600	12
1600-1700	13
1700-1800	10
1800-1900	11
1900-2000	8
2000-2100	7
2100-2200	7
2200-2300	9
2300-2400	5



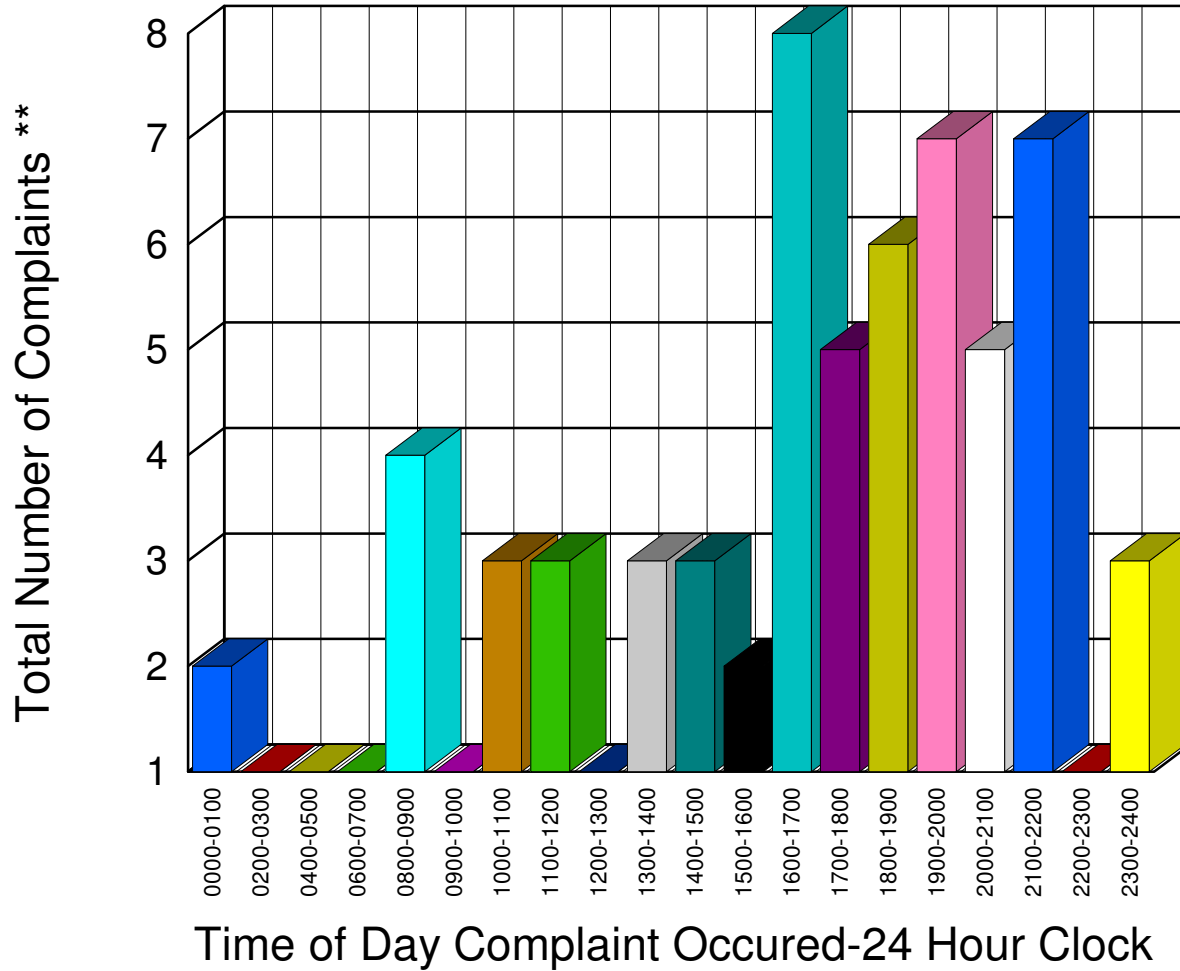
Total 145

** Complaints taken by Muskegon Sheriff's Office

Muskegon County Sheriff's Office

Listing of Offense Reports - Fruitland Township - 04/01/2008 16:45:00 to 04/30/2008 12:59:00

0000-0100	2
0200-0300	1
0400-0500	1
0600-0700	1
0800-0900	4
0900-1000	1
1000-1100	3
1100-1200	3
1200-1300	1
1300-1400	3
1400-1500	3
1500-1600	2
1600-1700	8
1700-1800	5
1800-1900	6
1900-2000	7
2000-2100	5
2100-2200	7
2200-2300	1
2300-2400	3



Total 67

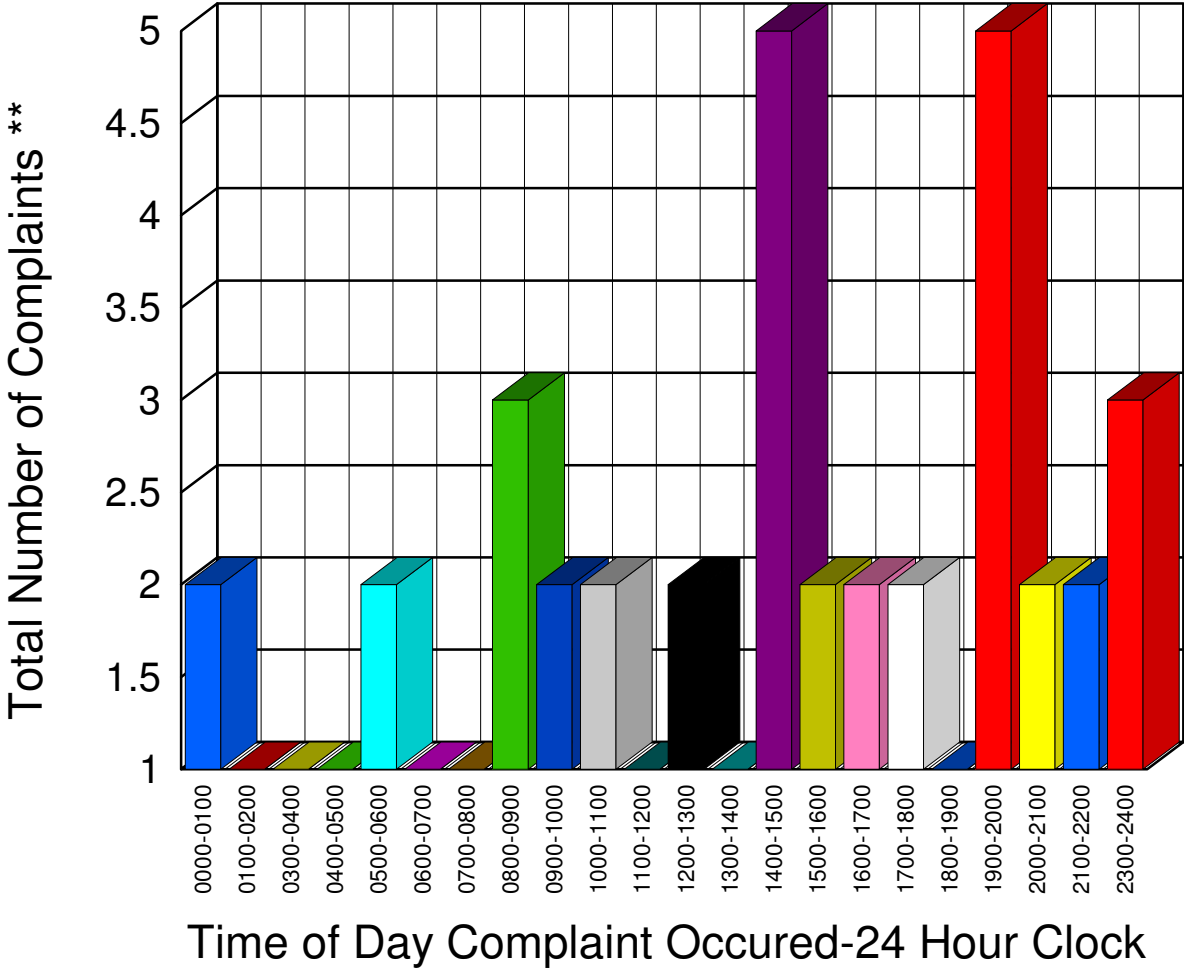
** Complaints taken by Muskegon Sheriff's Office

Muskegon County Sheriff's Office

Listing of Offense Reports - Holton Township - 04/01/2008 06:25:00 to 04/27/2008 15:58:42

0000-0100	2
0100-0200	1
0300-0400	1
0400-0500	1
0500-0600	2
0600-0700	1
0700-0800	1
0800-0900	3
0900-1000	2
1000-1100	2
1100-1200	1
1200-1300	2
1300-1400	1
1400-1500	5
1500-1600	2
1600-1700	2
1700-1800	2
1800-1900	1
1900-2000	5
2000-2100	2
2100-2200	2
2300-2400	3

Total 44

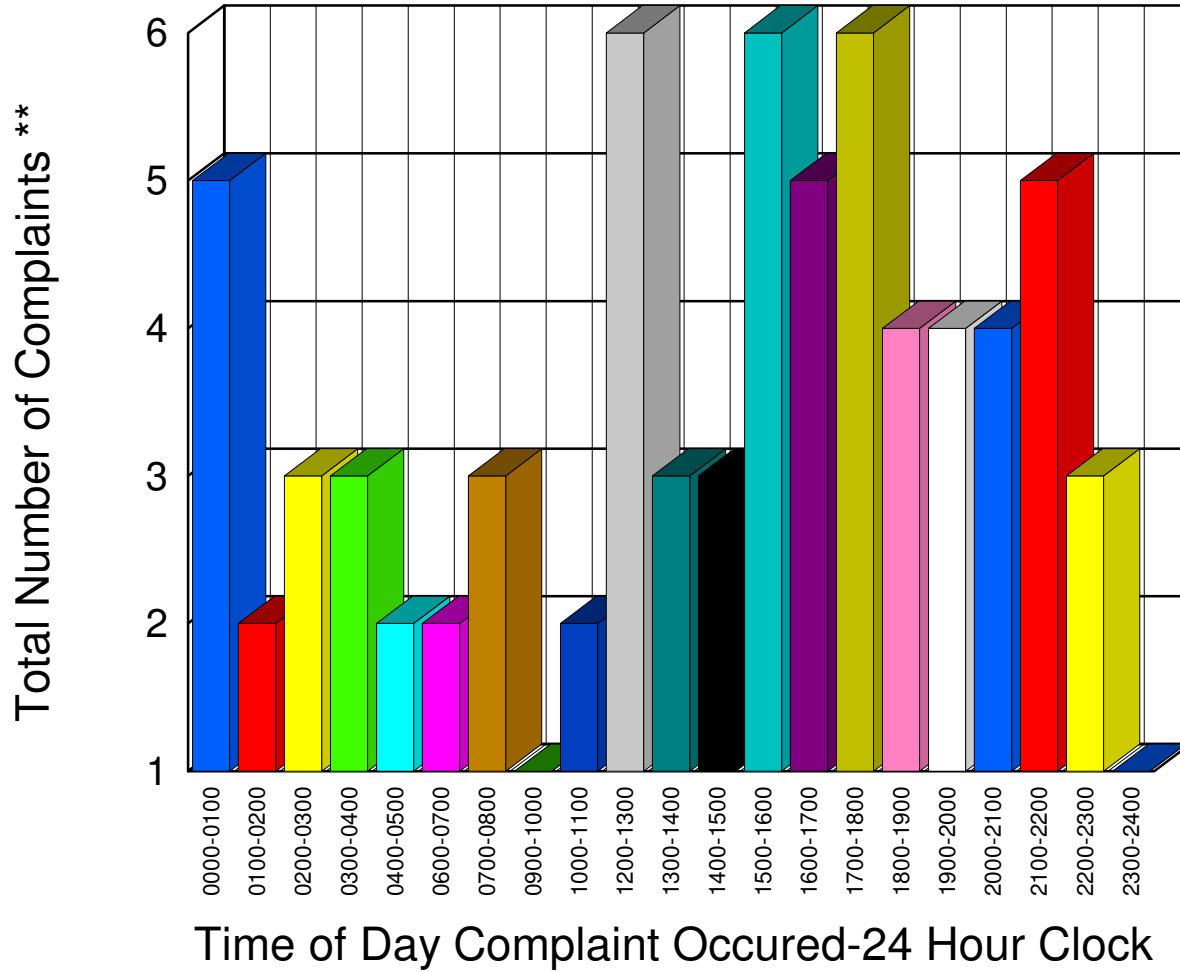


** Complaints taken by Muskegon Sheriff's Office

Muskegon County Sheriff's Office

Listing of Offense Reports - Laketon Township - 04/01/2008 17:44:00 to 04/30/2008 08:00:00

0000-0100	5
0100-0200	2
0200-0300	3
0300-0400	3
0400-0500	2
0600-0700	2
0700-0800	3
0900-1000	1
1000-1100	2
1200-1300	6
1300-1400	3
1400-1500	3
1500-1600	6
1600-1700	5
1700-1800	6
1800-1900	4
1900-2000	4
2000-2100	4
2100-2200	5
2200-2300	3
2300-2400	1



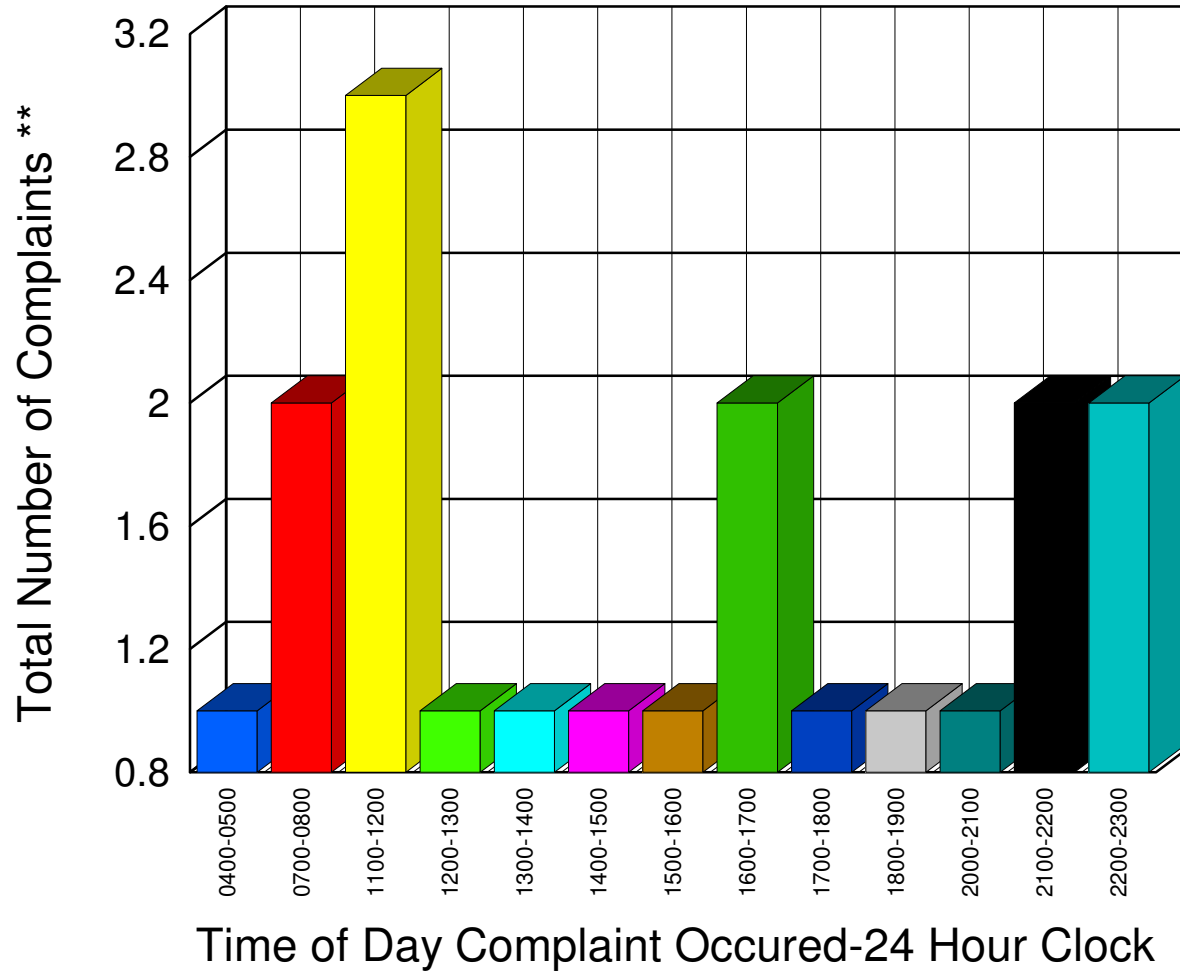
Total 73

** Complaints taken by Muskegon Sheriff's Office

Muskegon County Sheriff's Office

Listing of Offense Reports - Montague Township - 04/01/2008 12:00:00 to 04/30/2008 00:00:00

0400-0500	1
0700-0800	2
1100-1200	3
1200-1300	1
1300-1400	1
1400-1500	1
1500-1600	1
1600-1700	2
1700-1800	1
1800-1900	1
2000-2100	1
2100-2200	2
2200-2300	2



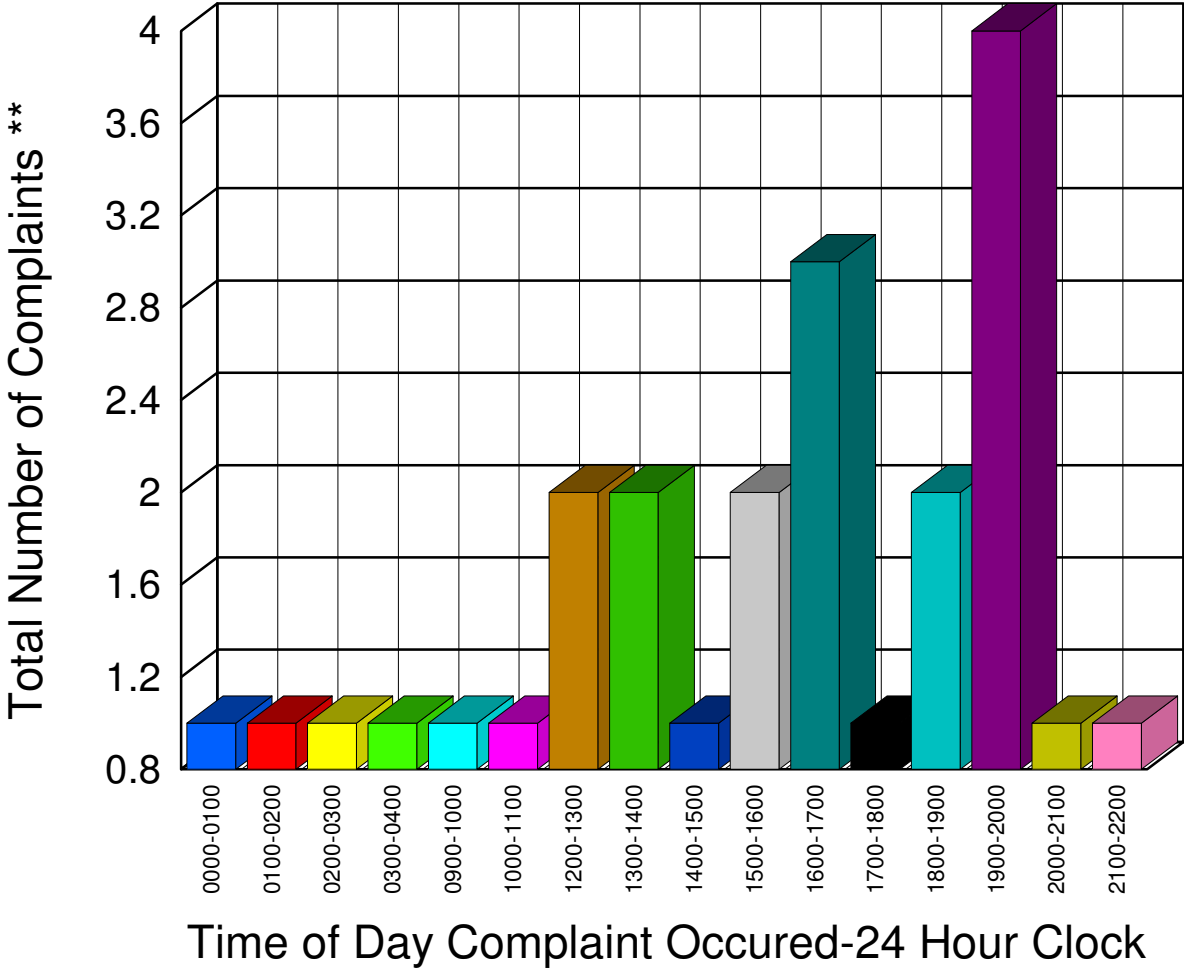
Total **19**

** Complaints taken by Muskegon Sheriff's Office

Muskegon County Sheriff's Office

Listing of Offense Reports - Moorland Township - 04/03/2008 04:00:13 to 04/26/2008 18:18:59

0000-0100	1
0100-0200	1
0200-0300	1
0300-0400	1
0900-1000	1
1000-1100	1
1200-1300	2
1300-1400	2
1400-1500	1
1500-1600	2
1600-1700	3
1700-1800	1
1800-1900	2
1900-2000	4
2000-2100	1
2100-2200	1



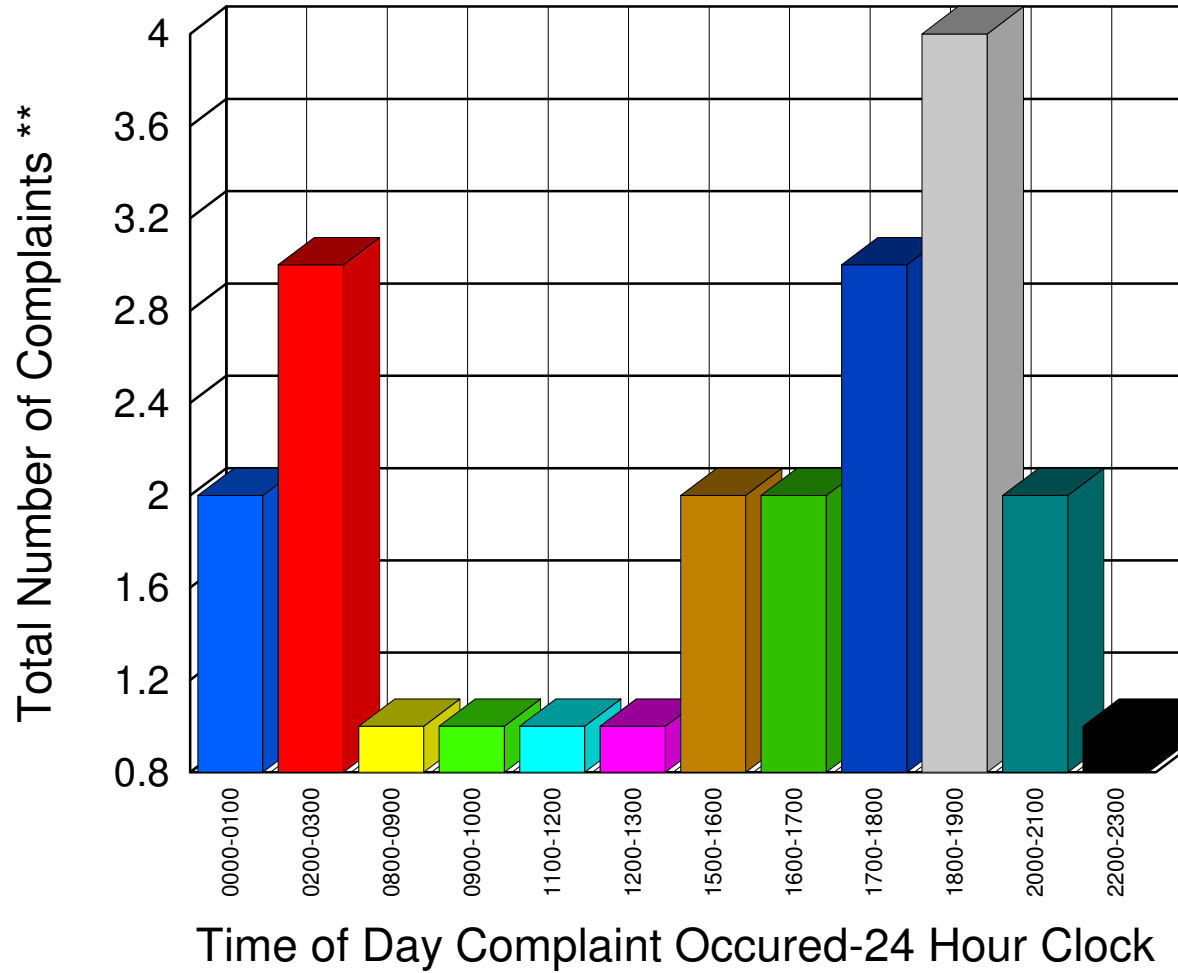
Total	25
-------	----

** Complaints taken by Muskegon Sheriff's Office

Muskegon County Sheriff's Office

Listing of Offense Reports - Ravenna Village and Township - 04/02/2008 08:19:00 to 04/27/2008 22:59:59

0000-0100	2
0200-0300	3
0800-0900	1
0900-1000	1
1100-1200	1
1200-1300	1
1500-1600	2
1600-1700	2
1700-1800	3
1800-1900	4
2000-2100	2
2200-2300	1



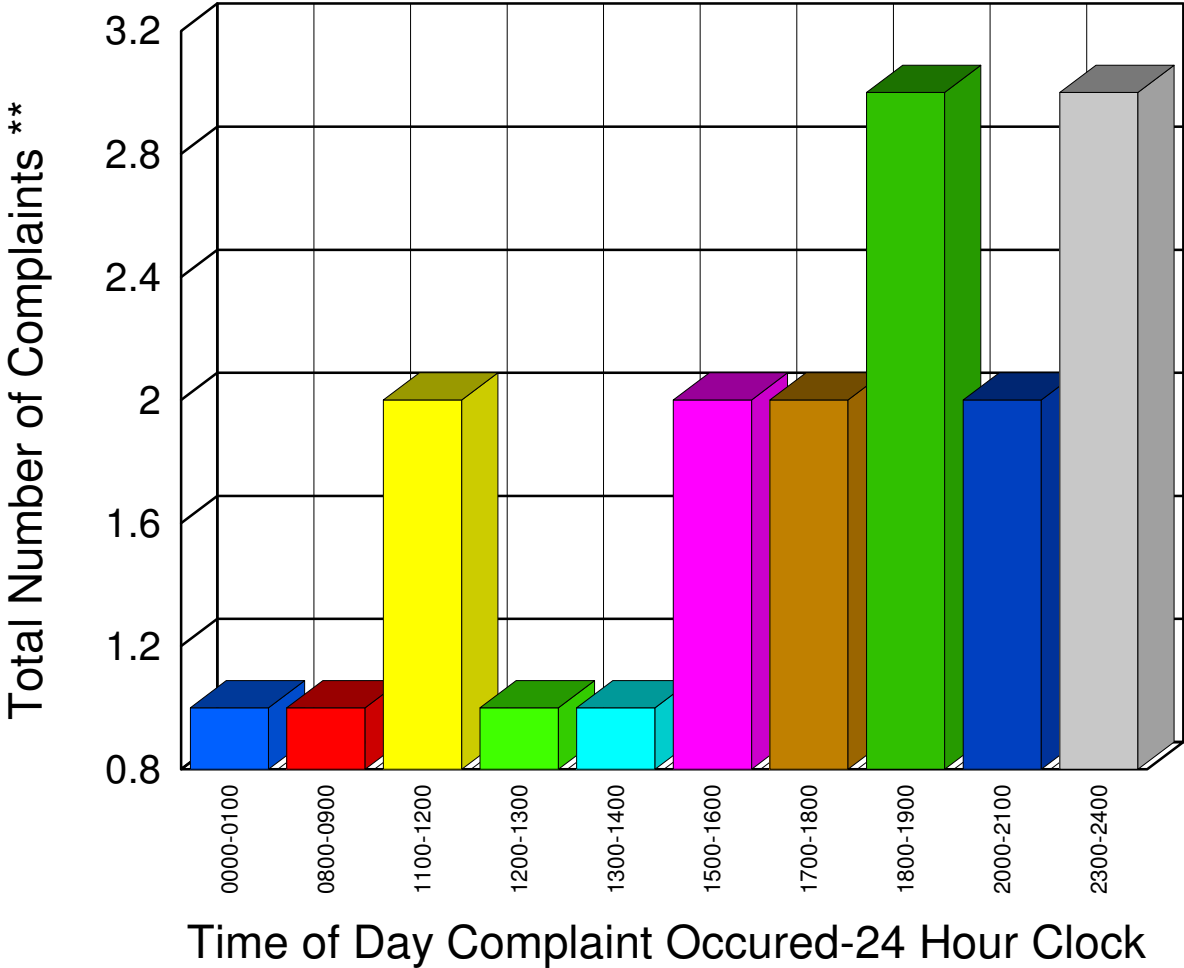
Total 23

** Complaints taken by Muskegon Sheriff's Office

Muskegon County Sheriff's Office

Listing of Offense Reports - Sullivan Township - 04/01/2008 23:15:00 to 04/30/2008 12:18:00

0000-0100	1
0800-0900	1
1100-1200	2
1200-1300	1
1300-1400	1
1500-1600	2
1700-1800	2
1800-1900	3
2000-2100	2
2300-2400	3



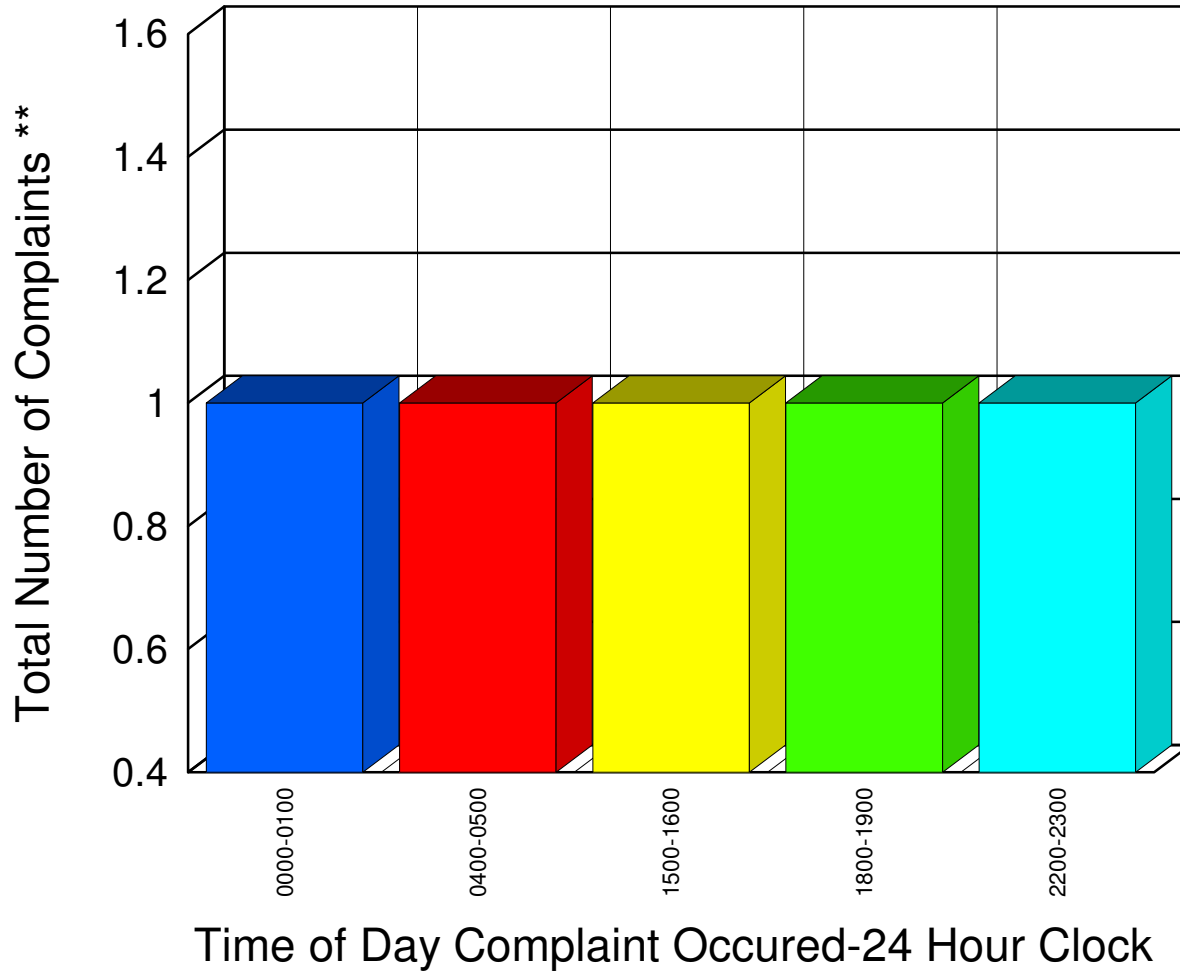
Total	18
-------	----

** Complaints taken by Muskegon Sheriff's Office

Muskegon County Sheriff's Office

Listing of Offense Reports - White River Township - 04/06/2008 04:33:59 to 04/25/2008 18:59:59

<u>0000-0100</u>	<u>1</u>
<u>0400-0500</u>	<u>1</u>
<u>1500-1600</u>	<u>1</u>
<u>1800-1900</u>	<u>1</u>
<u>2200-2300</u>	<u>1</u>



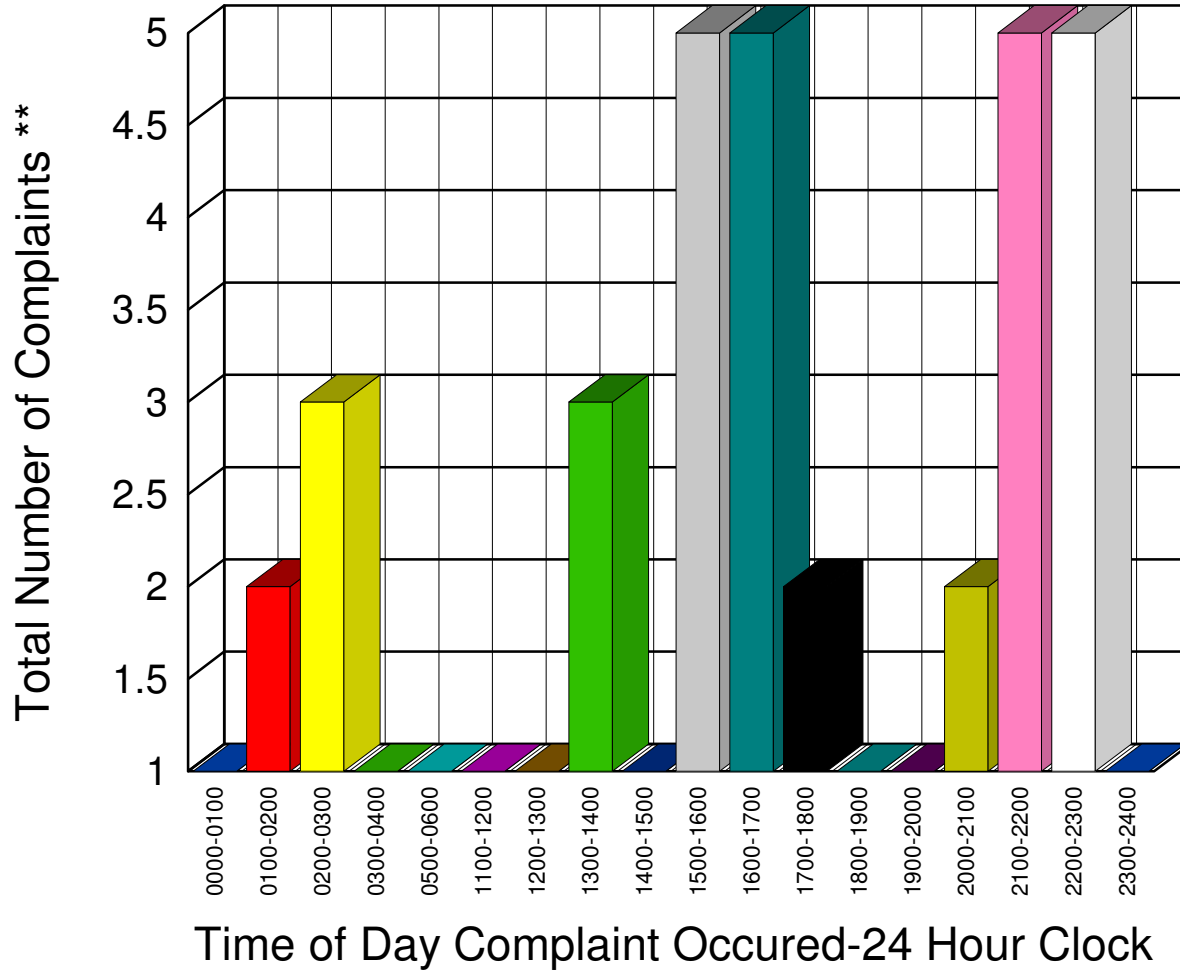
Total	5
-------	---

** Complaints taken by Muskegon Sheriff's Office

Muskegon County Sheriff's Office

Listing of Offense Reports - Whitehall Township - 04/01/2008 11:32:00 to 04/30/2008 22:19:59

0000-0100	1
0100-0200	2
0200-0300	3
0300-0400	1
0500-0600	1
1100-1200	1
1200-1300	1
1300-1400	3
1400-1500	1
1500-1600	5
1600-1700	5
1700-1800	2
1800-1900	1
1900-2000	1
2000-2100	2
2100-2200	5
2200-2300	5
2300-2400	1



Total **41**

** Complaints taken by Muskegon Sheriff's Office