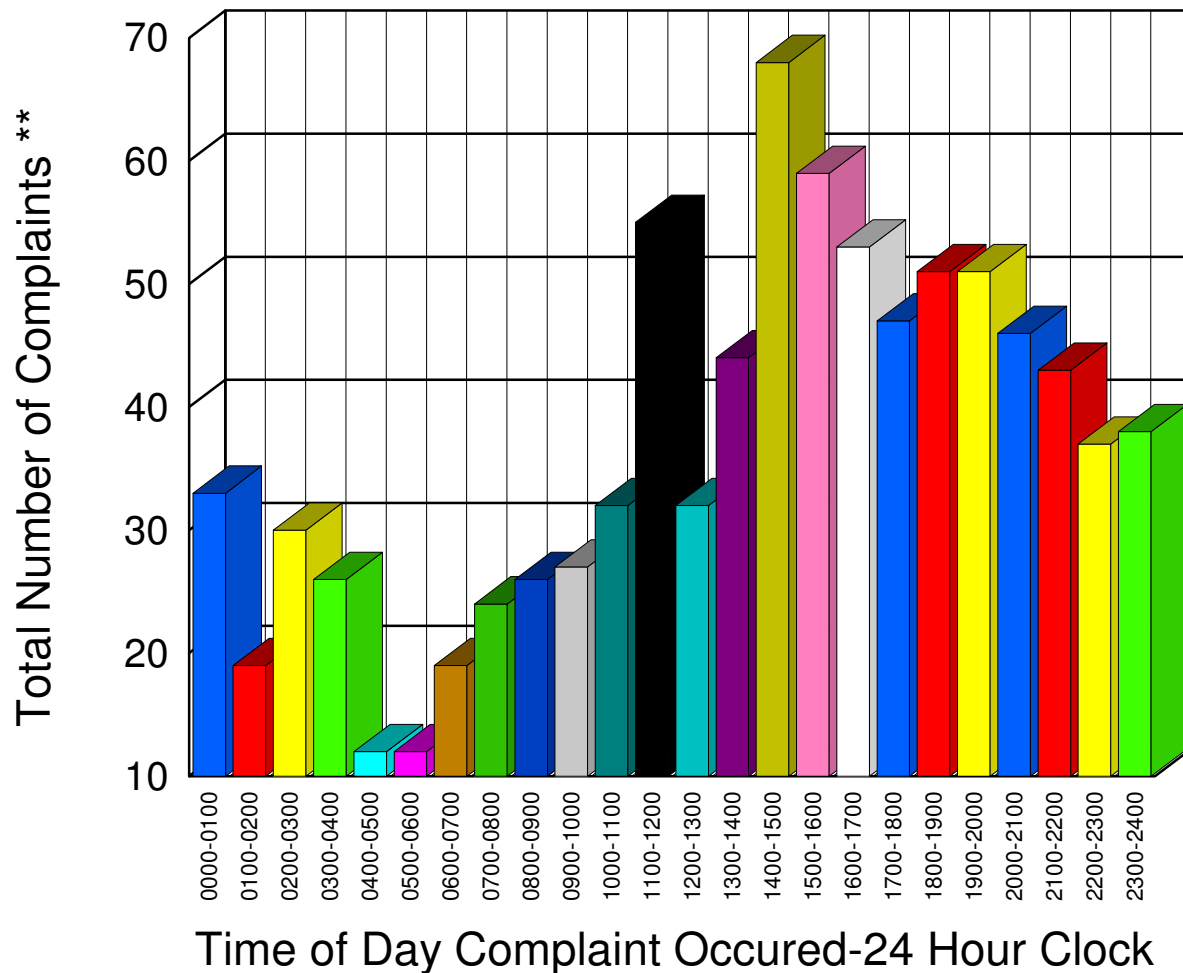


# Muskegon County Sheriff's Office

Listing of Offense Reports-- 12/01/2006 to 12/31/2006

0000-0100	33
0100-0200	19
0200-0300	30
0300-0400	26
0400-0500	12
0500-0600	12
0600-0700	19
0700-0800	24
0800-0900	26
0900-1000	27
1000-1100	32
1100-1200	55
1200-1300	32
1300-1400	44
1400-1500	68
1500-1600	59
1600-1700	53
1700-1800	47
1800-1900	51
1900-2000	51
2000-2100	46
2100-2200	43
2200-2300	37
2300-2400	38
<hr/>	
<hr/>	
Total	884

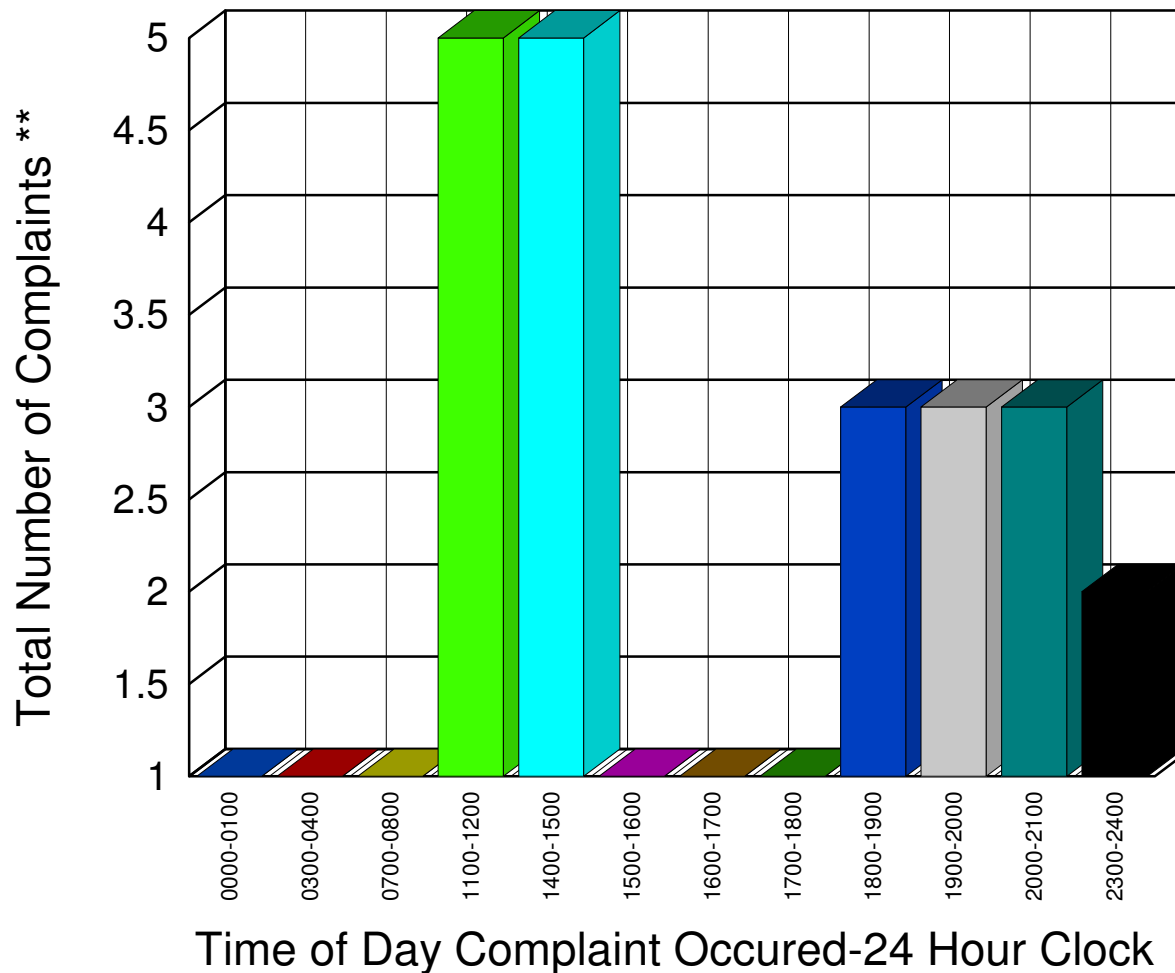


\*\* Complaints taken by Muskegon Sheriff's Office

# Muskegon County Sheriff's Office

Listing of Offense Reports--Blue Lake Township 12/01/2006 to 12/30/2006

0000-0100	1
0300-0400	1
0700-0800	1
1100-1200	5
1400-1500	5
1500-1600	1
1600-1700	1
1700-1800	1
1800-1900	3
1900-2000	3
2000-2100	3
2300-2400	2




---

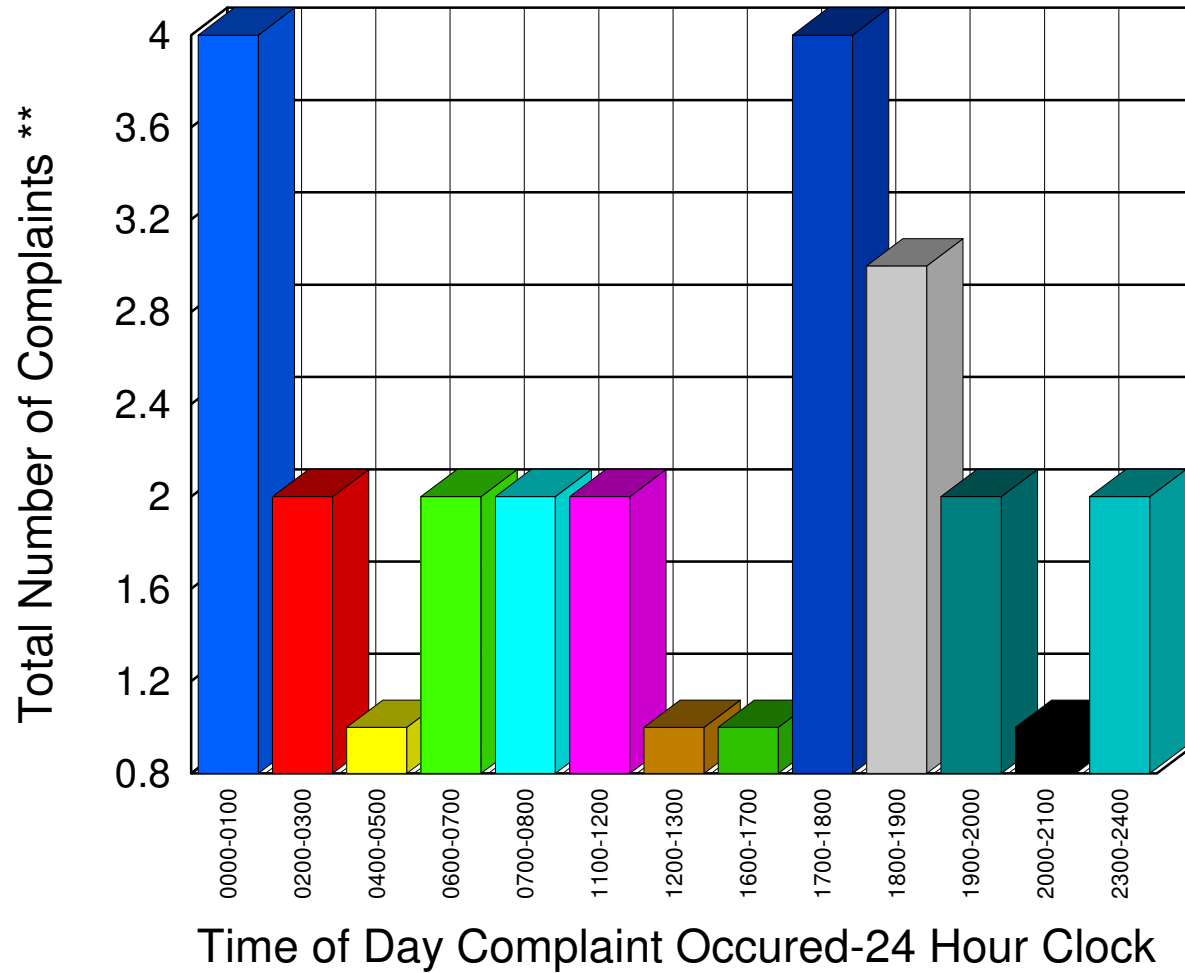
Total 27

\*\* Complaints taken by Muskegon Sheriff's Office

# Muskegon County Sheriff's Office

Listing of Offense Reports--Casnovia and Casnovia Township 12/01/2006 to 12/30/2006

0000-0100	4
0200-0300	2
0400-0500	1
0600-0700	2
0700-0800	2
1100-1200	2
1200-1300	1
1600-1700	1
1700-1800	4
1800-1900	3
1900-2000	2
2000-2100	1
2300-2400	2




---

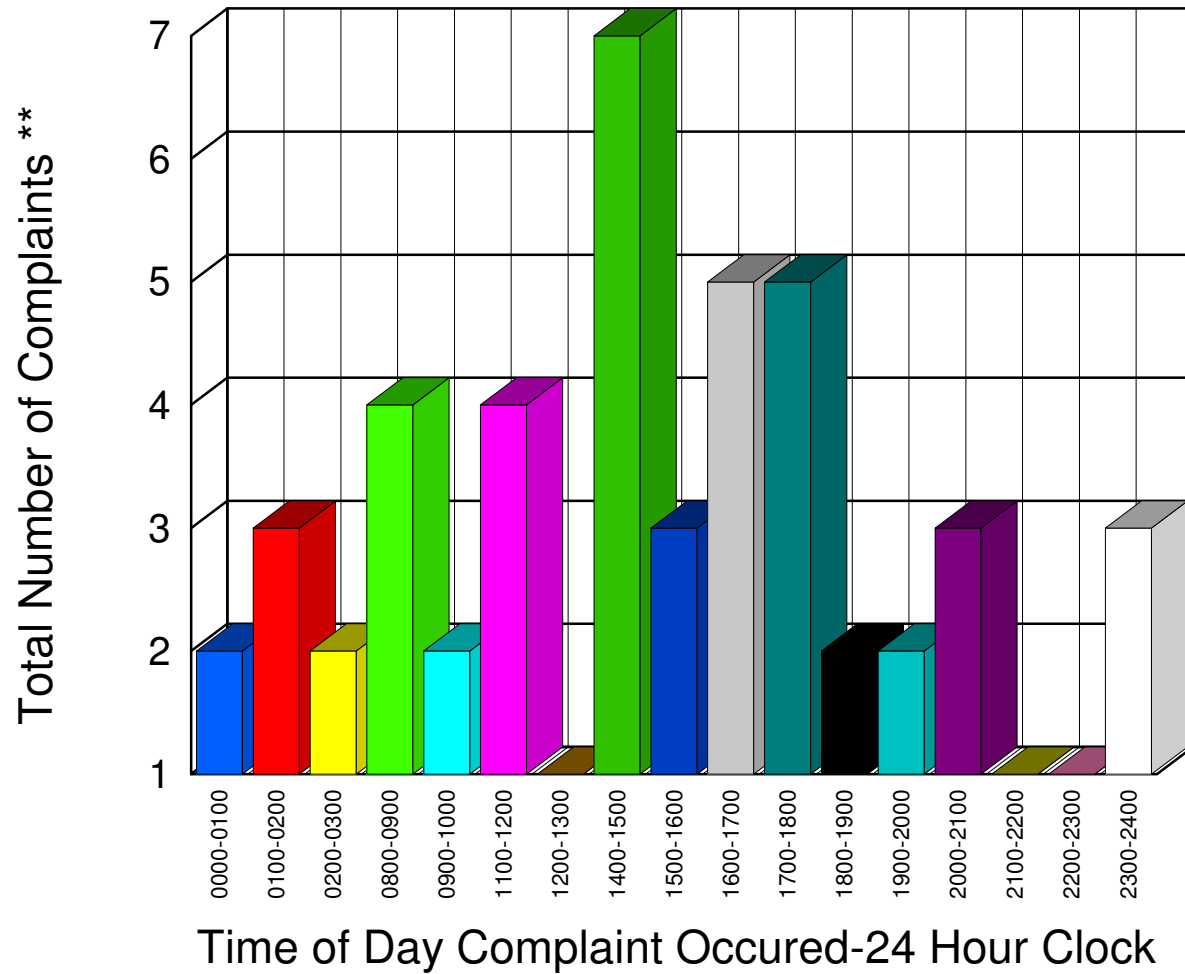
Total 27

\*\* Complaints taken by Muskegon Sheriff's Office

# Muskegon County Sheriff's Office

Listing of Offense Reports--Cedar Creek Township 12/01/2006 to 12/31/2006

0000-0100	2
0100-0200	3
0200-0300	2
0800-0900	4
0900-1000	2
1100-1200	4
1200-1300	1
1400-1500	7
1500-1600	3
1600-1700	5
1700-1800	5
1800-1900	2
1900-2000	2
2000-2100	3
2100-2200	1
2200-2300	1
2300-2400	3




---

Total 50

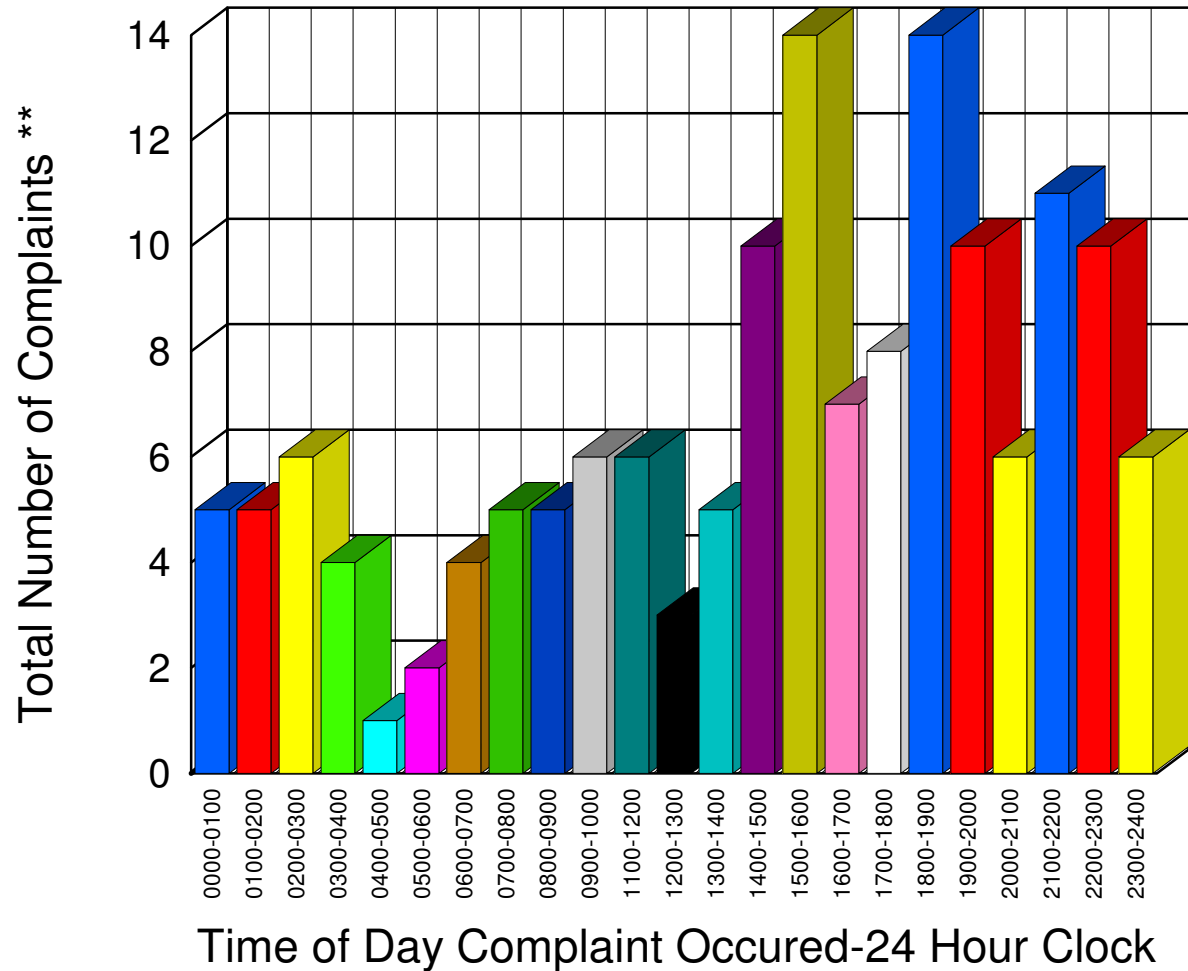
\*\* Complaints taken by Muskegon Sheriff's Office

# Muskegon County Sheriff's Office

Listing of Offense Reports--Lakewood Club and Dalton Township 12/01/2006 to 12/31/2006

0000-0100	5
0100-0200	5
0200-0300	6
0300-0400	4
0400-0500	1
0500-0600	2
0600-0700	4
0700-0800	5
0800-0900	5
0900-1000	6
1100-1200	6
1200-1300	3
1300-1400	5
1400-1500	10
1500-1600	14
1600-1700	7
1700-1800	8
1800-1900	14
1900-2000	10
2000-2100	6
2100-2200	11
2200-2300	10
2300-2400	6

Total 153



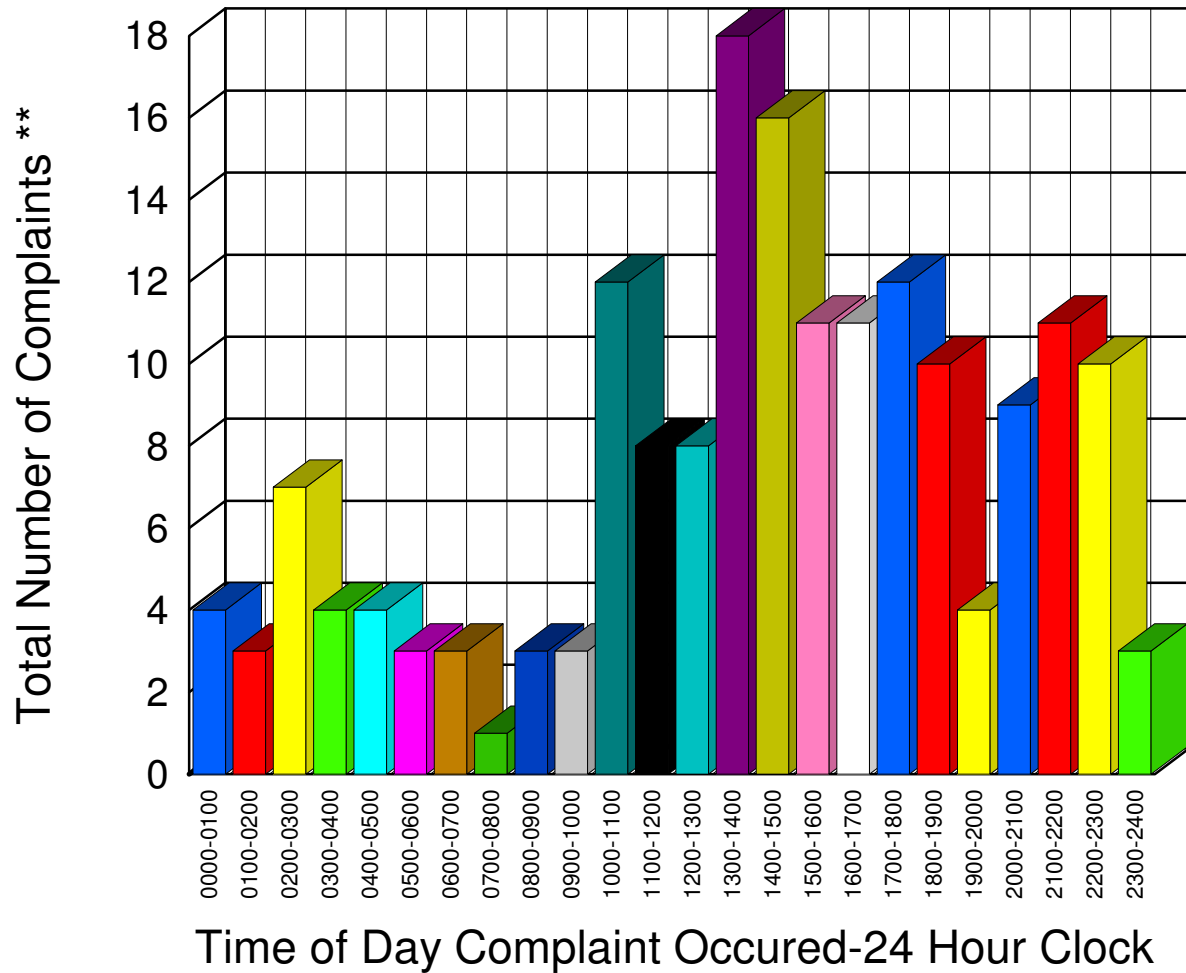
\*\* Complaints taken by Muskegon Sheriff's Office

# Muskegon County Sheriff's Office

Listing of Offense Reports--Egelston Township 12/01/2006 to 12/31/2006

0000-0100	4
0100-0200	3
0200-0300	7
0300-0400	4
0400-0500	4
0500-0600	3
0600-0700	3
0700-0800	1
0800-0900	3
0900-1000	3
1000-1100	12
1100-1200	8
1200-1300	8
1300-1400	18
1400-1500	16
1500-1600	11
1600-1700	11
1700-1800	12
1800-1900	10
1900-2000	4
2000-2100	9
2100-2200	11
2200-2300	10
2300-2400	3

Total 178

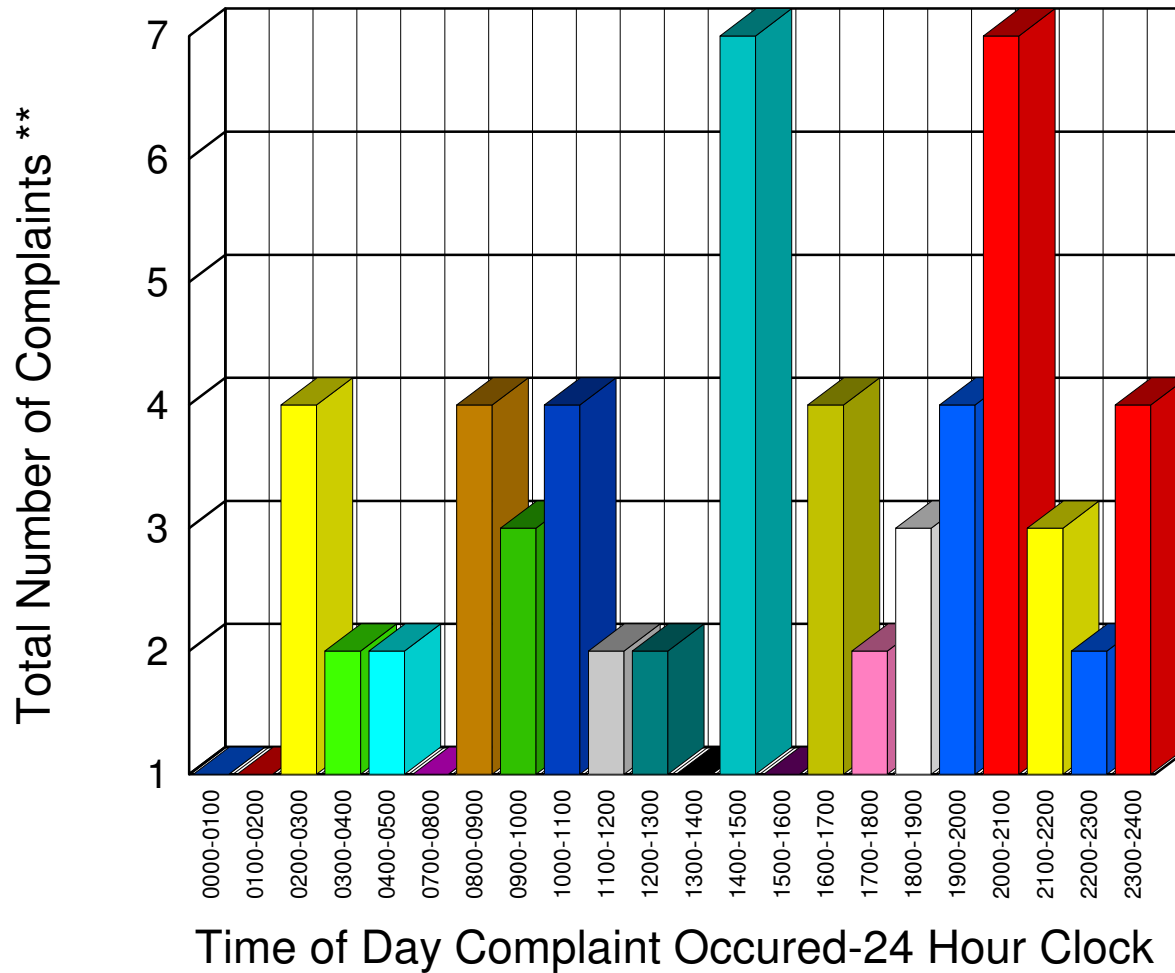


\*\* Complaints taken by Muskegon Sheriff's Office

# Muskegon County Sheriff's Office

Listing of Offense Reports--Fruitland Township 12/01/2006 to 12/31/2006

0000-0100	1
0100-0200	1
0200-0300	4
0300-0400	2
0400-0500	2
0700-0800	1
0800-0900	4
0900-1000	3
1000-1100	4
1100-1200	2
1200-1300	2
1300-1400	1
1400-1500	7
1500-1600	1
1600-1700	4
1700-1800	2
1800-1900	3
1900-2000	4
2000-2100	7
2100-2200	3
2200-2300	2
2300-2400	4



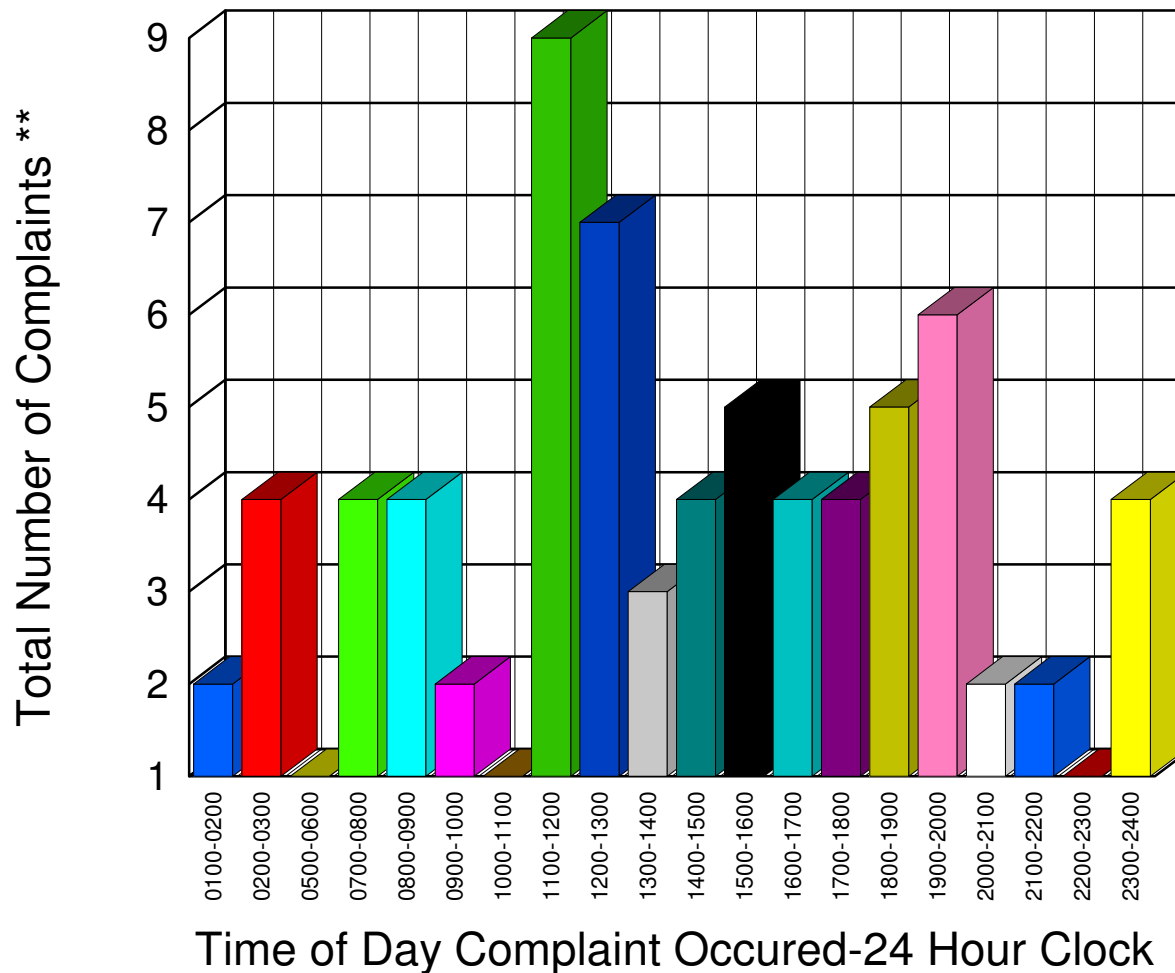
Total 64

\*\* Complaints taken by Muskegon Sheriff's Office

# Muskegon County Sheriff's Office

Listing of Offense Reports--HoltonTownship 12/01/2006 to 12/31/2006

0100-0200	2
0200-0300	4
0500-0600	1
0700-0800	4
0800-0900	4
0900-1000	2
1000-1100	1
1100-1200	9
1200-1300	7
1300-1400	3
1400-1500	4
1500-1600	5
1600-1700	4
1700-1800	4
1800-1900	5
1900-2000	6
2000-2100	2
2100-2200	2
2200-2300	1
2300-2400	4




---

Total 74

\*\* Complaints taken by Muskegon Sheriff's Office

# Muskegon County Sheriff's Office

Listing of Offense Reports--Laketon Township 12/01/2006 to 12/31/2006

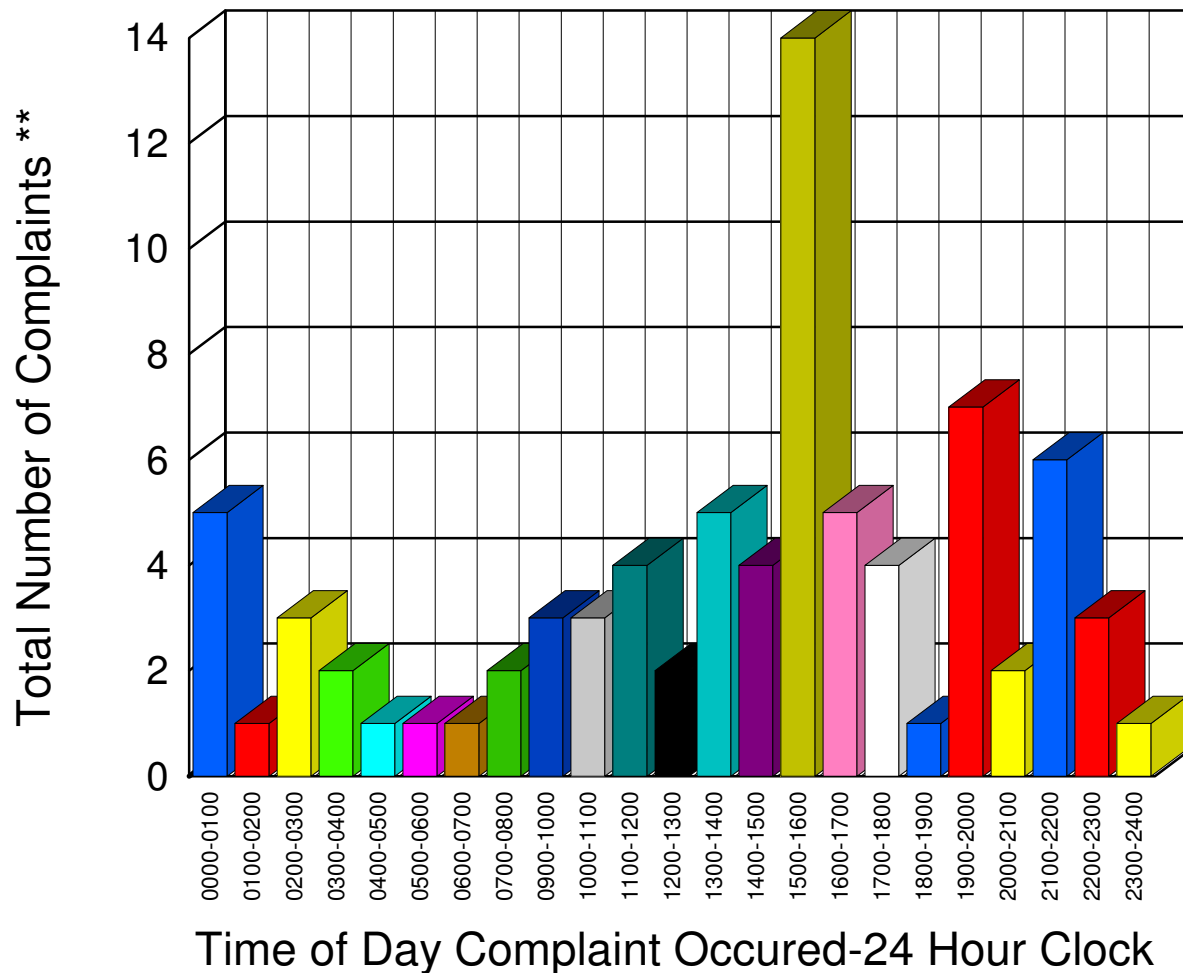
0000-0100	5
0100-0200	1
0200-0300	3
0300-0400	2
0400-0500	1
0500-0600	1
0600-0700	1
0700-0800	2
0900-1000	3
1000-1100	3
1100-1200	4
1200-1300	2
1300-1400	5
1400-1500	4
1500-1600	14
1600-1700	5
1700-1800	4
1800-1900	1
1900-2000	7
2000-2100	2
2100-2200	6
2200-2300	3
2300-2400	1

---



---

Total **80**

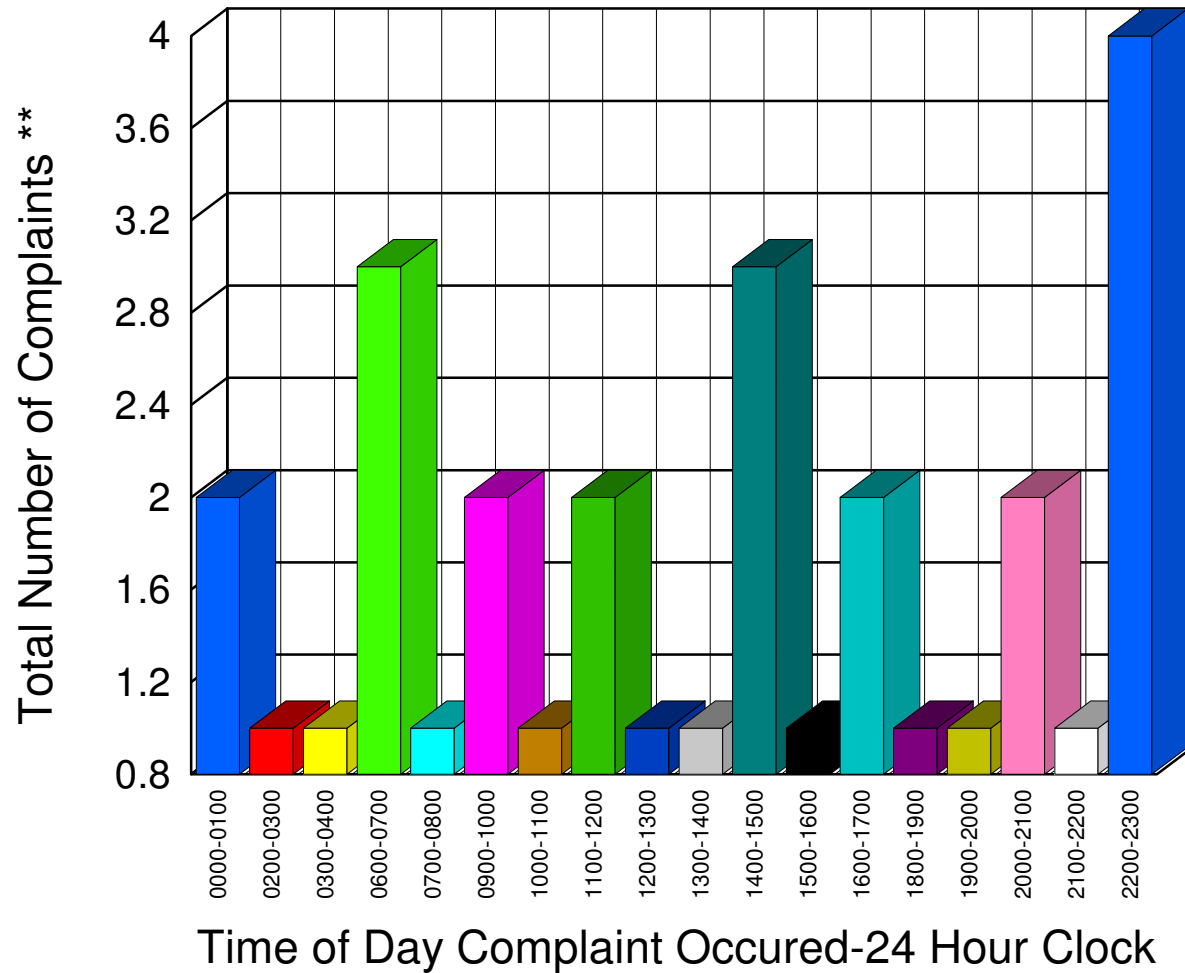


\*\* Complaints taken by Muskegon Sheriff's Office

# Muskegon County Sheriff's Office

Listing of Offense Reports--Montague Township 12/01/2006 to 12/31/2006

0000-0100	2
0200-0300	1
0300-0400	1
0600-0700	3
0700-0800	1
0900-1000	2
1000-1100	1
1100-1200	2
1200-1300	1
1300-1400	1
1400-1500	3
1500-1600	1
1600-1700	2
1800-1900	1
1900-2000	1
2000-2100	2
2100-2200	1
2200-2300	4




---

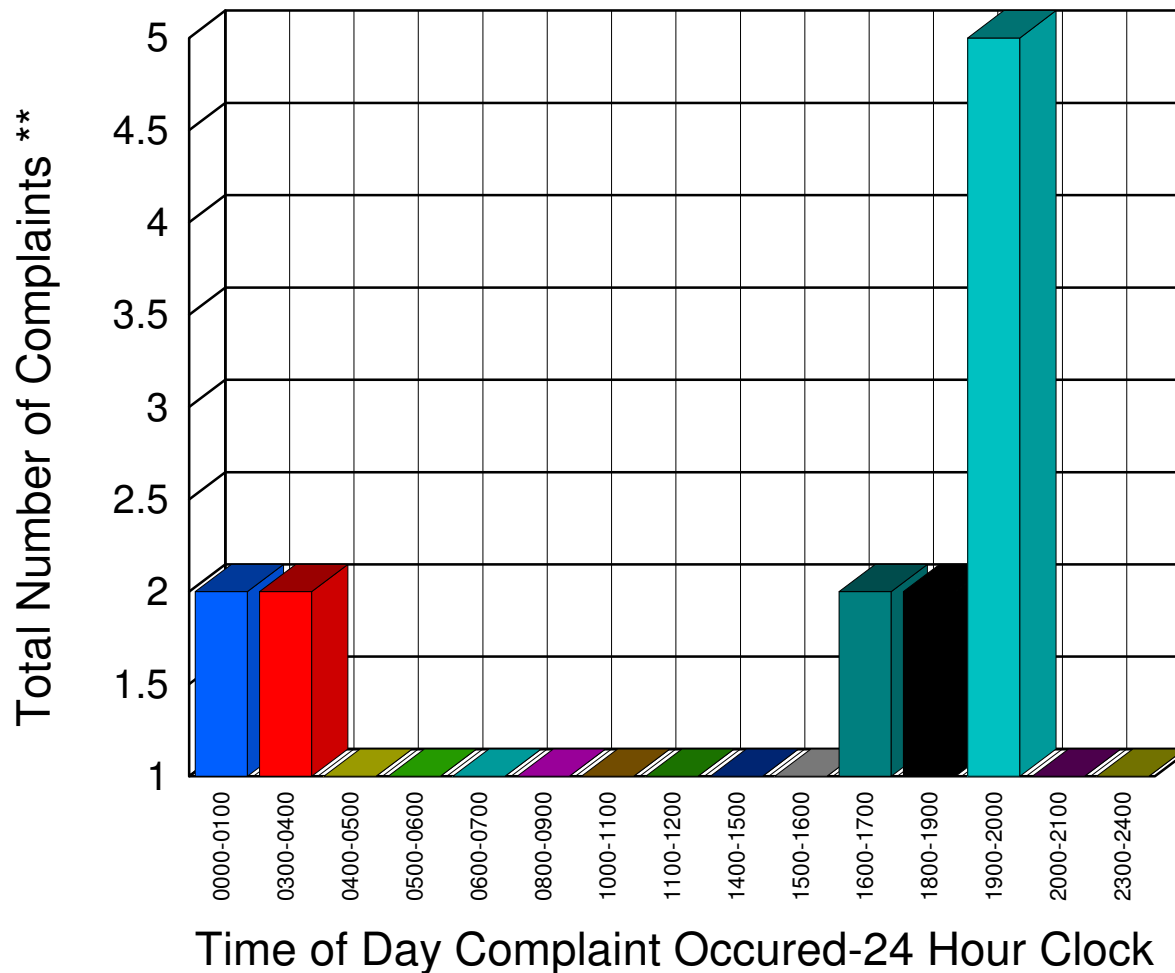
Total **30**

\*\* Complaints taken by Muskegon Sheriff's Office

# Muskegon County Sheriff's Office

Listing of Offense Reports--Moorland Township 12/01/2006 to 12/29/2006

0000-0100	2
0300-0400	2
0400-0500	1
0500-0600	1
0600-0700	1
0800-0900	1
1000-1100	1
1100-1200	1
1400-1500	1
1500-1600	1
1600-1700	2
1800-1900	2
1900-2000	5
2000-2100	1
2300-2400	1




---

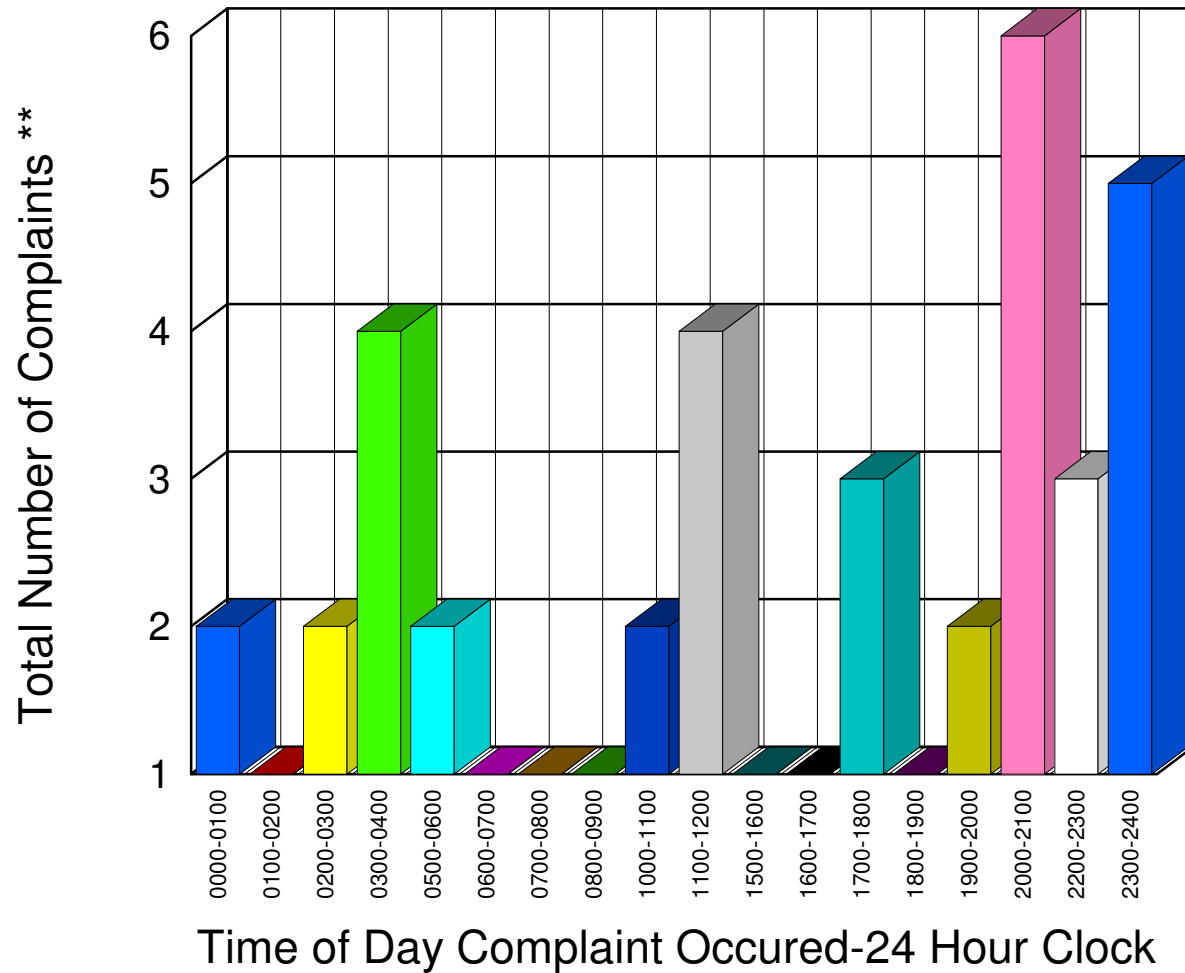
Total **23**

\*\* Complaints taken by Muskegon Sheriff's Office

# Muskegon County Sheriff's Office

Listing of Offense Reports--Ravenna and Ravenna Township 12/01/2006 to 12/31/2006

0000-0100	2
0100-0200	1
0200-0300	2
0300-0400	4
0500-0600	2
0600-0700	1
0700-0800	1
0800-0900	1
1000-1100	2
1100-1200	4
1500-1600	1
1600-1700	1
1700-1800	3
1800-1900	1
1900-2000	2
2000-2100	6
2200-2300	3
2300-2400	5




---

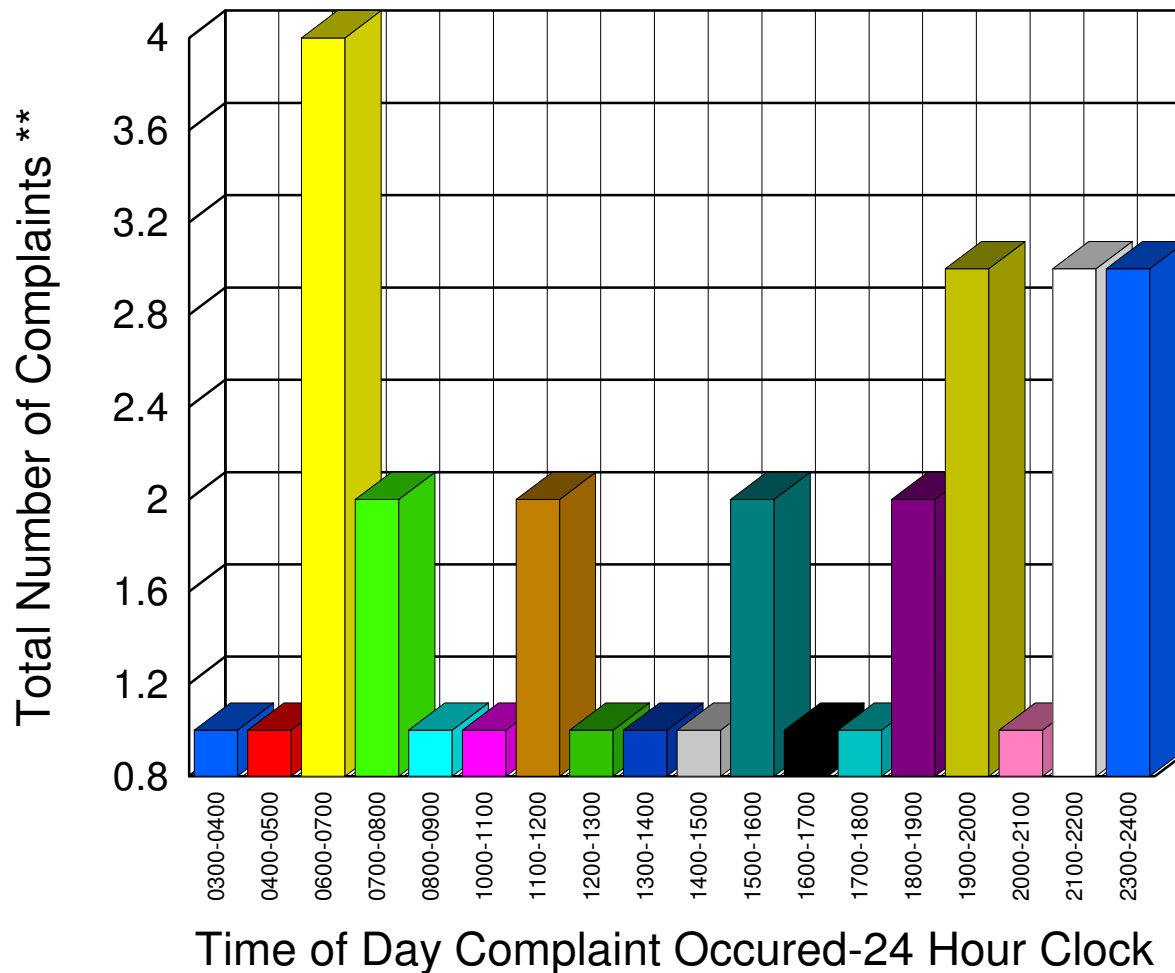
Total 42

\*\* Complaints taken by Muskegon Sheriff's Office

# Muskegon County Sheriff's Office

Listing of Offense Reports--Sullivan Township 12/01/2006 to 12/30/2006

0300-0400	1
0400-0500	1
0600-0700	4
0700-0800	2
0800-0900	1
1000-1100	1
1100-1200	2
1200-1300	1
1300-1400	1
1400-1500	1
1500-1600	2
1600-1700	1
1700-1800	1
1800-1900	2
1900-2000	3
2000-2100	1
2100-2200	3
2300-2400	3




---

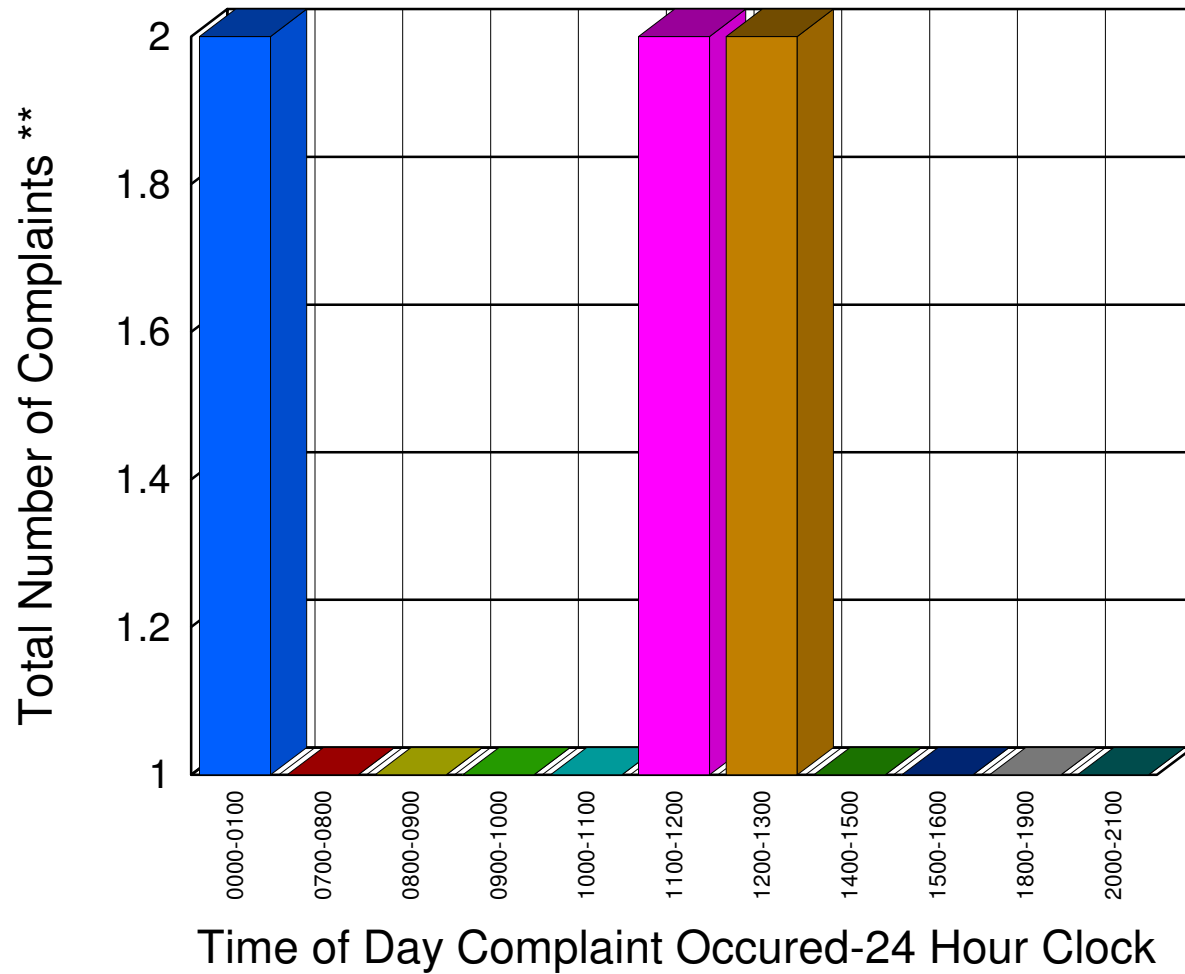
Total 31

\*\* Complaints taken by Muskegon Sheriff's Office

# Muskegon County Sheriff's Office

Listing of Offense Reports--White River Township 12/03/2006 to 12/30/2006

0000-0100	2
0700-0800	1
0800-0900	1
0900-1000	1
1000-1100	1
1100-1200	2
1200-1300	2
1400-1500	1
1500-1600	1
1800-1900	1
2000-2100	1




---

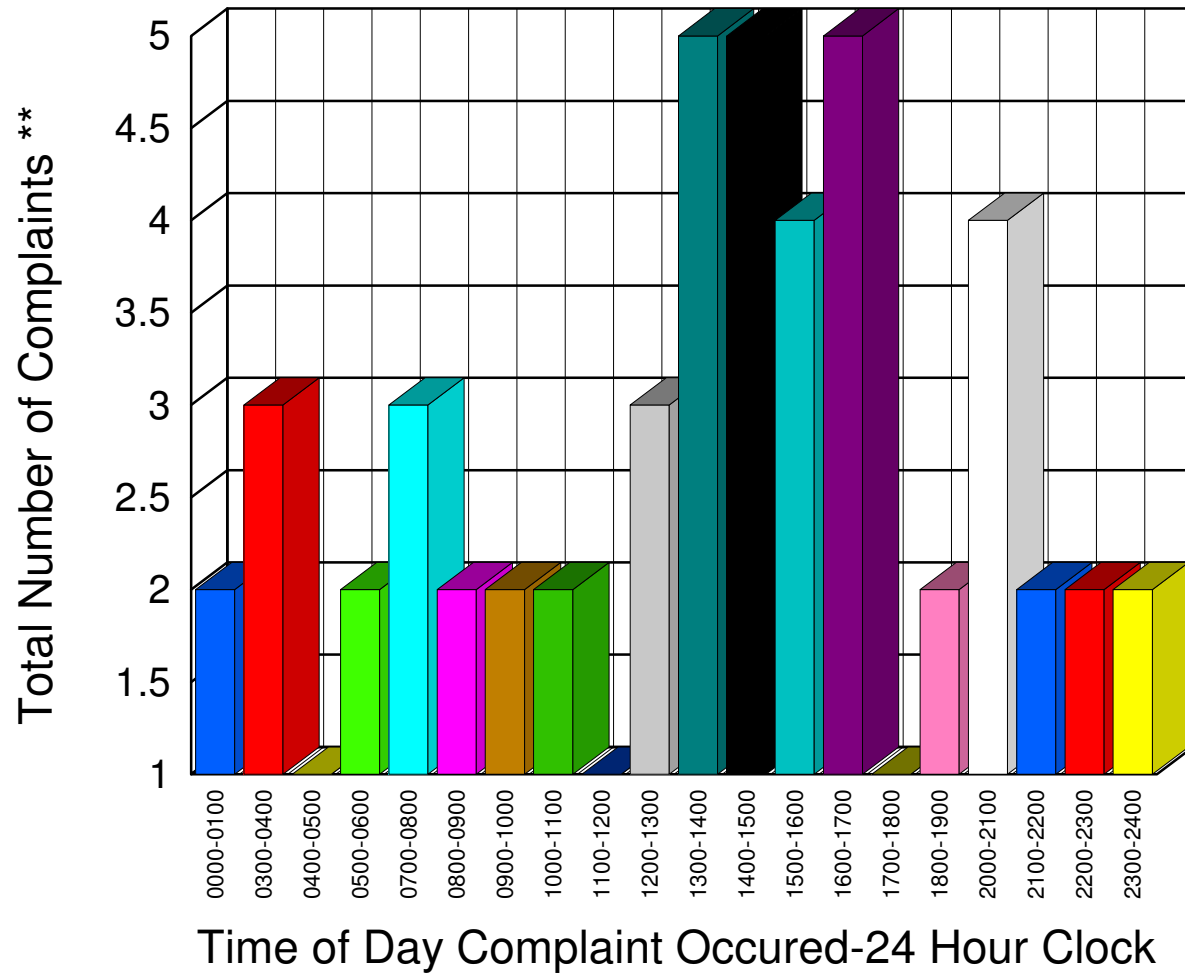
Total 14

\*\* Complaints taken by Muskegon Sheriff's Office

# Muskegon County Sheriff's Office

Listing of Offense Reports--Whitehall Township 12/01/2006 to 12/30/2006

0000-0100	2
0300-0400	3
0400-0500	1
0500-0600	2
0700-0800	3
0800-0900	2
0900-1000	2
1000-1100	2
1100-1200	1
1200-1300	3
1300-1400	5
1400-1500	5
1500-1600	4
1600-1700	5
1700-1800	1
1800-1900	2
2000-2100	4
2100-2200	2
2200-2300	2
2300-2400	2




---

Total 53

\*\* Complaints taken by Muskegon Sheriff's Office