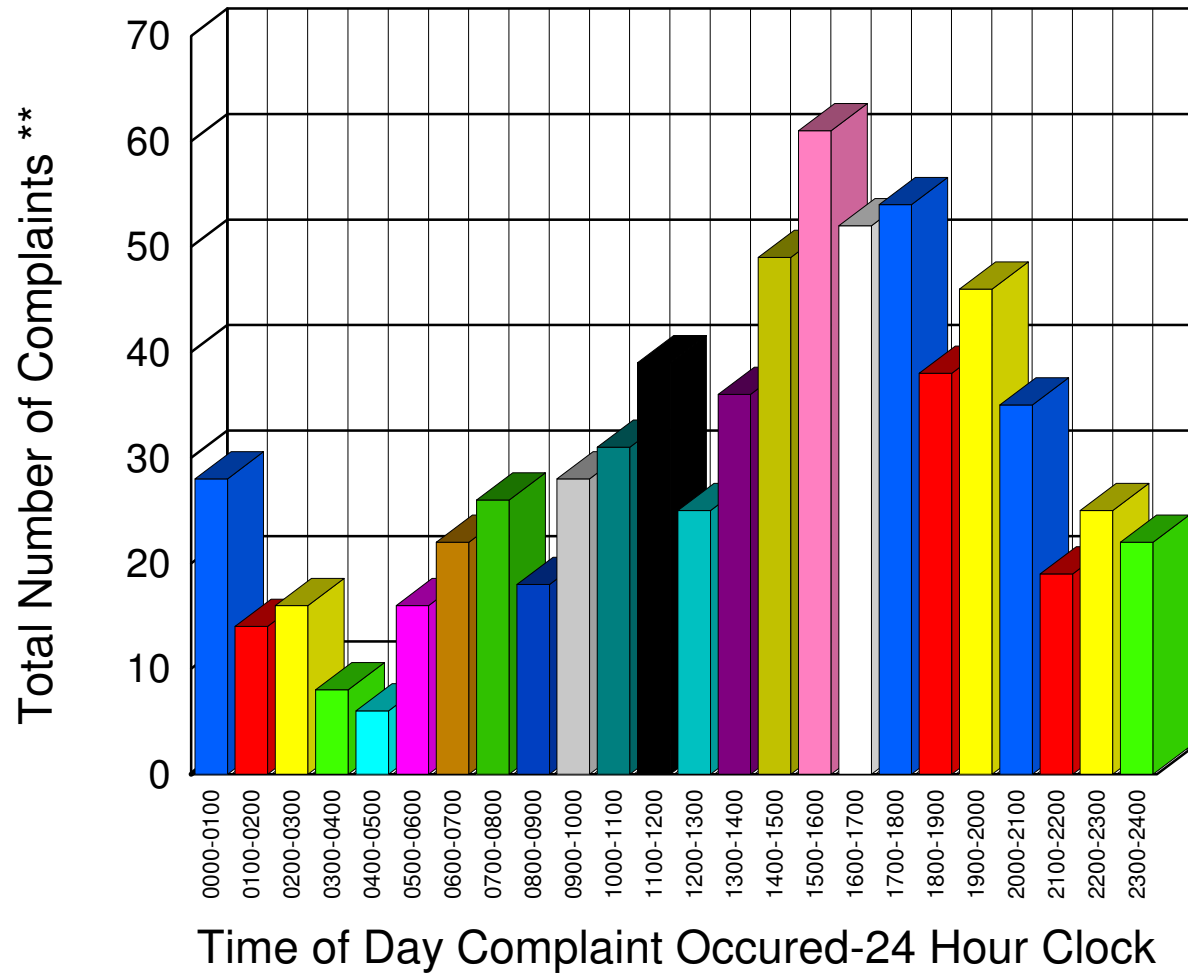


# Muskegon County Sheriff's Office

Listing of Offense Reports-- 02/01/2007 to 02/28/2007

0000-0100	28
0100-0200	14
0200-0300	16
0300-0400	8
0400-0500	6
0500-0600	16
0600-0700	22
0700-0800	26
0800-0900	18
0900-1000	28
1000-1100	31
1100-1200	39
1200-1300	25
1300-1400	36
1400-1500	49
1500-1600	61
1600-1700	52
1700-1800	54
1800-1900	38
1900-2000	46
2000-2100	35
2100-2200	19
2200-2300	25
2300-2400	22

Total 714

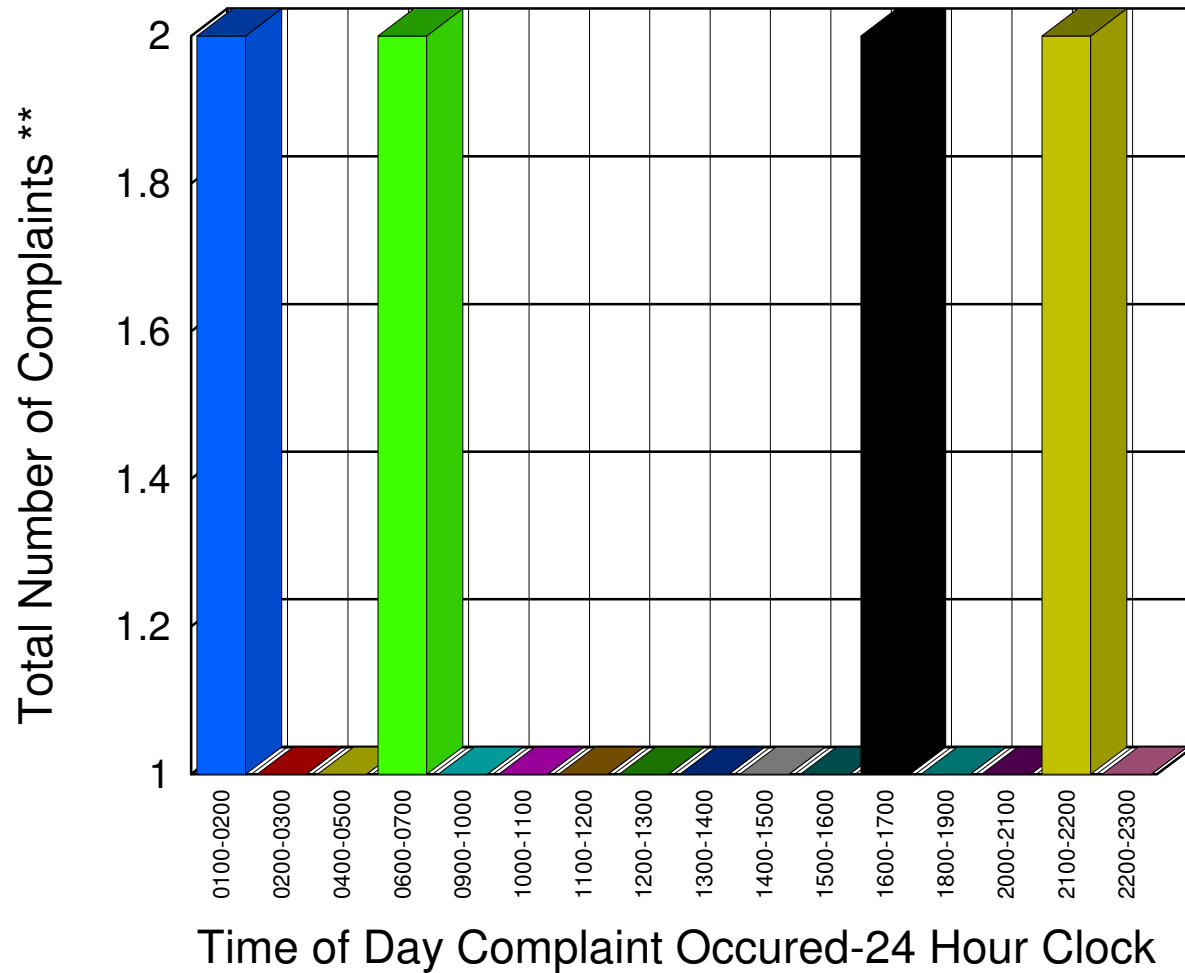


\*\* Complaints taken by Muskegon Sheriff's Office

# Muskegon County Sheriff's Office

Listing of Offense Reports--Blue Lake Township 02/01/2007 to 02/28/2007

0100-0200	2
0200-0300	1
0400-0500	1
0600-0700	2
0900-1000	1
1000-1100	1
1100-1200	1
1200-1300	1
1300-1400	1
1400-1500	1
1500-1600	1
1600-1700	2
1800-1900	1
2000-2100	1
2100-2200	2
2200-2300	1




---

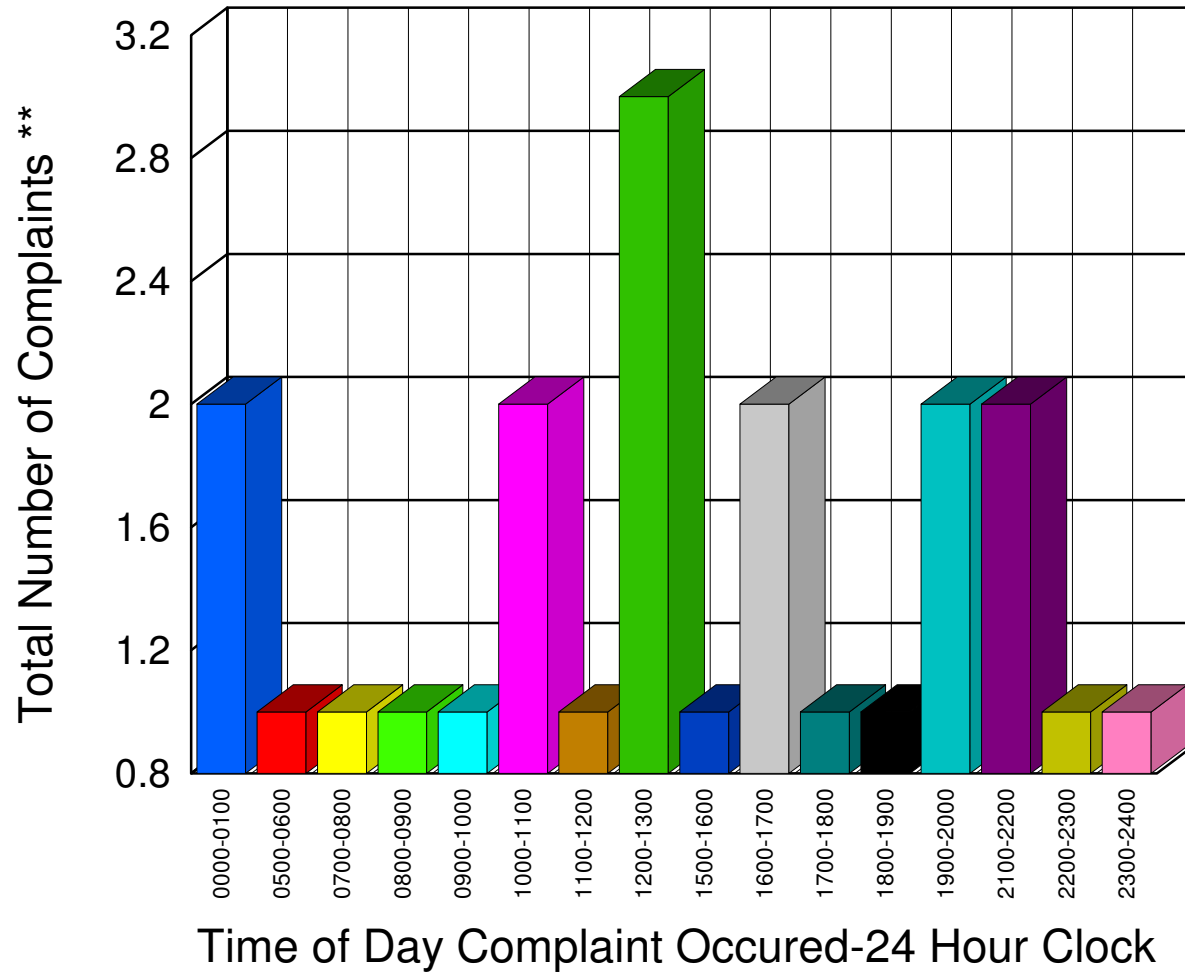
Total **20**

\*\* Complaints taken by Muskegon Sheriff's Office

# Muskegon County Sheriff's Office

Listing of Offense Reports--Casnovia and Casnovia Township 02/01/2007 to 02/28/2007

0000-0100	2
0500-0600	1
0700-0800	1
0800-0900	1
0900-1000	1
1000-1100	2
1100-1200	1
1200-1300	3
1500-1600	1
1600-1700	2
1700-1800	1
1800-1900	1
1900-2000	2
2100-2200	2
2200-2300	1
2300-2400	1




---

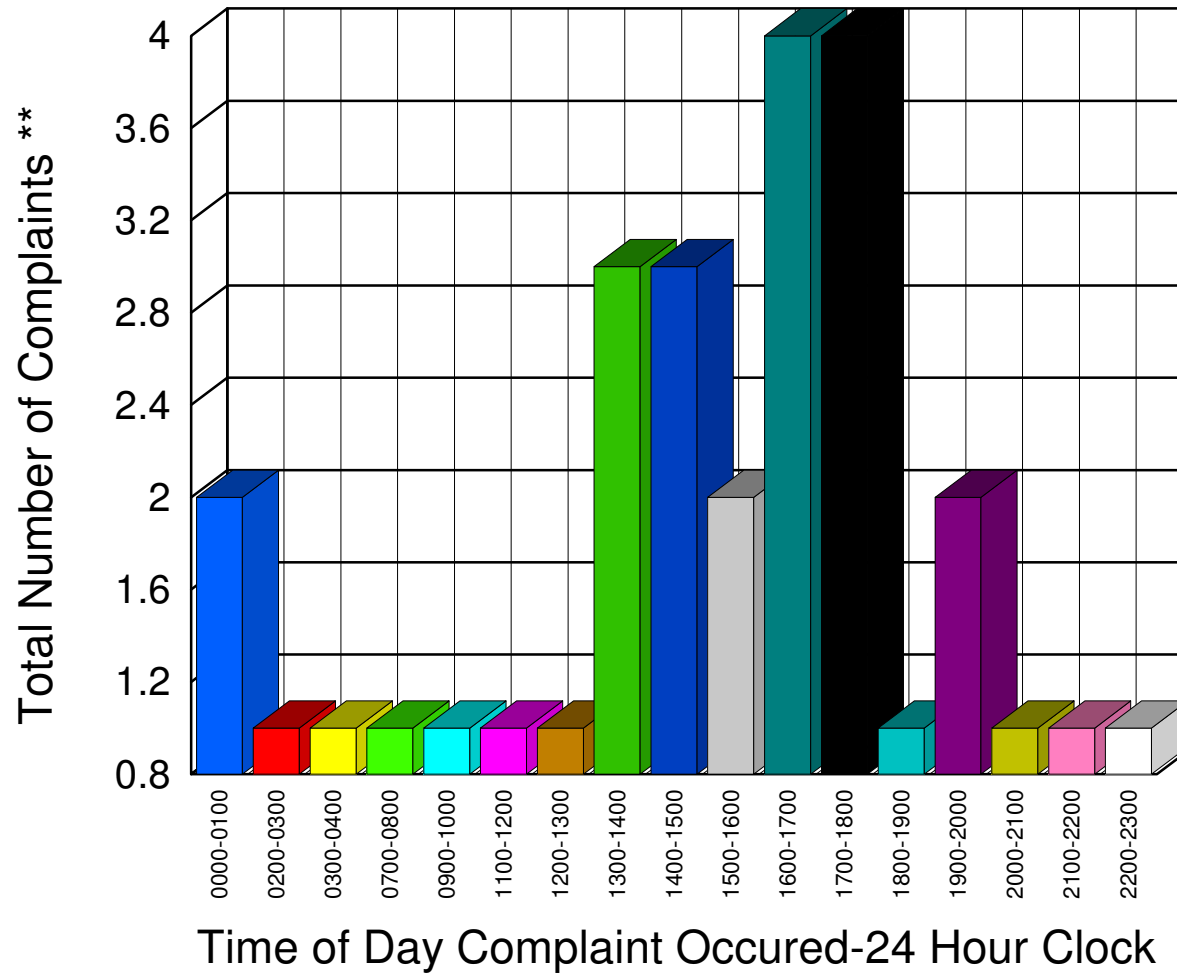
Total 23

\*\* Complaints taken by Muskegon Sheriff's Office

# Muskegon County Sheriff's Office

Listing of Offense Reports--Cedar Creek Township 02/01/2007 to 02/28/2007

0000-0100	2
0200-0300	1
0300-0400	1
0700-0800	1
0900-1000	1
1100-1200	1
1200-1300	1
1300-1400	3
1400-1500	3
1500-1600	2
1600-1700	4
1700-1800	4
1800-1900	1
1900-2000	2
2000-2100	1
2100-2200	1
2200-2300	1




---



---

Total	30
-------	----

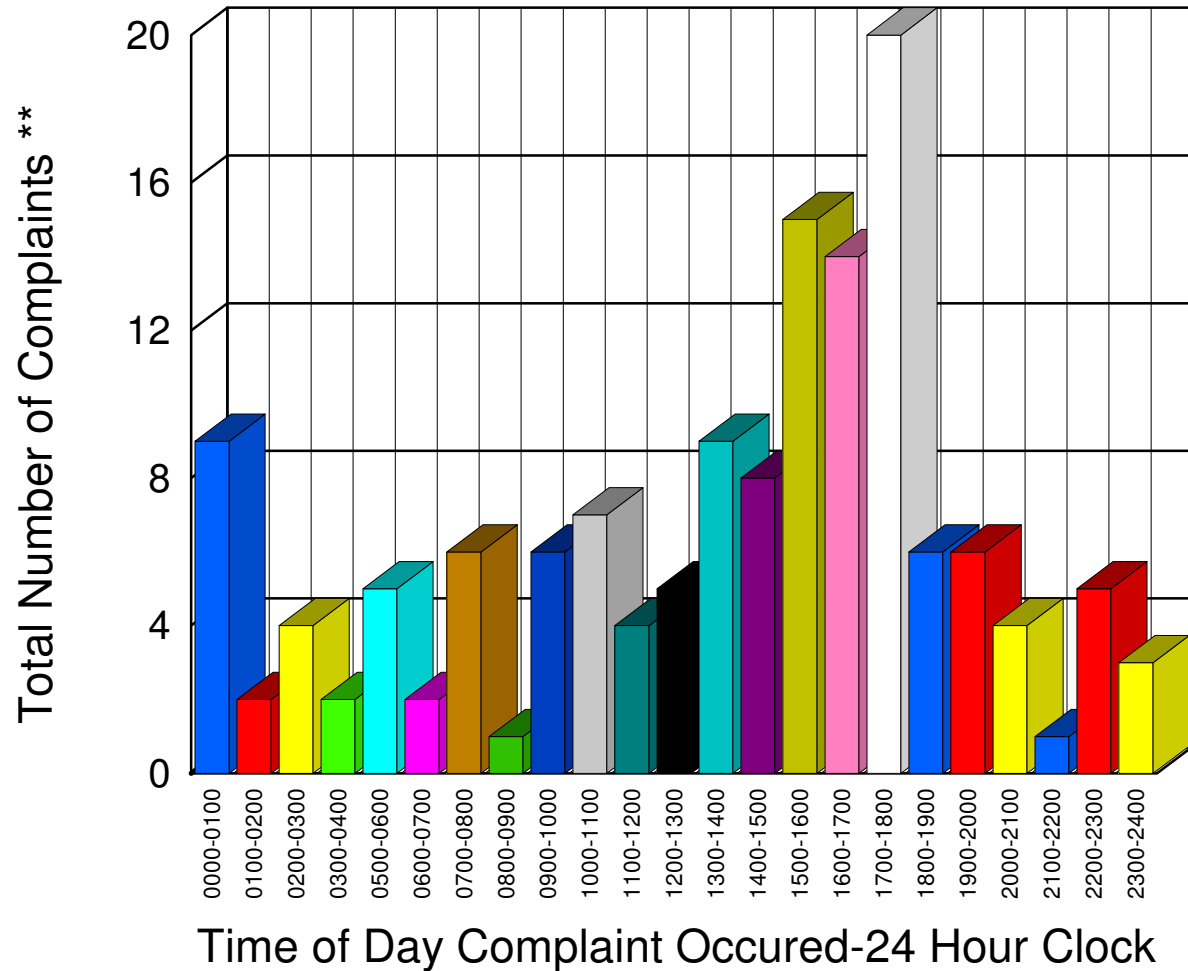
\*\* Complaints taken by Muskegon Sheriff's Office

# Muskegon County Sheriff's Office

Listing of Offense Reports--Lakewood Club and Dalton Township 02/01/2007 to 02/28/2007

0000-0100	9
0100-0200	2
0200-0300	4
0300-0400	2
0500-0600	5
0600-0700	2
0700-0800	6
0800-0900	1
0900-1000	6
1000-1100	7
1100-1200	4
1200-1300	5
1300-1400	9
1400-1500	8
1500-1600	15
1600-1700	14
1700-1800	20
1800-1900	6
1900-2000	6
2000-2100	4
2100-2200	1
2200-2300	5
2300-2400	3

Total 144

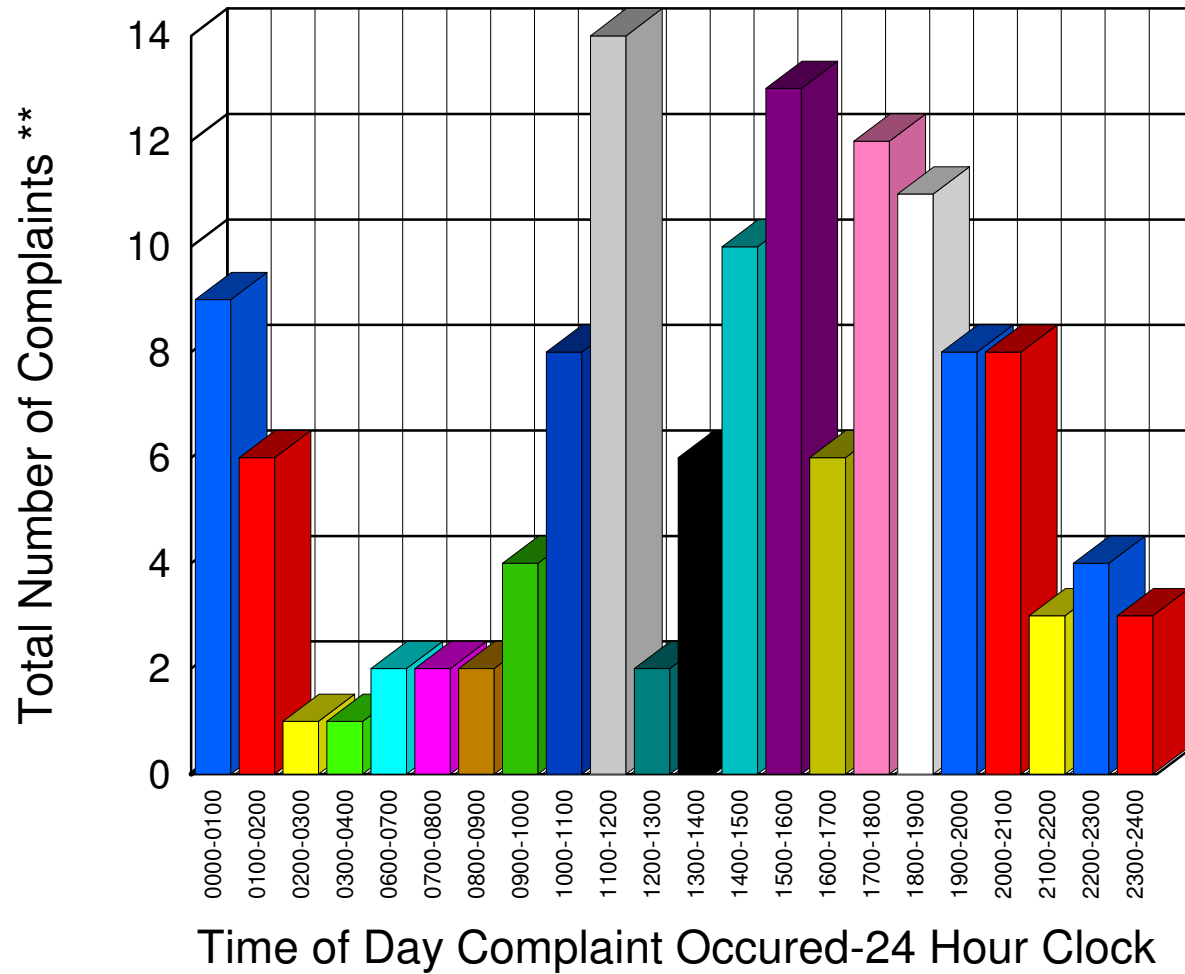


\*\* Complaints taken by Muskegon Sheriff's Office

# Muskegon County Sheriff's Office

Listing of Offense Reports--Egelston Township 02/01/2007 to 02/28/2007

0000-0100	9
0100-0200	6
0200-0300	1
0300-0400	1
0600-0700	2
0700-0800	2
0800-0900	2
0900-1000	4
1000-1100	8
1100-1200	14
1200-1300	2
1300-1400	6
1400-1500	10
1500-1600	13
1600-1700	6
1700-1800	12
1800-1900	11
1900-2000	8
2000-2100	8
2100-2200	3
2200-2300	4
2300-2400	3



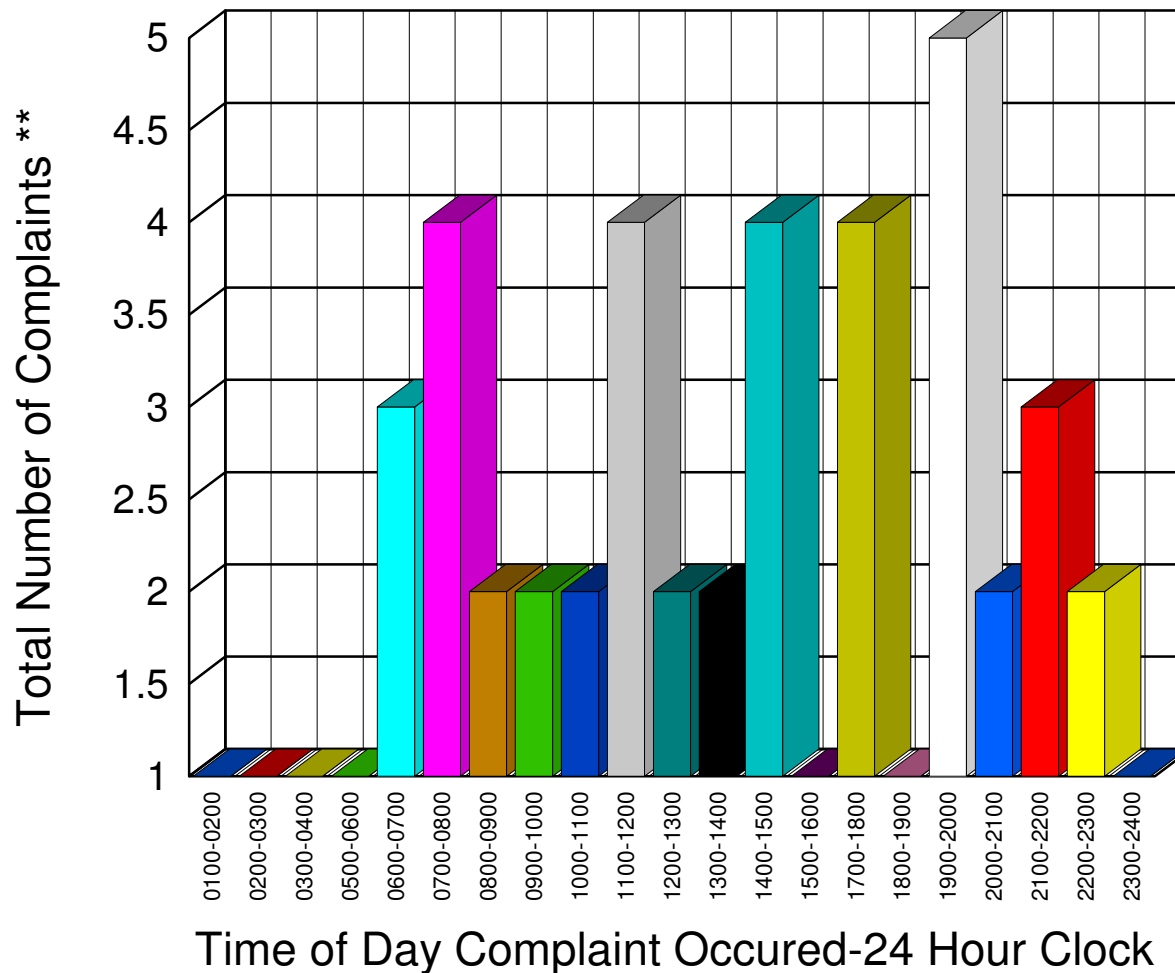
Total 135

\*\* Complaints taken by Muskegon Sheriff's Office

# Muskegon County Sheriff's Office

Listing of Offense Reports--Fruitland Township 02/02/2007 to 02/28/2007

0100-0200	1
0200-0300	1
0300-0400	1
0500-0600	1
0600-0700	3
0700-0800	4
0800-0900	2
0900-1000	2
1000-1100	2
1100-1200	4
1200-1300	2
1300-1400	2
1400-1500	4
1500-1600	1
1700-1800	4
1800-1900	1
1900-2000	5
2000-2100	2
2100-2200	3
2200-2300	2
2300-2400	1




---

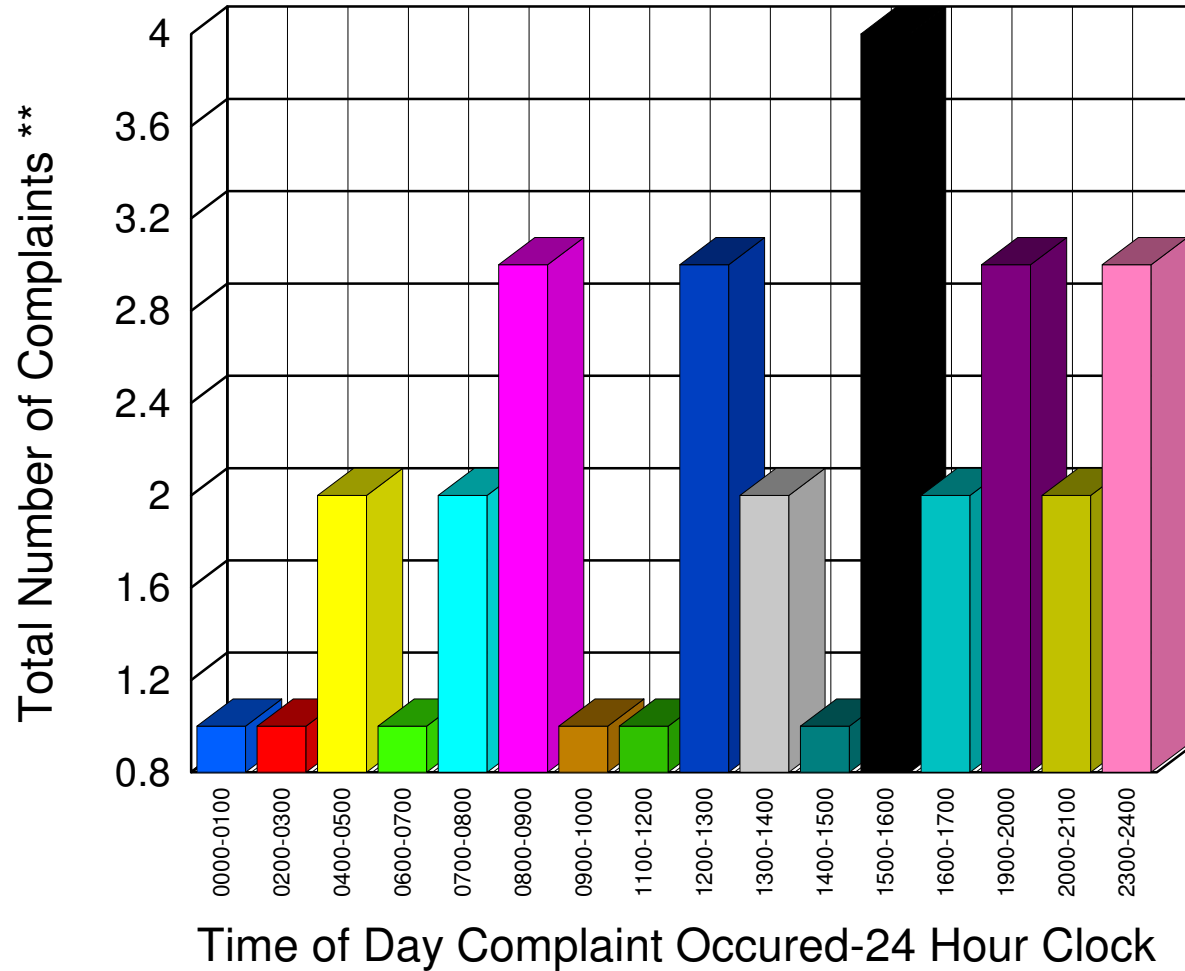
Total 48

\*\* Complaints taken by Muskegon Sheriff's Office

# Muskegon County Sheriff's Office

Listing of Offense Reports--HoltonTownship 02/01/2007 to 02/28/2007

0000-0100	1
0200-0300	1
0400-0500	2
0600-0700	1
0700-0800	2
0800-0900	3
0900-1000	1
1100-1200	1
1200-1300	3
1300-1400	2
1400-1500	1
1500-1600	4
1600-1700	2
1900-2000	3
2000-2100	2
2300-2400	3




---

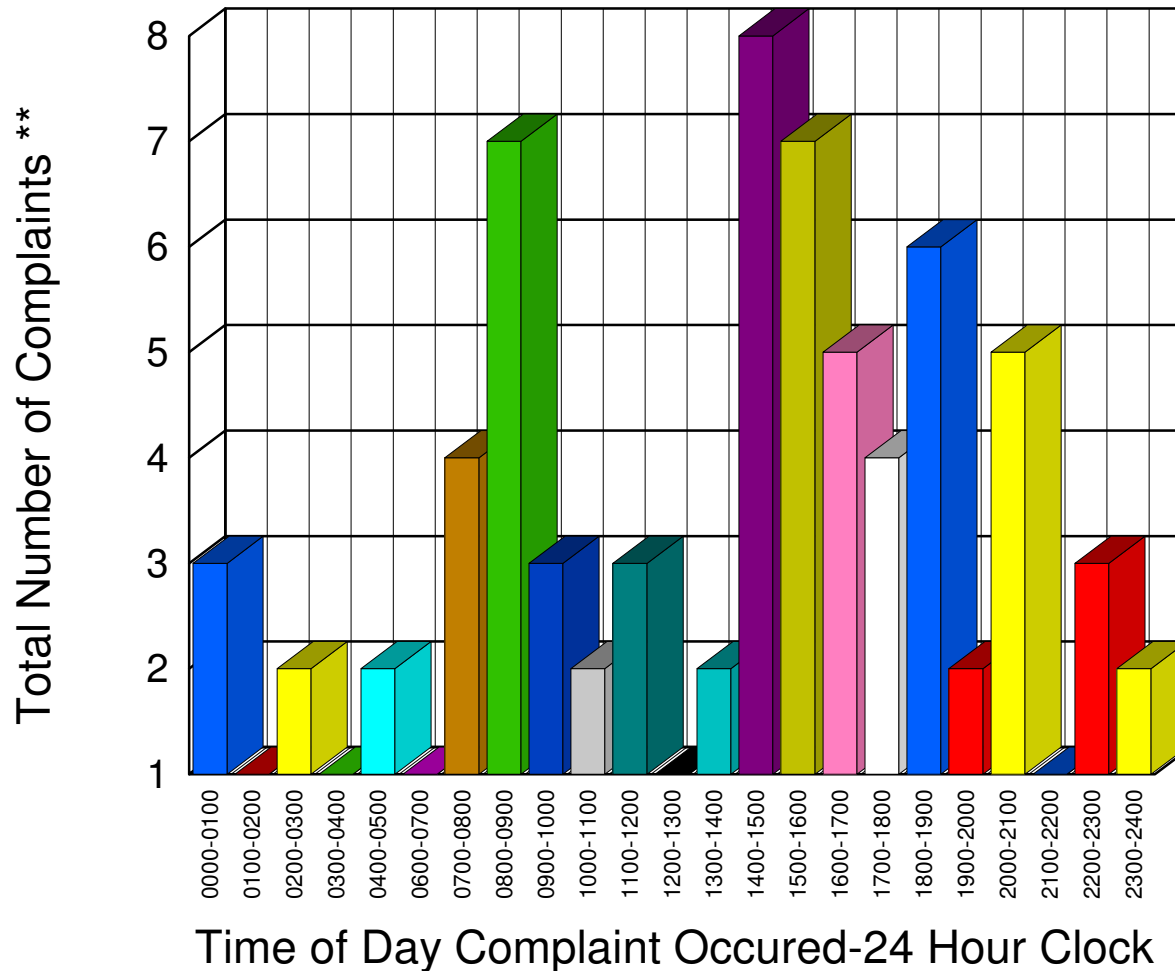
Total **32**

\*\* Complaints taken by Muskegon Sheriff's Office

# Muskegon County Sheriff's Office

Listing of Offense Reports--Laketon Township 02/02/2007 to 02/28/2007

0000-0100	3
0100-0200	1
0200-0300	2
0300-0400	1
0400-0500	2
0600-0700	1
0700-0800	4
0800-0900	7
0900-1000	3
1000-1100	2
1100-1200	3
1200-1300	1
1300-1400	2
1400-1500	8
1500-1600	7
1600-1700	5
1700-1800	4
1800-1900	6
1900-2000	2
2000-2100	5
2100-2200	1
2200-2300	3
2300-2400	2



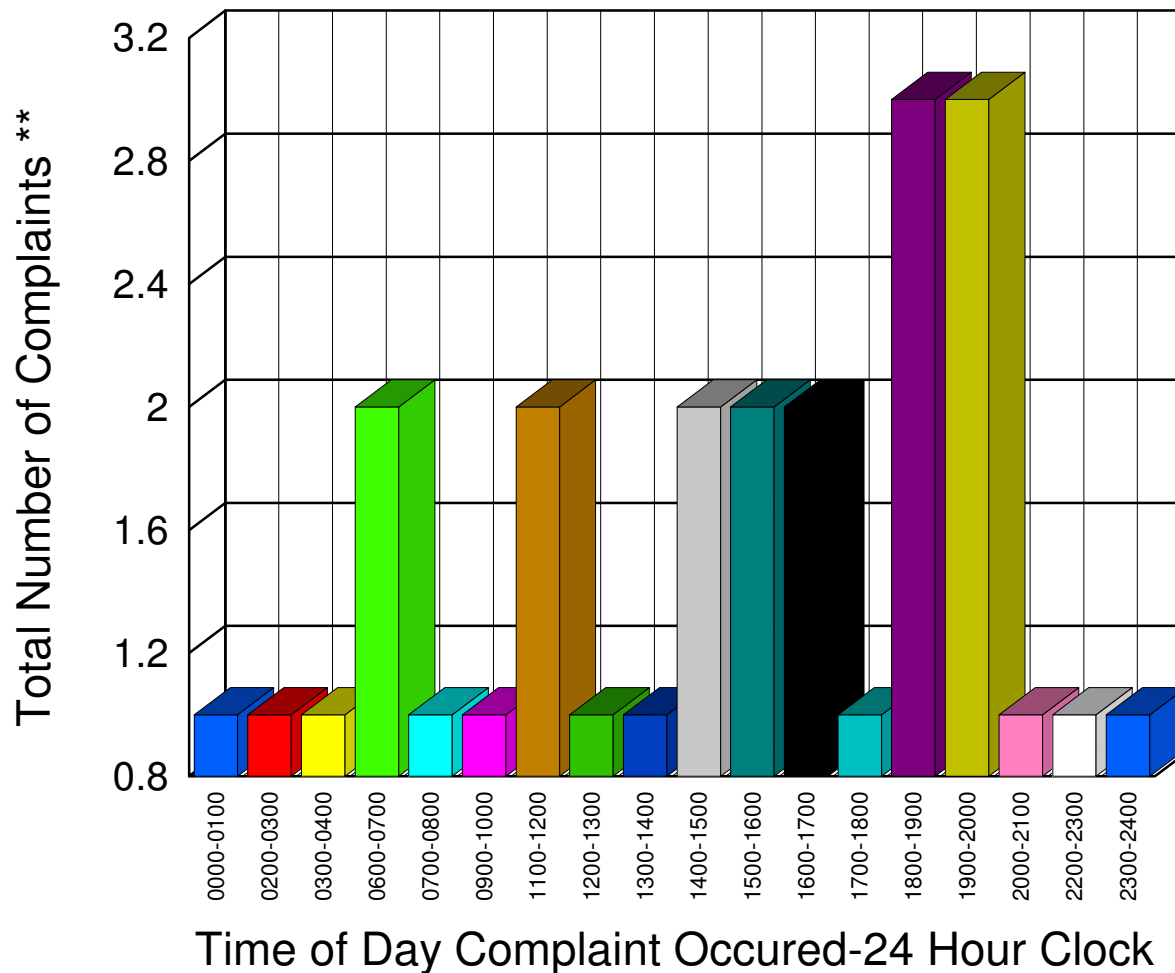
Total 75

\*\* Complaints taken by Muskegon Sheriff's Office

# Muskegon County Sheriff's Office

Listing of Offense Reports--Montague Township 02/01/2007 to 02/28/2007

0000-0100	1
0200-0300	1
0300-0400	1
0600-0700	2
0700-0800	1
0900-1000	1
1100-1200	2
1200-1300	1
1300-1400	1
1400-1500	2
1500-1600	2
1600-1700	2
1700-1800	1
1800-1900	3
1900-2000	3
2000-2100	1
2200-2300	1
2300-2400	1




---

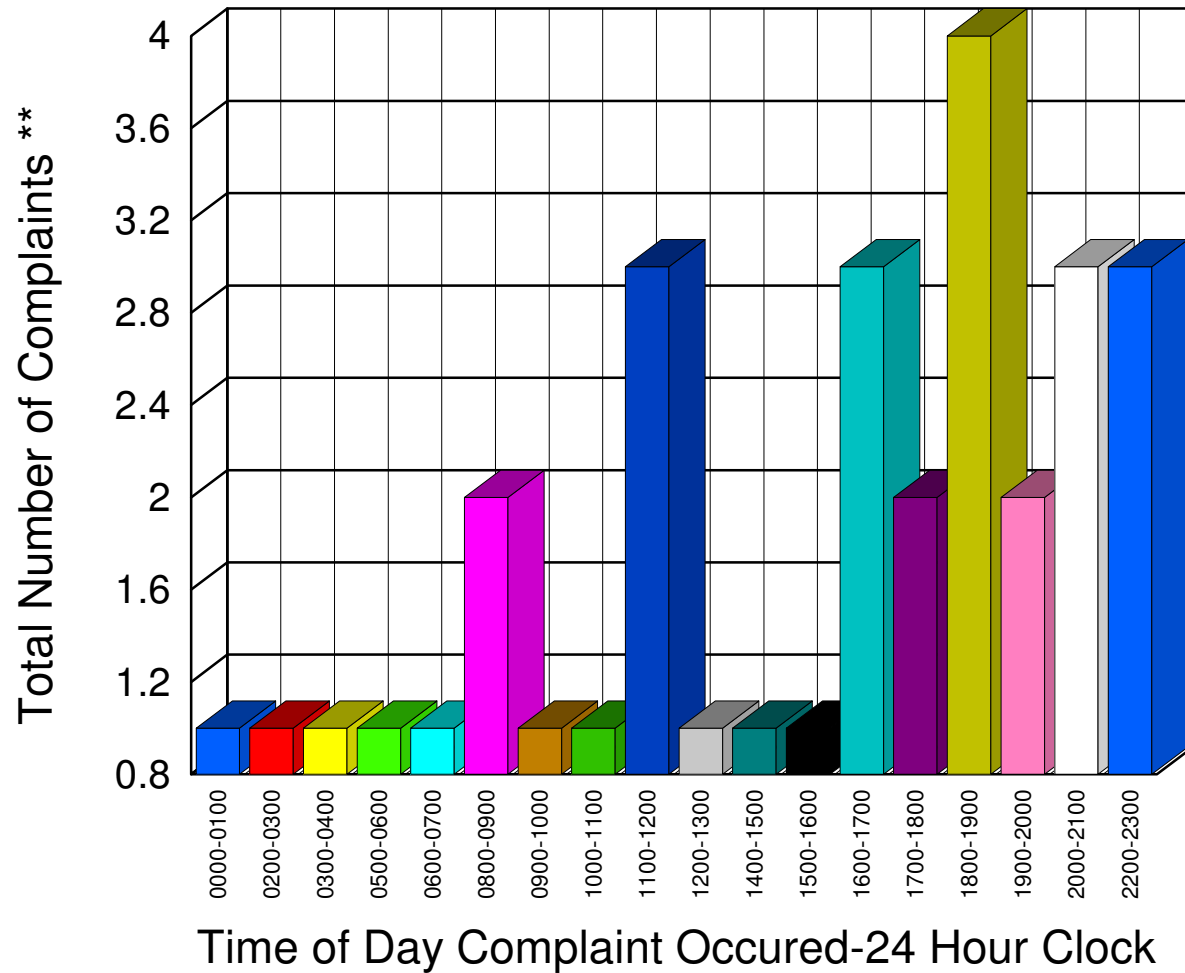
Total 27

\*\* Complaints taken by Muskegon Sheriff's Office

# Muskegon County Sheriff's Office

Listing of Offense Reports--Moorland Township 02/01/2007 to 02/28/2007

0000-0100	1
0200-0300	1
0300-0400	1
0500-0600	1
0600-0700	1
0800-0900	2
0900-1000	1
1000-1100	1
1100-1200	3
1200-1300	1
1400-1500	1
1500-1600	1
1600-1700	3
1700-1800	2
1800-1900	4
1900-2000	2
2000-2100	3
2200-2300	3




---

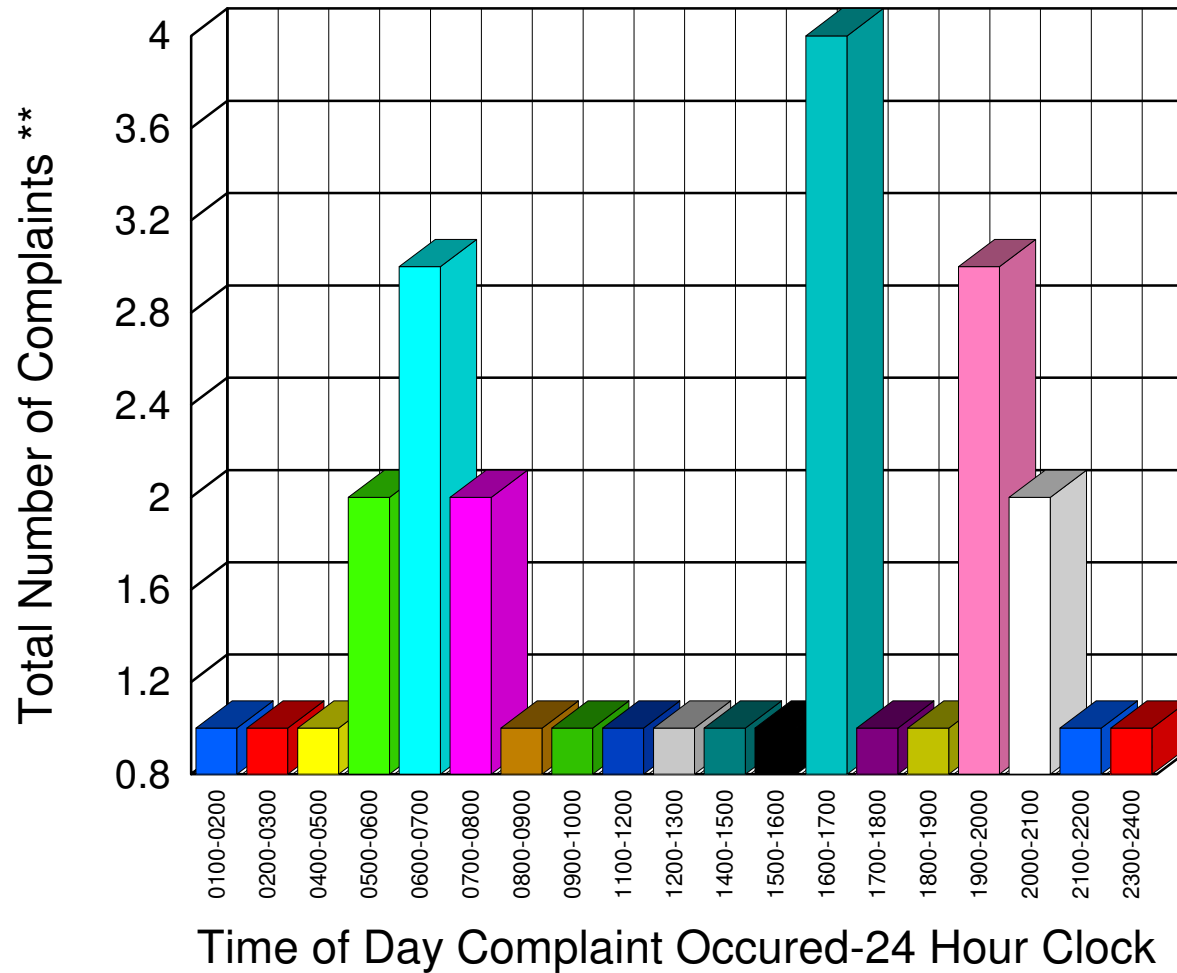
Total 32

\*\* Complaints taken by Muskegon Sheriff's Office

# Muskegon County Sheriff's Office

Listing of Offense Reports--Ravenna and Ravenna Township 02/01/2007 to 02/28/2007

0100-0200	1
0200-0300	1
0400-0500	1
0500-0600	2
0600-0700	3
0700-0800	2
0800-0900	1
0900-1000	1
1100-1200	1
1200-1300	1
1400-1500	1
1500-1600	1
1600-1700	4
1700-1800	1
1800-1900	1
1900-2000	3
2000-2100	2
2100-2200	1
2300-2400	1




---

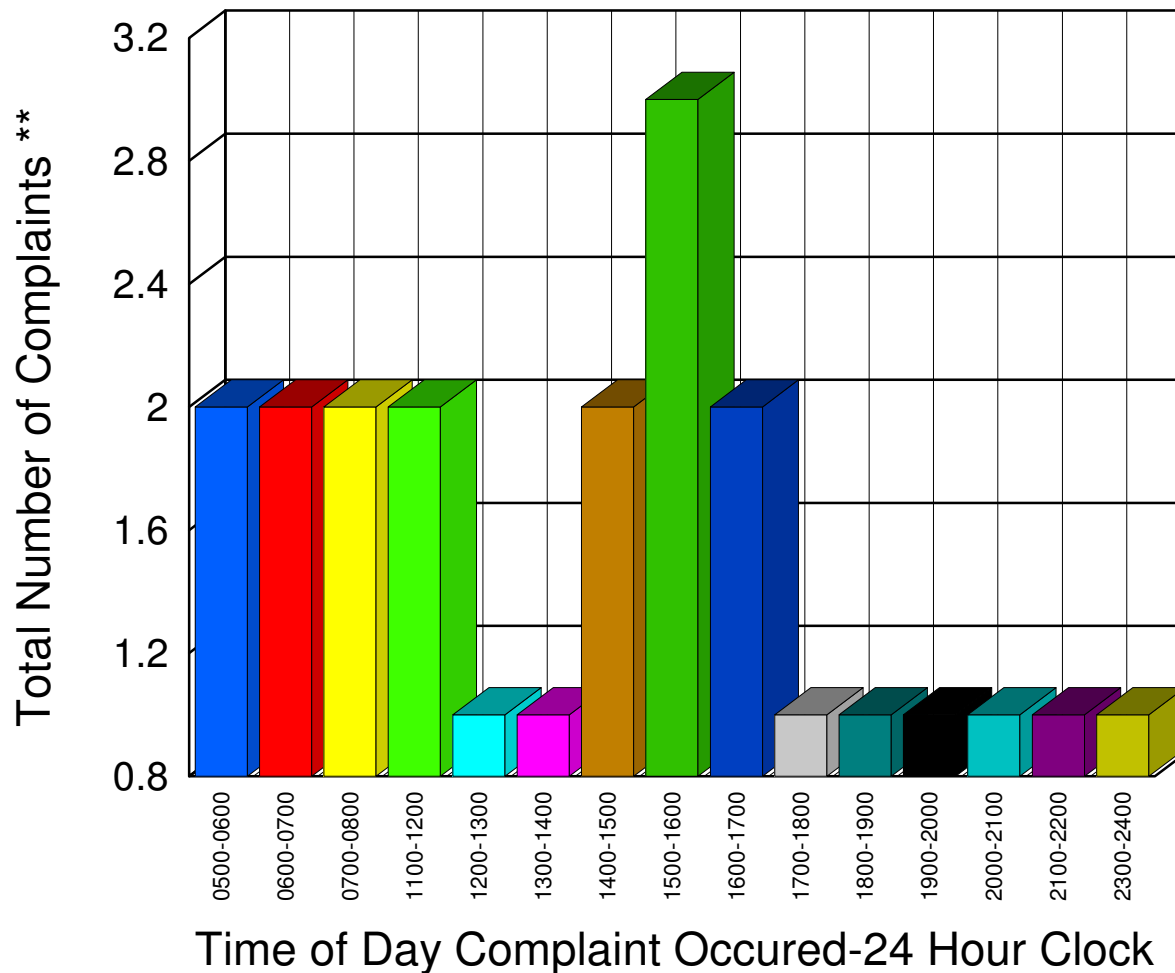
Total 29

\*\* Complaints taken by Muskegon Sheriff's Office

# Muskegon County Sheriff's Office

Listing of Offense Reports--Sullivan Township 02/01/2007 to 02/27/2007

0500-0600	2
0600-0700	2
0700-0800	2
1100-1200	2
1200-1300	1
1300-1400	1
1400-1500	2
1500-1600	3
1600-1700	2
1700-1800	1
1800-1900	1
1900-2000	1
2000-2100	1
2100-2200	1
2300-2400	1




---

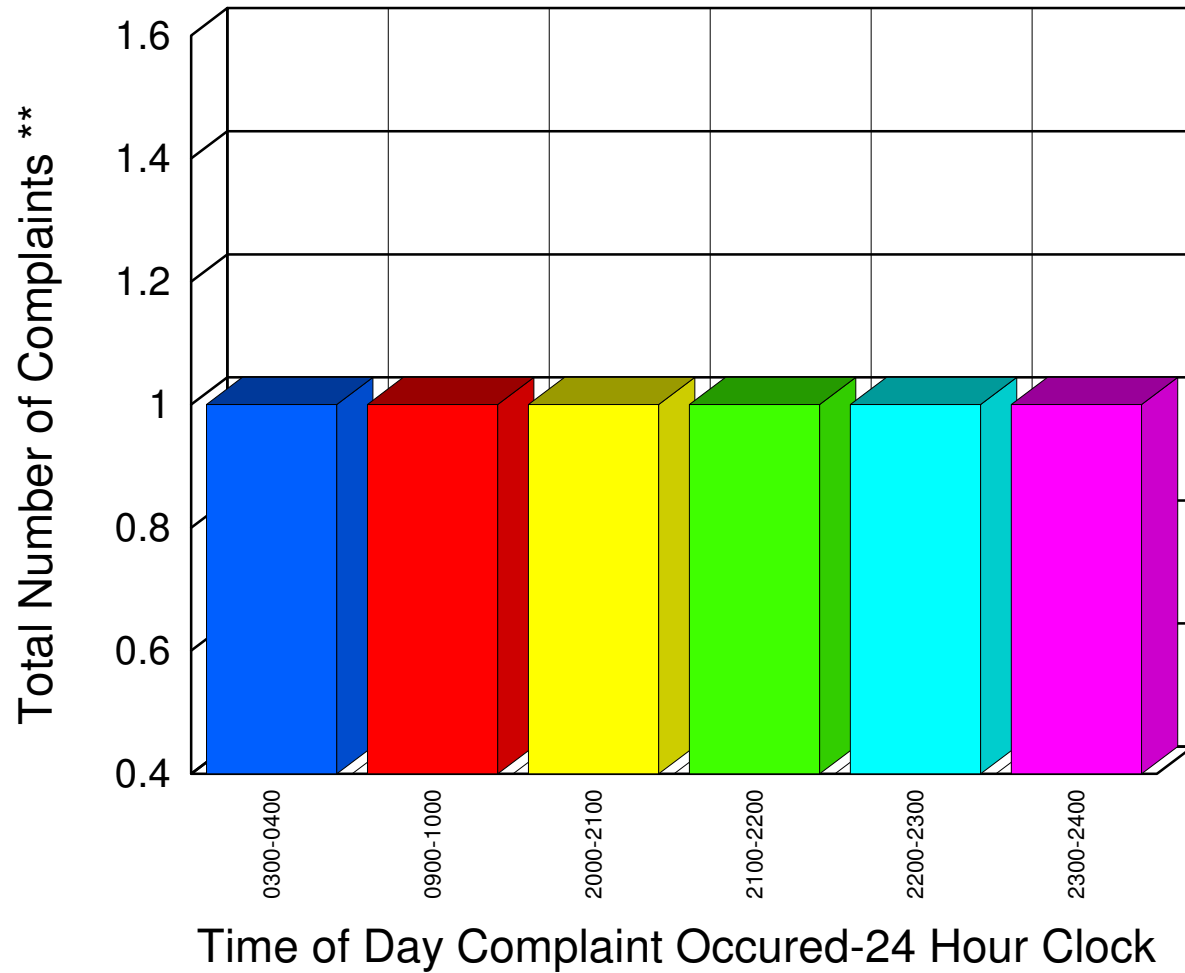
Total 23

\*\* Complaints taken by Muskegon Sheriff's Office

# Muskegon County Sheriff's Office

Listing of Offense Reports--White River Township 02/06/2007 to 02/28/2007

<u>0300-0400</u>	<u>1</u>
<u>0900-1000</u>	<u>1</u>
<u>2000-2100</u>	<u>1</u>
<u>2100-2200</u>	<u>1</u>
<u>2200-2300</u>	<u>1</u>
<u>2300-2400</u>	<u>1</u>



---

---

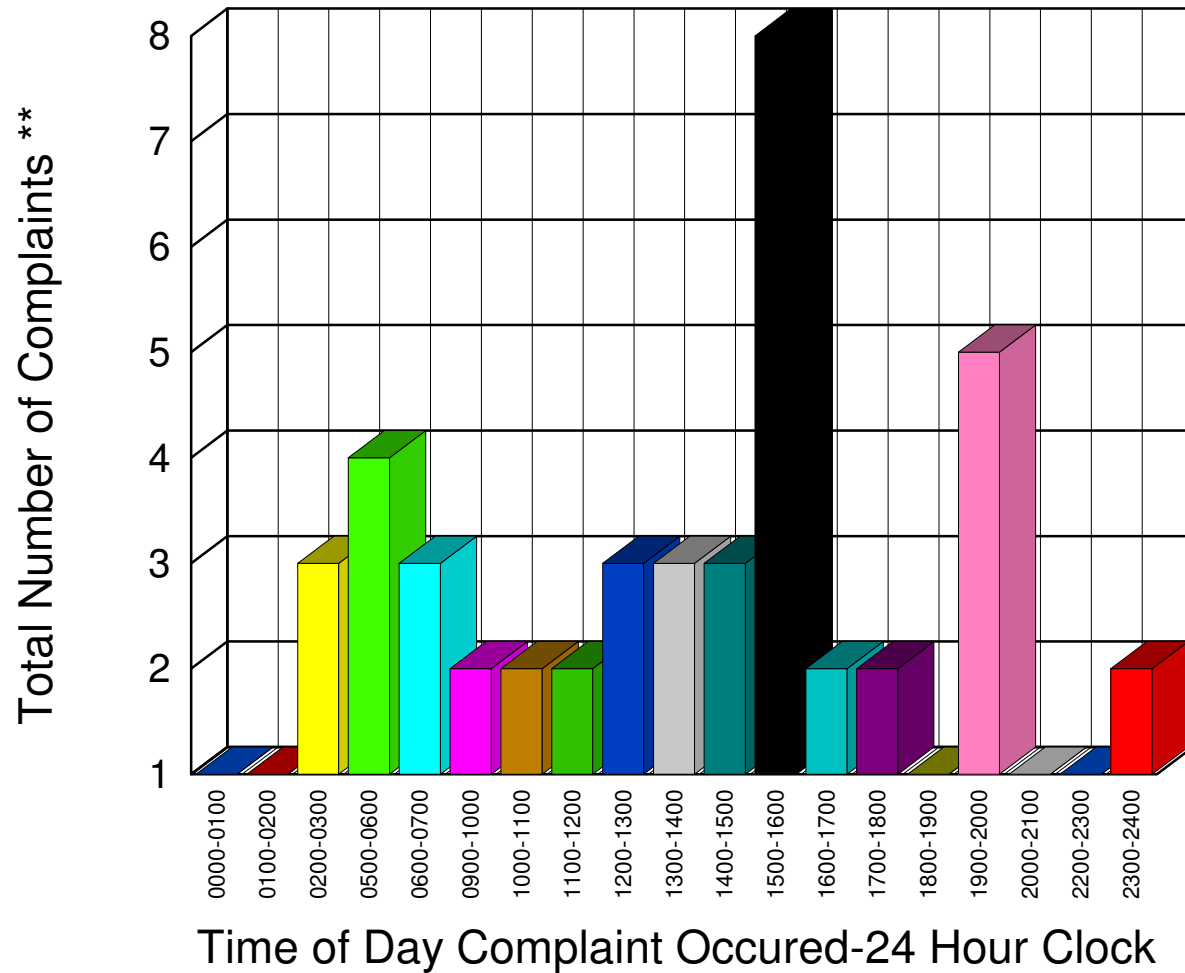
Total	6
-------	---

\*\* Complaints taken by Muskegon Sheriff's Office

# Muskegon County Sheriff's Office

Listing of Offense Reports--Whitehall Township 02/02/2007 to 02/28/2007

0000-0100	1
0100-0200	1
0200-0300	3
0500-0600	4
0600-0700	3
0900-1000	2
1000-1100	2
1100-1200	2
1200-1300	3
1300-1400	3
1400-1500	3
1500-1600	8
1600-1700	2
1700-1800	2
1800-1900	1
1900-2000	5
2000-2100	1
2200-2300	1
2300-2400	2




---

Total **49**

\*\* Complaints taken by Muskegon Sheriff's Office