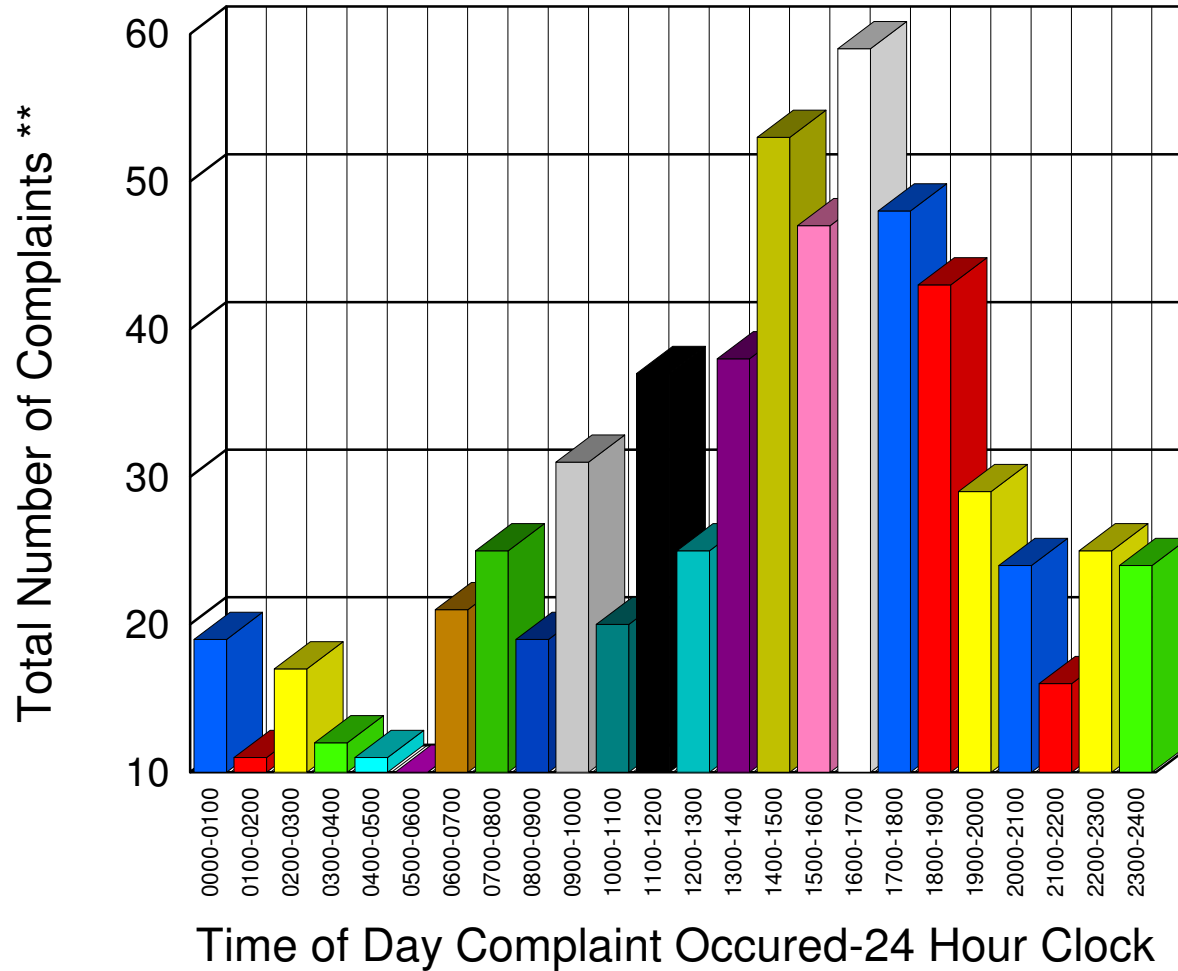


Muskegon County Sheriff's Office

Listing of Offense Reports-- 02/01/2008 00:00:00 to 02/29/2008 22:30:00

| | |
|-----------|----|
| 0000-0100 | 19 |
| 0100-0200 | 11 |
| 0200-0300 | 17 |
| 0300-0400 | 12 |
| 0400-0500 | 11 |
| 0500-0600 | 10 |
| 0600-0700 | 21 |
| 0700-0800 | 25 |
| 0800-0900 | 19 |
| 0900-1000 | 31 |
| 1000-1100 | 20 |
| 1100-1200 | 37 |
| 1200-1300 | 25 |
| 1300-1400 | 38 |
| 1400-1500 | 53 |
| 1500-1600 | 47 |
| 1600-1700 | 59 |
| 1700-1800 | 48 |
| 1800-1900 | 43 |
| 1900-2000 | 29 |
| 2000-2100 | 24 |
| 2100-2200 | 16 |
| 2200-2300 | 25 |
| 2300-2400 | 24 |

Total 664

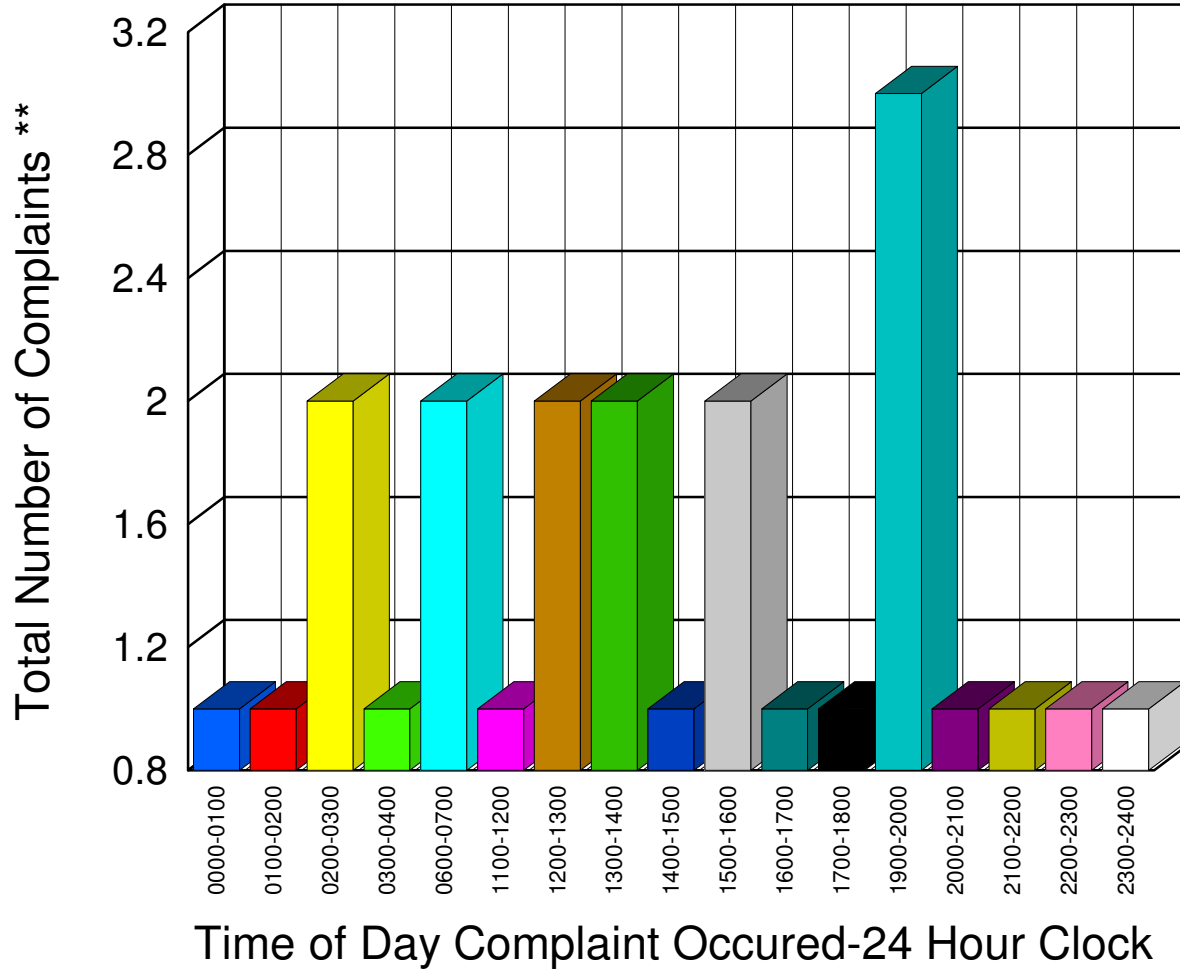


** Complaints taken by Muskegon Sheriff's Office

Muskegon County Sheriff's Office

Listing of Offense Reports - Blue Lake Township - 02/01/2008 03:54:59 to 02/29/2008 17:37:00

| | |
|-----------|---|
| 0000-0100 | 1 |
| 0100-0200 | 1 |
| 0200-0300 | 2 |
| 0300-0400 | 1 |
| 0600-0700 | 2 |
| 1100-1200 | 1 |
| 1200-1300 | 2 |
| 1300-1400 | 2 |
| 1400-1500 | 1 |
| 1500-1600 | 2 |
| 1600-1700 | 1 |
| 1700-1800 | 1 |
| 1900-2000 | 3 |
| 2000-2100 | 1 |
| 2100-2200 | 1 |
| 2200-2300 | 1 |
| 2300-2400 | 1 |



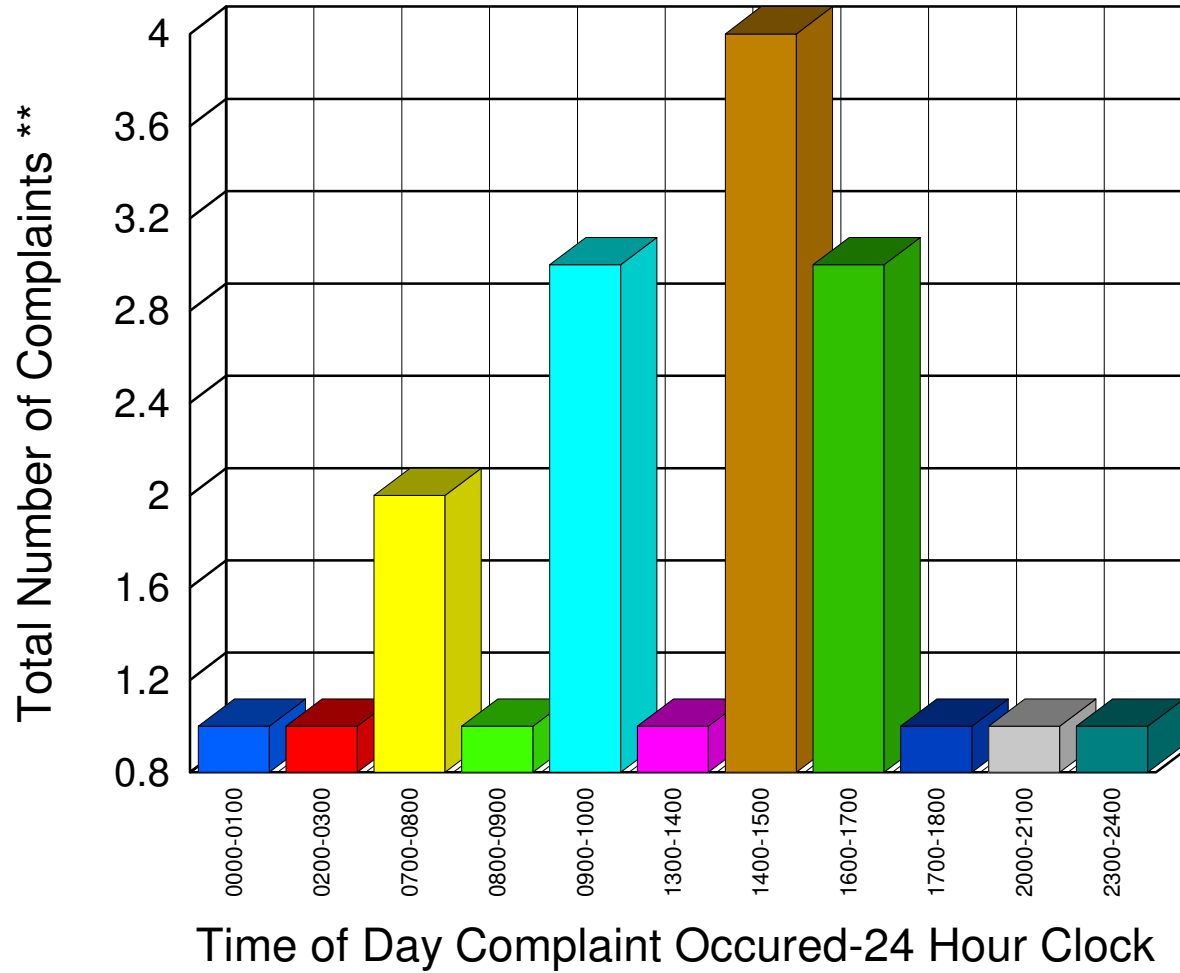
Total 24

** Complaints taken by Muskegon Sheriff's Office

Muskegon County Sheriff's Office

Listing of Offense Reports - Casnovia Village and Township - 02/01/2008 07:02:00 to 02/29/2008 15:00:00

| | |
|-----------|---|
| 0000-0100 | 1 |
| 0200-0300 | 1 |
| 0700-0800 | 2 |
| 0800-0900 | 1 |
| 0900-1000 | 3 |
| 1300-1400 | 1 |
| 1400-1500 | 4 |
| 1600-1700 | 3 |
| 1700-1800 | 1 |
| 2000-2100 | 1 |
| 2300-2400 | 1 |



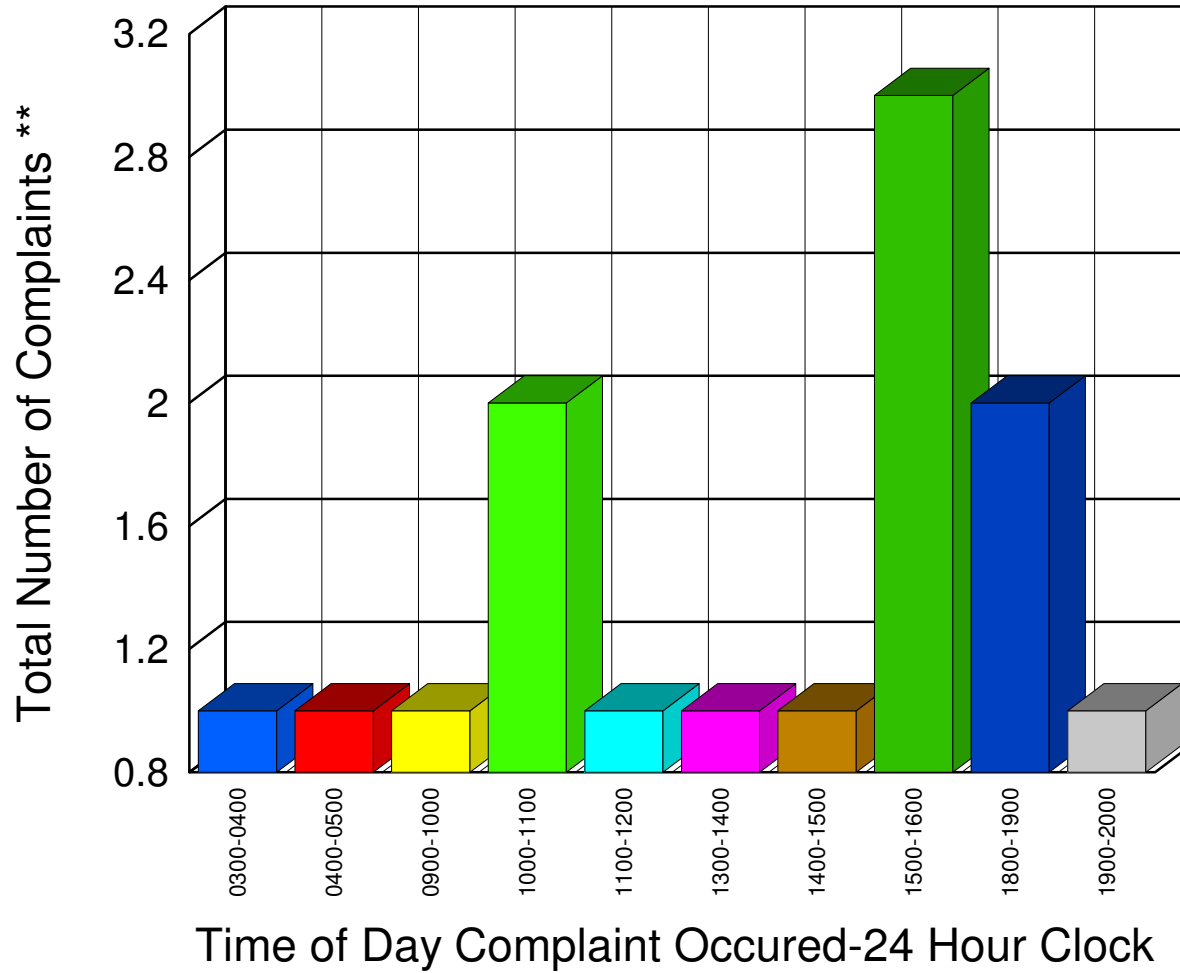
Total **19**

** Complaints taken by Muskegon Sheriff's Office

Muskegon County Sheriff's Office

Listing of Offense Reports - Cedar Creek Township - 02/02/2008 18:27:59 to 02/27/2008 04:19:59

| | |
|-----------|---|
| 0300-0400 | 1 |
| 0400-0500 | 1 |
| 0900-1000 | 1 |
| 1000-1100 | 2 |
| 1100-1200 | 1 |
| 1300-1400 | 1 |
| 1400-1500 | 1 |
| 1500-1600 | 3 |
| 1800-1900 | 2 |
| 1900-2000 | 1 |



Total 14

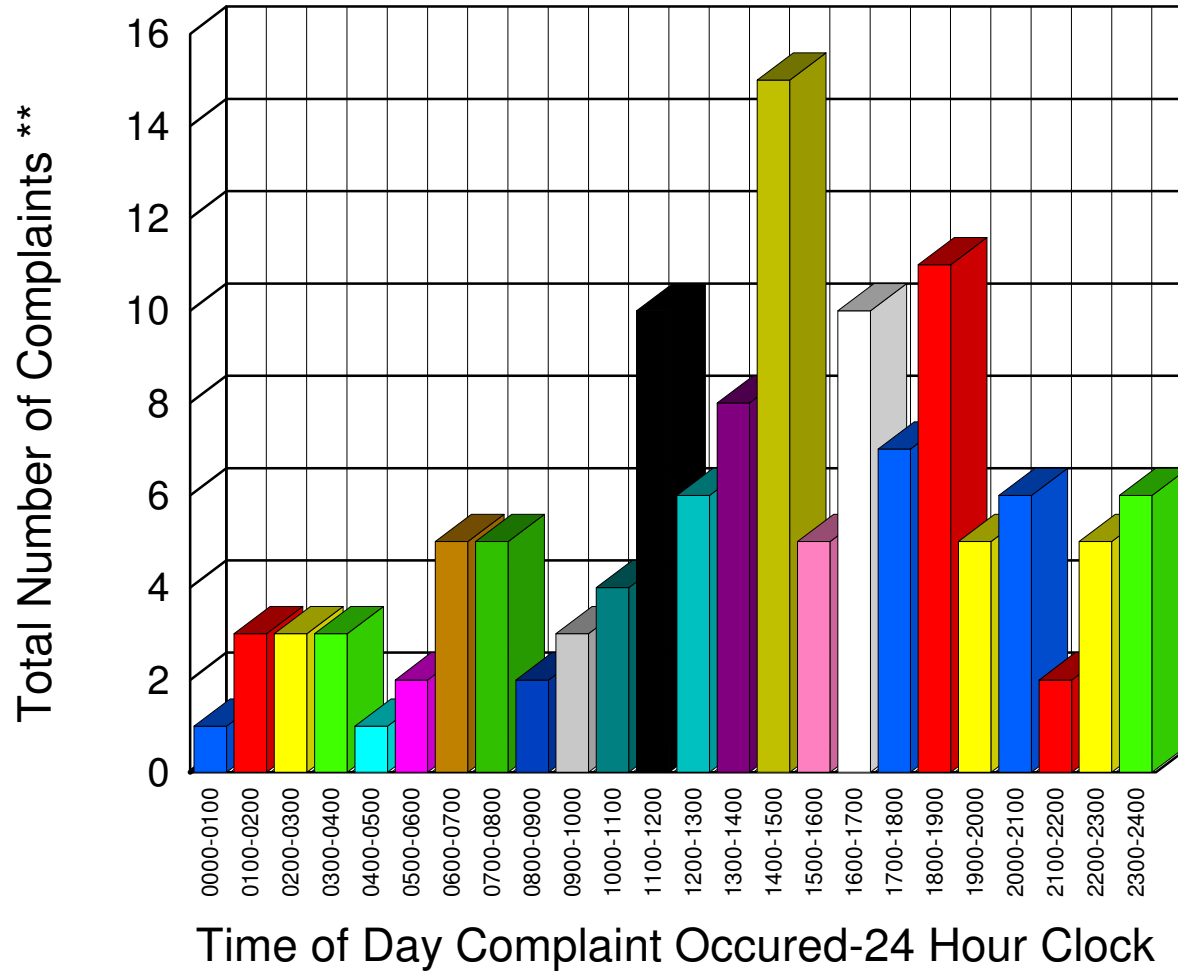
** Complaints taken by Muskegon Sheriff's Office

Muskegon County Sheriff's Office

Listing of Offense Reports - Lakewood Club and Dalton Township - 02/01/2008 01:55:59 to 02/29/2008 18:30:59

| | |
|-----------|----|
| 0000-0100 | 1 |
| 0100-0200 | 3 |
| 0200-0300 | 3 |
| 0300-0400 | 3 |
| 0400-0500 | 1 |
| 0500-0600 | 2 |
| 0600-0700 | 5 |
| 0700-0800 | 5 |
| 0800-0900 | 2 |
| 0900-1000 | 3 |
| 1000-1100 | 4 |
| 1100-1200 | 10 |
| 1200-1300 | 6 |
| 1300-1400 | 8 |
| 1400-1500 | 15 |
| 1500-1600 | 5 |
| 1600-1700 | 10 |
| 1700-1800 | 7 |
| 1800-1900 | 11 |
| 1900-2000 | 5 |
| 2000-2100 | 6 |
| 2100-2200 | 2 |
| 2200-2300 | 5 |
| 2300-2400 | 6 |

Total **128**



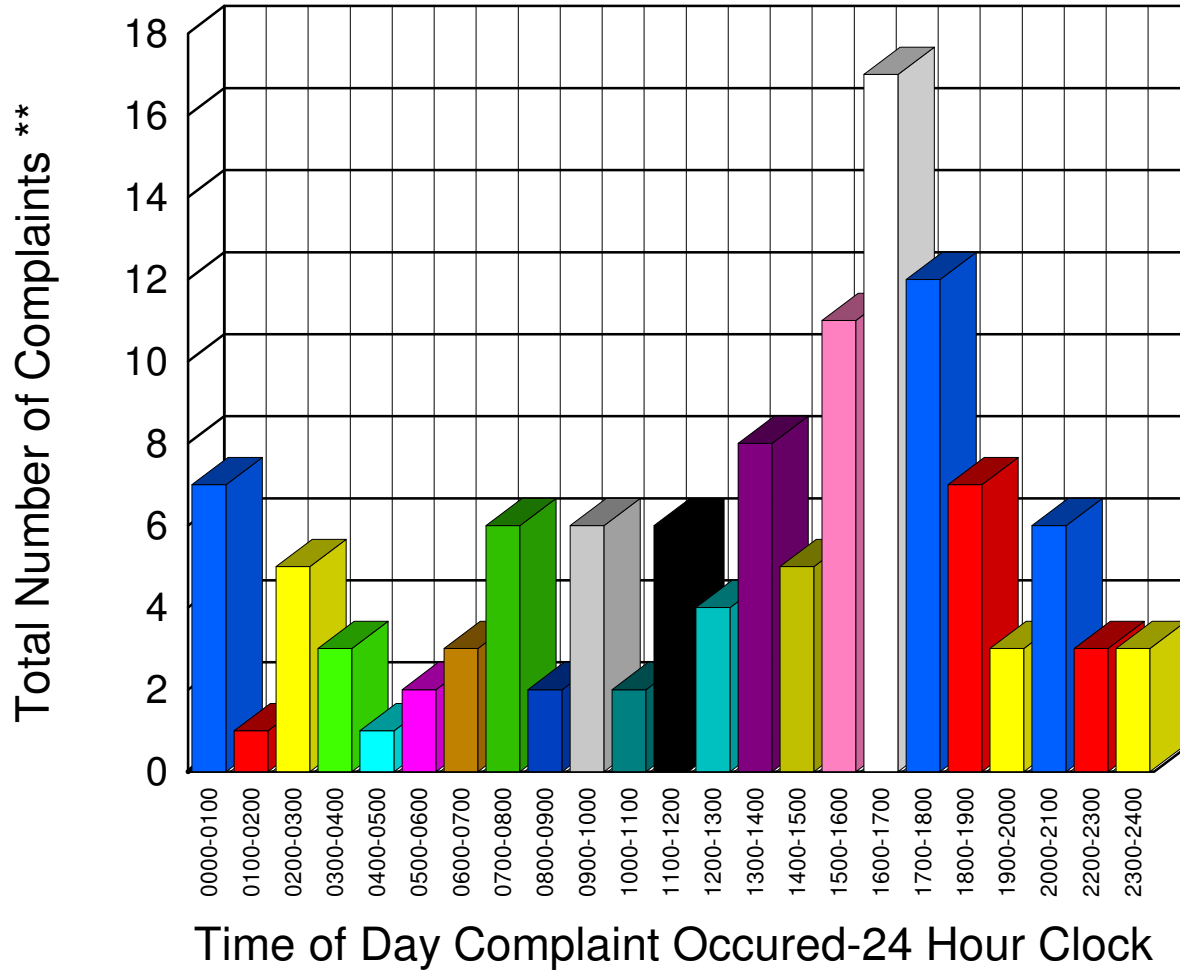
** Complaints taken by Muskegon Sheriff's Office

Muskegon County Sheriff's Office

Listing of Offense Reports - Egelston Township - 02/01/2008 12:00:00 to 02/29/2008 20:40:52

| | |
|-----------|----|
| 0000-0100 | 7 |
| 0100-0200 | 1 |
| 0200-0300 | 5 |
| 0300-0400 | 3 |
| 0400-0500 | 1 |
| 0500-0600 | 2 |
| 0600-0700 | 3 |
| 0700-0800 | 6 |
| 0800-0900 | 2 |
| 0900-1000 | 6 |
| 1000-1100 | 2 |
| 1100-1200 | 6 |
| 1200-1300 | 4 |
| 1300-1400 | 8 |
| 1400-1500 | 5 |
| 1500-1600 | 11 |
| 1600-1700 | 17 |
| 1700-1800 | 12 |
| 1800-1900 | 7 |
| 1900-2000 | 3 |
| 2000-2100 | 6 |
| 2200-2300 | 3 |
| 2300-2400 | 3 |

Total 123

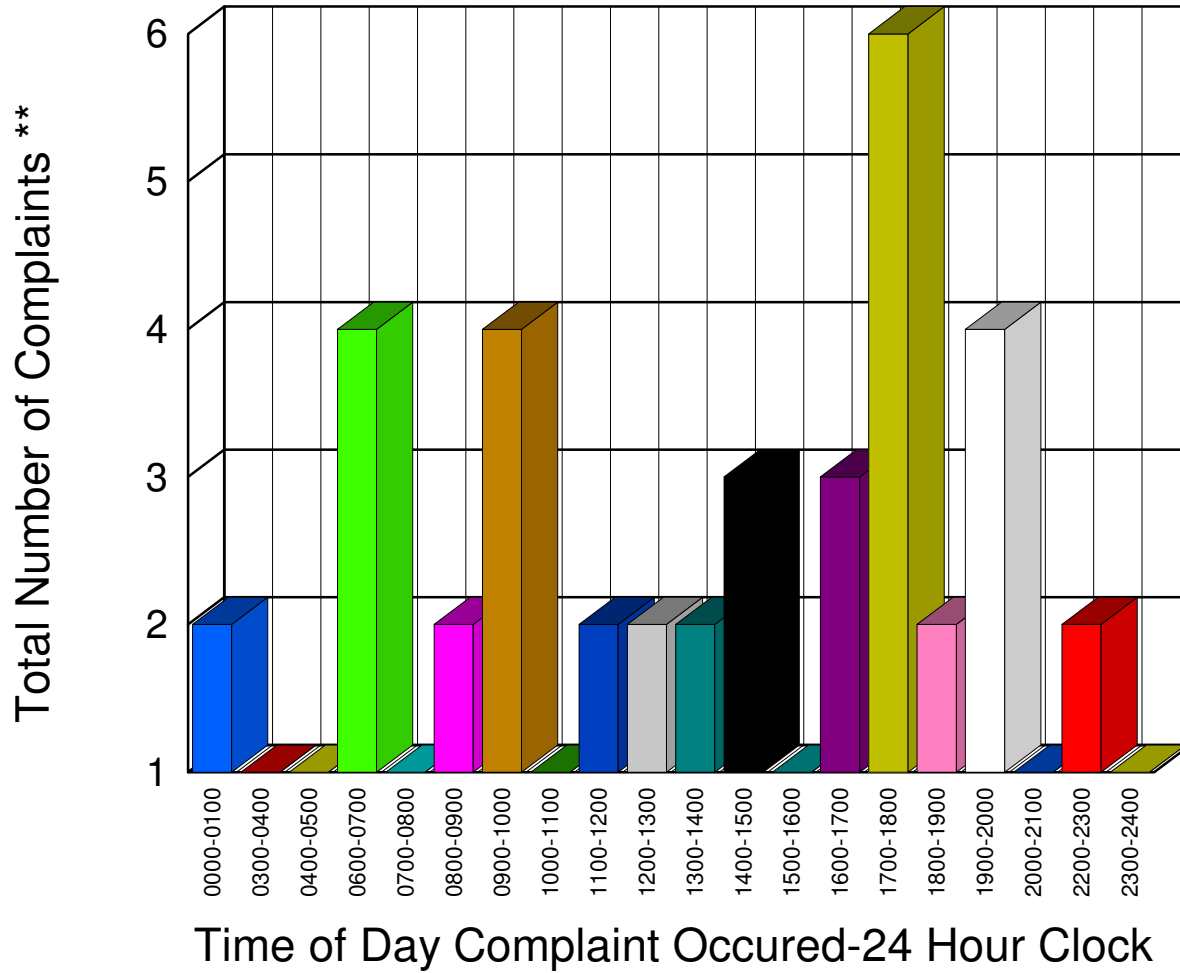


** Complaints taken by Muskegon Sheriff's Office

Muskegon County Sheriff's Office

Listing of Offense Reports - Fruitland Township - 02/01/2008 03:30:59 to 02/29/2008 13:53:42

| | |
|-----------|---|
| 0000-0100 | 2 |
| 0300-0400 | 1 |
| 0400-0500 | 1 |
| 0600-0700 | 4 |
| 0700-0800 | 1 |
| 0800-0900 | 2 |
| 0900-1000 | 4 |
| 1000-1100 | 1 |
| 1100-1200 | 2 |
| 1200-1300 | 2 |
| 1300-1400 | 2 |
| 1400-1500 | 3 |
| 1500-1600 | 1 |
| 1600-1700 | 3 |
| 1700-1800 | 6 |
| 1800-1900 | 2 |
| 1900-2000 | 4 |
| 2000-2100 | 1 |
| 2200-2300 | 2 |
| 2300-2400 | 1 |



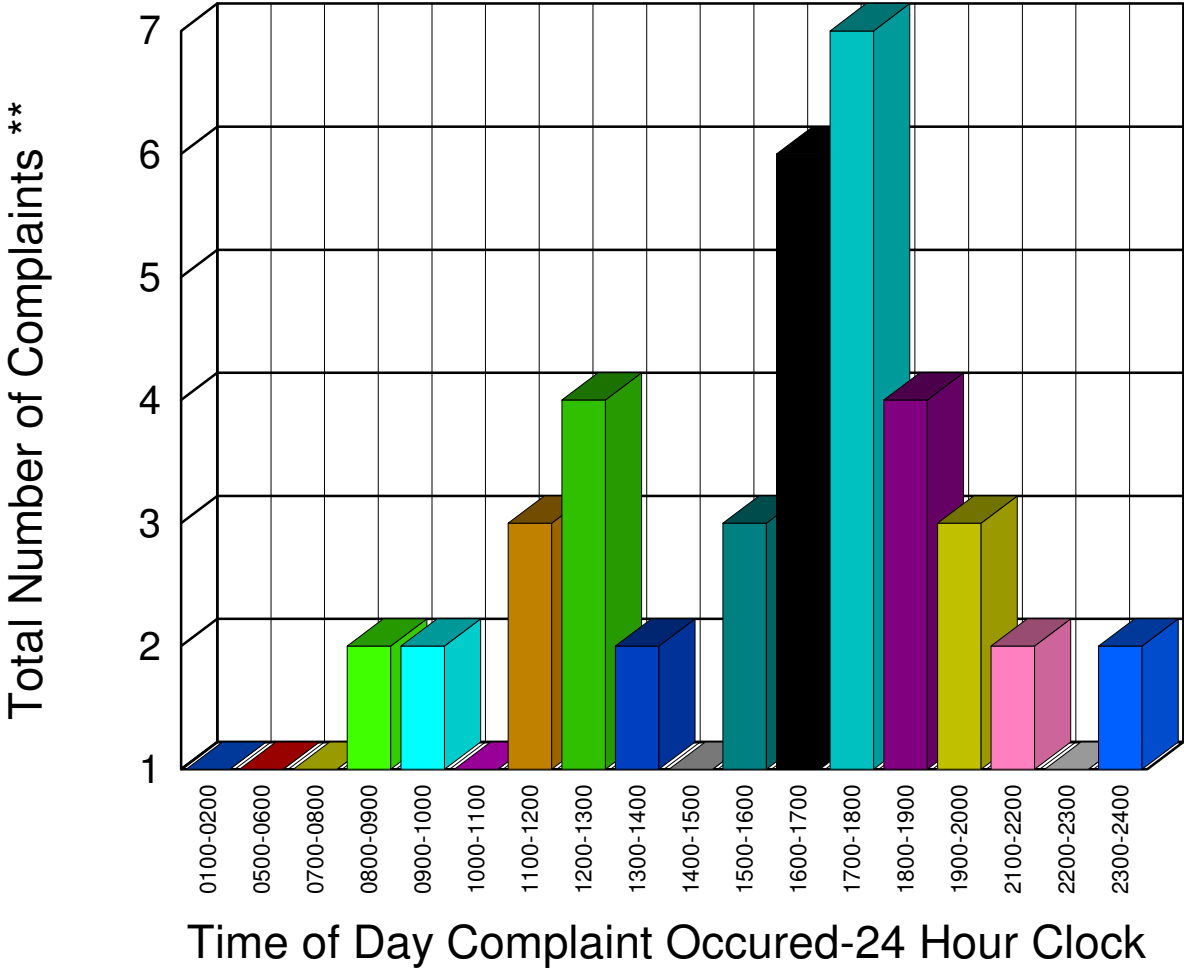
Total 45

** Complaints taken by Muskegon Sheriff's Office

Muskegon County Sheriff's Office

Listing of Offense Reports - Holton Township - 02/01/2008 08:54:00 to 02/29/2008 18:18:59

| | |
|-----------|---|
| 0100-0200 | 1 |
| 0500-0600 | 1 |
| 0700-0800 | 1 |
| 0800-0900 | 2 |
| 0900-1000 | 2 |
| 1000-1100 | 1 |
| 1100-1200 | 3 |
| 1200-1300 | 4 |
| 1300-1400 | 2 |
| 1400-1500 | 1 |
| 1500-1600 | 3 |
| 1600-1700 | 6 |
| 1700-1800 | 7 |
| 1800-1900 | 4 |
| 1900-2000 | 3 |
| 2100-2200 | 2 |
| 2200-2300 | 1 |
| 2300-2400 | 2 |



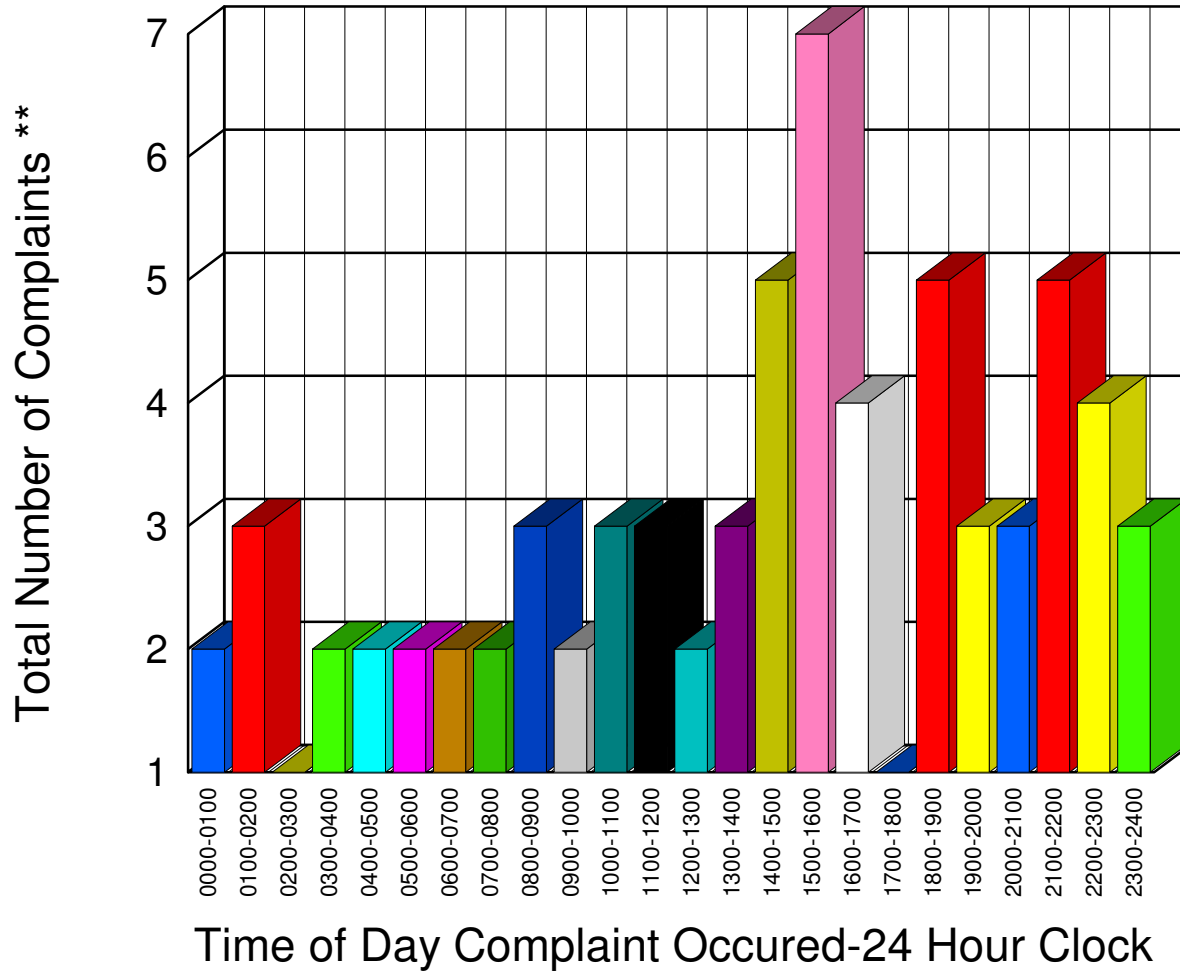
Total 46

** Complaints taken by Muskegon Sheriff's Office

Muskegon County Sheriff's Office

Listing of Offense Reports - Laketon Township - 02/01/2008 18:05:00 to 02/29/2008 22:30:00

| | |
|-----------|---|
| 0000-0100 | 2 |
| 0100-0200 | 3 |
| 0200-0300 | 1 |
| 0300-0400 | 2 |
| 0400-0500 | 2 |
| 0500-0600 | 2 |
| 0600-0700 | 2 |
| 0700-0800 | 2 |
| 0800-0900 | 3 |
| 0900-1000 | 2 |
| 1000-1100 | 3 |
| 1100-1200 | 3 |
| 1200-1300 | 2 |
| 1300-1400 | 3 |
| 1400-1500 | 5 |
| 1500-1600 | 7 |
| 1600-1700 | 4 |
| 1700-1800 | 1 |
| 1800-1900 | 5 |
| 1900-2000 | 3 |
| 2000-2100 | 3 |
| 2100-2200 | 5 |
| 2200-2300 | 4 |
| 2300-2400 | 3 |



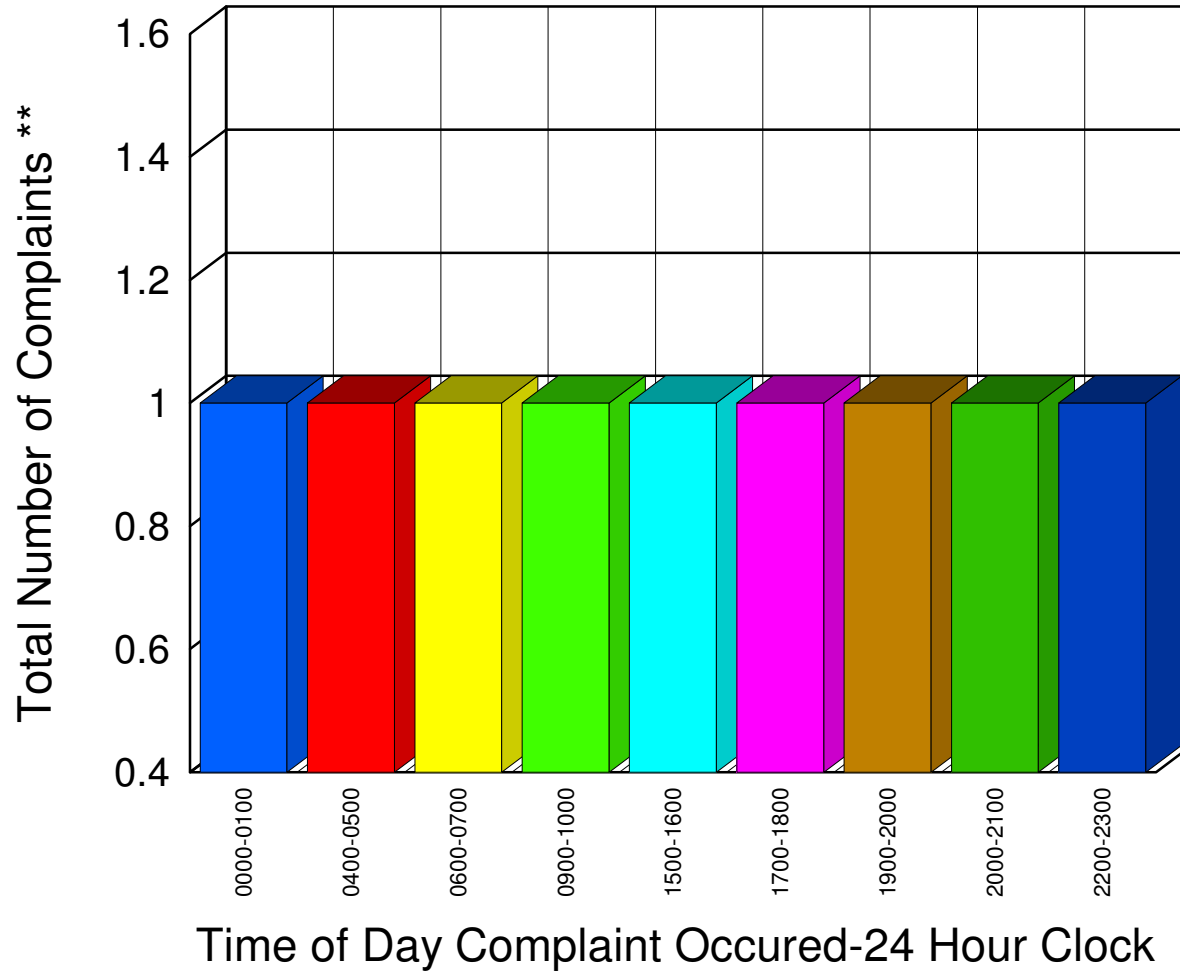
Total 72

** Complaints taken by Muskegon Sheriff's Office

Muskegon County Sheriff's Office

Listing of Offense Reports - Montague Township - 02/06/2008 06:05:00 to 02/25/2008 04:44:59

| | |
|------------------|----------|
| <u>0000-0100</u> | <u>1</u> |
| <u>0400-0500</u> | <u>1</u> |
| <u>0600-0700</u> | <u>1</u> |
| <u>0900-1000</u> | <u>1</u> |
| <u>1500-1600</u> | <u>1</u> |
| <u>1700-1800</u> | <u>1</u> |
| <u>1900-2000</u> | <u>1</u> |
| <u>2000-2100</u> | <u>1</u> |
| <u>2200-2300</u> | <u>1</u> |



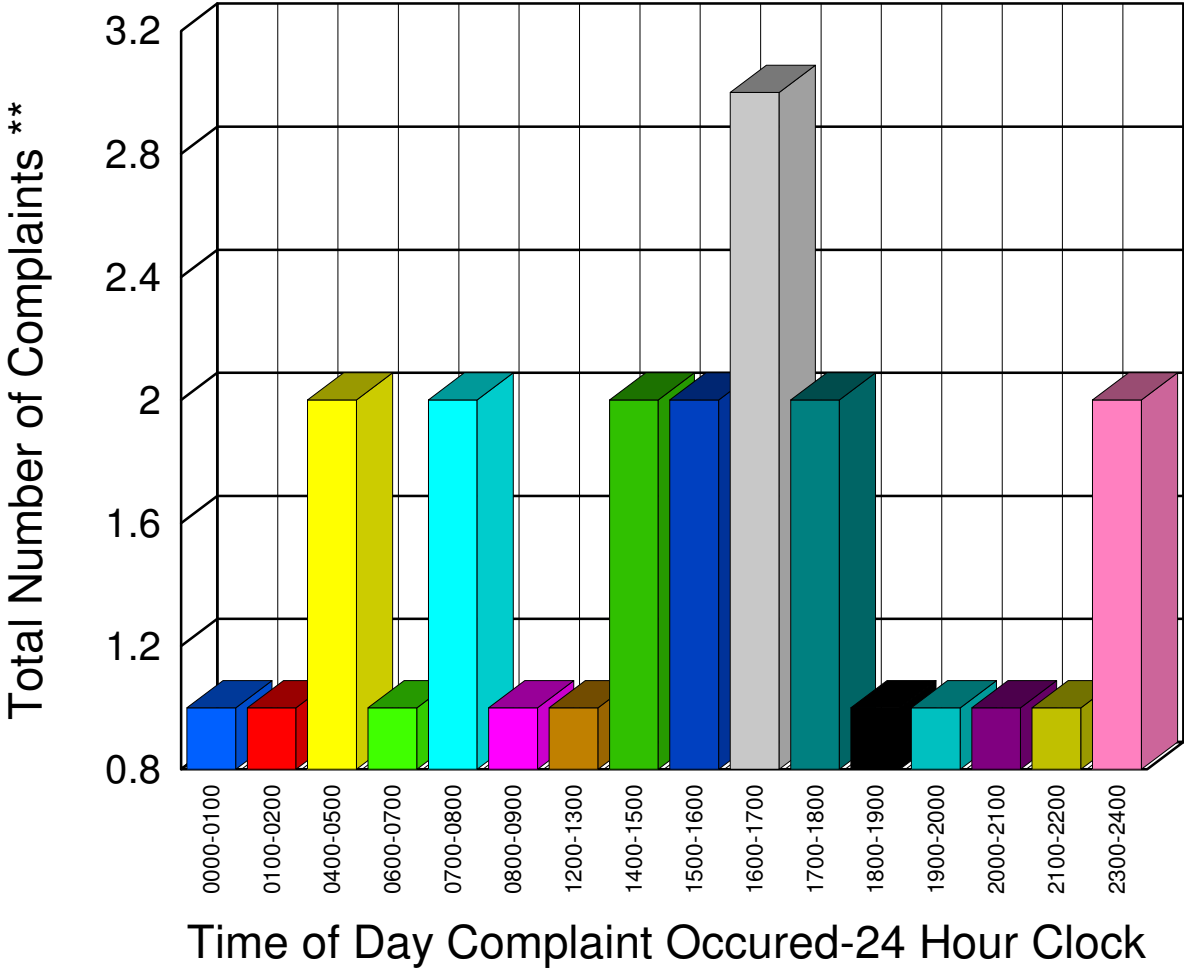
| | |
|-------|---|
| Total | 9 |
|-------|---|

** Complaints taken by Muskegon Sheriff's Office

Muskegon County Sheriff's Office

Listing of Offense Reports - Moorland Township - 02/01/2008 16:54:59 to 02/28/2008 23:29:59

| | |
|-----------|---|
| 0000-0100 | 1 |
| 0100-0200 | 1 |
| 0400-0500 | 2 |
| 0600-0700 | 1 |
| 0700-0800 | 2 |
| 0800-0900 | 1 |
| 1200-1300 | 1 |
| 1400-1500 | 2 |
| 1500-1600 | 2 |
| 1600-1700 | 3 |
| 1700-1800 | 2 |
| 1800-1900 | 1 |
| 1900-2000 | 1 |
| 2000-2100 | 1 |
| 2100-2200 | 1 |
| 2300-2400 | 2 |



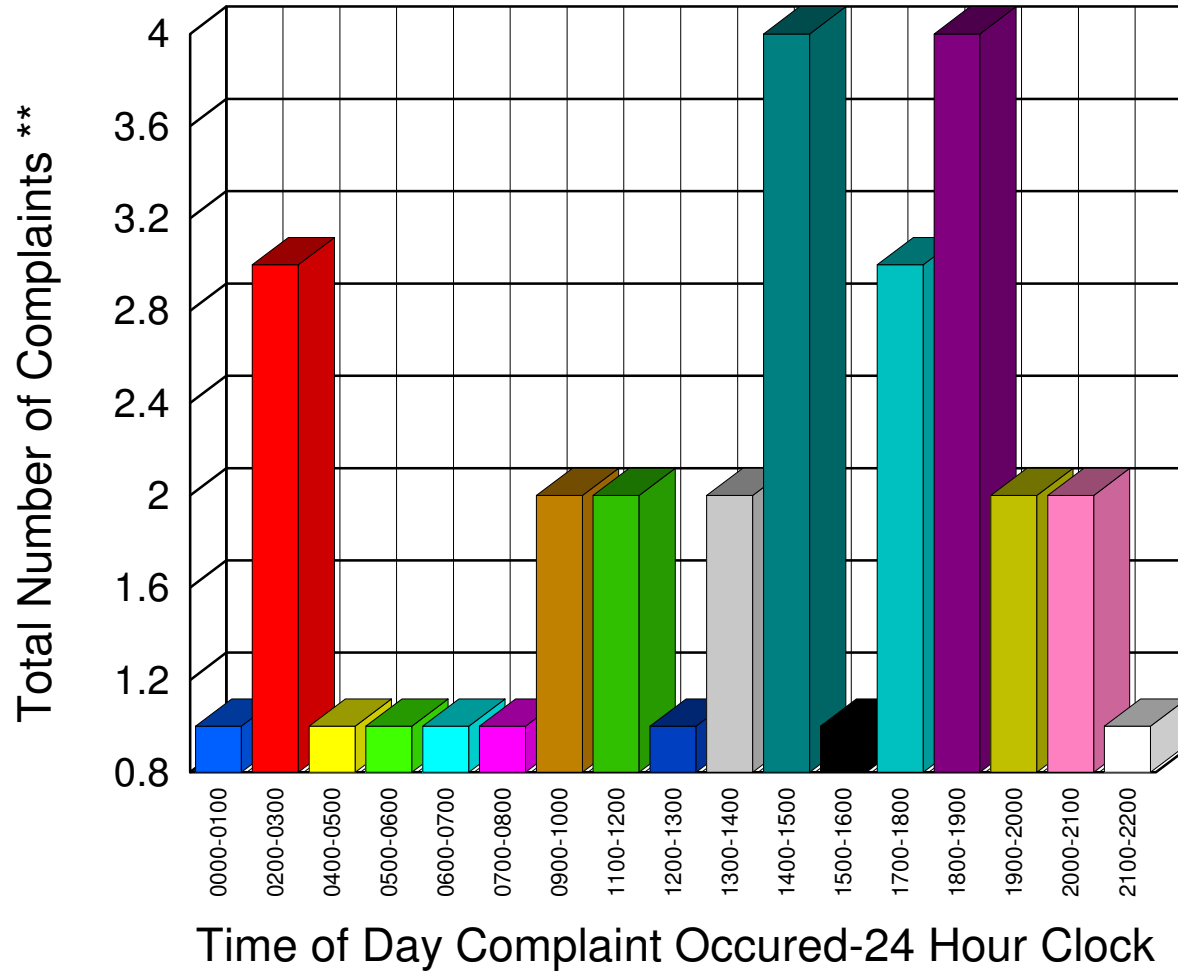
Total 24

** Complaints taken by Muskegon Sheriff's Office

Muskegon County Sheriff's Office

Listing of Offense Reports - Ravenna Village and Township - 02/01/2008 07:40:00 to 02/29/2008 15:56:49

| | |
|-----------|---|
| 0000-0100 | 1 |
| 0200-0300 | 3 |
| 0400-0500 | 1 |
| 0500-0600 | 1 |
| 0600-0700 | 1 |
| 0700-0800 | 1 |
| 0900-1000 | 2 |
| 1100-1200 | 2 |
| 1200-1300 | 1 |
| 1300-1400 | 2 |
| 1400-1500 | 4 |
| 1500-1600 | 1 |
| 1700-1800 | 3 |
| 1800-1900 | 4 |
| 1900-2000 | 2 |
| 2000-2100 | 2 |
| 2100-2200 | 1 |



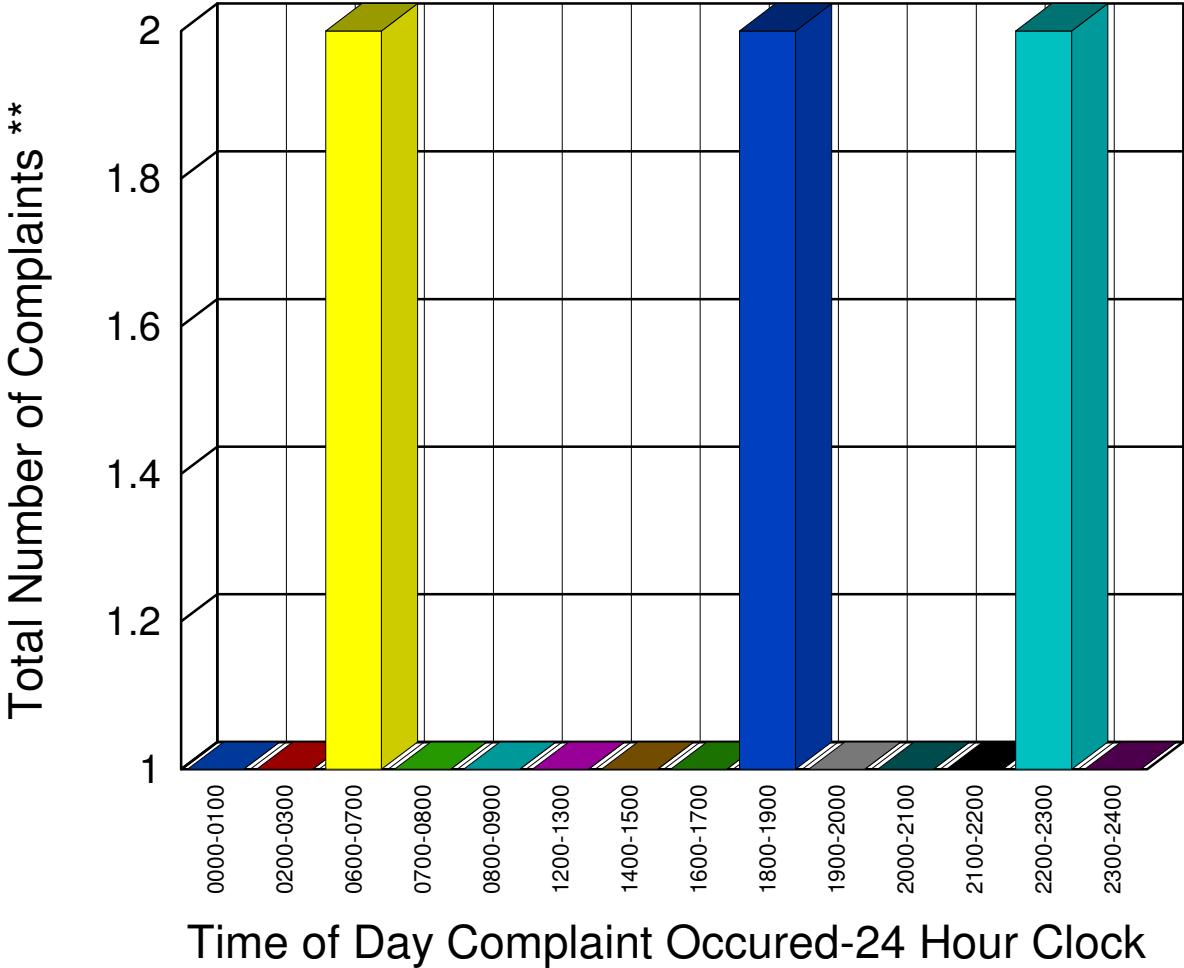
Total 32

** Complaints taken by Muskegon Sheriff's Office

Muskegon County Sheriff's Office

Listing of Offense Reports - Sullivan Township - 02/04/2008 16:35:00 to 02/24/2008 23:59:59

| | |
|-----------|---|
| 0000-0100 | 1 |
| 0200-0300 | 1 |
| 0600-0700 | 2 |
| 0700-0800 | 1 |
| 0800-0900 | 1 |
| 1200-1300 | 1 |
| 1400-1500 | 1 |
| 1600-1700 | 1 |
| 1800-1900 | 2 |
| 1900-2000 | 1 |
| 2000-2100 | 1 |
| 2100-2200 | 1 |
| 2200-2300 | 2 |
| 2300-2400 | 1 |



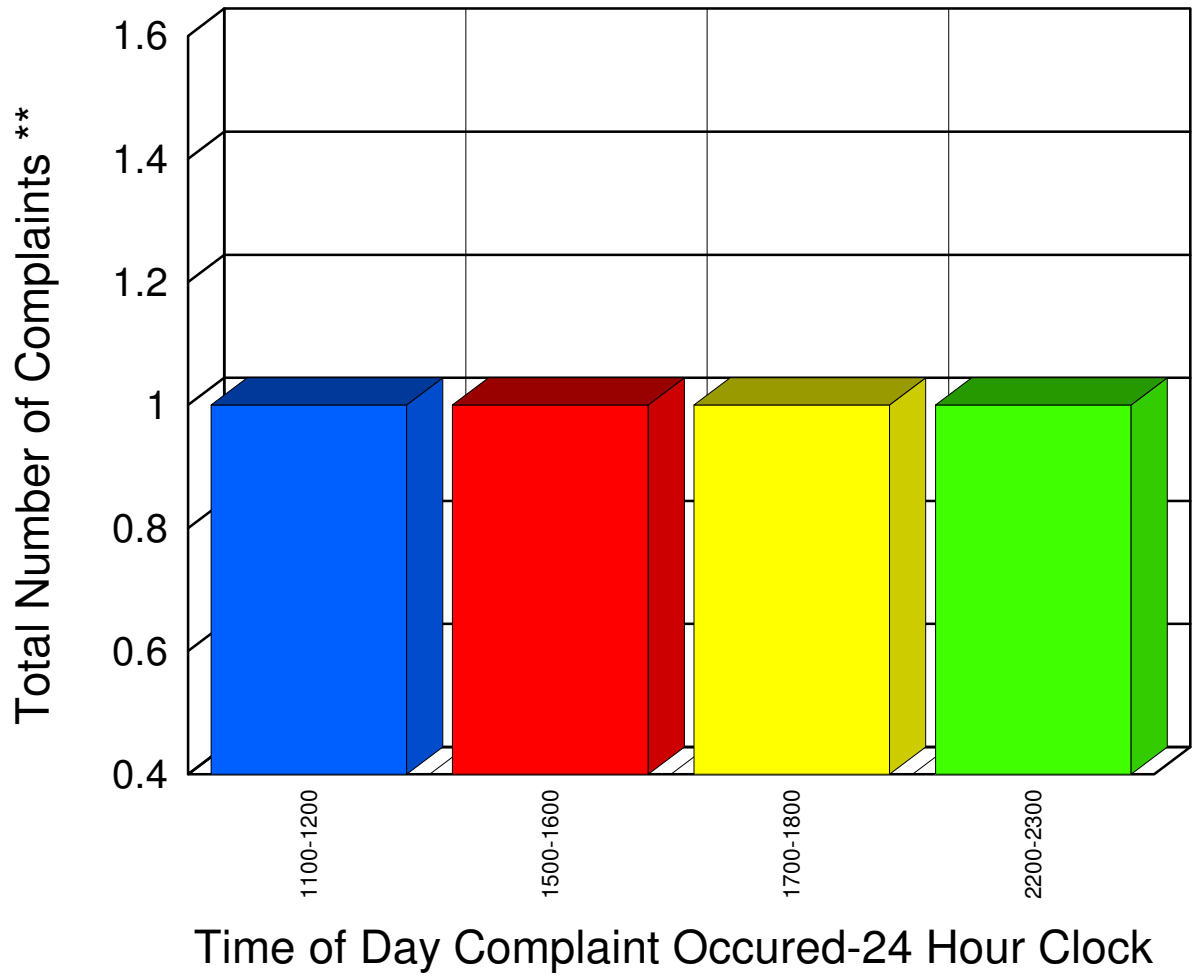
| | |
|-------|----|
| Total | 17 |
|-------|----|

** Complaints taken by Muskegon Sheriff's Office

Muskegon County Sheriff's Office

Listing of Offense Reports - White River Township - 02/04/2008 15:59:59 to 02/26/2008 11:41:56

| | |
|------------------|----------|
| <u>1100-1200</u> | <u>1</u> |
| <u>1500-1600</u> | <u>1</u> |
| <u>1700-1800</u> | <u>1</u> |
| <u>2200-2300</u> | <u>1</u> |



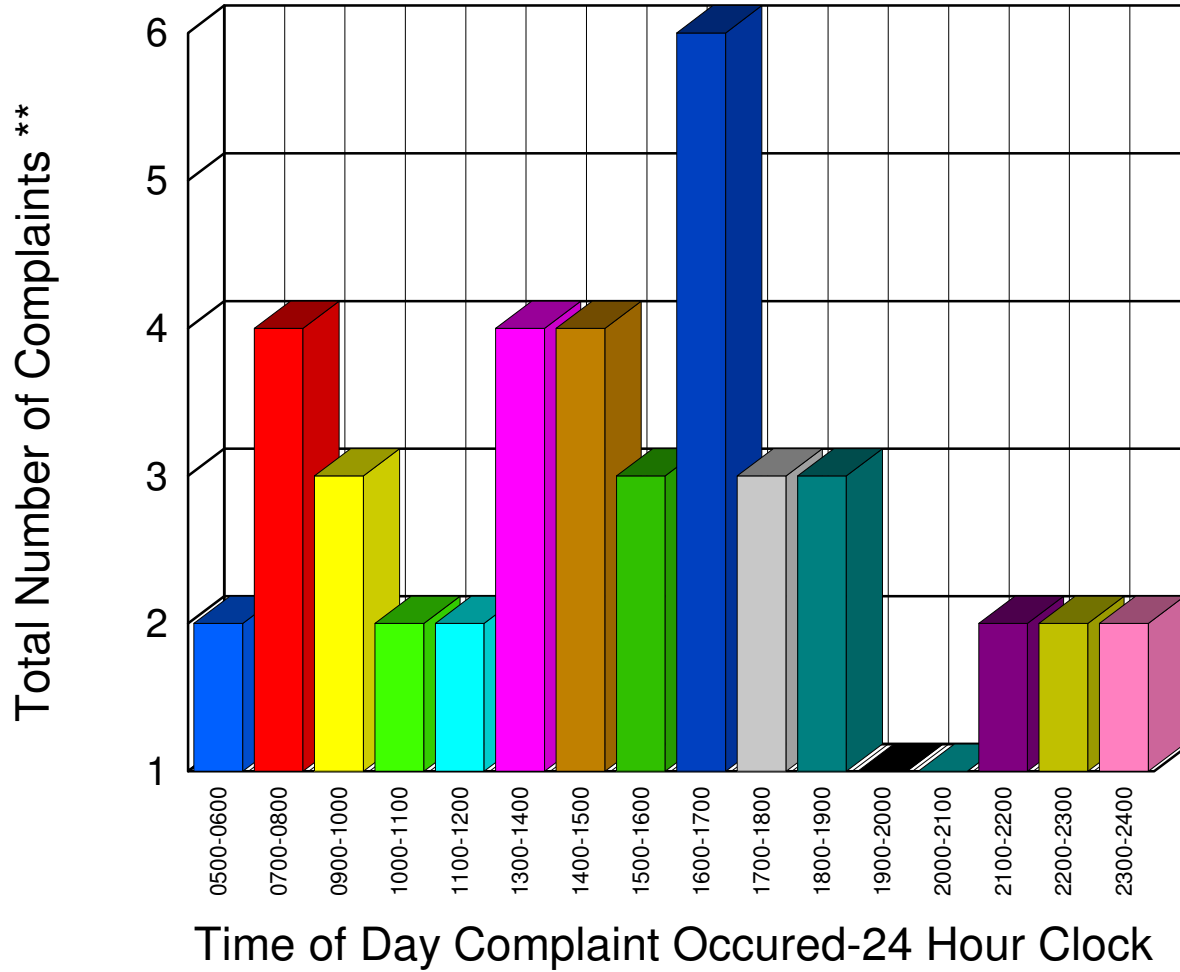
| | |
|-------|---|
| Total | 4 |
|-------|---|

** Complaints taken by Muskegon Sheriff's Office

Muskegon County Sheriff's Office

Listing of Offense Reports - Whitehall Township - 02/01/2008 15:05:00 to 02/29/2008 21:59:59

| | |
|-----------|---|
| 0500-0600 | 2 |
| 0700-0800 | 4 |
| 0900-1000 | 3 |
| 1000-1100 | 2 |
| 1100-1200 | 2 |
| 1300-1400 | 4 |
| 1400-1500 | 4 |
| 1500-1600 | 3 |
| 1600-1700 | 6 |
| 1700-1800 | 3 |
| 1800-1900 | 3 |
| 1900-2000 | 1 |
| 2000-2100 | 1 |
| 2100-2200 | 2 |
| 2200-2300 | 2 |
| 2300-2400 | 2 |



Total 44

** Complaints taken by Muskegon Sheriff's Office