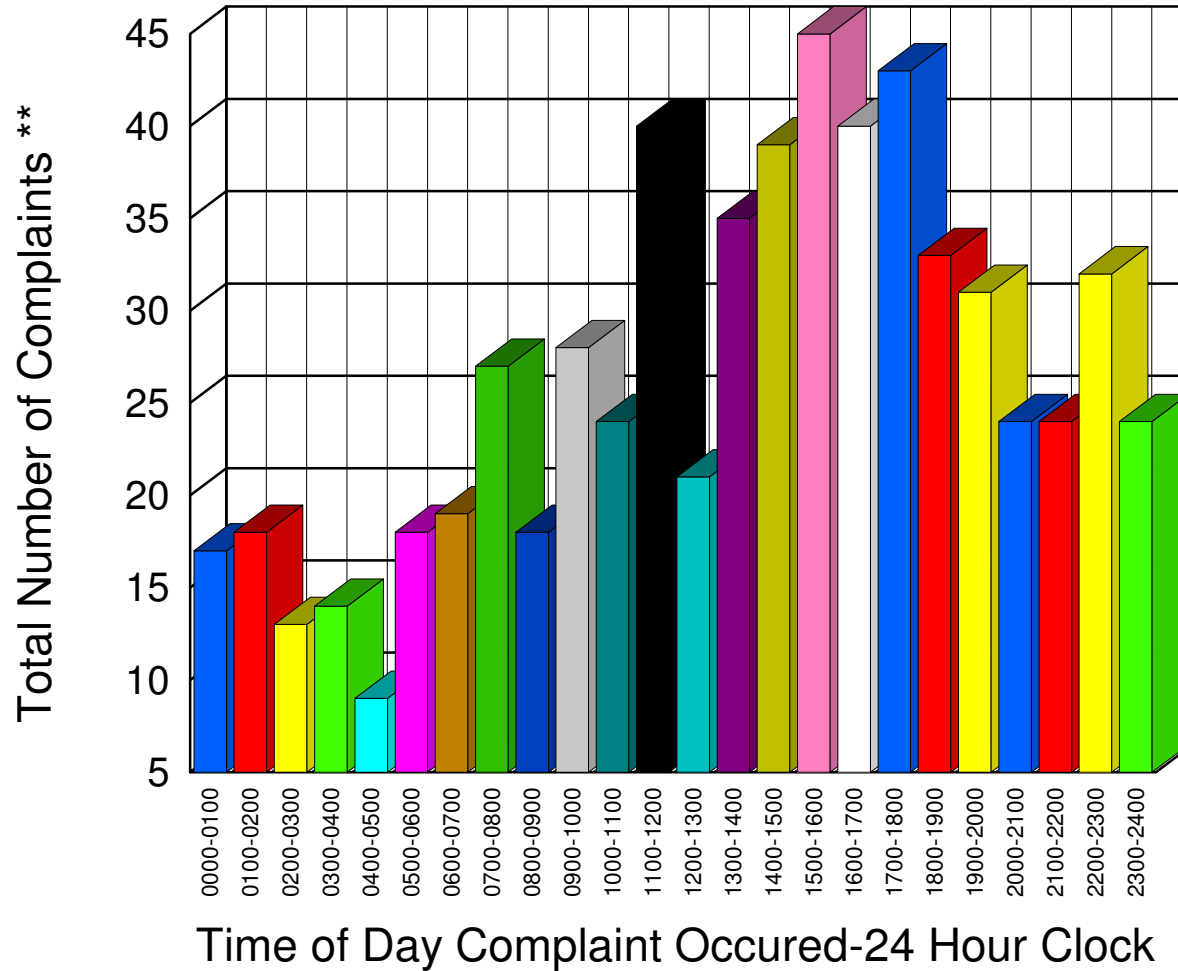


Muskegon County Sheriff's Office

Listing of Offense Reports-- 02/01/2010 00:00:00 to 02/28/2010 20:07:27

0000-0100	17
0100-0200	18
0200-0300	13
0300-0400	14
0400-0500	9
0500-0600	18
0600-0700	19
0700-0800	27
0800-0900	18
0900-1000	28
1000-1100	24
1100-1200	40
1200-1300	21
1300-1400	35
1400-1500	39
1500-1600	45
1600-1700	40
1700-1800	43
1800-1900	33
1900-2000	31
2000-2100	24
2100-2200	24
2200-2300	32
2300-2400	24



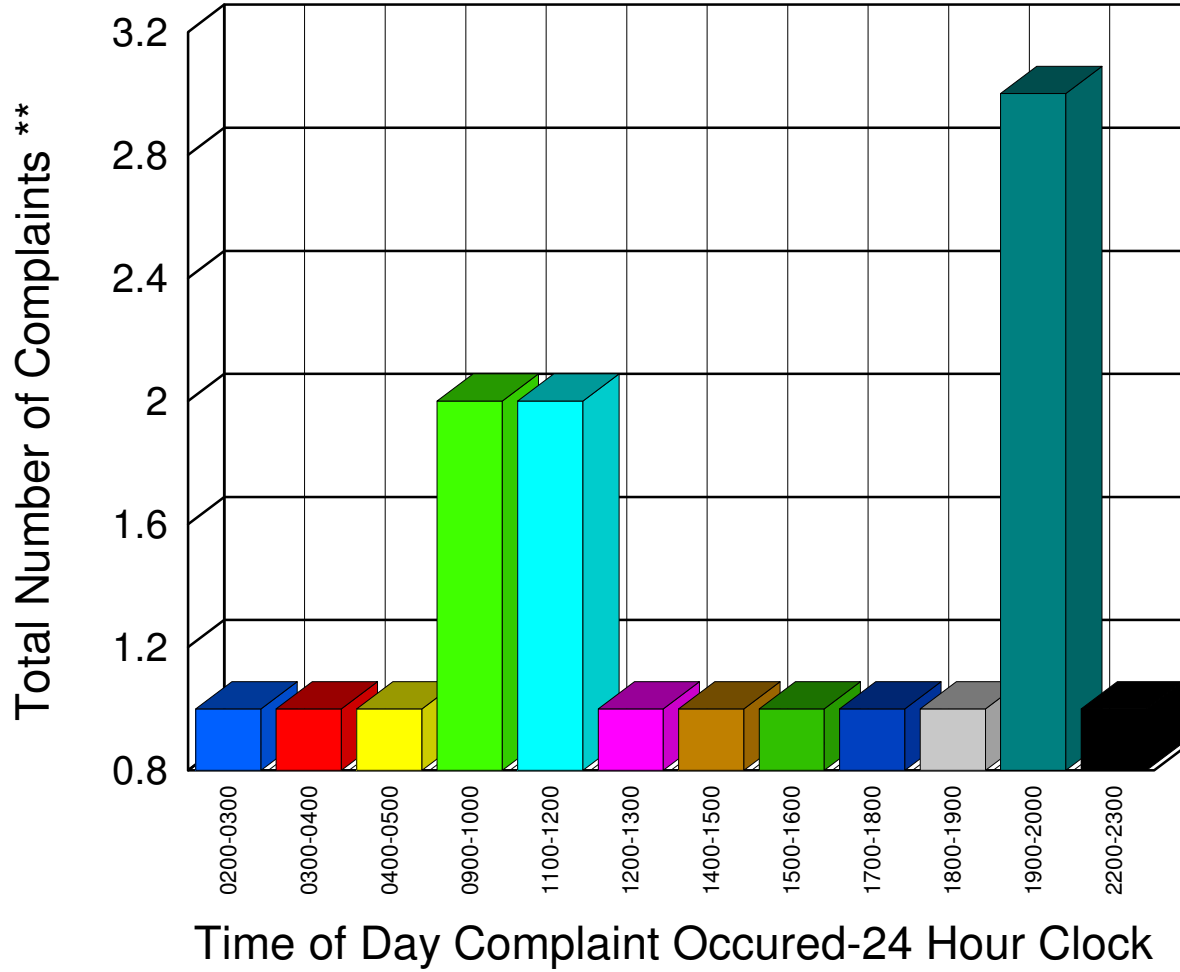
Total 636

** Complaints taken by Muskegon Sheriff's Office

Muskegon County Sheriff's Office

Listing of Offense Reports - Blue Lake Township - 02/03/2010 18:08:58 to 02/28/2010 03:54:03

<u>0200-0300</u>	<u>1</u>
<u>0300-0400</u>	<u>1</u>
<u>0400-0500</u>	<u>1</u>
<u>0900-1000</u>	<u>2</u>
<u>1100-1200</u>	<u>2</u>
<u>1200-1300</u>	<u>1</u>
<u>1400-1500</u>	<u>1</u>
<u>1500-1600</u>	<u>1</u>
<u>1700-1800</u>	<u>1</u>
<u>1800-1900</u>	<u>1</u>
<u>1900-2000</u>	<u>3</u>
<u>2200-2300</u>	<u>1</u>



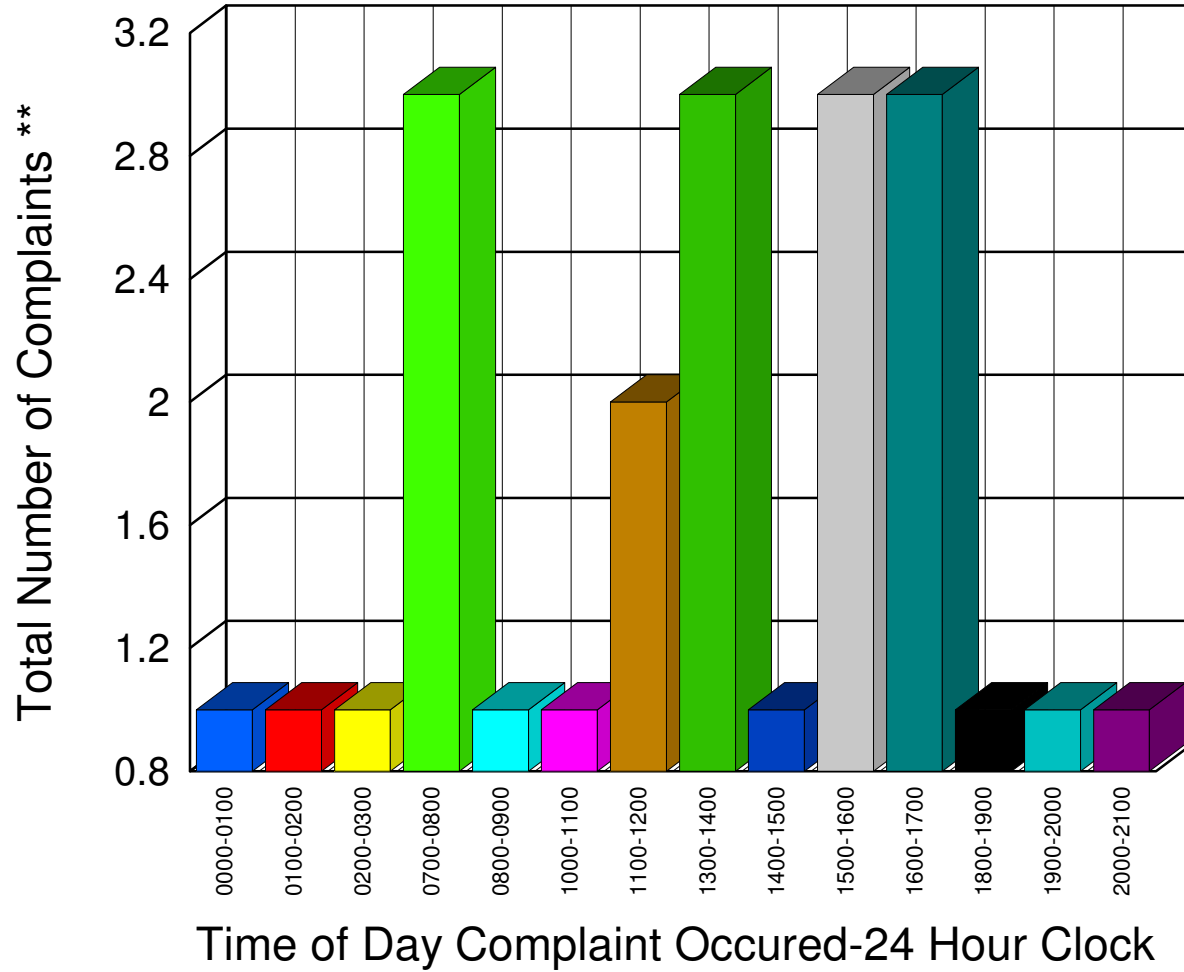
Total 16

** Complaints taken by Muskegon Sheriff's Office

Muskegon County Sheriff's Office

Listing of Offense Reports - Casnovia Village and Township - 02/02/2010 08:00:00 to 02/28/2010 20:00:00

0000-0100	1
0100-0200	1
0200-0300	1
0700-0800	3
0800-0900	1
1000-1100	1
1100-1200	2
1300-1400	3
1400-1500	1
1500-1600	3
1600-1700	3
1800-1900	1
1900-2000	1
2000-2100	1



Total	23
-------	----

** Complaints taken by Muskegon Sheriff's Office

Muskegon County Sheriff's Office

Listing of Offense Reports - Cedar Creek Township -

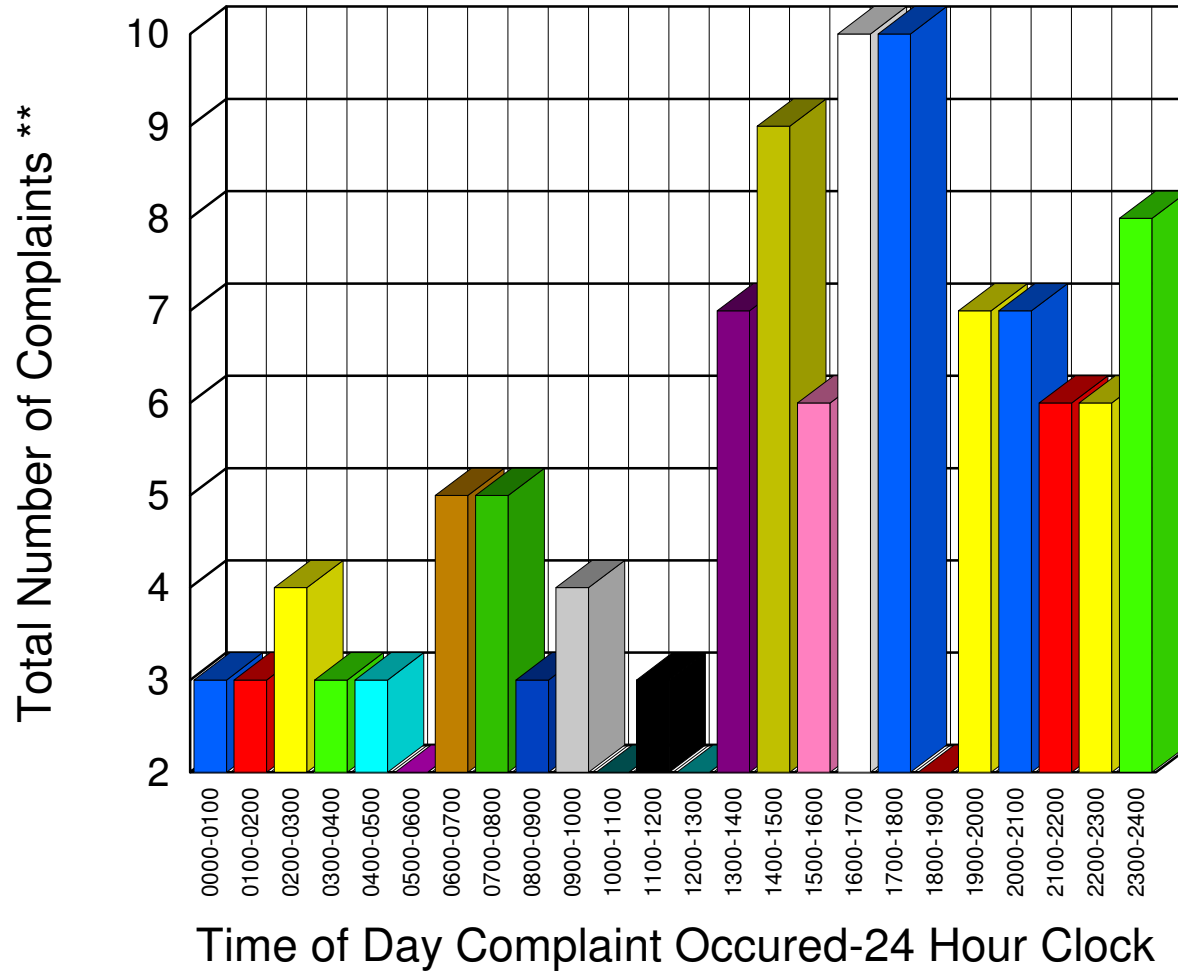
Total

** Complaints taken by Muskegon Sheriff's Office

Muskegon County Sheriff's Office

Listing of Offense Reports - Lakewood Club and Dalton Township - 02/01/2010 10:29:38 to 02/28/2010 15:40:03

0000-0100	3
0100-0200	3
0200-0300	4
0300-0400	3
0400-0500	3
0500-0600	2
0600-0700	5
0700-0800	5
0800-0900	3
0900-1000	4
1000-1100	2
1100-1200	3
1200-1300	2
1300-1400	7
1400-1500	9
1500-1600	6
1600-1700	10
1700-1800	10
1800-1900	2
1900-2000	7
2000-2100	7
2100-2200	6
2200-2300	6
2300-2400	8



Total **120**

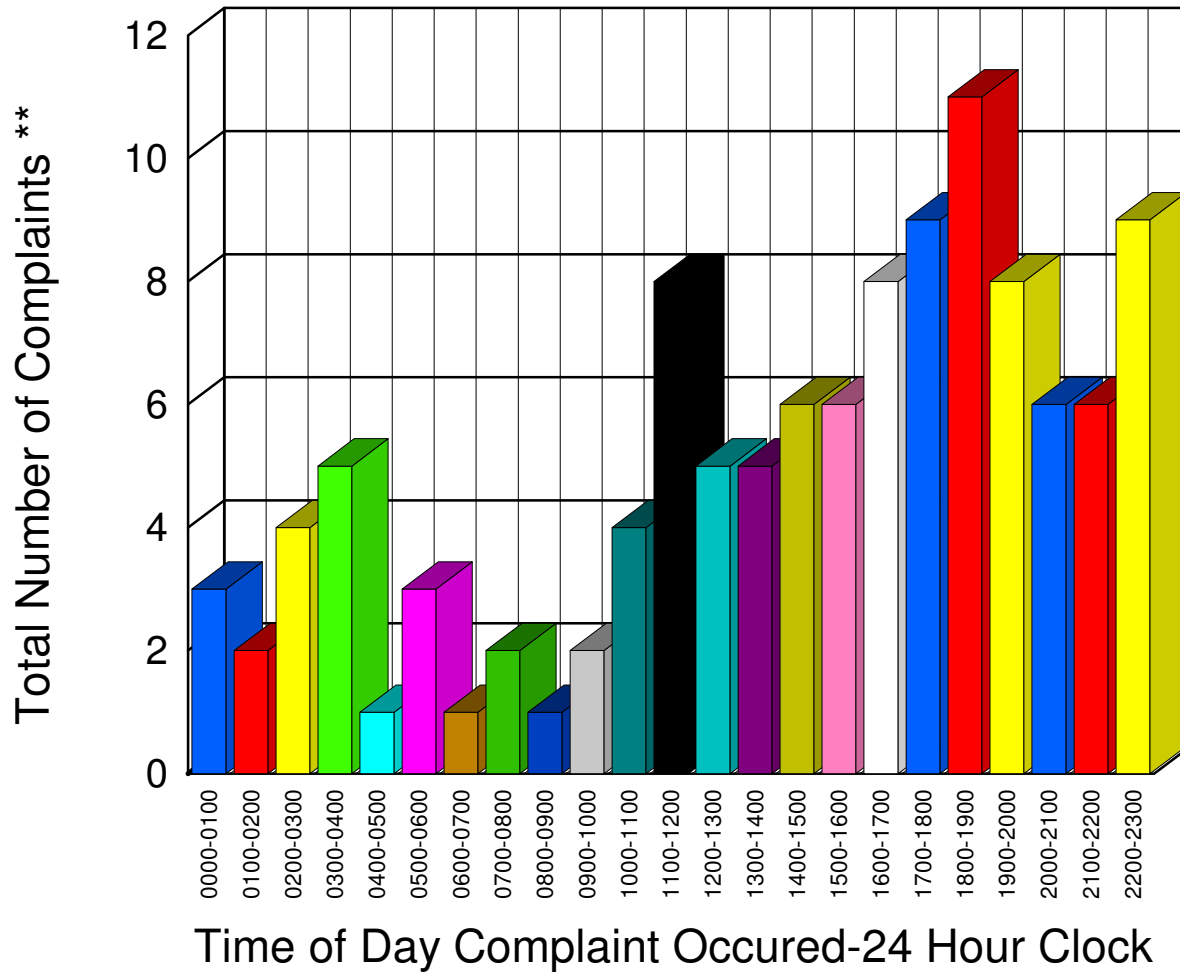
** Complaints taken by Muskegon Sheriff's Office

Muskegon County Sheriff's Office

Listing of Offense Reports - Egelston Township - 02/01/2010 19:18:12 to 02/28/2010 20:07:27

0000-0100	3
0100-0200	2
0200-0300	4
0300-0400	5
0400-0500	1
0500-0600	3
0600-0700	1
0700-0800	2
0800-0900	1
0900-1000	2
1000-1100	4
1100-1200	8
1200-1300	5
1300-1400	5
1400-1500	6
1500-1600	6
1600-1700	8
1700-1800	9
1800-1900	11
1900-2000	8
2000-2100	6
2100-2200	6
2200-2300	9

Total 115

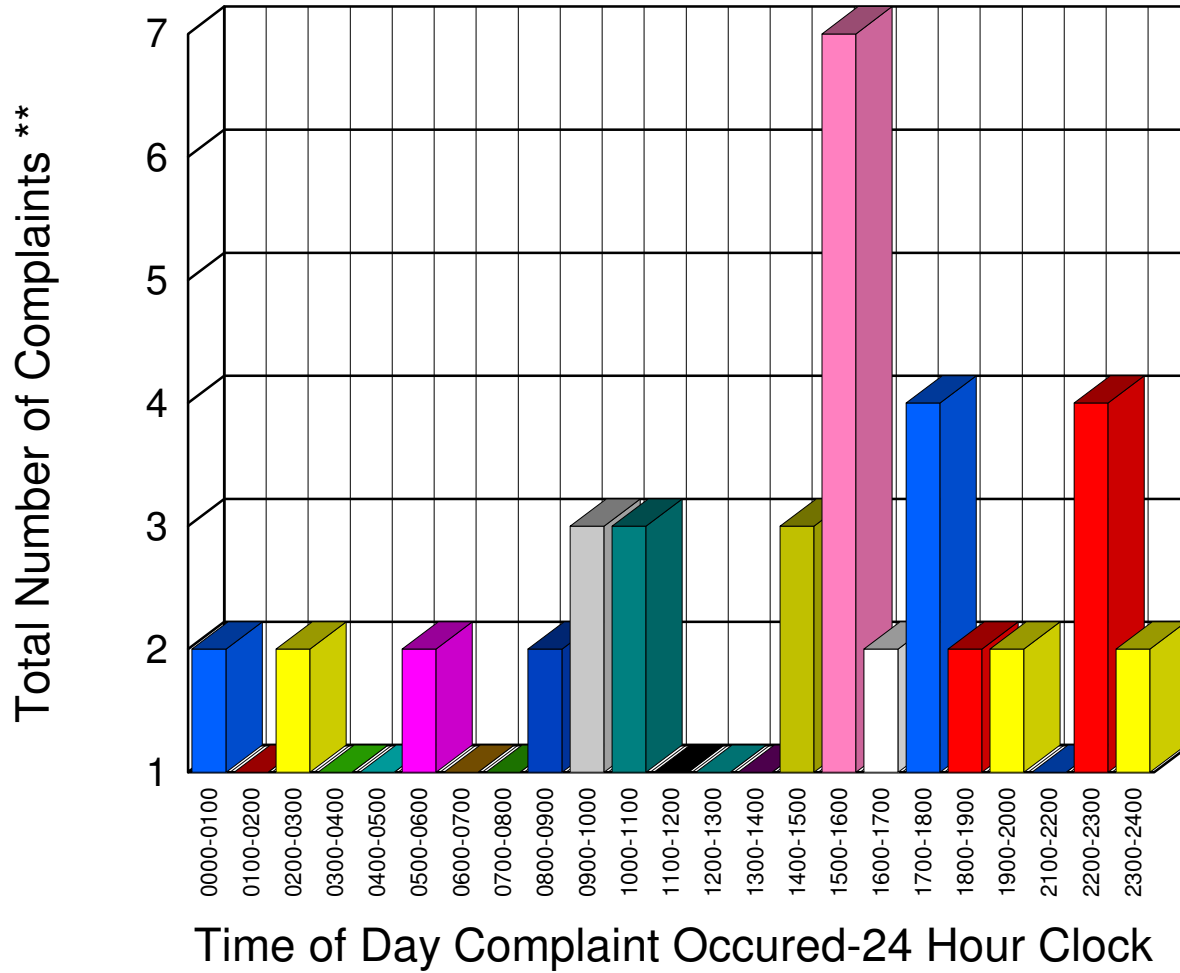


** Complaints taken by Muskegon Sheriff's Office

Muskegon County Sheriff's Office

Listing of Offense Reports - Fruitland Township - 02/01/2010 07:00:00 to 02/28/2010 17:15:00

0000-0100	2
0100-0200	1
0200-0300	2
0300-0400	1
0400-0500	1
0500-0600	2
0600-0700	1
0700-0800	1
0800-0900	2
0900-1000	3
1000-1100	3
1100-1200	1
1200-1300	1
1300-1400	1
1400-1500	3
1500-1600	7
1600-1700	2
1700-1800	4
1800-1900	2
1900-2000	2
2100-2200	1
2200-2300	4
2300-2400	2
<hr/>	
<hr/>	
Total	49

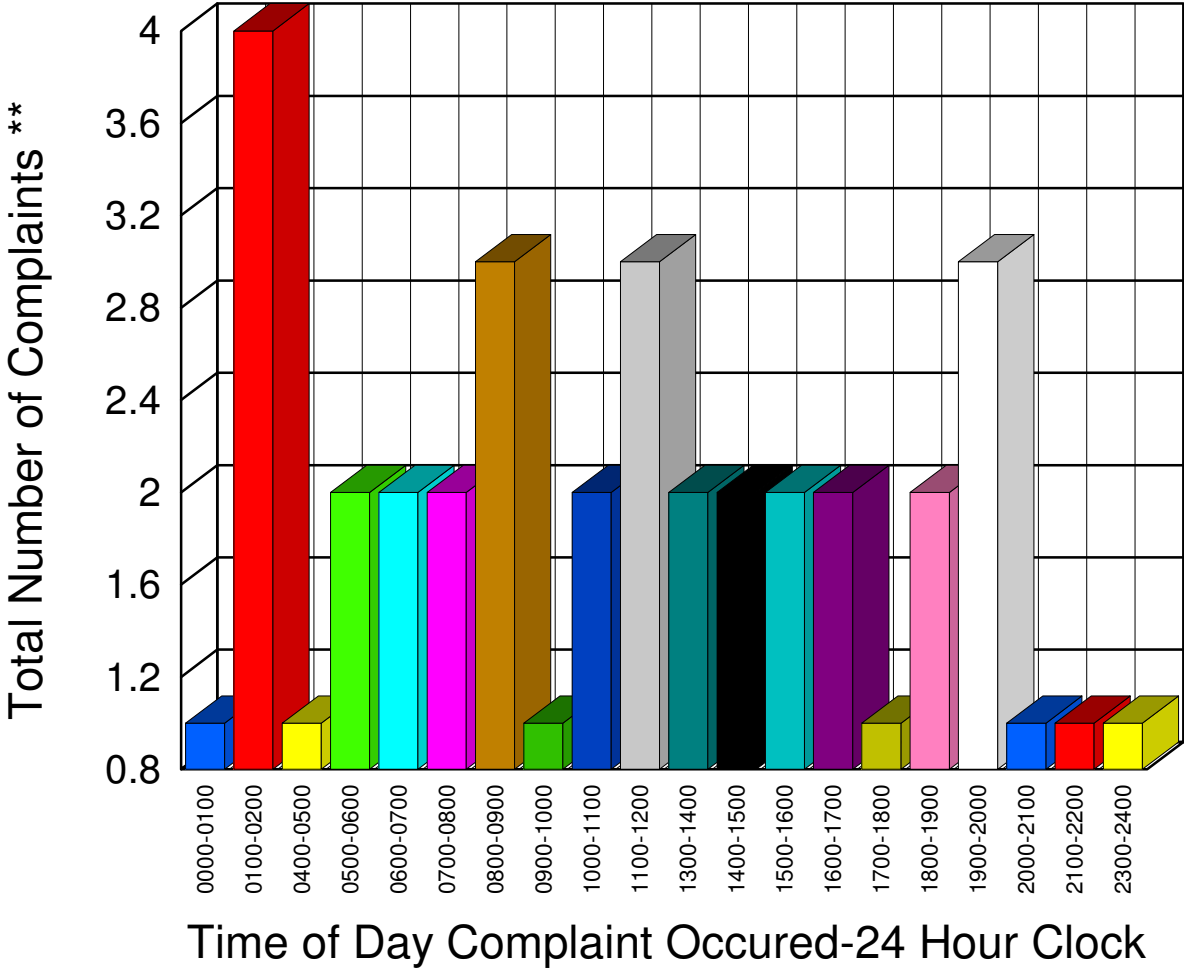


** Complaints taken by Muskegon Sheriff's Office

Muskegon County Sheriff's Office

Listing of Offense Reports - Holton Township - 02/01/2010 08:03:16 to 02/27/2010 23:16:03

0000-0100	1
0100-0200	4
0400-0500	1
0500-0600	2
0600-0700	2
0700-0800	2
0800-0900	3
0900-1000	1
1000-1100	2
1100-1200	3
1300-1400	2
1400-1500	2
1500-1600	2
1600-1700	2
1700-1800	1
1800-1900	2
1900-2000	3
2000-2100	1
2100-2200	1
2300-2400	1



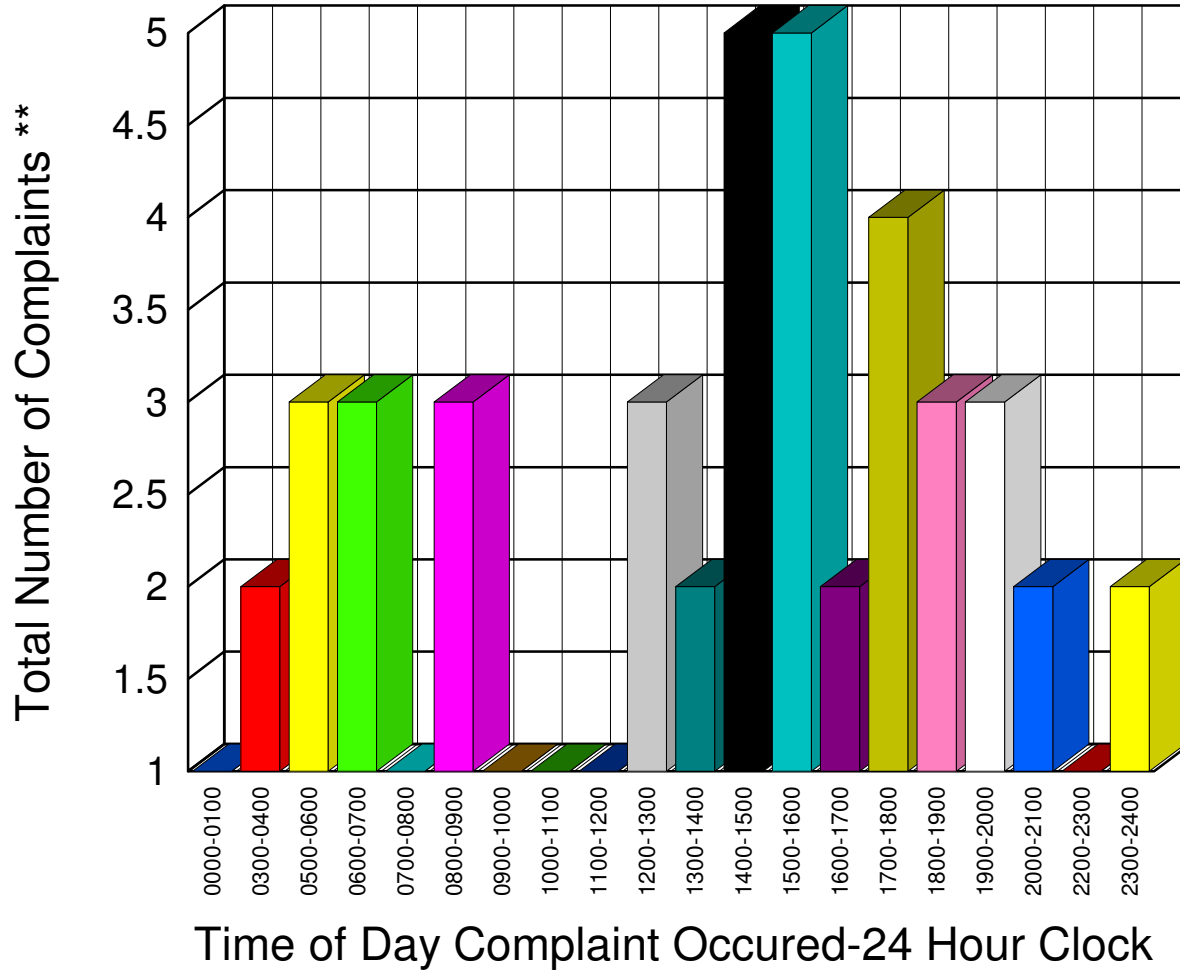
Total 38

** Complaints taken by Muskegon Sheriff's Office

Muskegon County Sheriff's Office

Listing of Offense Reports - Laketon Township - 02/01/2010 14:05:00 to 02/28/2010 06:32:18

0000-0100	1
0300-0400	2
0500-0600	3
0600-0700	3
0700-0800	1
0800-0900	3
0900-1000	1
1000-1100	1
1100-1200	1
1200-1300	3
1300-1400	2
1400-1500	5
1500-1600	5
1600-1700	2
1700-1800	4
1800-1900	3
1900-2000	3
2000-2100	2
2200-2300	1
2300-2400	2



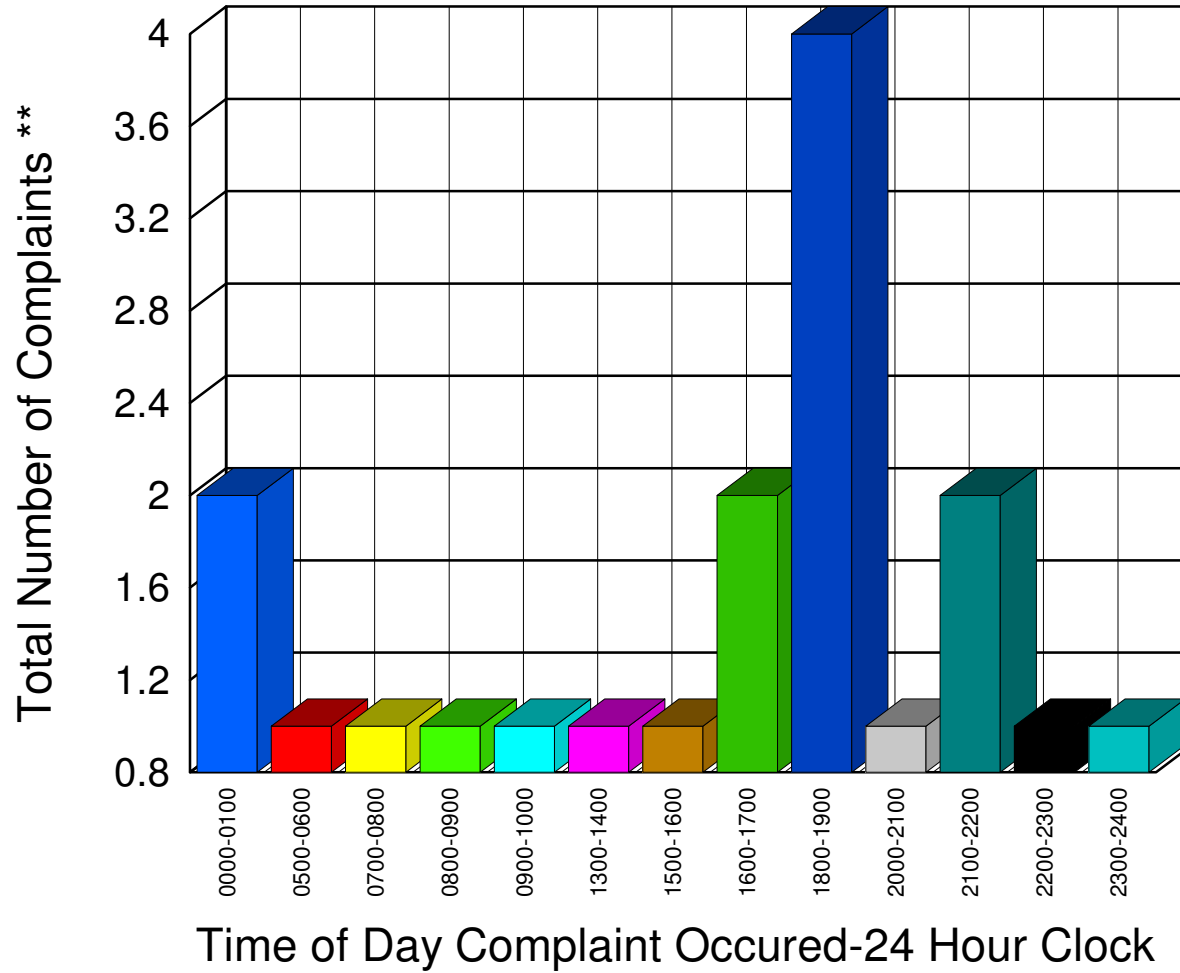
Total 48

** Complaints taken by Muskegon Sheriff's Office

Muskegon County Sheriff's Office

Listing of Offense Reports - Montague Township - 02/01/2010 00:27:40 to 02/27/2010 22:27:52

0000-0100	2
0500-0600	1
0700-0800	1
0800-0900	1
0900-1000	1
1300-1400	1
1500-1600	1
1600-1700	2
1800-1900	4
2000-2100	1
2100-2200	2
2200-2300	1
2300-2400	1



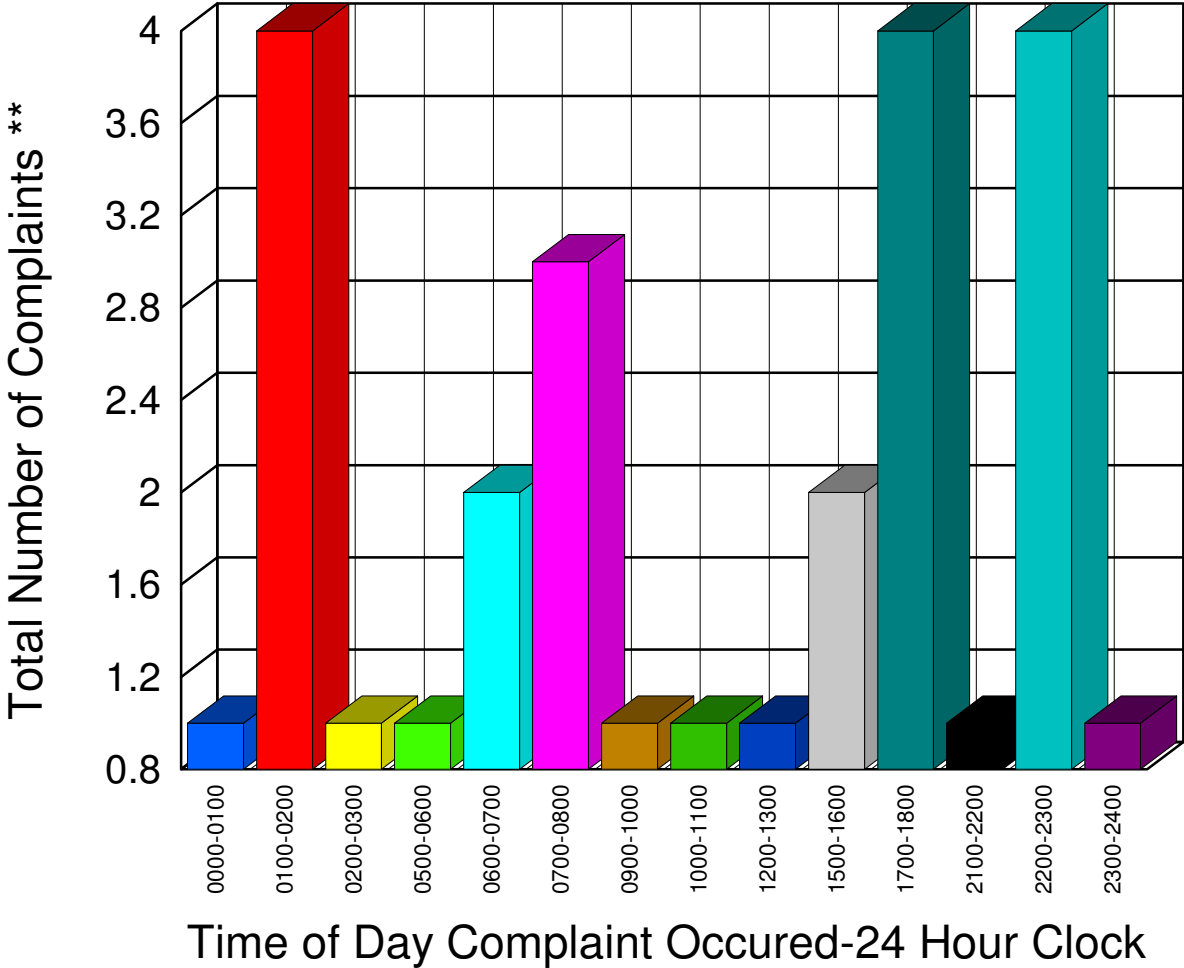
Total **19**

** Complaints taken by Muskegon Sheriff's Office

Muskegon County Sheriff's Office

Listing of Offense Reports - Moorland Township - 02/01/2010 06:13:00 to 02/27/2010 15:38:51

0000-0100	1
0100-0200	4
0200-0300	1
0500-0600	1
0600-0700	2
0700-0800	3
0900-1000	1
1000-1100	1
1200-1300	1
1500-1600	2
1700-1800	4
2100-2200	1
2200-2300	4
2300-2400	1



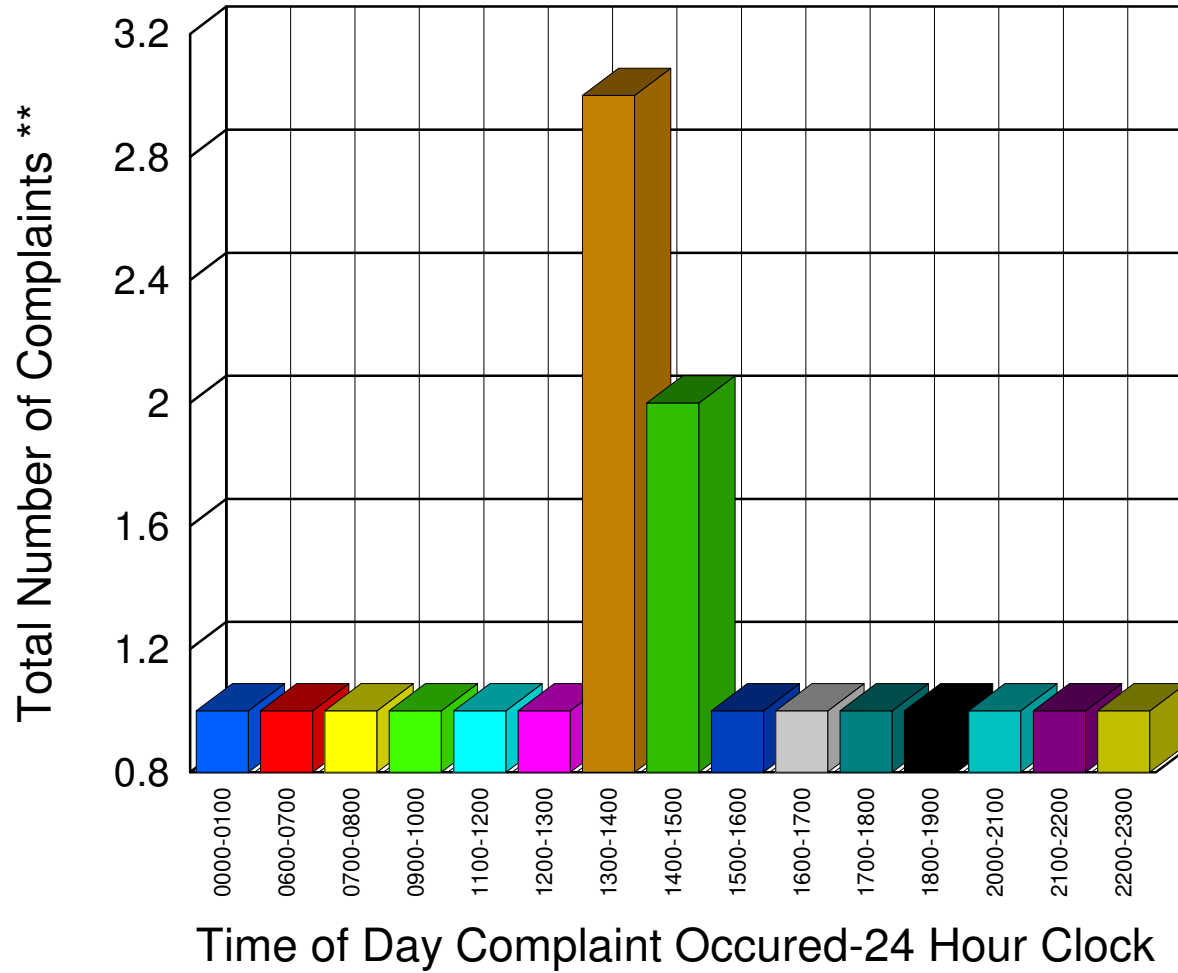
Total	27
-------	----

** Complaints taken by Muskegon Sheriff's Office

Muskegon County Sheriff's Office

Listing of Offense Reports - Ravenna Village and Township - 02/01/2010 13:30:10 to 02/27/2010 13:17:59

0000-0100	1
0600-0700	1
0700-0800	1
0900-1000	1
1100-1200	1
1200-1300	1
1300-1400	3
1400-1500	2
1500-1600	1
1600-1700	1
1700-1800	1
1800-1900	1
2000-2100	1
2100-2200	1
2200-2300	1



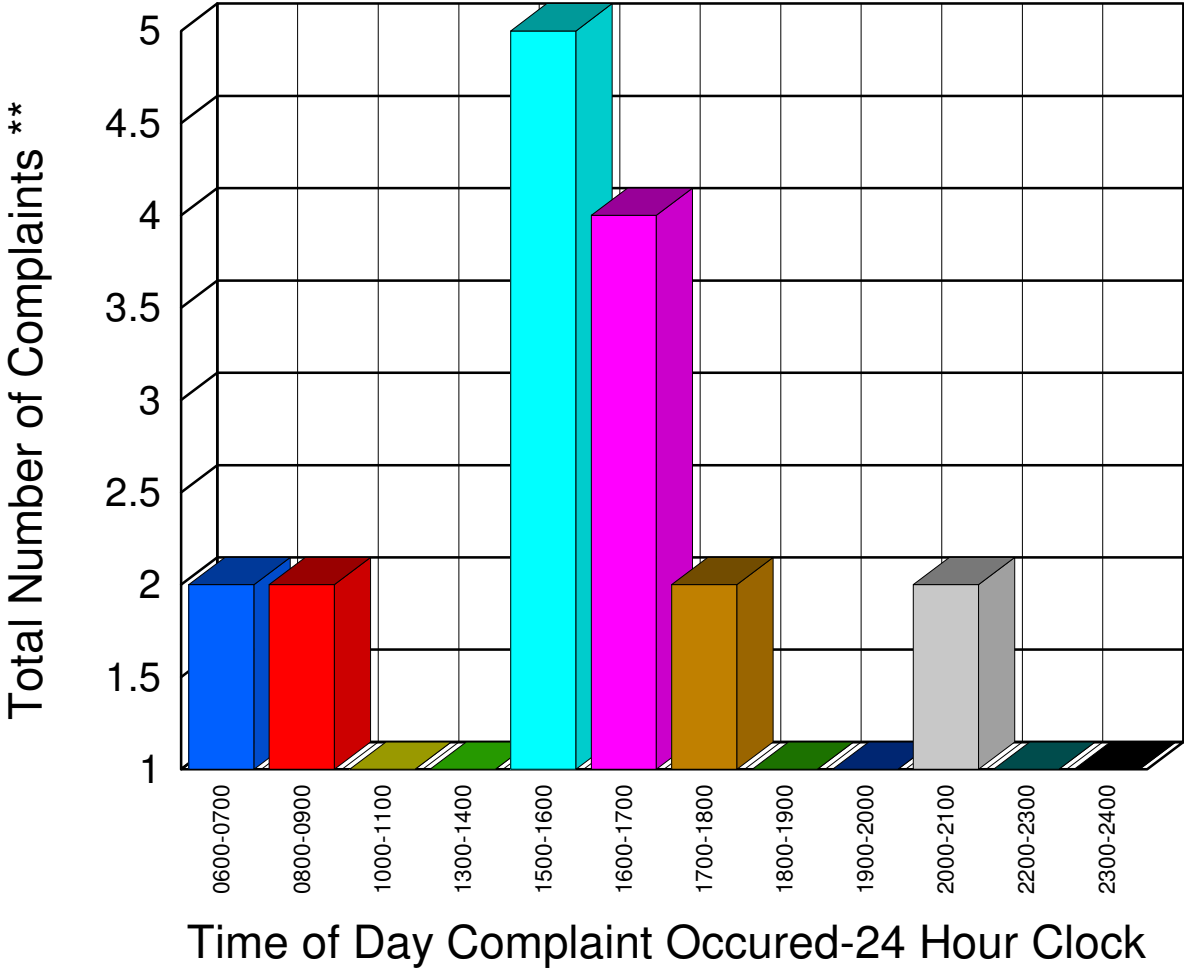
Total **18**

** Complaints taken by Muskegon Sheriff's Office

Muskegon County Sheriff's Office

Listing of Offense Reports - Sullivan Township - 02/02/2010 17:26:53 to 02/26/2010 00:00:00

0600-0700	2
0800-0900	2
1000-1100	1
1300-1400	1
1500-1600	5
1600-1700	4
1700-1800	2
1800-1900	1
1900-2000	1
2000-2100	2
2200-2300	1
2300-2400	1



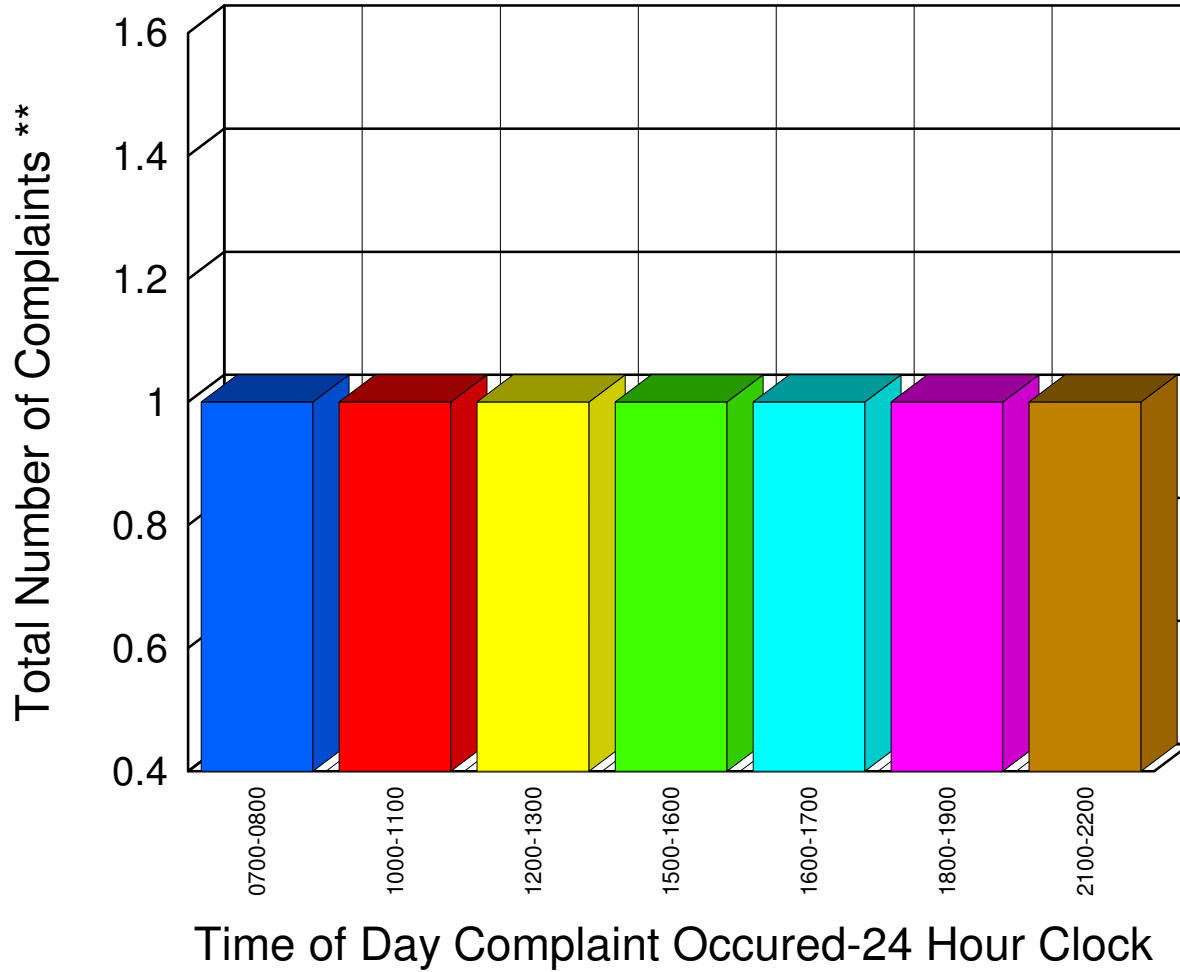
Total 23

** Complaints taken by Muskegon Sheriff's Office

Muskegon County Sheriff's Office

Listing of Offense Reports - White River Township - 02/02/2010 16:38:32 to 02/26/2010 12:26:29

<u>0700-0800</u>	<u>1</u>
<u>1000-1100</u>	<u>1</u>
<u>1200-1300</u>	<u>1</u>
<u>1500-1600</u>	<u>1</u>
<u>1600-1700</u>	<u>1</u>
<u>1800-1900</u>	<u>1</u>
<u>2100-2200</u>	<u>1</u>



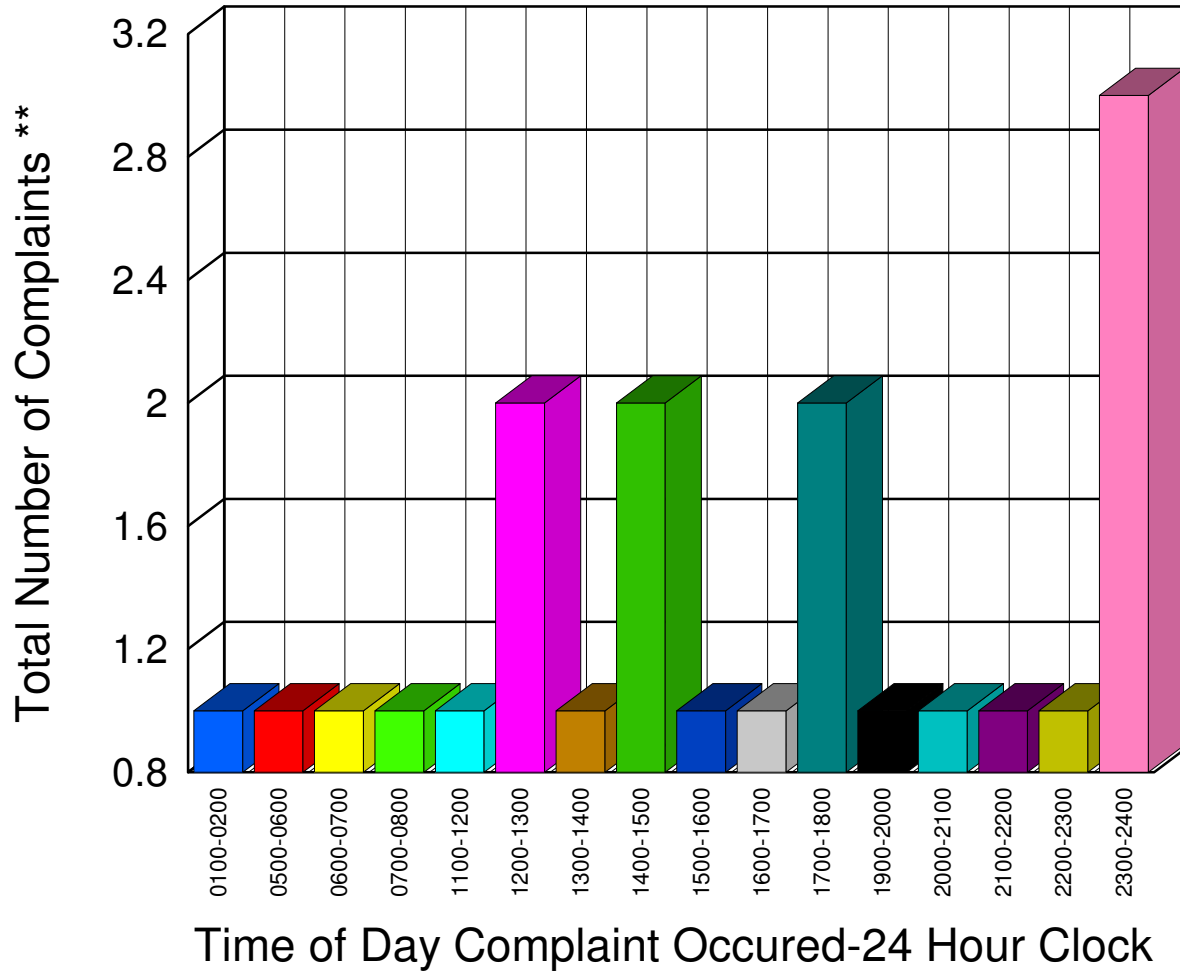
Total	7
-------	---

** Complaints taken by Muskegon Sheriff's Office

Muskegon County Sheriff's Office

Listing of Offense Reports - Whitehall Township - 02/01/2010 13:24:00 to 02/27/2010 12:51:23

0100-0200	1
0500-0600	1
0600-0700	1
0700-0800	1
1100-1200	1
1200-1300	2
1300-1400	1
1400-1500	2
1500-1600	1
1600-1700	1
1700-1800	2
1900-2000	1
2000-2100	1
2100-2200	1
2200-2300	1
2300-2400	3



Total 21

** Complaints taken by Muskegon Sheriff's Office