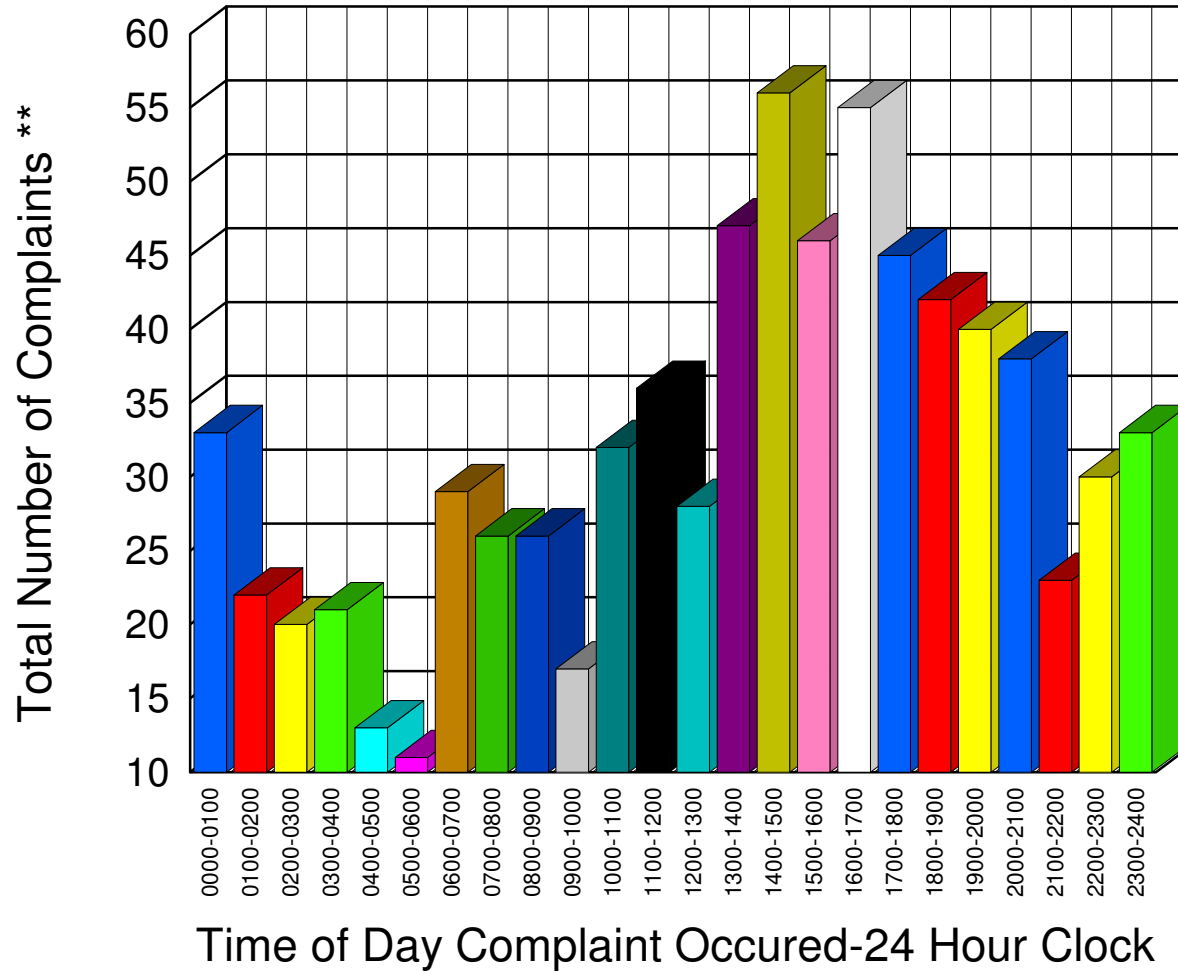


Muskegon County Sheriff's Office

Listing of Offense Reports-- 01/01/2008 00:00:00 to 01/31/2008 23:59:59

0000-0100	33
0100-0200	22
0200-0300	20
0300-0400	21
0400-0500	13
0500-0600	11
0600-0700	29
0700-0800	26
0800-0900	26
0900-1000	17
1000-1100	32
1100-1200	36
1200-1300	28
1300-1400	47
1400-1500	56
1500-1600	46
1600-1700	55
1700-1800	45
1800-1900	42
1900-2000	40
2000-2100	38
2100-2200	23
2200-2300	30
2300-2400	33



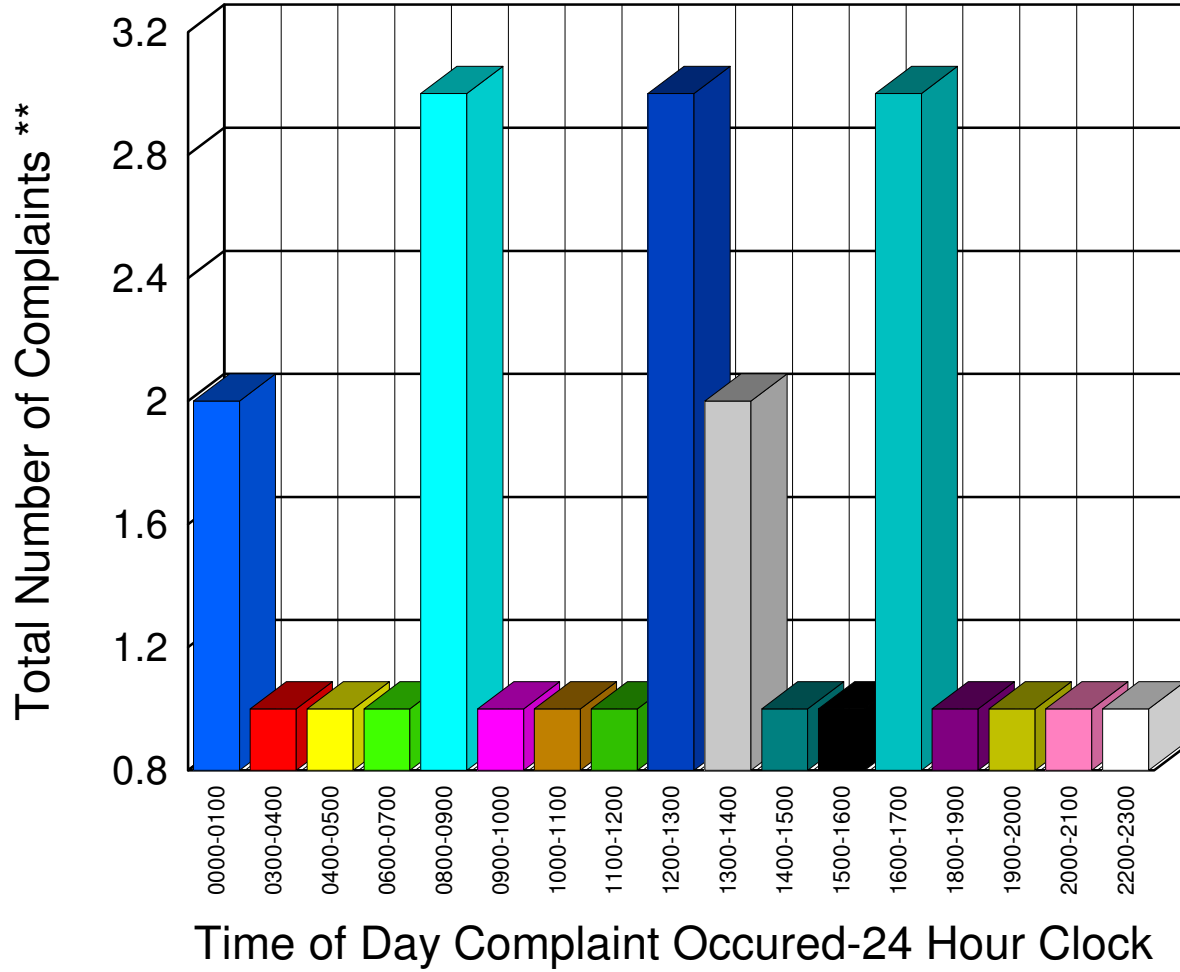
Total 769

** Complaints taken by Muskegon Sheriff's Office

Muskegon County Sheriff's Office

Listing of Offense Reports - Blue Lake Township - 01/01/2008 13:10:00 to 01/31/2008 09:51:00

0000-0100	2
0300-0400	1
0400-0500	1
0600-0700	1
0800-0900	3
0900-1000	1
1000-1100	1
1100-1200	1
1200-1300	3
1300-1400	2
1400-1500	1
1500-1600	1
1600-1700	3
1800-1900	1
1900-2000	1
2000-2100	1
2200-2300	1



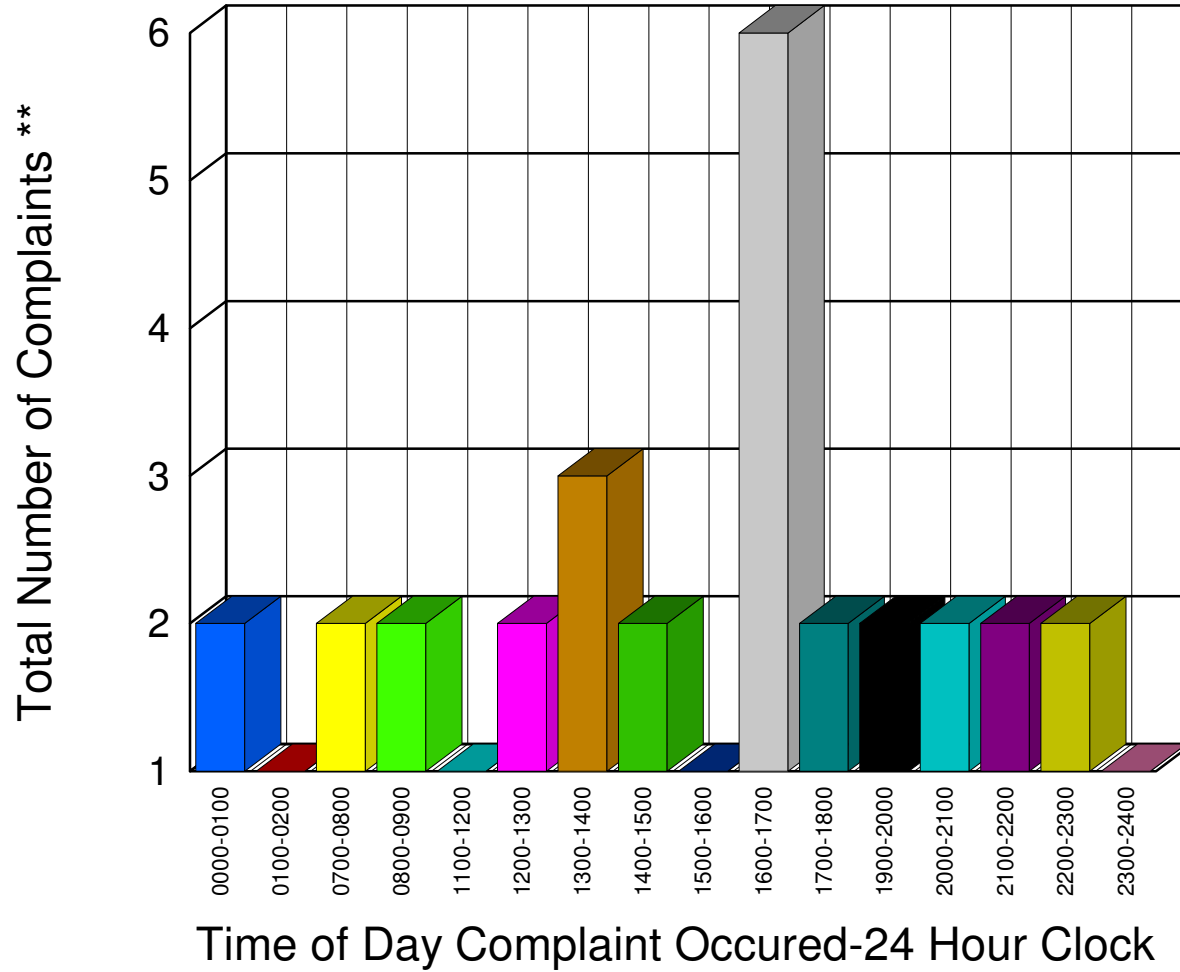
Total 25

** Complaints taken by Muskegon Sheriff's Office

Muskegon County Sheriff's Office

Listing of Offense Reports - Casnovia Village and Township - 01/03/2008 11:24:00 to 01/31/2008 13:12:02

0000-0100	2
0100-0200	1
0700-0800	2
0800-0900	2
1100-1200	1
1200-1300	2
1300-1400	3
1400-1500	2
1500-1600	1
1600-1700	6
1700-1800	2
1900-2000	2
2000-2100	2
2100-2200	2
2200-2300	2
2300-2400	1



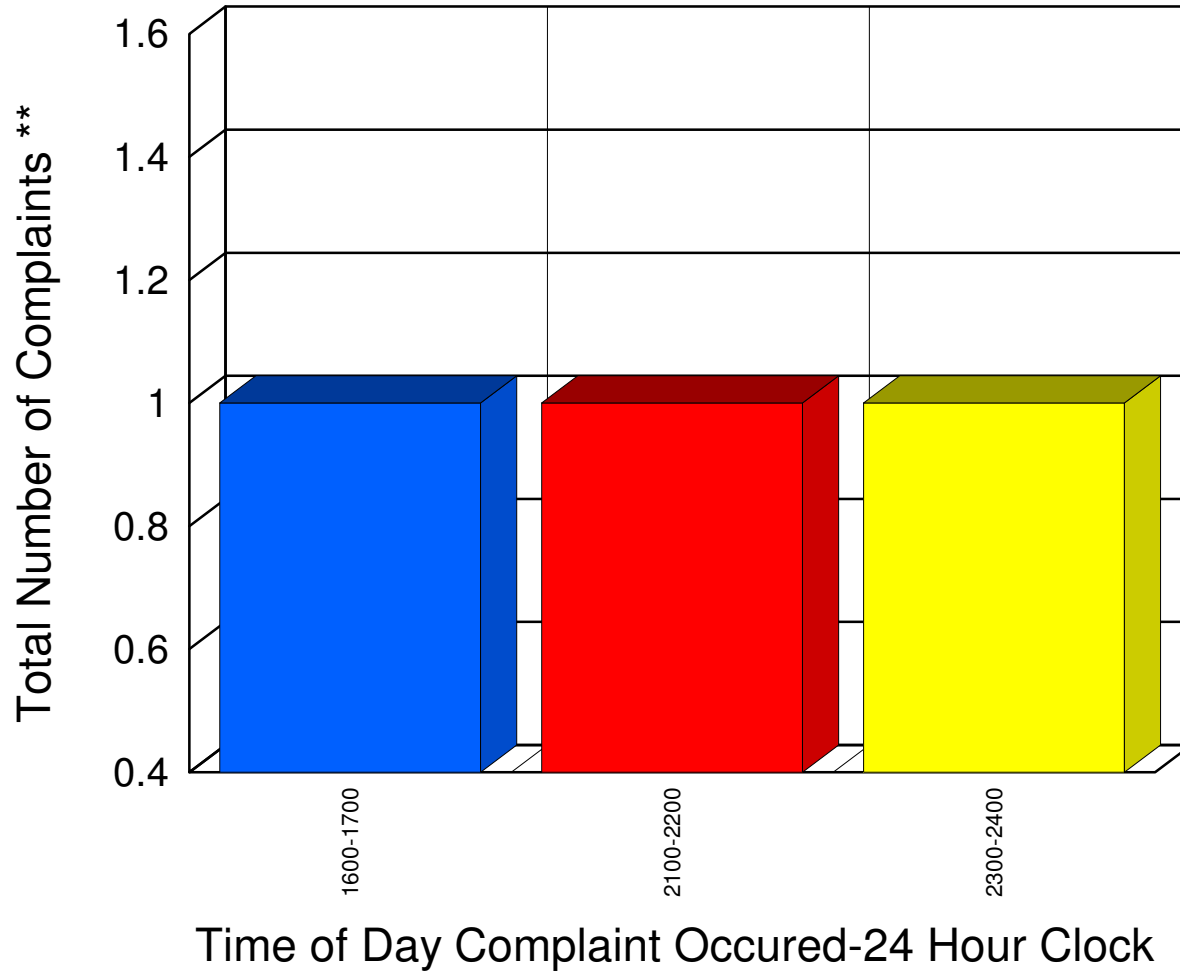
Total	33
-------	----

** Complaints taken by Muskegon Sheriff's Office

Muskegon County Sheriff's Office

Listing of Offense Reports - Cedar Creek Township - 01/05/2008 22:00:00 to 01/28/2008 16:44:59

<u>1600-1700</u>	<u>1</u>
<u>2100-2200</u>	<u>1</u>
<u>2300-2400</u>	<u>1</u>



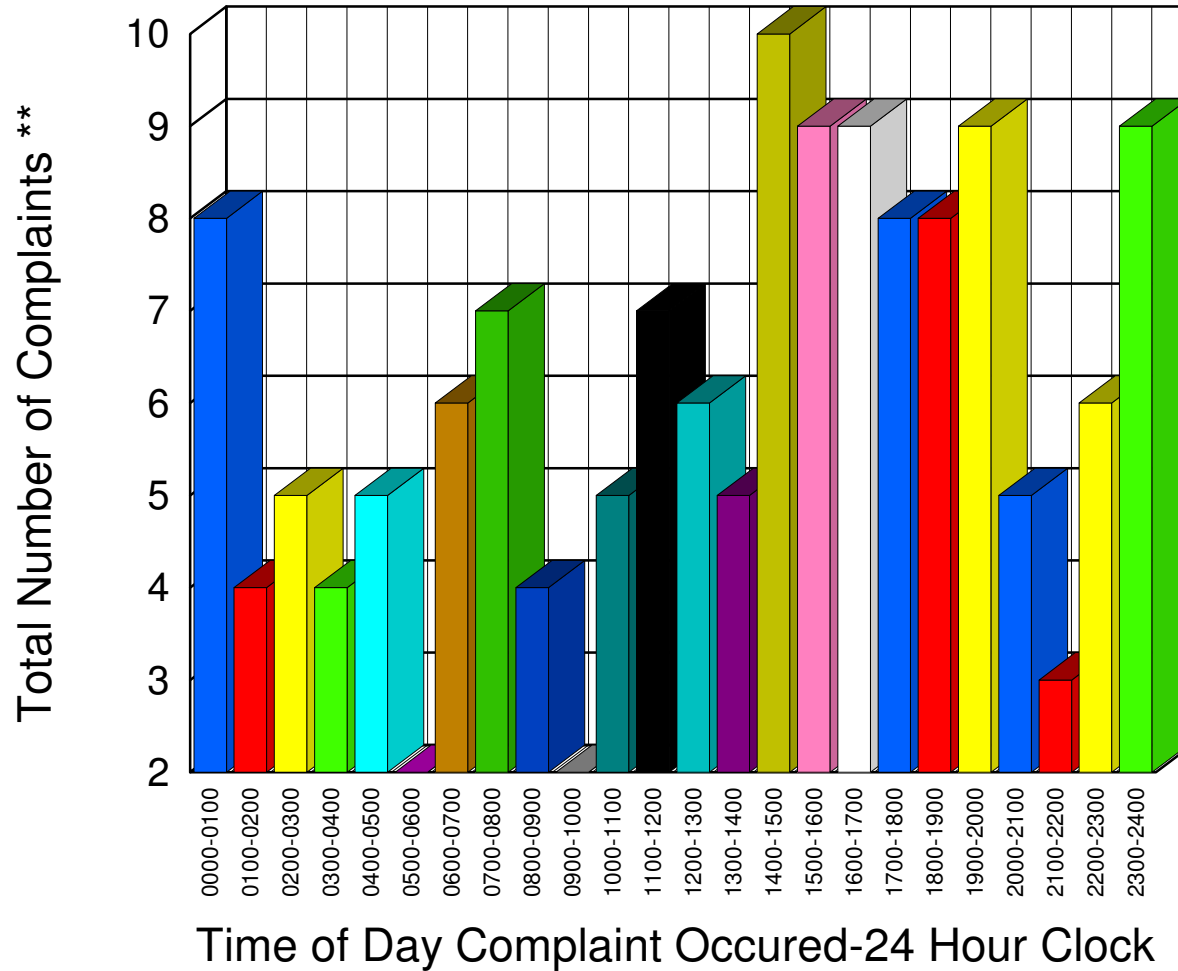
Total	3
-------	---

** Complaints taken by Muskegon Sheriff's Office

Muskegon County Sheriff's Office

Listing of Offense Reports - Lakewood Club and Dalton Township - 01/01/2008 00:13:59 to 01/31/2008 19:30:00

0000-0100	8
0100-0200	4
0200-0300	5
0300-0400	4
0400-0500	5
0500-0600	2
0600-0700	6
0700-0800	7
0800-0900	4
0900-1000	2
1000-1100	5
1100-1200	7
1200-1300	6
1300-1400	5
1400-1500	10
1500-1600	9
1600-1700	9
1700-1800	8
1800-1900	8
1900-2000	9
2000-2100	5
2100-2200	3
2200-2300	6
2300-2400	9



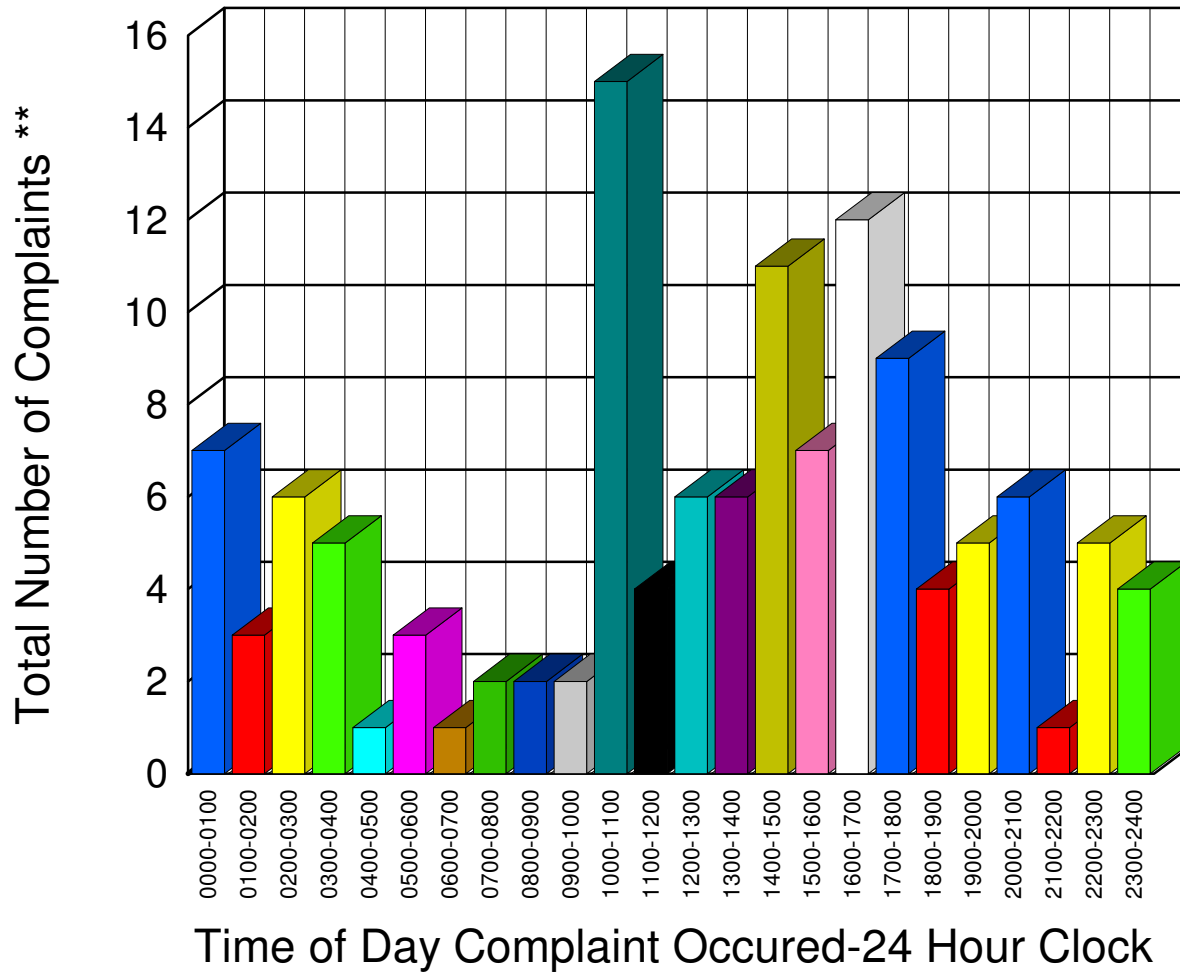
Total 146

** Complaints taken by Muskegon Sheriff's Office

Muskegon County Sheriff's Office

Listing of Offense Reports - Egelston Township - 01/01/2008 00:00:00 to 01/31/2008 23:59:59

0000-0100	7
0100-0200	3
0200-0300	6
0300-0400	5
0400-0500	1
0500-0600	3
0600-0700	1
0700-0800	2
0800-0900	2
0900-1000	2
1000-1100	15
1100-1200	4
1200-1300	6
1300-1400	6
1400-1500	11
1500-1600	7
1600-1700	12
1700-1800	9
1800-1900	4
1900-2000	5
2000-2100	6
2100-2200	1
2200-2300	5
2300-2400	4



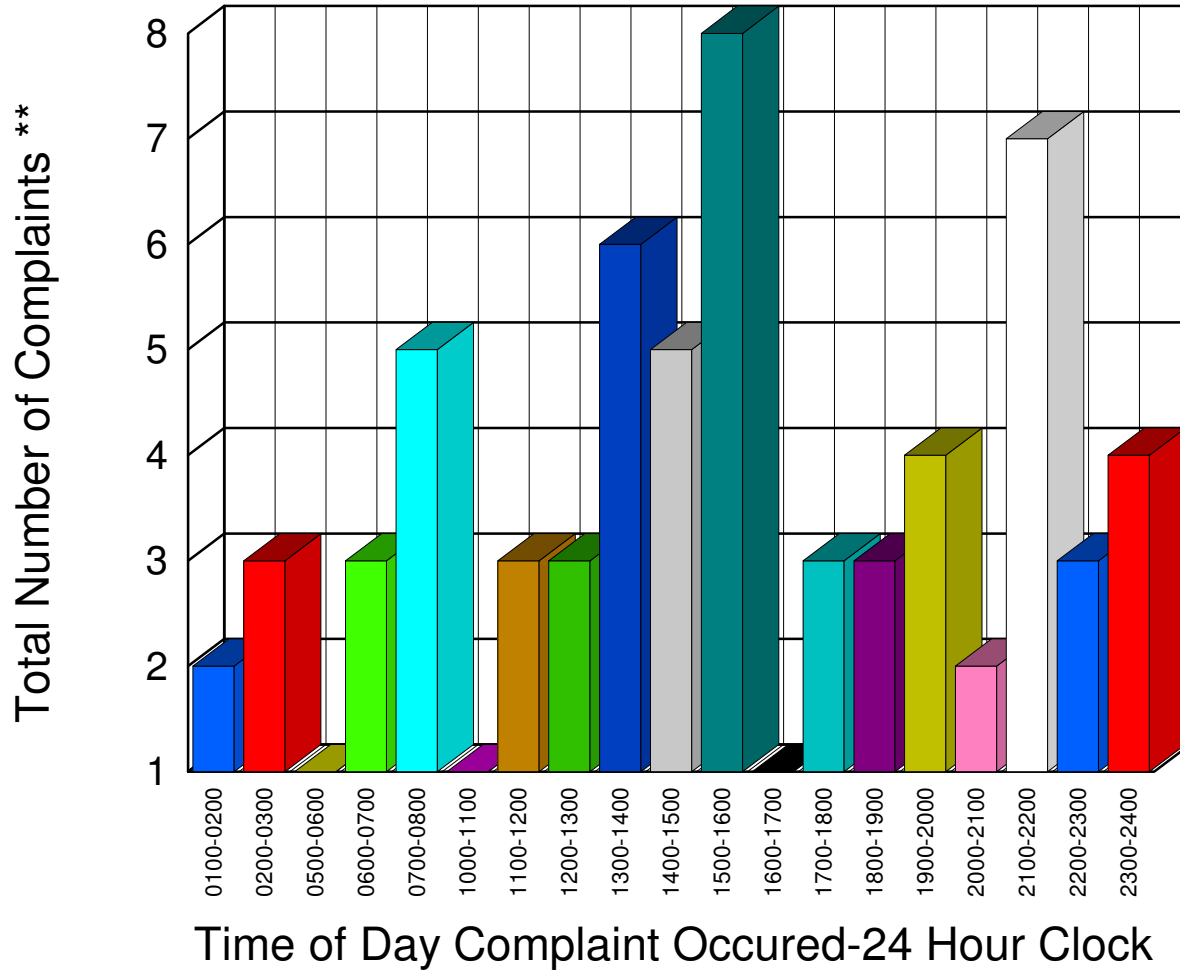
Total 127

** Complaints taken by Muskegon Sheriff's Office

Muskegon County Sheriff's Office

Listing of Offense Reports - Fruitland Township - 01/01/2008 06:09:00 to 01/31/2008 15:30:00

0100-0200	2
0200-0300	3
0500-0600	1
0600-0700	3
0700-0800	5
1000-1100	1
1100-1200	3
1200-1300	3
1300-1400	6
1400-1500	5
1500-1600	8
1600-1700	1
1700-1800	3
1800-1900	3
1900-2000	4
2000-2100	2
2100-2200	7
2200-2300	3
2300-2400	4



Total 67

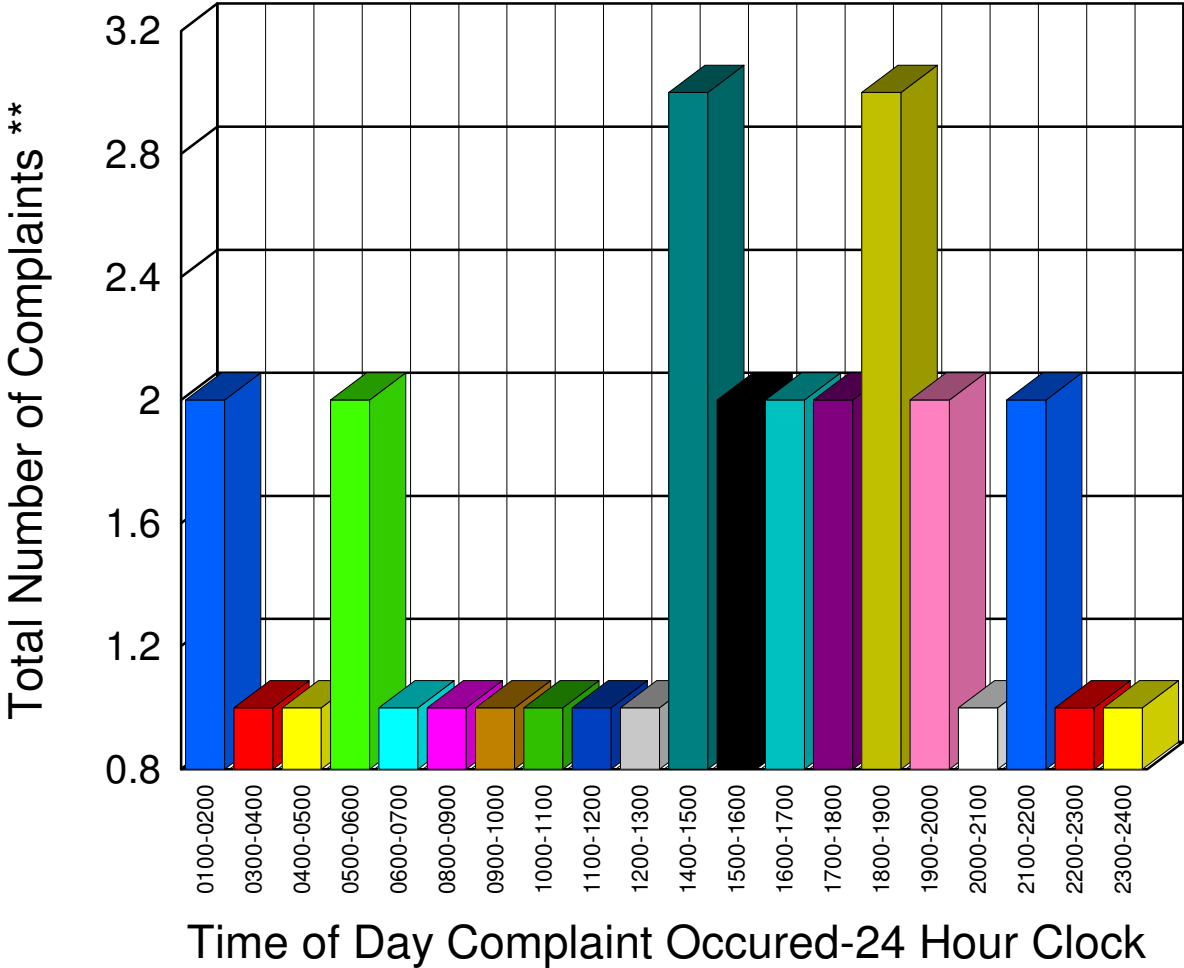
** Complaints taken by Muskegon Sheriff's Office

Muskegon County Sheriff's Office

Listing of Offense Reports - Holton Township - 01/02/2008 12:38:00 to 01/31/2008 20:00:00

0100-0200	2
0300-0400	1
0400-0500	1
0500-0600	2
0600-0700	1
0800-0900	1
0900-1000	1
1000-1100	1
1100-1200	1
1200-1300	1
1400-1500	3
1500-1600	2
1600-1700	2
1700-1800	2
1800-1900	3
1900-2000	2
2000-2100	1
2100-2200	2
2200-2300	1
2300-2400	1

Total 31

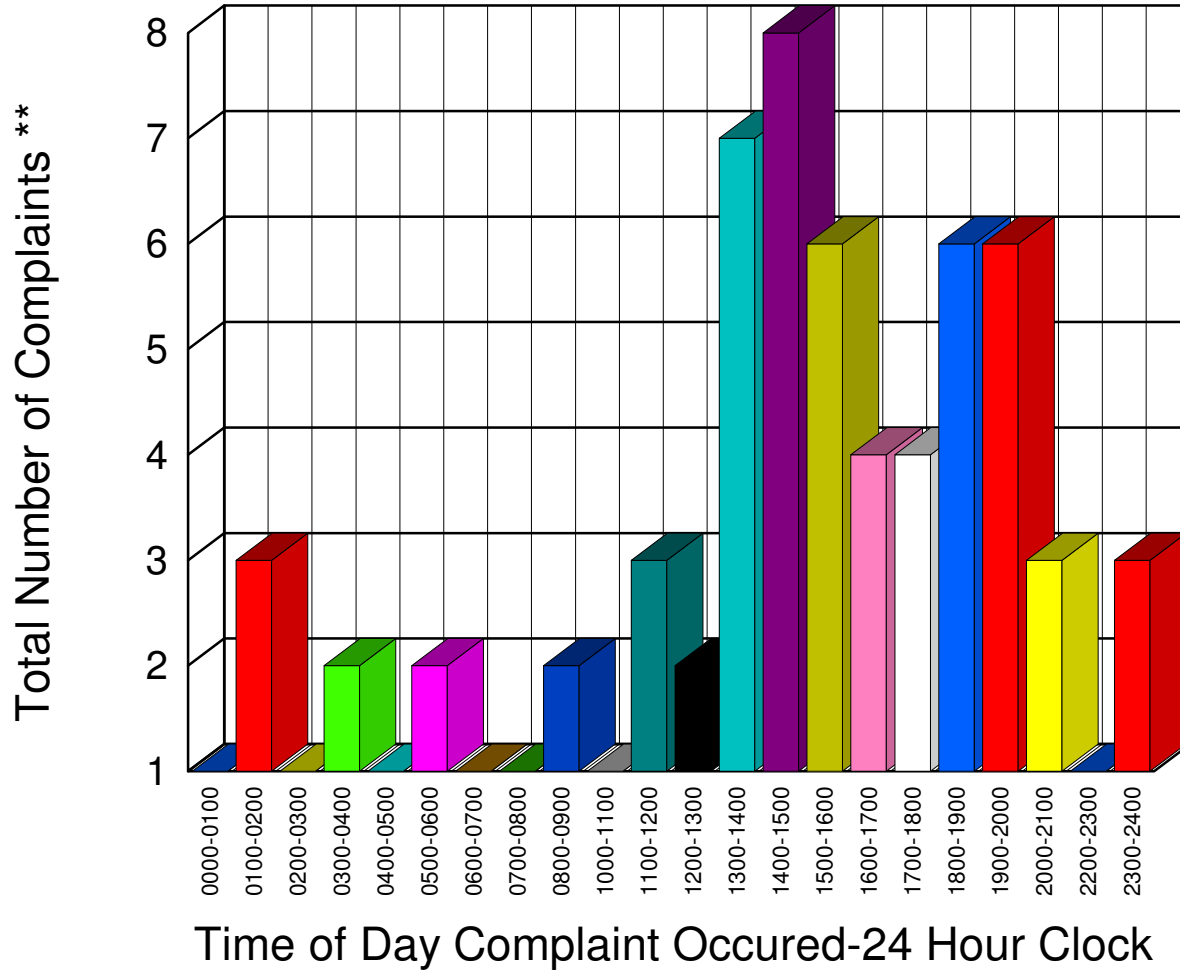


** Complaints taken by Muskegon Sheriff's Office

Muskegon County Sheriff's Office

Listing of Offense Reports - Laketon Township - 01/01/2008 04:11:59 to 01/31/2008 18:45:00

0000-0100	1
0100-0200	3
0200-0300	1
0300-0400	2
0400-0500	1
0500-0600	2
0600-0700	1
0700-0800	1
0800-0900	2
1000-1100	1
1100-1200	3
1200-1300	2
1300-1400	7
1400-1500	8
1500-1600	6
1600-1700	4
1700-1800	4
1800-1900	6
1900-2000	6
2000-2100	3
2200-2300	1
2300-2400	3



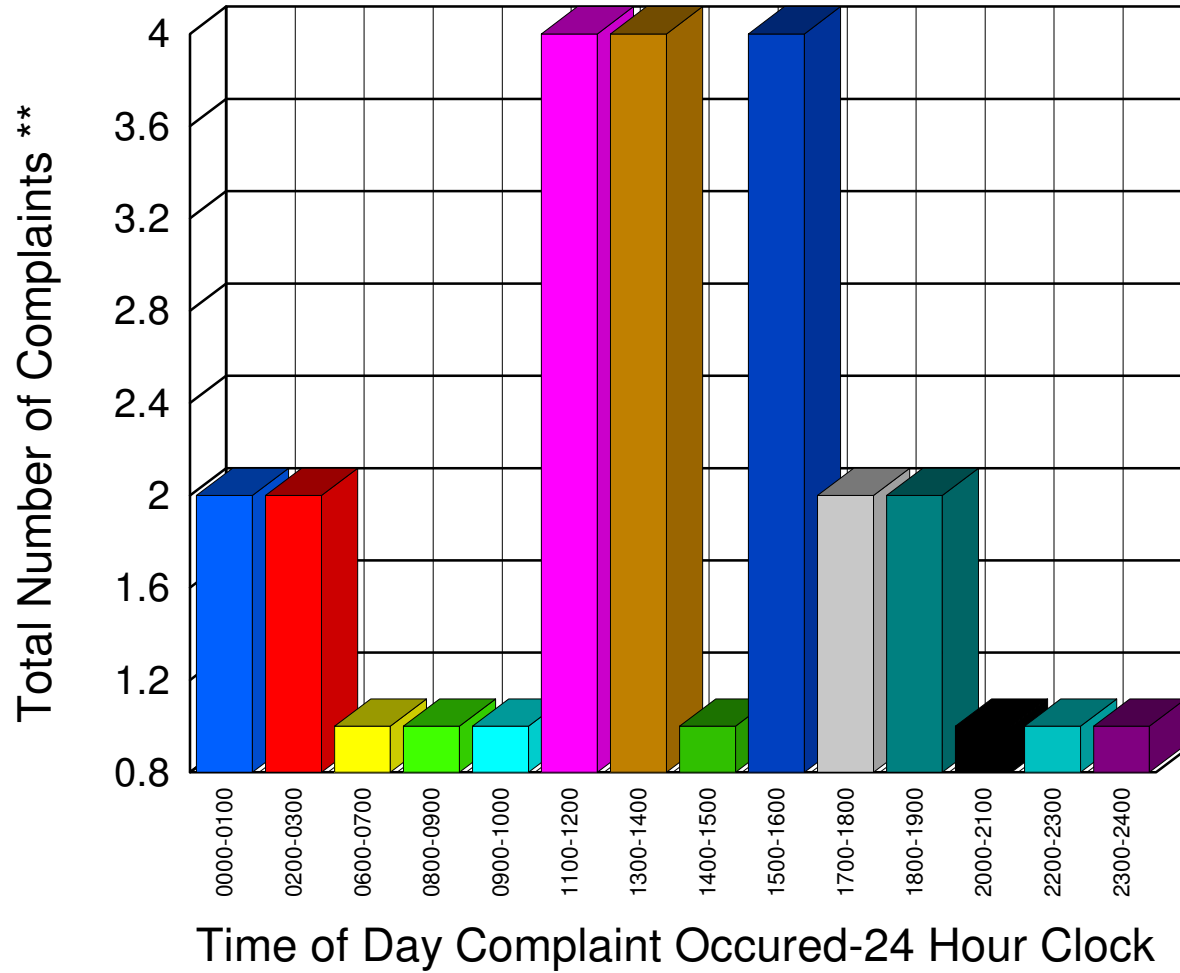
Total **68**

** Complaints taken by Muskegon Sheriff's Office

Muskegon County Sheriff's Office

Listing of Offense Reports - Montague Township - 01/01/2008 18:09:00 to 01/31/2008 22:37:59

0000-0100	2
0200-0300	2
0600-0700	1
0800-0900	1
0900-1000	1
1100-1200	4
1300-1400	4
1400-1500	1
1500-1600	4
1700-1800	2
1800-1900	2
2000-2100	1
2200-2300	1
2300-2400	1



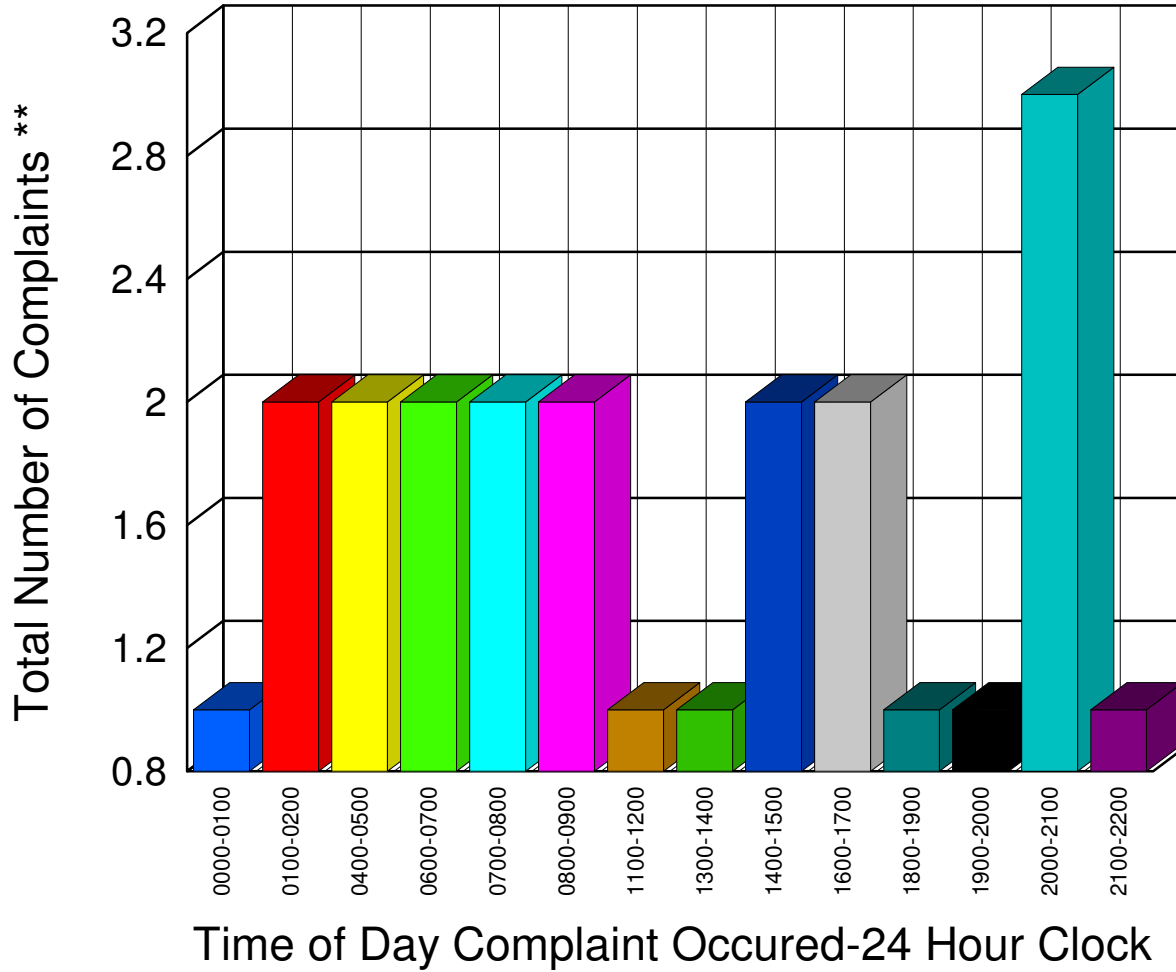
Total	27
-------	----

** Complaints taken by Muskegon Sheriff's Office

Muskegon County Sheriff's Office

Listing of Offense Reports - Moorland Township - 01/02/2008 07:35:00 to 01/30/2008 16:40:00

0000-0100	1
0100-0200	2
0400-0500	2
0600-0700	2
0700-0800	2
0800-0900	2
1100-1200	1
1300-1400	1
1400-1500	2
1600-1700	2
1800-1900	1
1900-2000	1
2000-2100	3
2100-2200	1



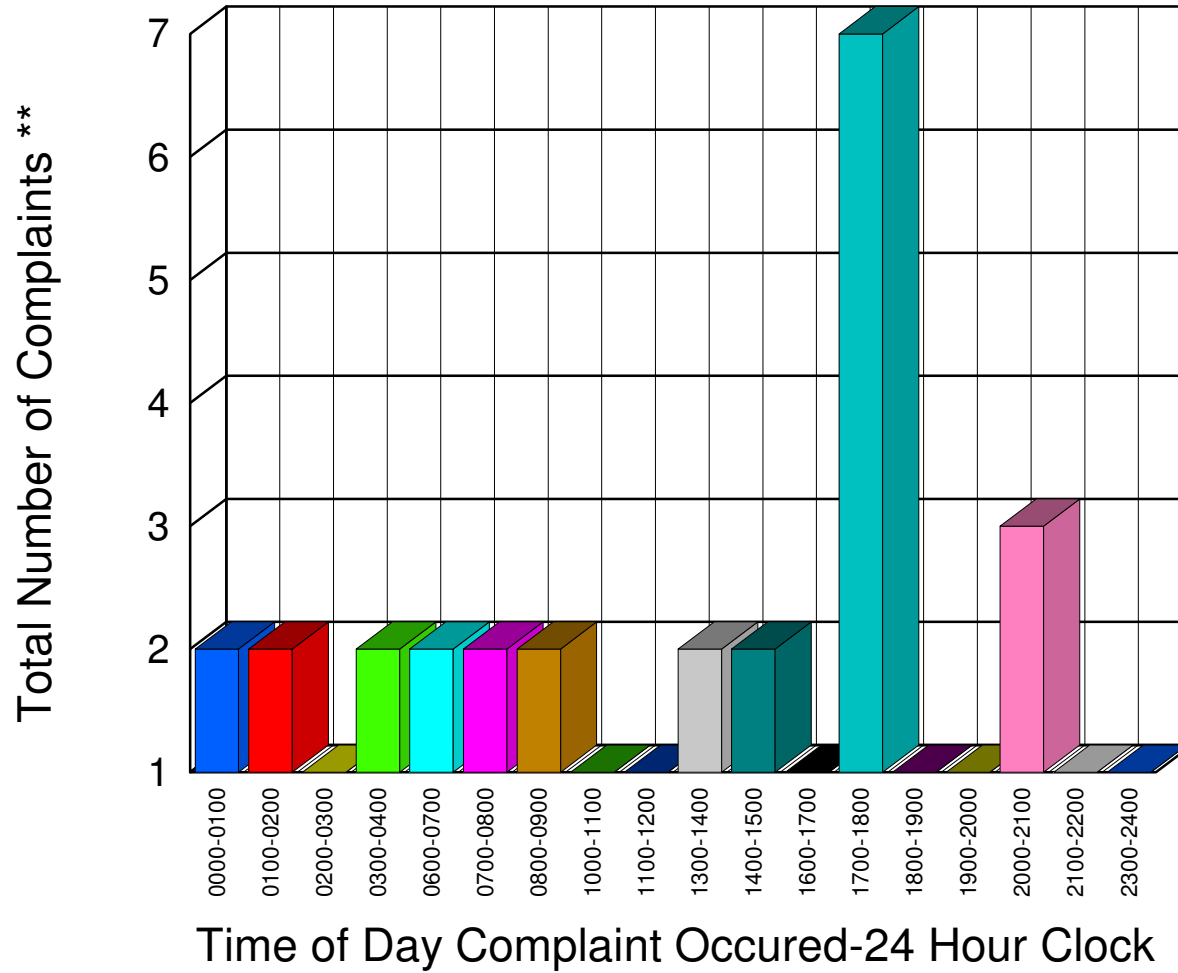
Total 23

** Complaints taken by Muskegon Sheriff's Office

Muskegon County Sheriff's Office

Listing of Offense Reports - Ravenna Village and Township - 01/01/2008 01:02:59 to 01/31/2008 08:30:00

0000-0100	2
0100-0200	2
0200-0300	1
0300-0400	2
0600-0700	2
0700-0800	2
0800-0900	2
1000-1100	1
1100-1200	1
1300-1400	2
1400-1500	2
1600-1700	1
1700-1800	7
1800-1900	1
1900-2000	1
2000-2100	3
2100-2200	1
2300-2400	1



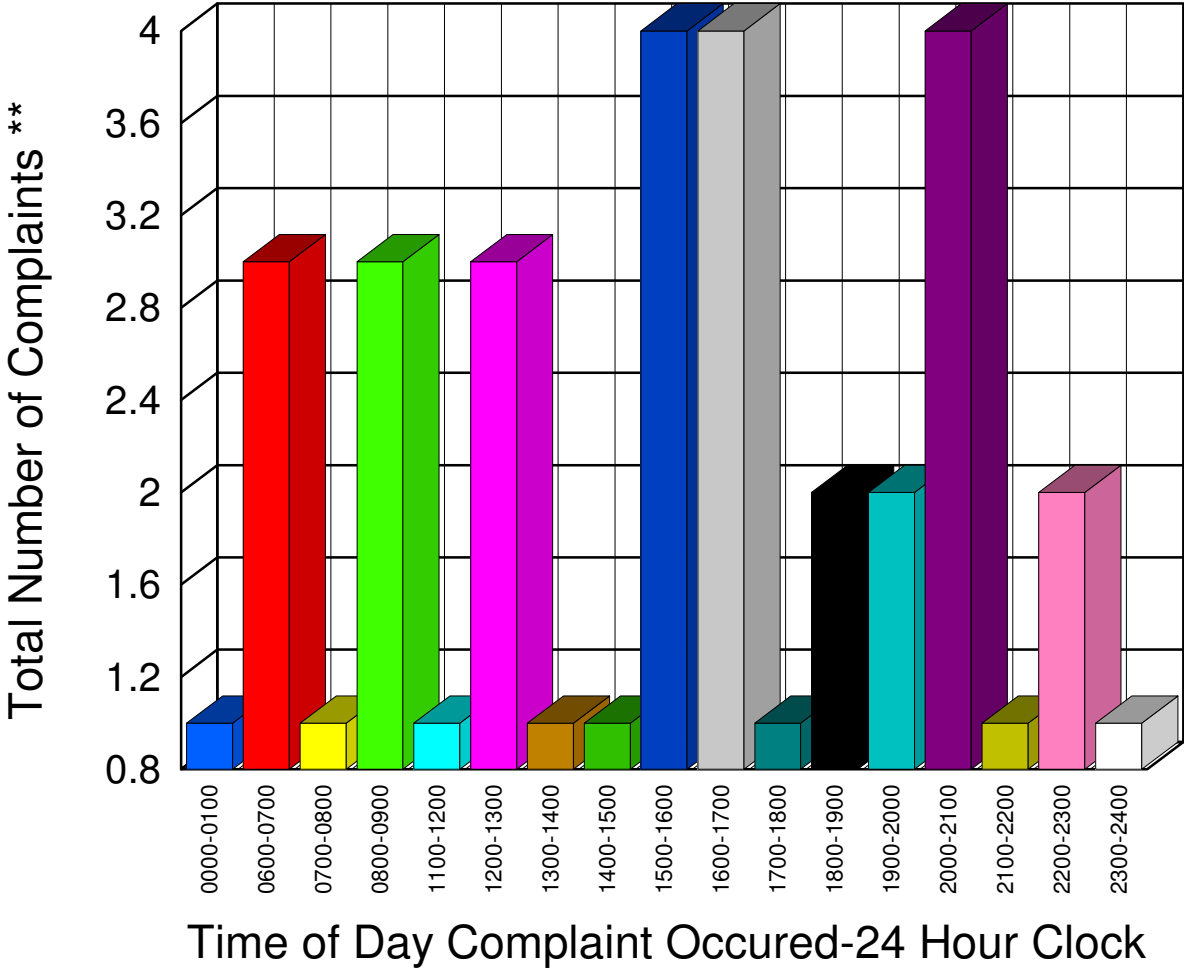
Total 34

** Complaints taken by Muskegon Sheriff's Office

Muskegon County Sheriff's Office

Listing of Offense Reports - Sullivan Township - 01/01/2008 12:05:00 to 01/29/2008 16:00:00

0000-0100	1
0600-0700	3
0700-0800	1
0800-0900	3
1100-1200	1
1200-1300	3
1300-1400	1
1400-1500	1
1500-1600	4
1600-1700	4
1700-1800	1
1800-1900	2
1900-2000	2
2000-2100	4
2100-2200	1
2200-2300	2
2300-2400	1



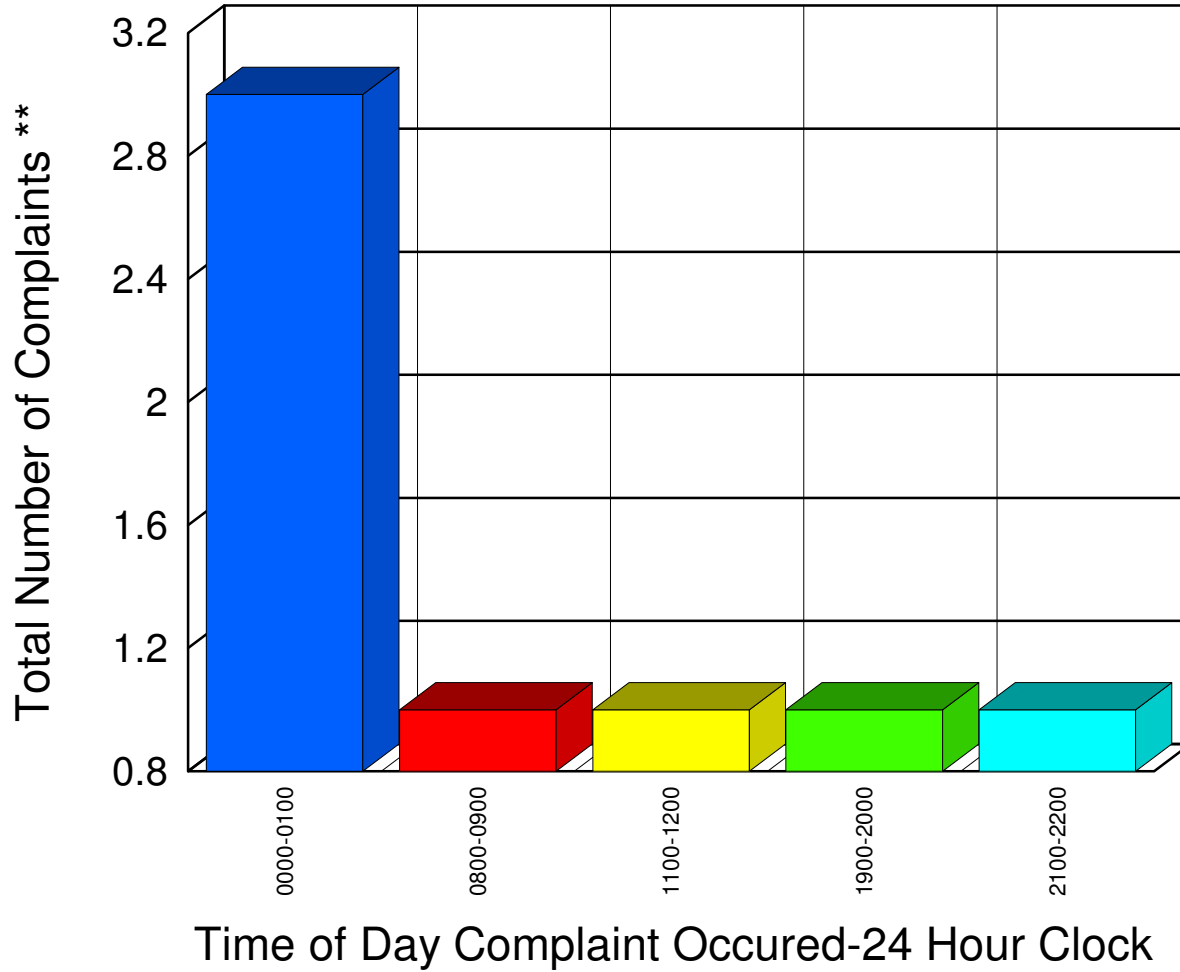
Total 35

** Complaints taken by Muskegon Sheriff's Office

Muskegon County Sheriff's Office

Listing of Offense Reports - White River Township - 01/01/2008 11:59:57 to 01/31/2008 19:30:00

<u>0000-0100</u>	<u>3</u>
<u>0800-0900</u>	<u>1</u>
<u>1100-1200</u>	<u>1</u>
<u>1900-2000</u>	<u>1</u>
<u>2100-2200</u>	<u>1</u>



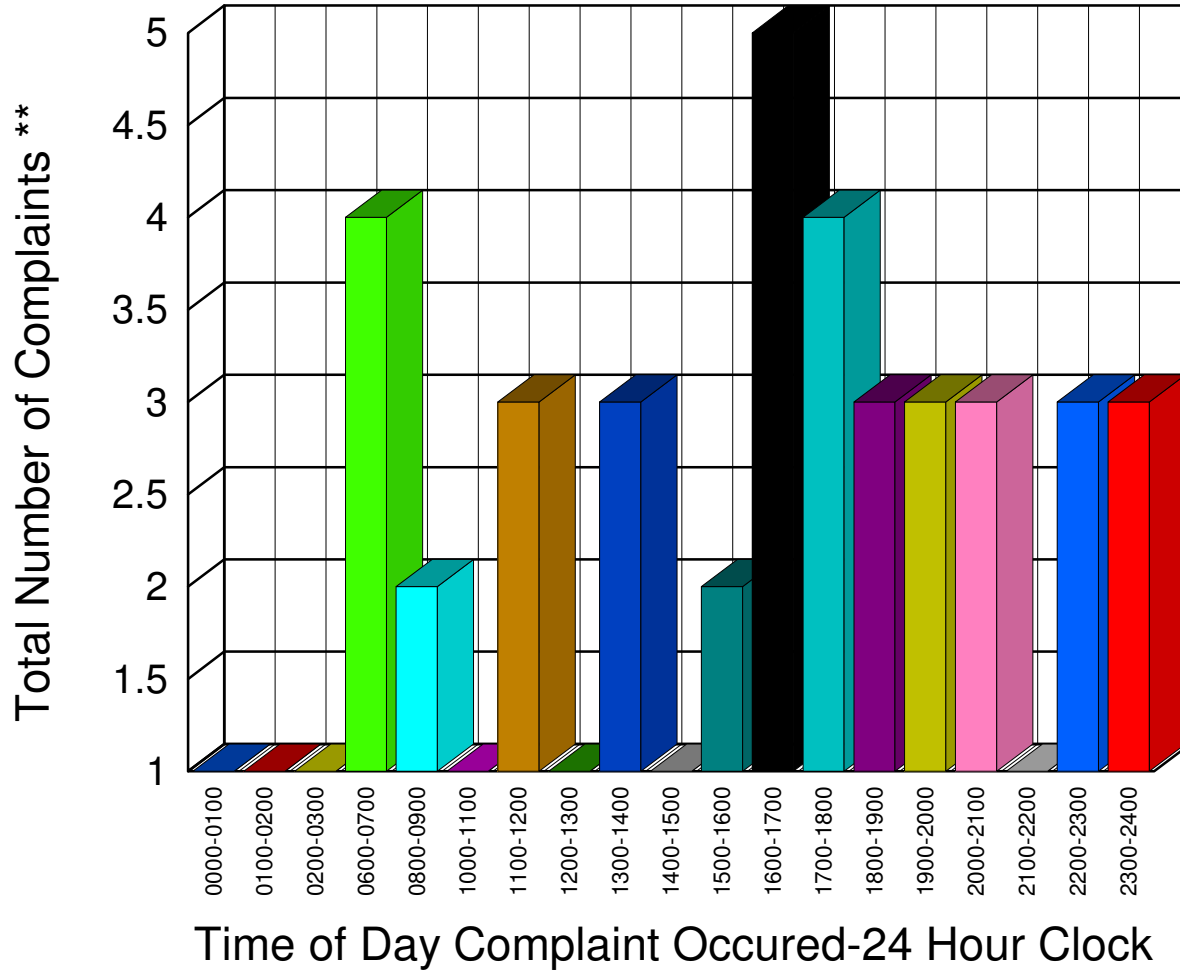
Total	7
-------	---

** Complaints taken by Muskegon Sheriff's Office

Muskegon County Sheriff's Office

Listing of Offense Reports - Whitehall Township - 01/01/2008 13:15:00 to 01/31/2008 20:00:00

0000-0100	1
0100-0200	1
0200-0300	1
0600-0700	4
0800-0900	2
1000-1100	1
1100-1200	3
1200-1300	1
1300-1400	3
1400-1500	1
1500-1600	2
1600-1700	5
1700-1800	4
1800-1900	3
1900-2000	3
2000-2100	3
2100-2200	1
2200-2300	3
2300-2400	3



Total 45

** Complaints taken by Muskegon Sheriff's Office