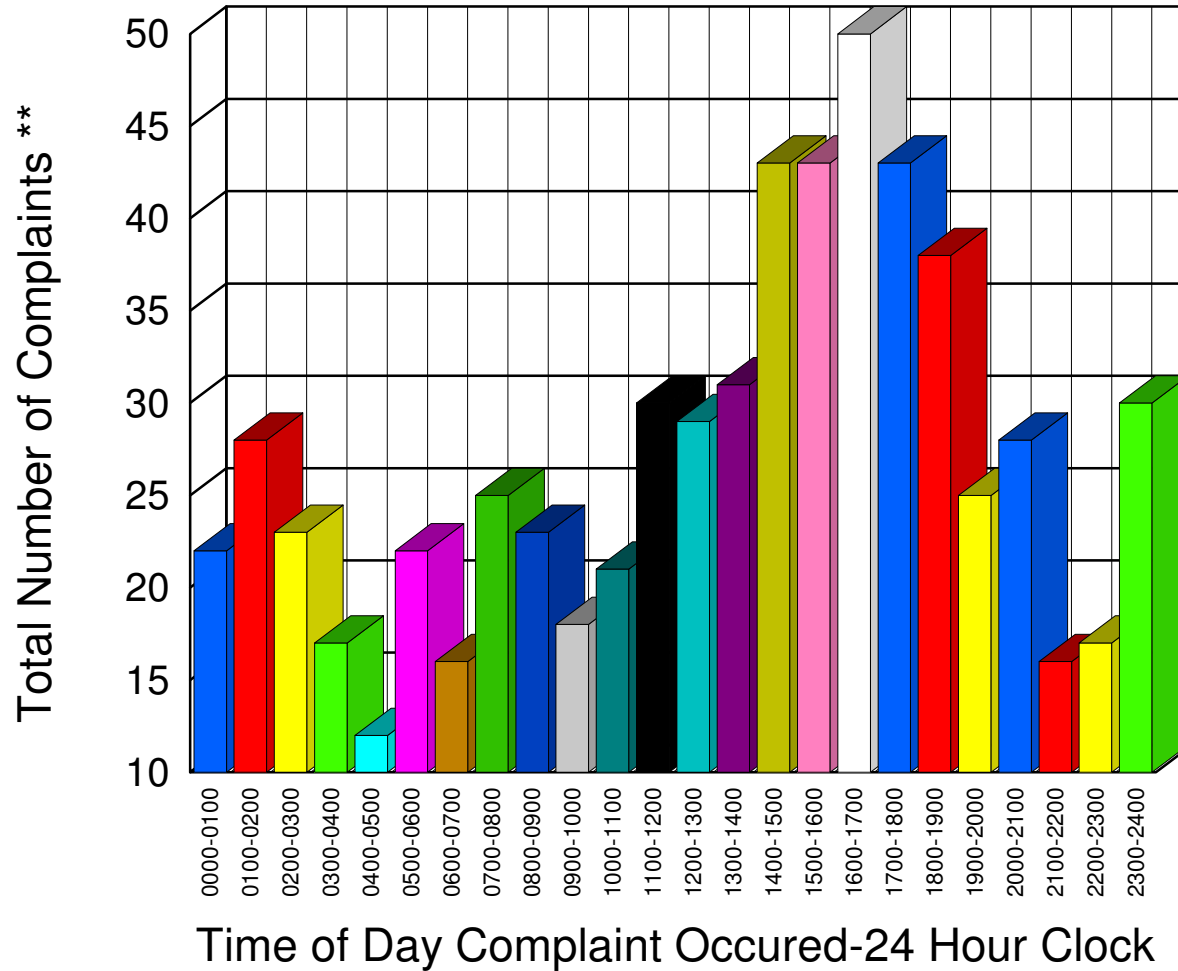


Muskegon County Sheriff's Office

Listing of Offense Reports-- 01/01/2010 00:12:08 to 01/31/2010 23:22:16

0000-0100	22
0100-0200	28
0200-0300	23
0300-0400	17
0400-0500	12
0500-0600	22
0600-0700	16
0700-0800	25
0800-0900	23
0900-1000	18
1000-1100	21
1100-1200	30
1200-1300	29
1300-1400	31
1400-1500	43
1500-1600	43
1600-1700	50
1700-1800	43
1800-1900	38
1900-2000	25
2000-2100	28
2100-2200	16
2200-2300	17
2300-2400	30



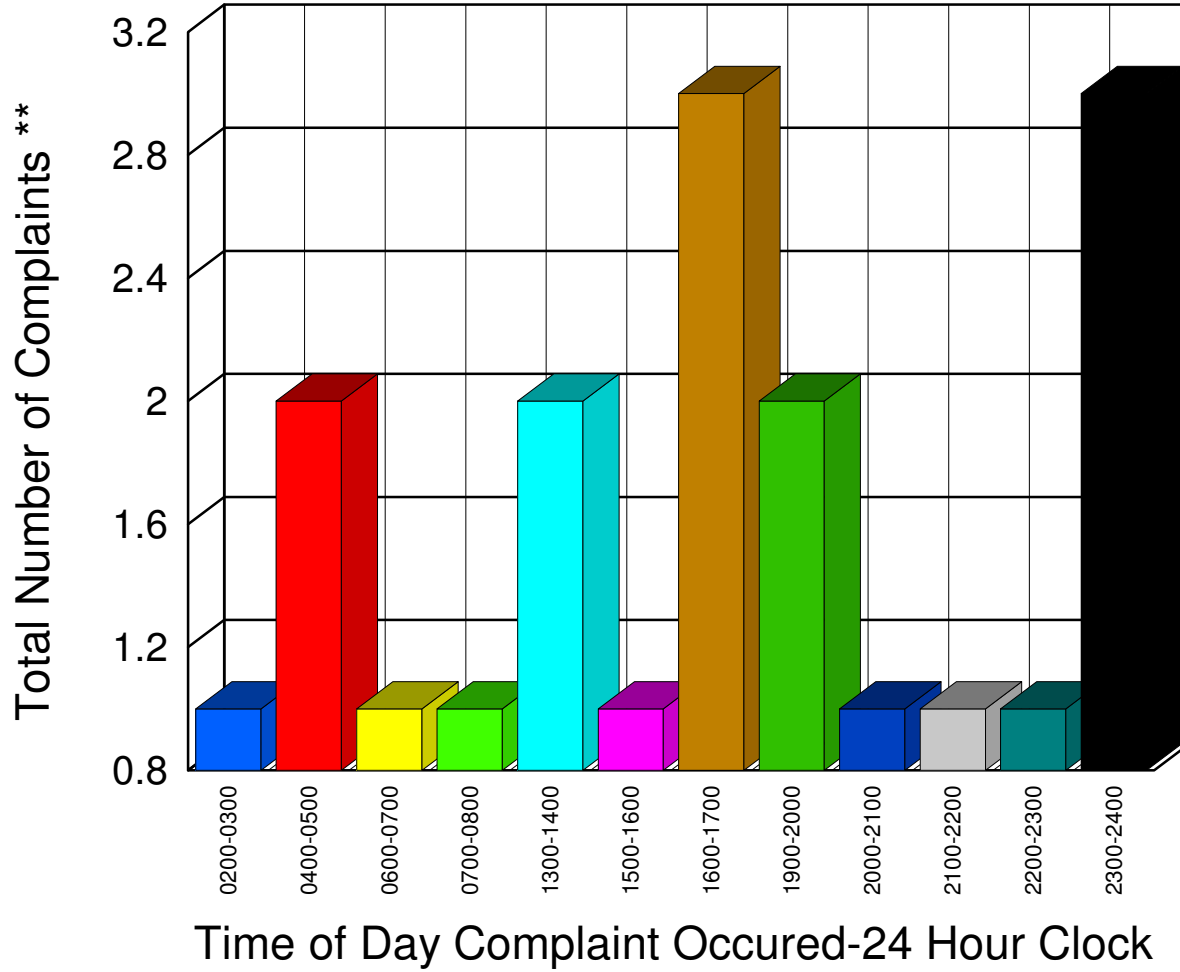
Total 650

** Complaints taken by Muskegon Sheriff's Office

Muskegon County Sheriff's Office

Listing of Offense Reports - Blue Lake Township - 01/05/2010 19:37:52 to 01/30/2010 23:22:08

<u>0200-0300</u>	<u>1</u>
<u>0400-0500</u>	<u>2</u>
<u>0600-0700</u>	<u>1</u>
<u>0700-0800</u>	<u>1</u>
<u>1300-1400</u>	<u>2</u>
<u>1500-1600</u>	<u>1</u>
<u>1600-1700</u>	<u>3</u>
<u>1900-2000</u>	<u>2</u>
<u>2000-2100</u>	<u>1</u>
<u>2100-2200</u>	<u>1</u>
<u>2200-2300</u>	<u>1</u>
<u>2300-2400</u>	<u>3</u>



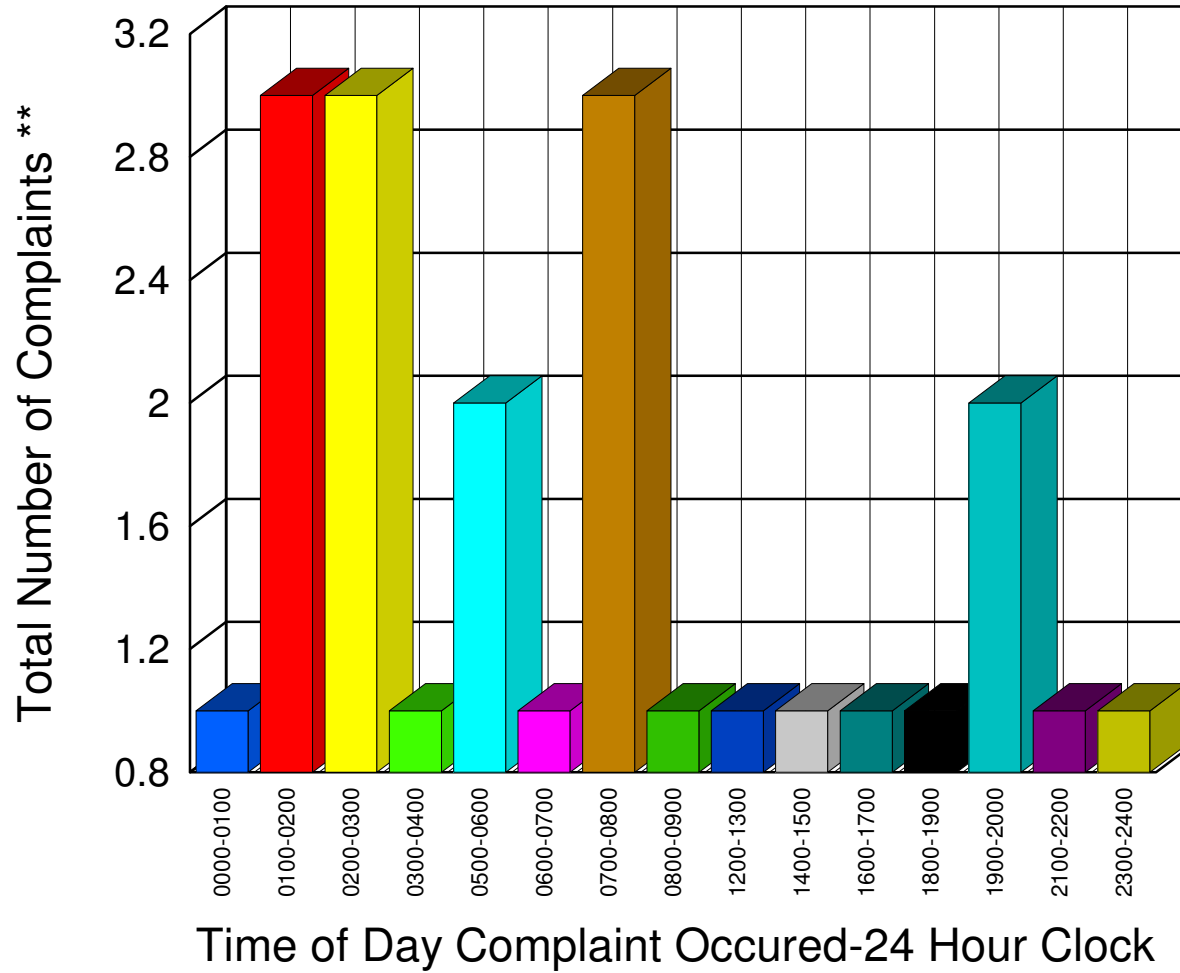
Total 19

** Complaints taken by Muskegon Sheriff's Office

Muskegon County Sheriff's Office

Listing of Offense Reports - Casnovia Village and Township - 01/01/2010 07:20:09 to 01/30/2010 12:48:28

0000-0100	1
0100-0200	3
0200-0300	3
0300-0400	1
0500-0600	2
0600-0700	1
0700-0800	3
0800-0900	1
1200-1300	1
1400-1500	1
1600-1700	1
1800-1900	1
1900-2000	2
2100-2200	1
2300-2400	1



Total 23

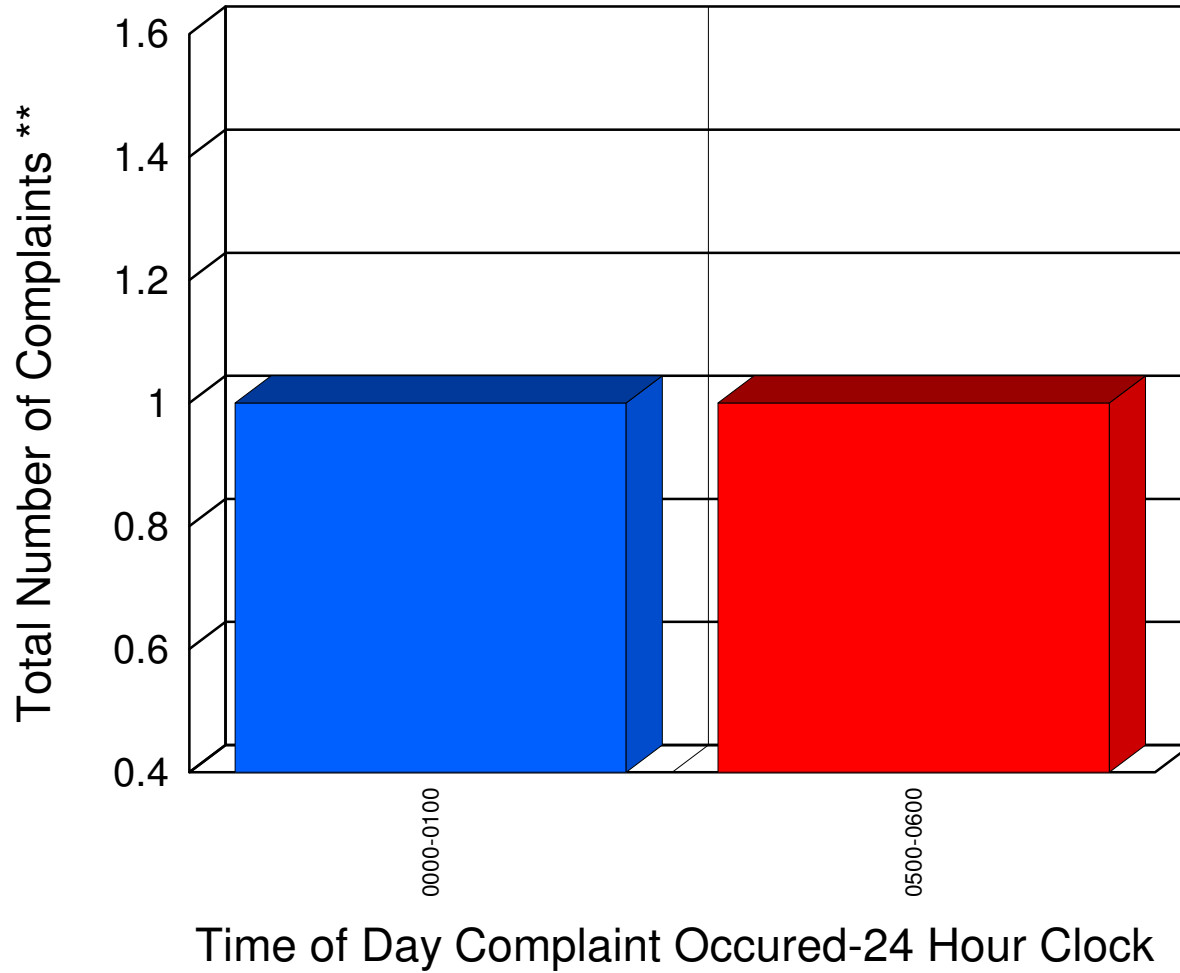
** Complaints taken by Muskegon Sheriff's Office

Muskegon County Sheriff's Office

Listing of Offense Reports - Cedar Creek Township - 01/15/2010 05:27:45 to 01/16/2010 00:19:10

0000-0100 1

0500-0600 1



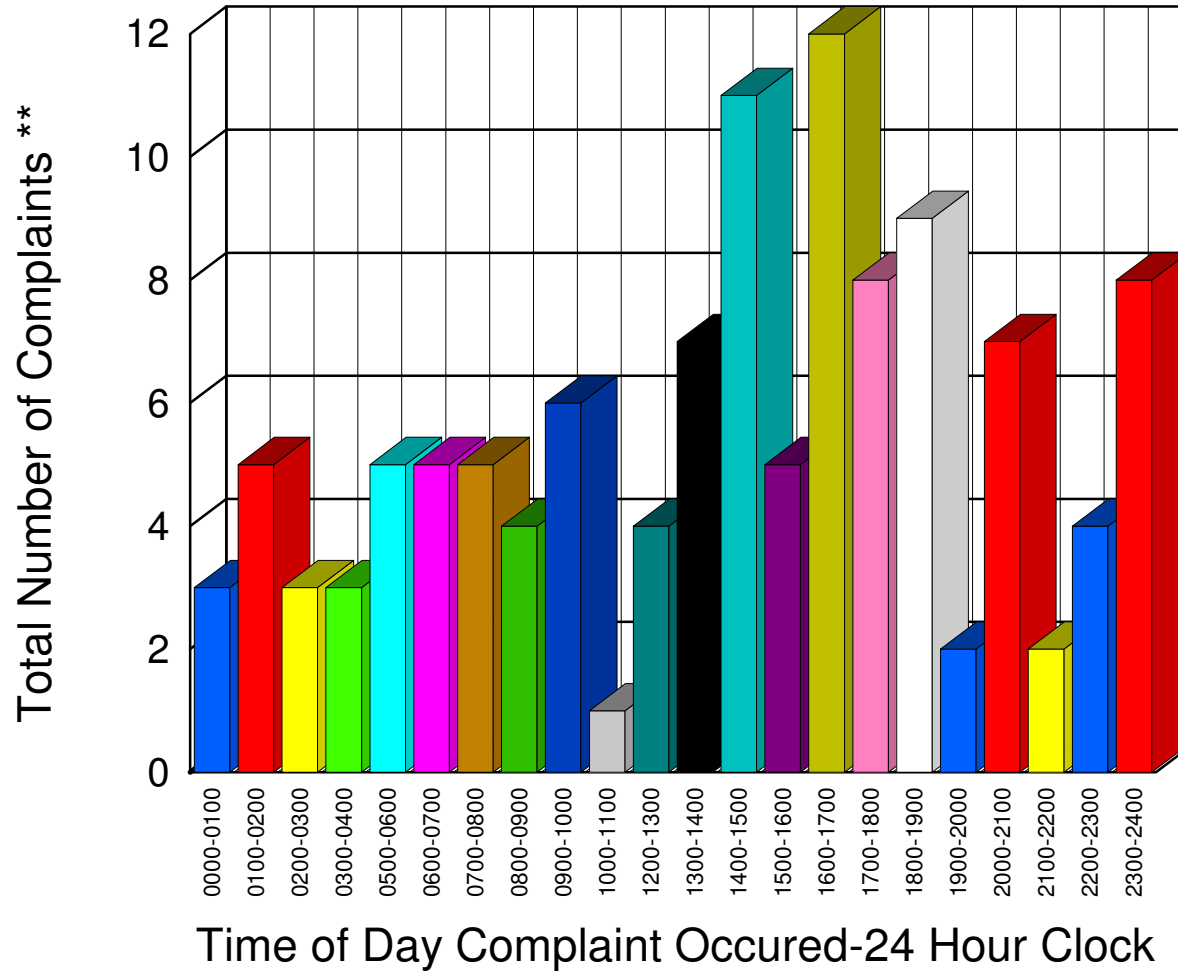
Total 2

** Complaints taken by Muskegon Sheriff's Office

Muskegon County Sheriff's Office

Listing of Offense Reports - Lakewood Club and Dalton Township - 01/01/2010 00:59:26 to 01/31/2010 23:22:16

0000-0100	3
0100-0200	5
0200-0300	3
0300-0400	3
0500-0600	5
0600-0700	5
0700-0800	5
0800-0900	4
0900-1000	6
1000-1100	1
1200-1300	4
1300-1400	7
1400-1500	11
1500-1600	5
1600-1700	12
1700-1800	8
1800-1900	9
1900-2000	2
2000-2100	7
2100-2200	2
2200-2300	4
2300-2400	8



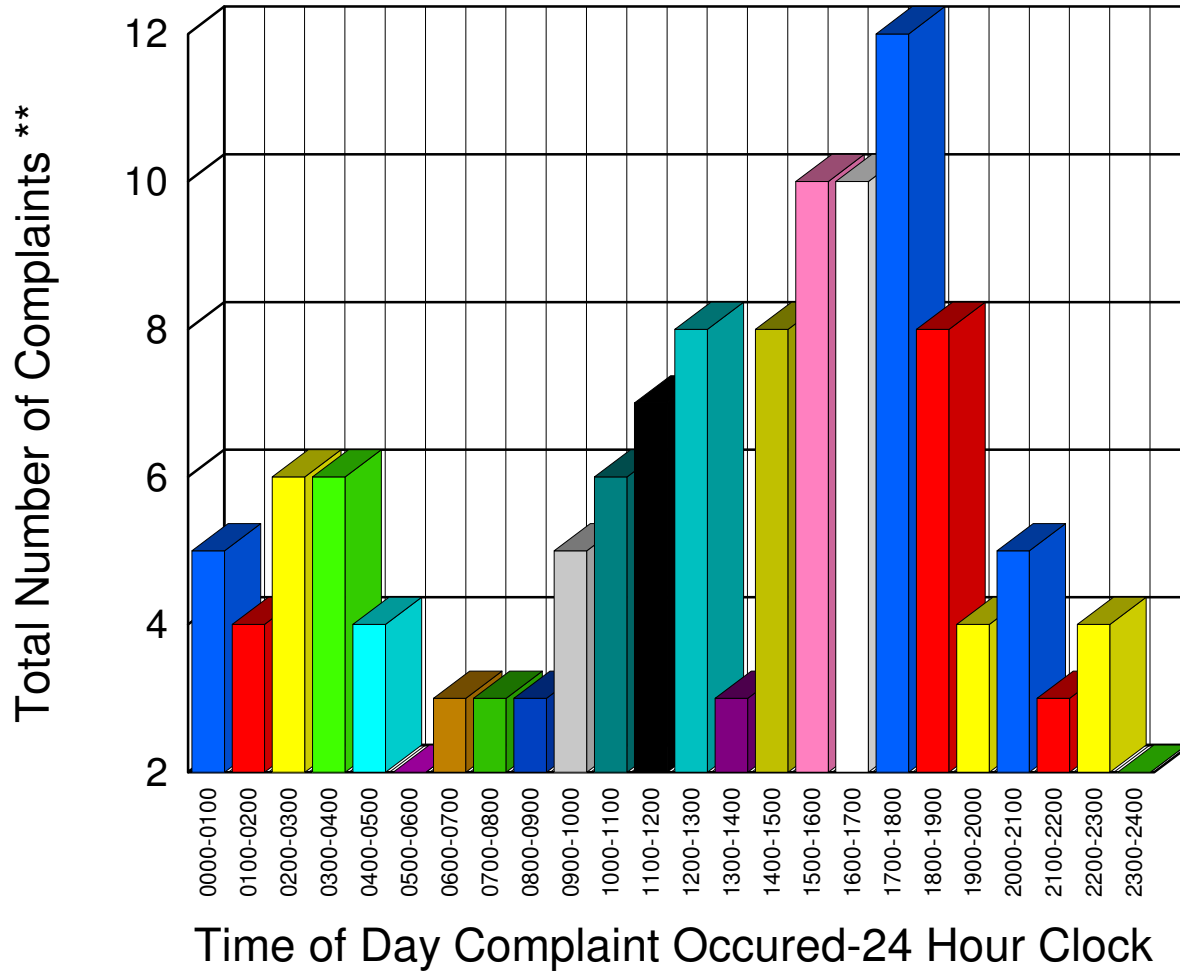
Total 119

** Complaints taken by Muskegon Sheriff's Office

Muskegon County Sheriff's Office

Listing of Offense Reports - Egelston Township - 01/01/2010 00:12:08 to 01/30/2010 20:32:46

0000-0100	5
0100-0200	4
0200-0300	6
0300-0400	6
0400-0500	4
0500-0600	2
0600-0700	3
0700-0800	3
0800-0900	3
0900-1000	5
1000-1100	6
1100-1200	7
1200-1300	8
1300-1400	3
1400-1500	8
1500-1600	10
1600-1700	10
1700-1800	12
1800-1900	8
1900-2000	4
2000-2100	5
2100-2200	3
2200-2300	4
2300-2400	2



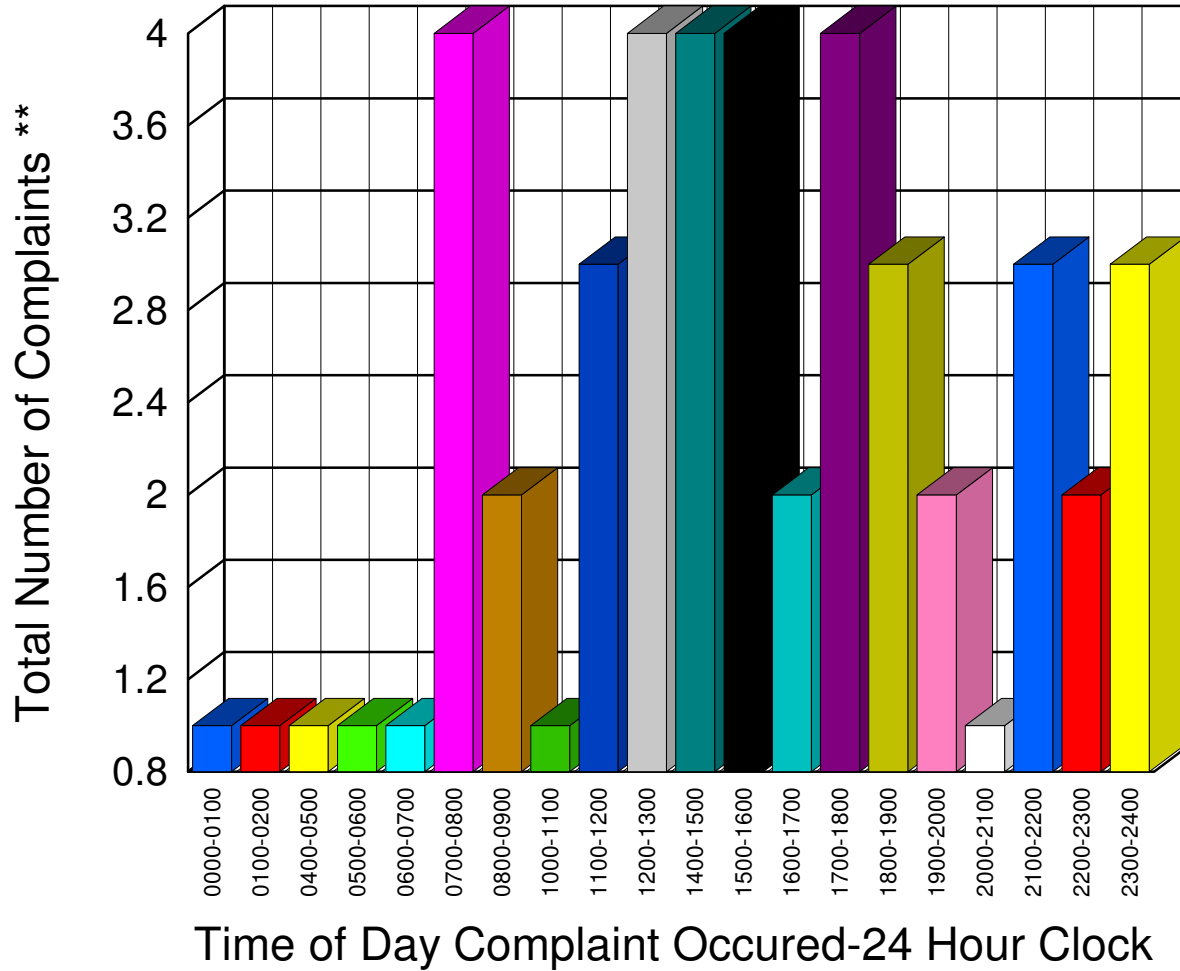
Total 131

** Complaints taken by Muskegon Sheriff's Office

Muskegon County Sheriff's Office

Listing of Offense Reports - Fruitland Township - 01/01/2010 00:21:37 to 01/31/2010 21:09:02

0000-0100	1
0100-0200	1
0400-0500	1
0500-0600	1
0600-0700	1
0700-0800	4
0800-0900	2
1000-1100	1
1100-1200	3
1200-1300	4
1400-1500	4
1500-1600	4
1600-1700	2
1700-1800	4
1800-1900	3
1900-2000	2
2000-2100	1
2100-2200	3
2200-2300	2
2300-2400	3



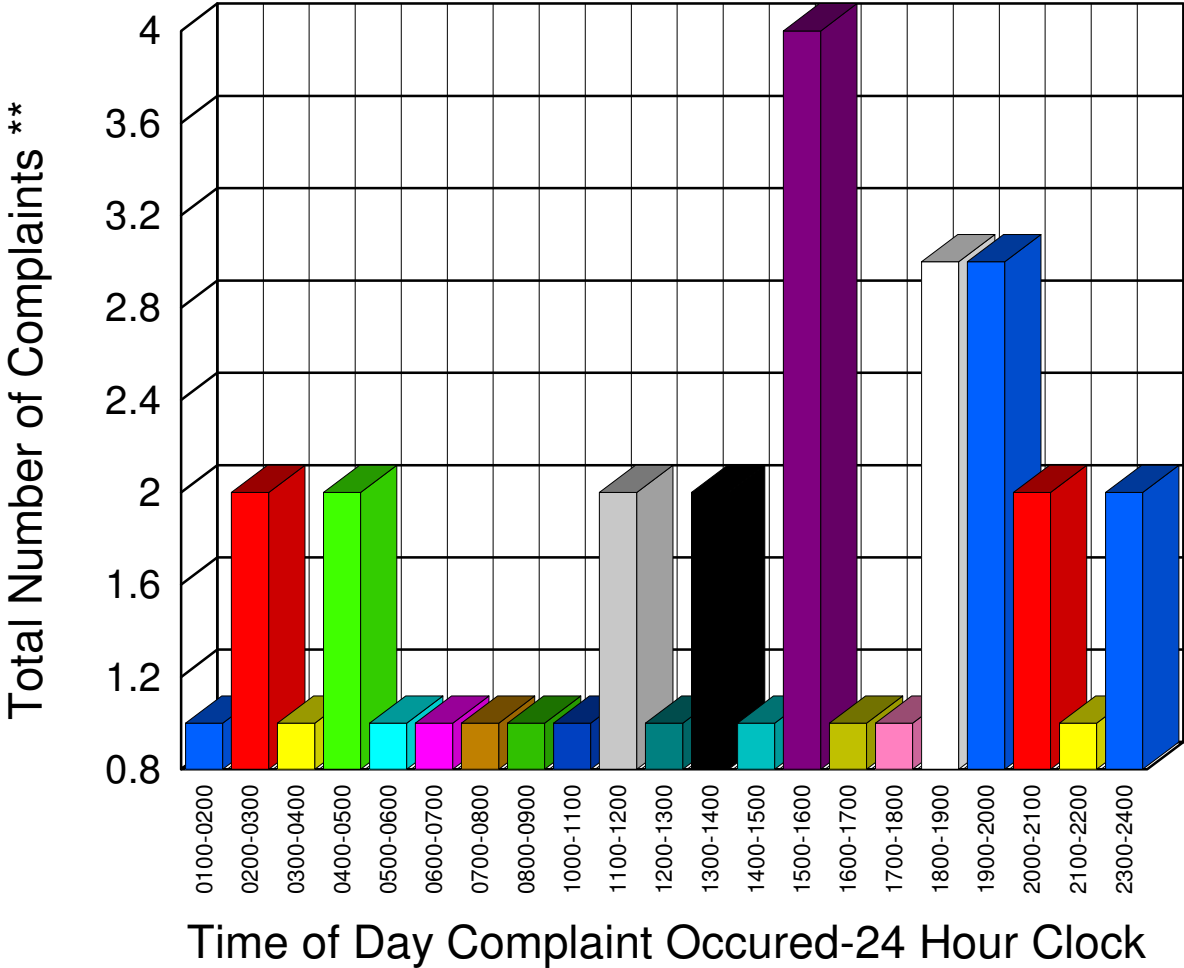
Total 47

** Complaints taken by Muskegon Sheriff's Office

Muskegon County Sheriff's Office

Listing of Offense Reports - Holton Township - 01/01/2010 05:49:24 to 01/31/2010 19:48:06

0100-0200	1
0200-0300	2
0300-0400	1
0400-0500	2
0500-0600	1
0600-0700	1
0700-0800	1
0800-0900	1
1000-1100	1
1100-1200	2
1200-1300	1
1300-1400	2
1400-1500	1
1500-1600	4
1600-1700	1
1700-1800	1
1800-1900	3
1900-2000	3
2000-2100	2
2100-2200	1
2300-2400	2



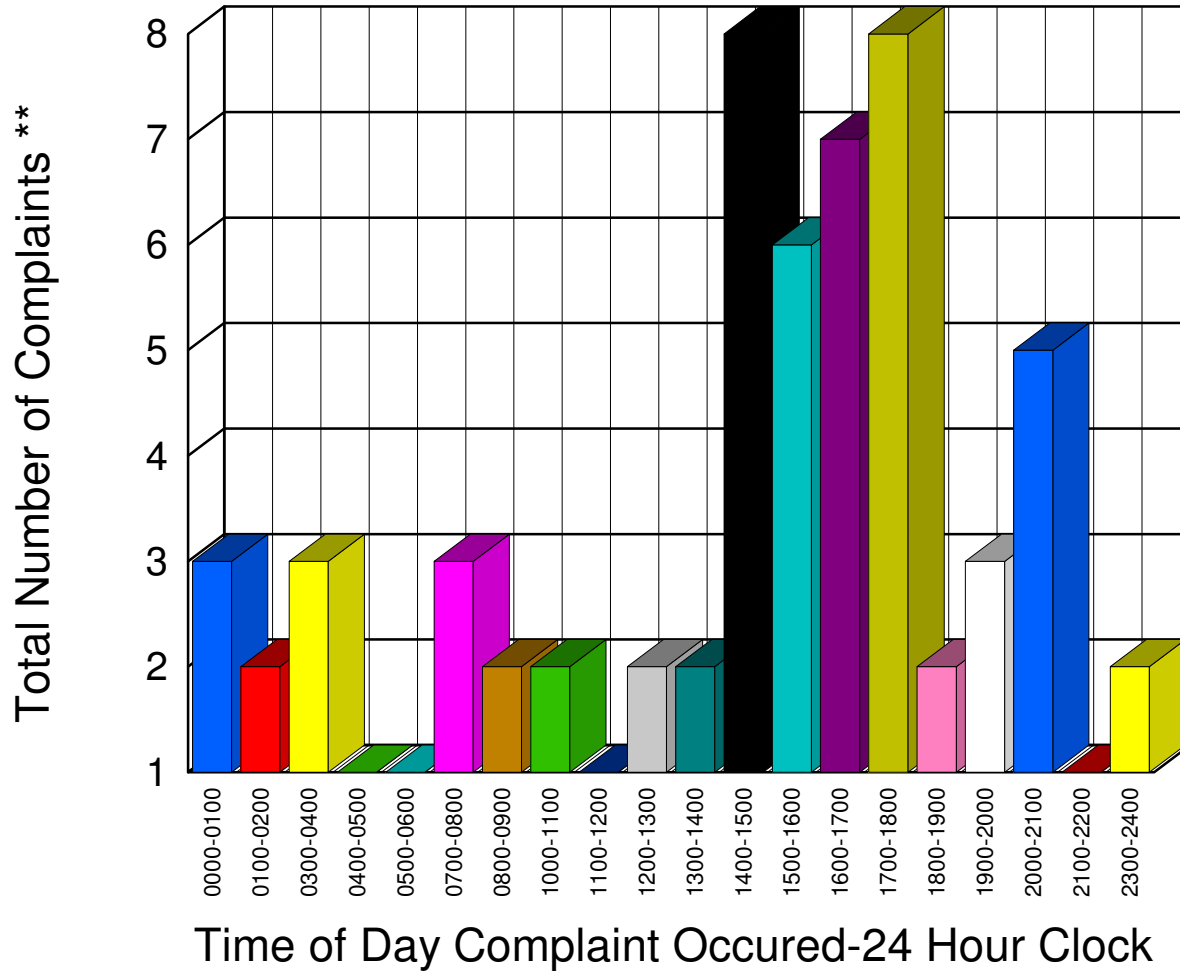
Total 34

** Complaints taken by Muskegon Sheriff's Office

Muskegon County Sheriff's Office

Listing of Offense Reports - Laketon Township - 01/01/2010 00:15:00 to 01/31/2010 17:21:00

0000-0100	3
0100-0200	2
0300-0400	3
0400-0500	1
0500-0600	1
0700-0800	3
0800-0900	2
1000-1100	2
1100-1200	1
1200-1300	2
1300-1400	2
1400-1500	8
1500-1600	6
1600-1700	7
1700-1800	8
1800-1900	2
1900-2000	3
2000-2100	5
2100-2200	1
2300-2400	2



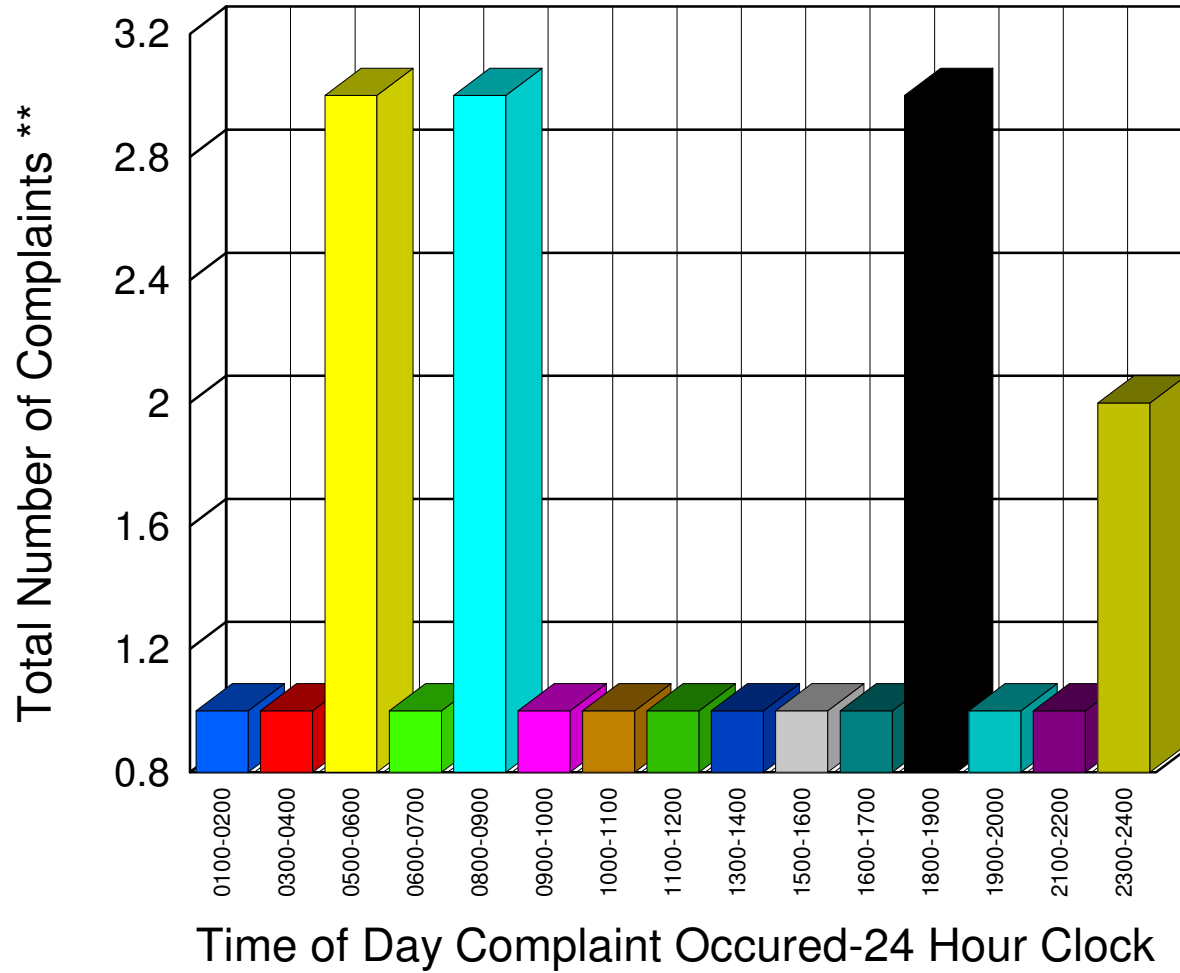
Total **64**

** Complaints taken by Muskegon Sheriff's Office

Muskegon County Sheriff's Office

Listing of Offense Reports - Montague Township - 01/01/2010 11:49:41 to 01/30/2010 08:44:17

0100-0200	1
0300-0400	1
0500-0600	3
0600-0700	1
0800-0900	3
0900-1000	1
1000-1100	1
1100-1200	1
1300-1400	1
1500-1600	1
1600-1700	1
1800-1900	3
1900-2000	1
2100-2200	1
2300-2400	2



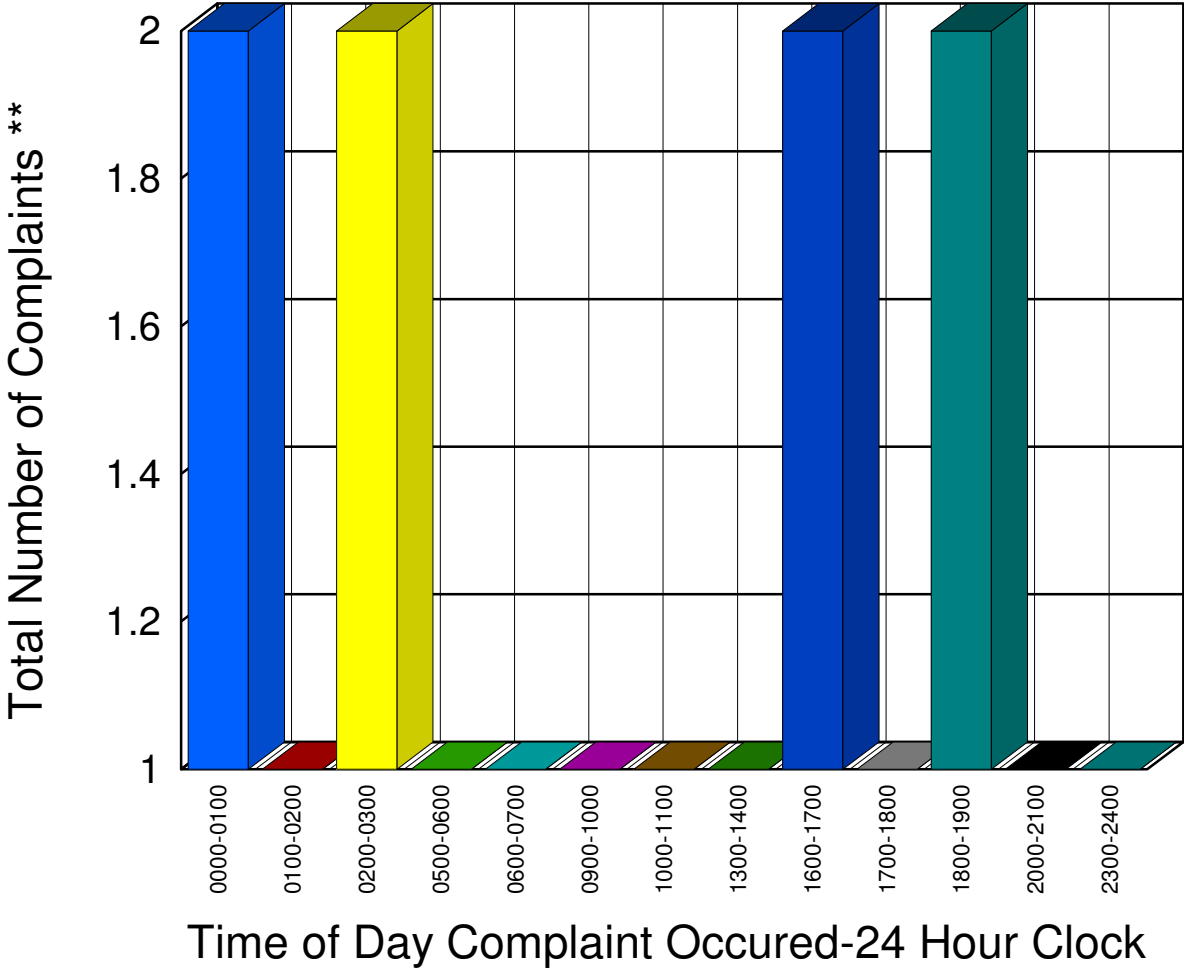
Total 22

** Complaints taken by Muskegon Sheriff's Office

Muskegon County Sheriff's Office

Listing of Offense Reports - Moorland Township - 01/01/2010 00:52:49 to 01/31/2010 00:30:00

0000-0100	2
0100-0200	1
0200-0300	2
0500-0600	1
0600-0700	1
0900-1000	1
1000-1100	1
1300-1400	1
1600-1700	2
1700-1800	1
1800-1900	2
2000-2100	1
2300-2400	1



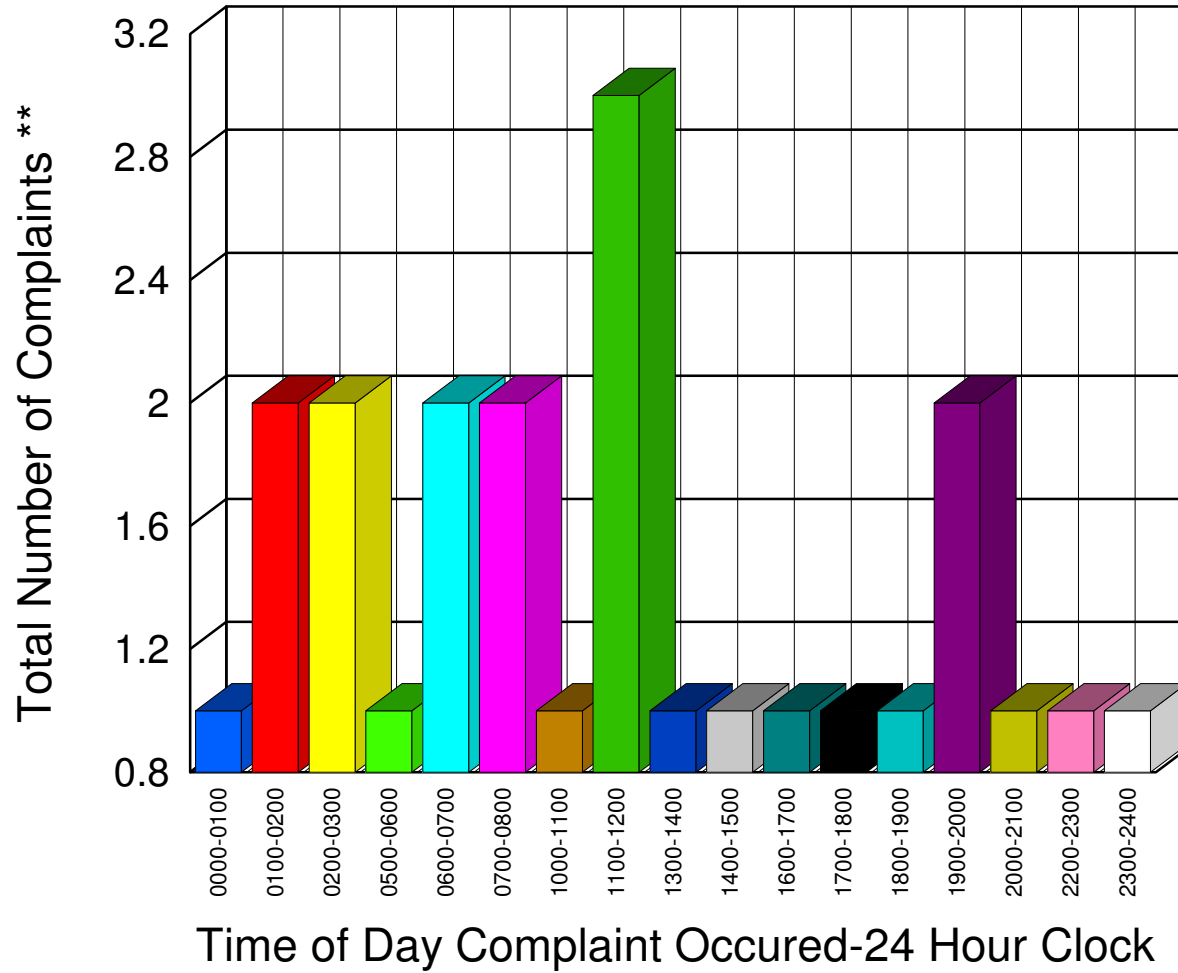
Total	17
-------	----

** Complaints taken by Muskegon Sheriff's Office

Muskegon County Sheriff's Office

Listing of Offense Reports - Ravenna Village and Township - 01/03/2010 17:40:35 to 01/27/2010 23:00:00

0000-0100	1
0100-0200	2
0200-0300	2
0500-0600	1
0600-0700	2
0700-0800	2
1000-1100	1
1100-1200	3
1300-1400	1
1400-1500	1
1600-1700	1
1700-1800	1
1800-1900	1
1900-2000	2
2000-2100	1
2200-2300	1
2300-2400	1



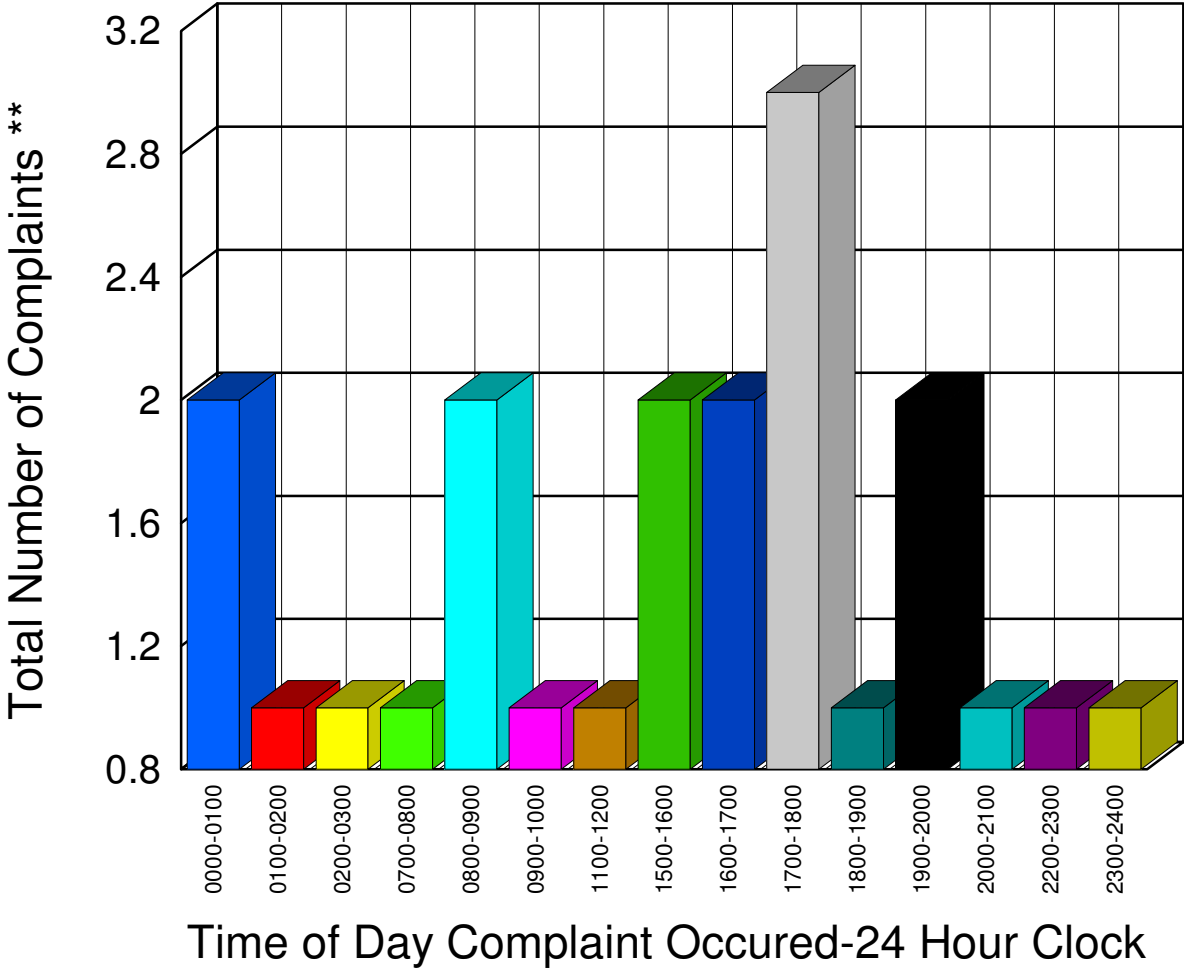
Total 24

** Complaints taken by Muskegon Sheriff's Office

Muskegon County Sheriff's Office

Listing of Offense Reports - Sullivan Township - 01/02/2010 19:55:33 to 01/29/2010 08:09:36

0000-0100	2
0100-0200	1
0200-0300	1
0700-0800	1
0800-0900	2
0900-1000	1
1100-1200	1
1500-1600	2
1600-1700	2
1700-1800	3
1800-1900	1
1900-2000	2
2000-2100	1
2200-2300	1
2300-2400	1



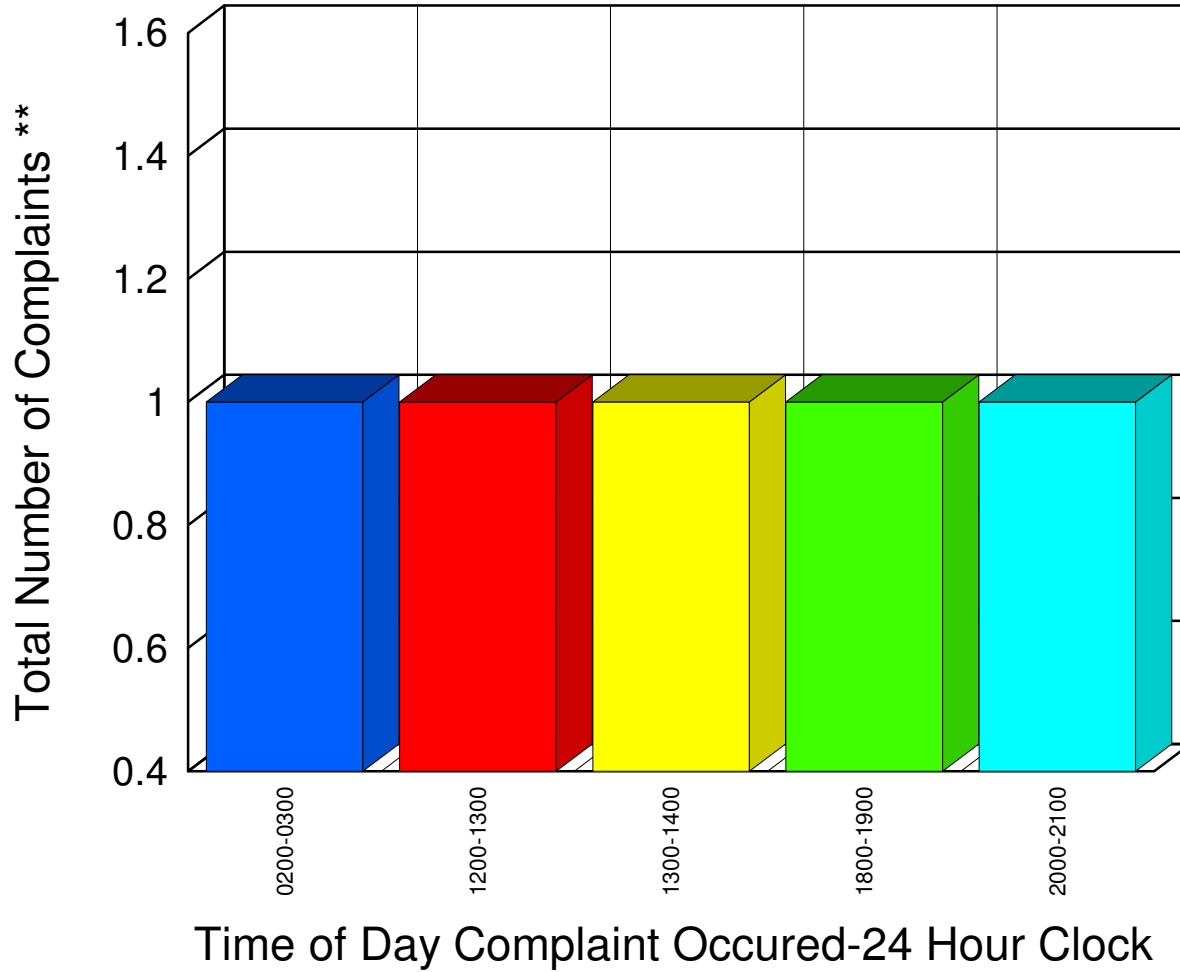
Total	22
-------	----

** Complaints taken by Muskegon Sheriff's Office

Muskegon County Sheriff's Office

Listing of Offense Reports - White River Township - 01/01/2010 03:00:00 to 01/29/2010 20:49:21

<u>0200-0300</u>	<u>1</u>
<u>1200-1300</u>	<u>1</u>
<u>1300-1400</u>	<u>1</u>
<u>1800-1900</u>	<u>1</u>
<u>2000-2100</u>	<u>1</u>



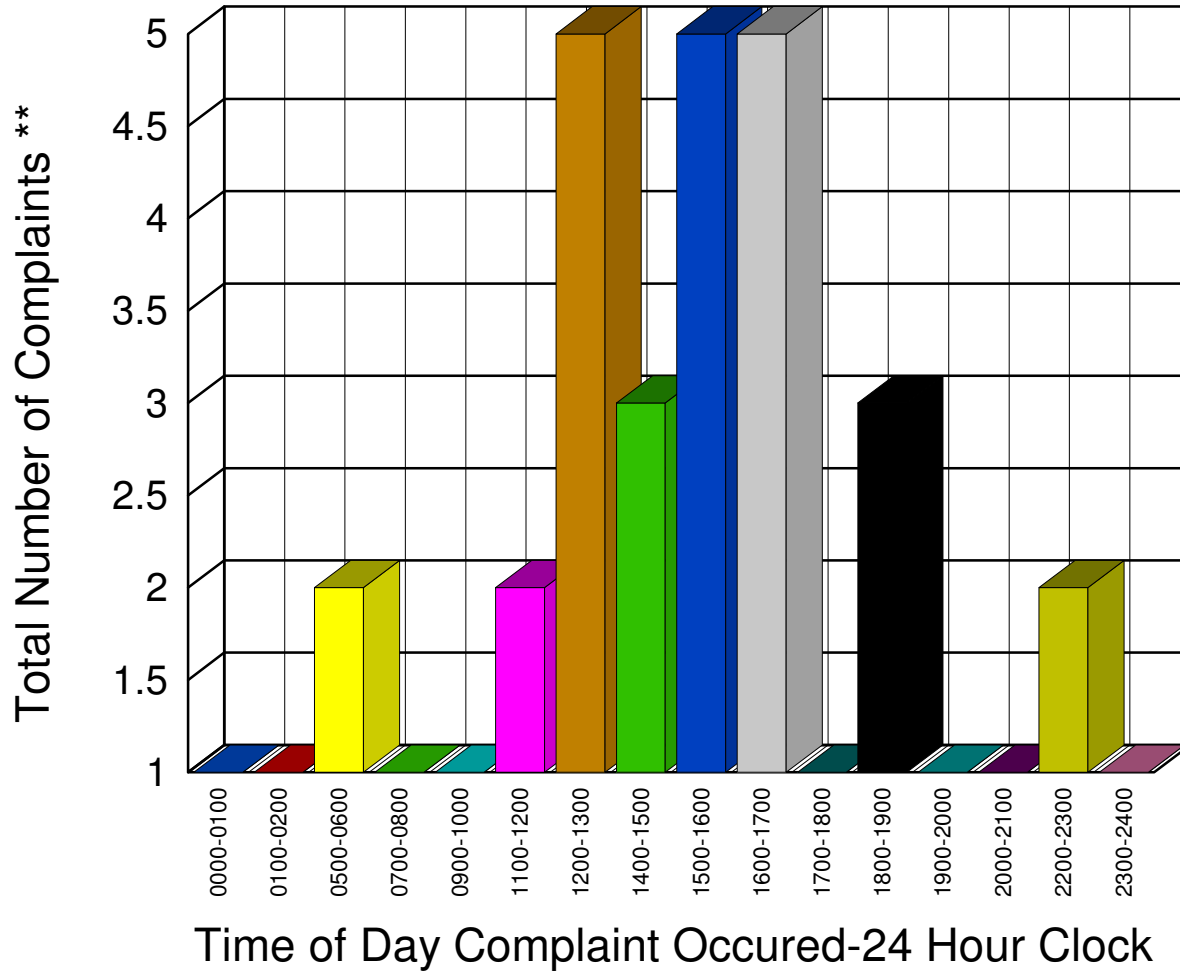
Total	5
-------	---

** Complaints taken by Muskegon Sheriff's Office

Muskegon County Sheriff's Office

Listing of Offense Reports - Whitehall Township - 01/02/2010 12:00:00 to 01/31/2010 05:54:04

0000-0100	1
0100-0200	1
0500-0600	2
0700-0800	1
0900-1000	1
1100-1200	2
1200-1300	5
1400-1500	3
1500-1600	5
1600-1700	5
1700-1800	1
1800-1900	3
1900-2000	1
2000-2100	1
2200-2300	2
2300-2400	1



Total 35

** Complaints taken by Muskegon Sheriff's Office