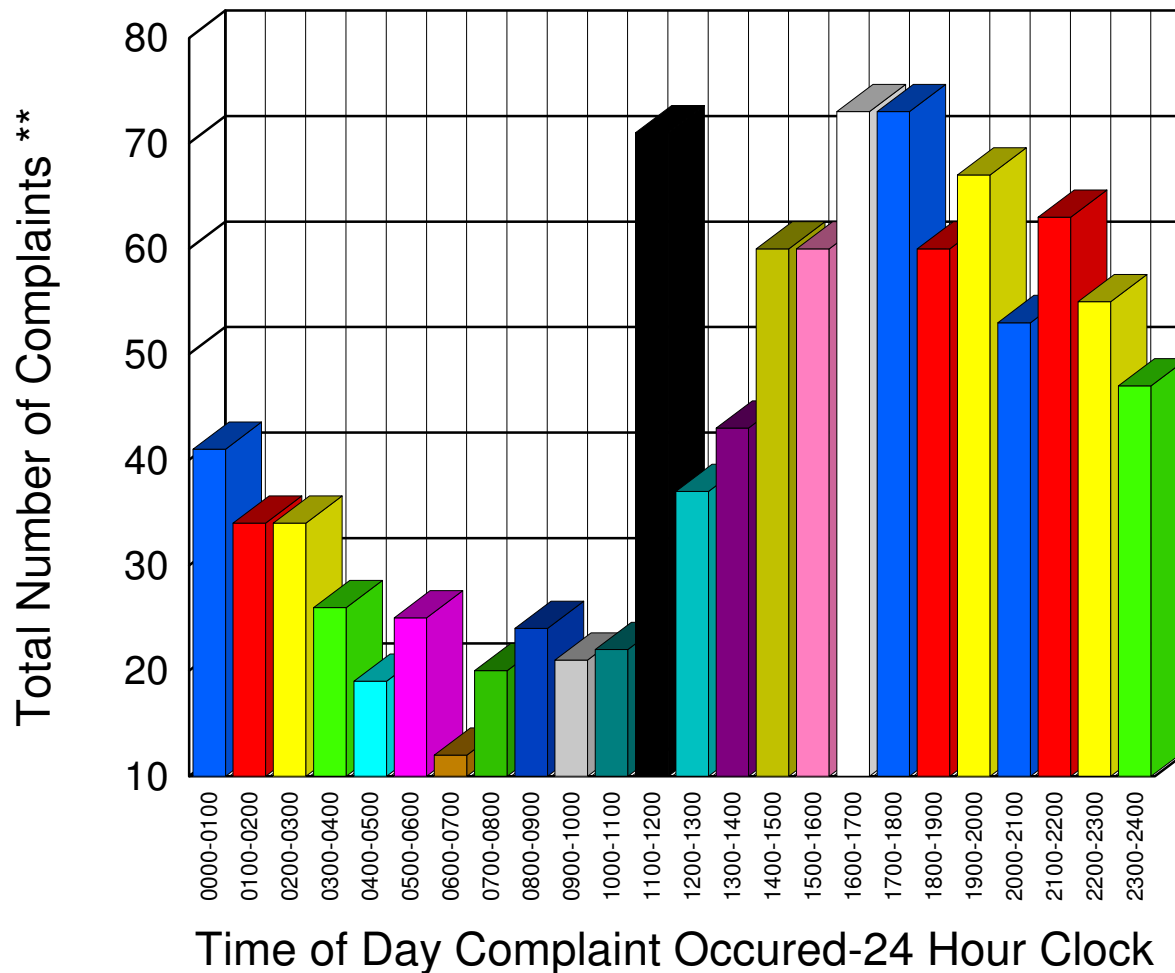


Muskegon County Sheriff's Office

Listing of Offense Reports-- 07/01/2007 to 07/31/2007

0000-0100	41
0100-0200	34
0200-0300	34
0300-0400	26
0400-0500	19
0500-0600	25
0600-0700	12
0700-0800	20
0800-0900	24
0900-1000	21
1000-1100	22
1100-1200	71
1200-1300	37
1300-1400	43
1400-1500	60
1500-1600	60
1600-1700	73
1700-1800	73
1800-1900	60
1900-2000	67
2000-2100	53
2100-2200	63
2200-2300	55
2300-2400	47

Total 1,040

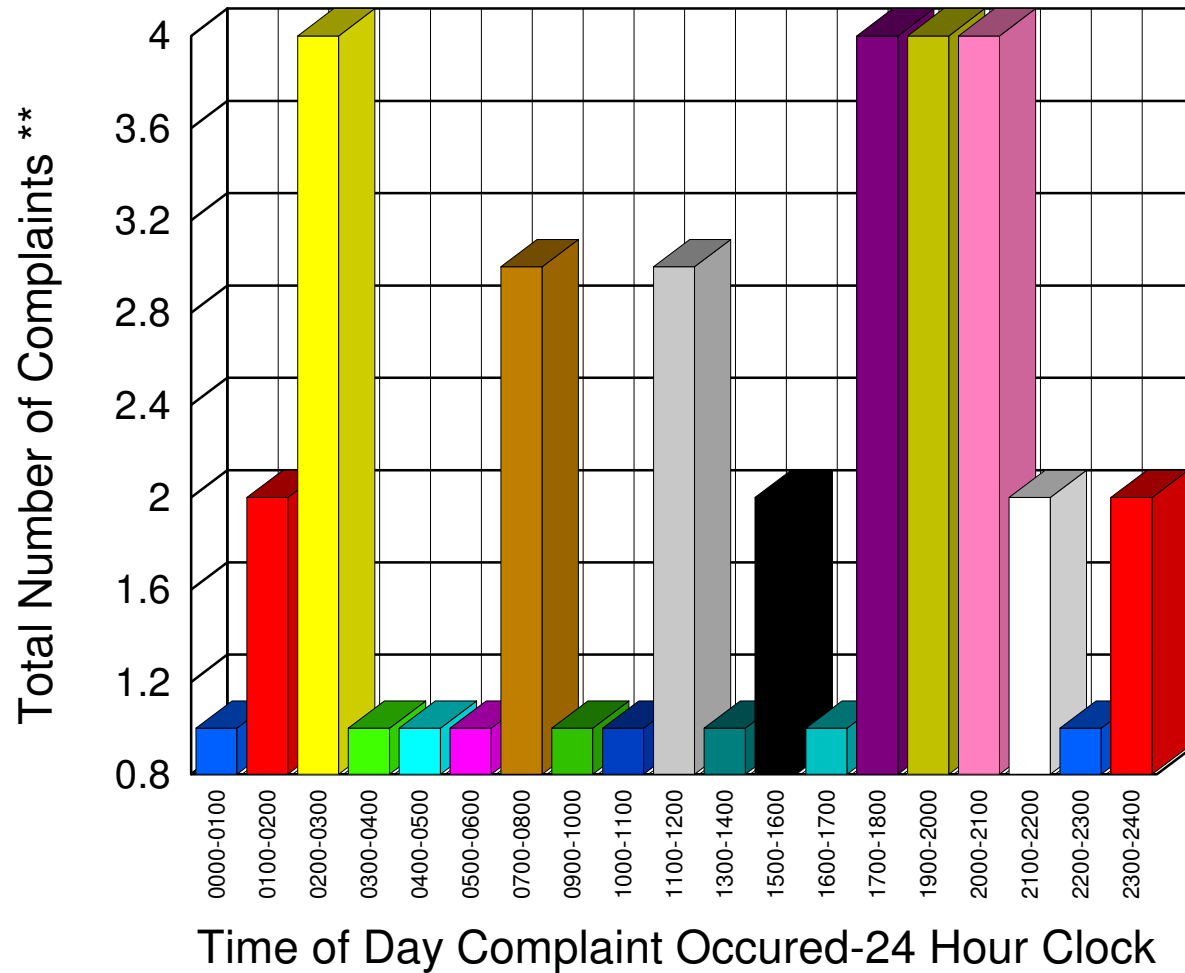


** Complaints taken by Muskegon Sheriff's Office

Muskegon County Sheriff's Office

Listing of Offense Reports--Blue Lake Township 07/01/2007 to 07/30/2007

0000-0100	1
0100-0200	2
0200-0300	4
0300-0400	1
0400-0500	1
0500-0600	1
0700-0800	3
0900-1000	1
1000-1100	1
1100-1200	3
1300-1400	1
1500-1600	2
1600-1700	1
1700-1800	4
1900-2000	4
2000-2100	4
2100-2200	2
2200-2300	1
2300-2400	2



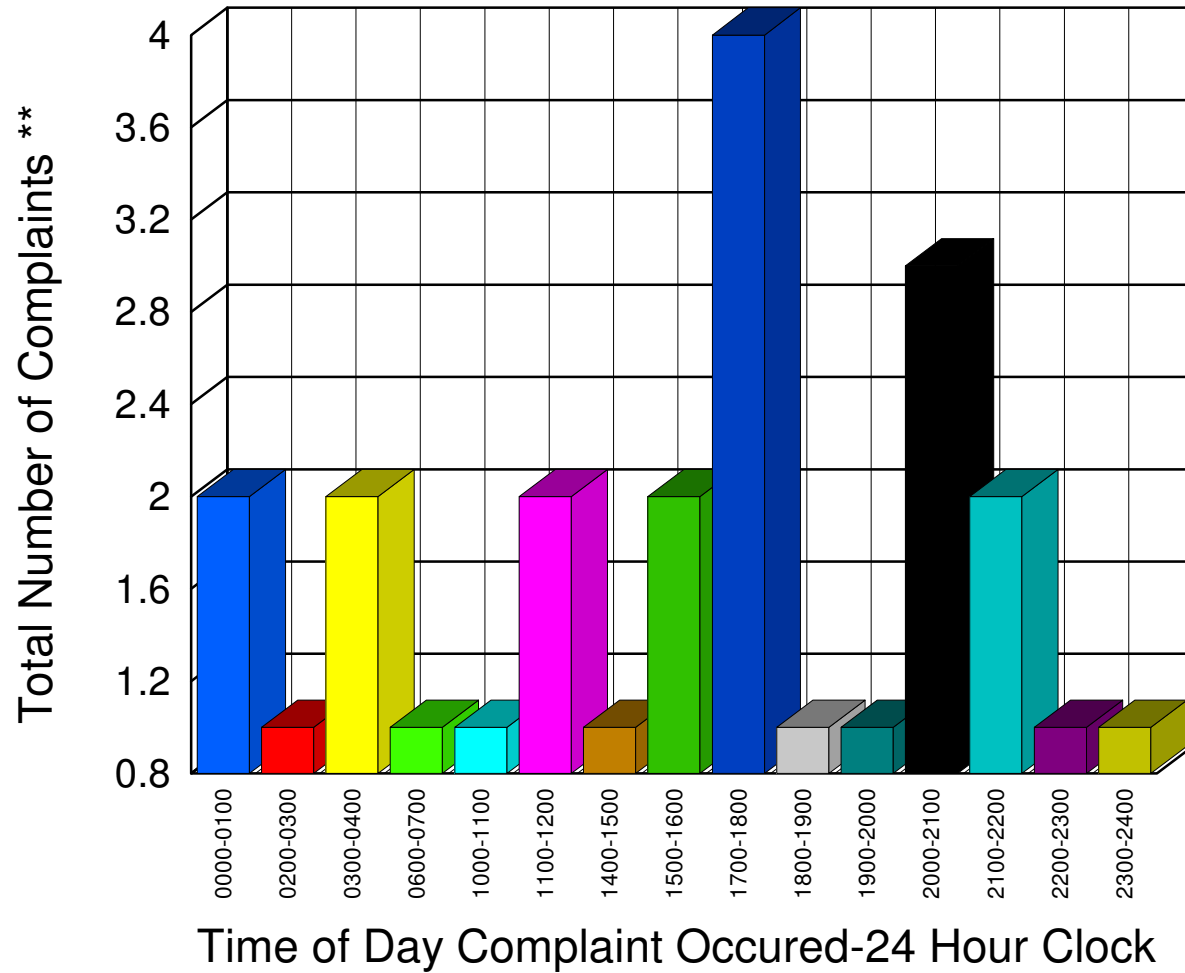
Total **39**

** Complaints taken by Muskegon Sheriff's Office

Muskegon County Sheriff's Office

Listing of Offense Reports--Casnovia and Casnovia Township 07/02/2007 to 07/31/2007

0000-0100	2
0200-0300	1
0300-0400	2
0600-0700	1
1000-1100	1
1100-1200	2
1400-1500	1
1500-1600	2
1700-1800	4
1800-1900	1
1900-2000	1
2000-2100	3
2100-2200	2
2200-2300	1
2300-2400	1



Total 25

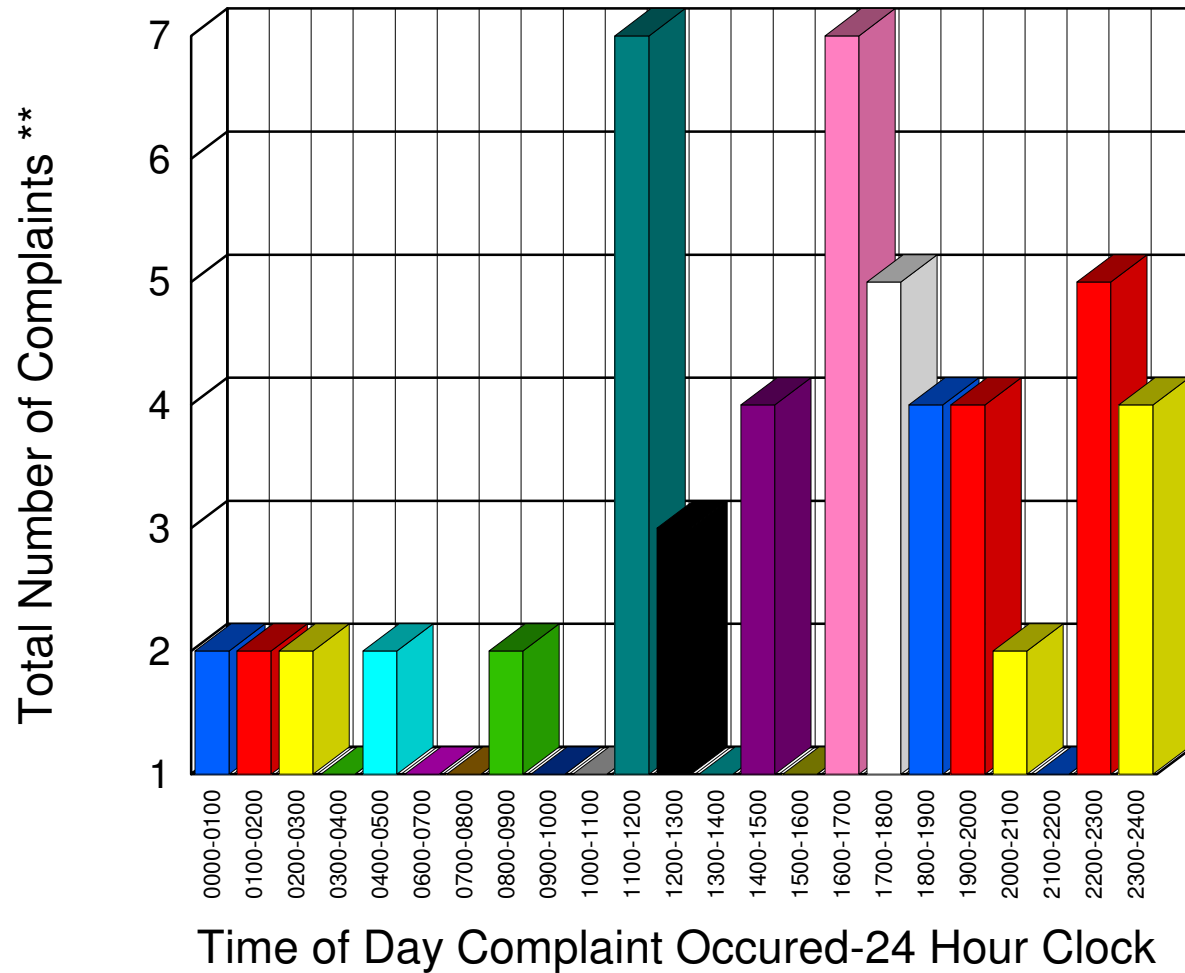
** Complaints taken by Muskegon Sheriff's Office

Muskegon County Sheriff's Office

Listing of Offense Reports--Cedar Creek Township 07/01/2007 to 07/31/2007

0000-0100	2
0100-0200	2
0200-0300	2
0300-0400	1
0400-0500	2
0600-0700	1
0700-0800	1
0800-0900	2
0900-1000	1
1000-1100	1
1100-1200	7
1200-1300	3
1300-1400	1
1400-1500	4
1500-1600	1
1600-1700	7
1700-1800	5
1800-1900	4
1900-2000	4
2000-2100	2
2100-2200	1
2200-2300	5
2300-2400	4

Total 63



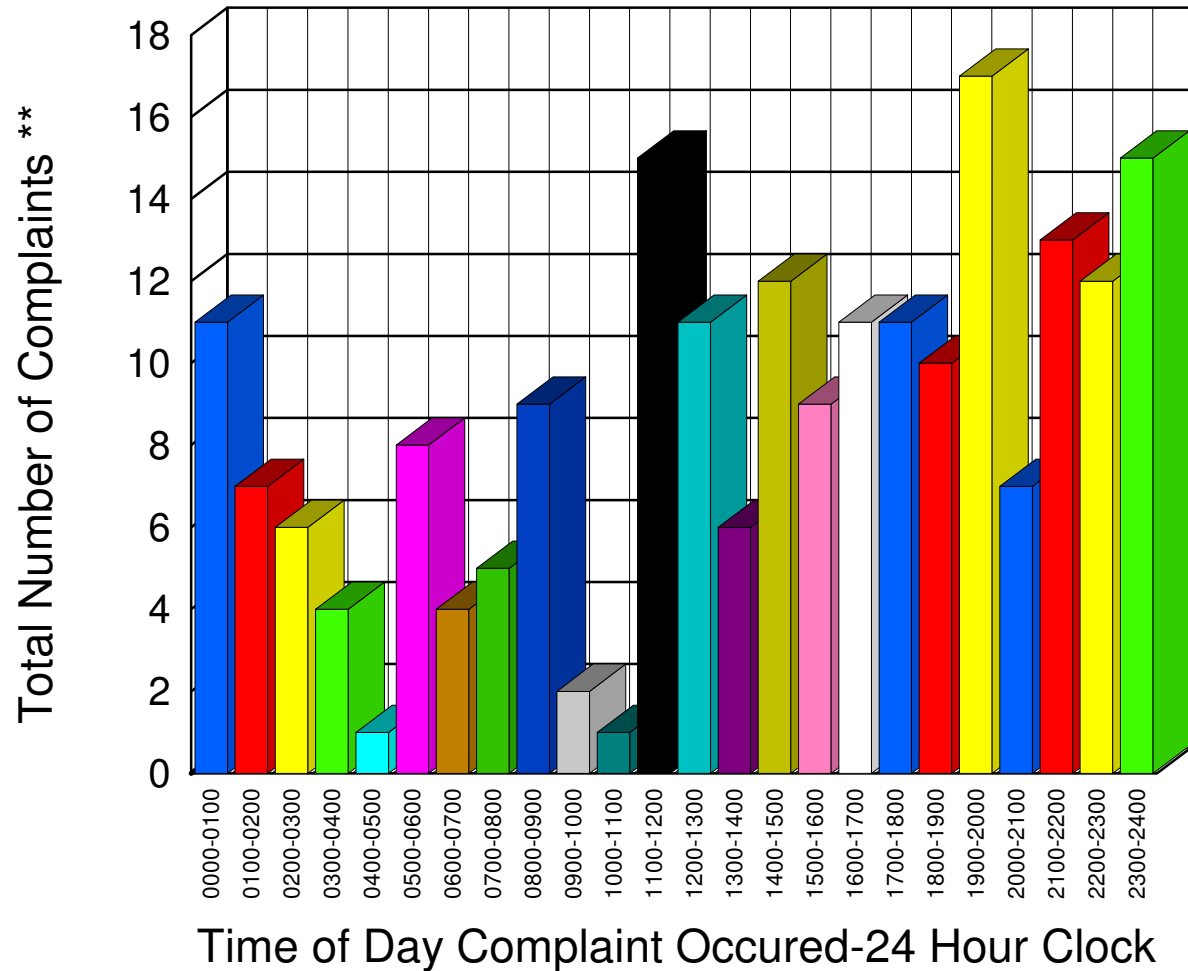
** Complaints taken by Muskegon Sheriff's Office

Muskegon County Sheriff's Office

Listing of Offense Reports--Lakewood Club and Dalton Township 07/01/2007 to 07/31/2007

0000-0100	11
0100-0200	7
0200-0300	6
0300-0400	4
0400-0500	1
0500-0600	8
0600-0700	4
0700-0800	5
0800-0900	9
0900-1000	2
1000-1100	1
1100-1200	15
1200-1300	11
1300-1400	6
1400-1500	12
1500-1600	9
1600-1700	11
1700-1800	11
1800-1900	10
1900-2000	17
2000-2100	7
2100-2200	13
2200-2300	12
2300-2400	15

Total 207



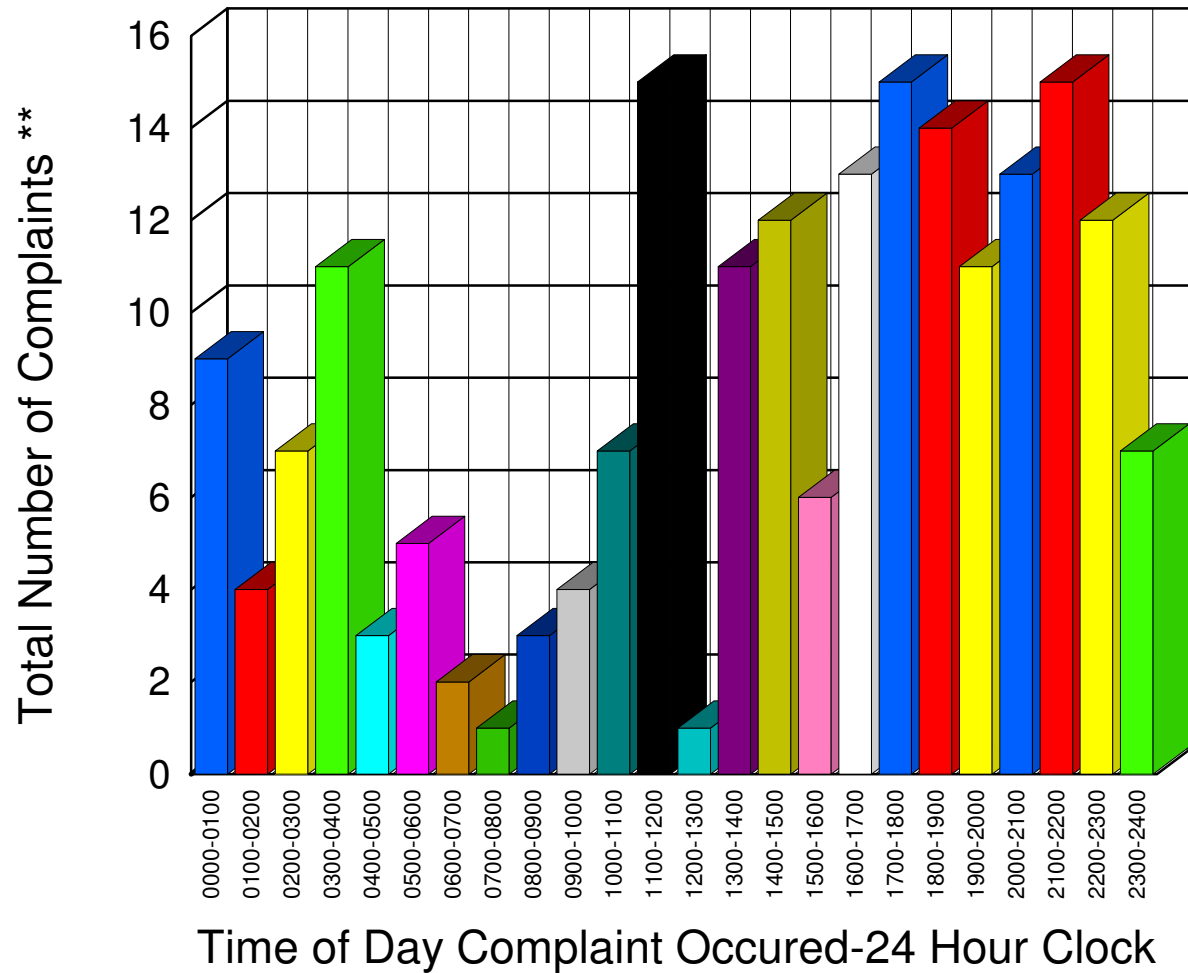
** Complaints taken by Muskegon Sheriff's Office

Muskegon County Sheriff's Office

Listing of Offense Reports--Egelston Township 07/01/2007 to 07/31/2007

0000-0100	9
0100-0200	4
0200-0300	7
0300-0400	11
0400-0500	3
0500-0600	5
0600-0700	2
0700-0800	1
0800-0900	3
0900-1000	4
1000-1100	7
1100-1200	15
1200-1300	1
1300-1400	11
1400-1500	12
1500-1600	6
1600-1700	13
1700-1800	15
1800-1900	14
1900-2000	11
2000-2100	13
2100-2200	15
2200-2300	12
2300-2400	7

Total 201



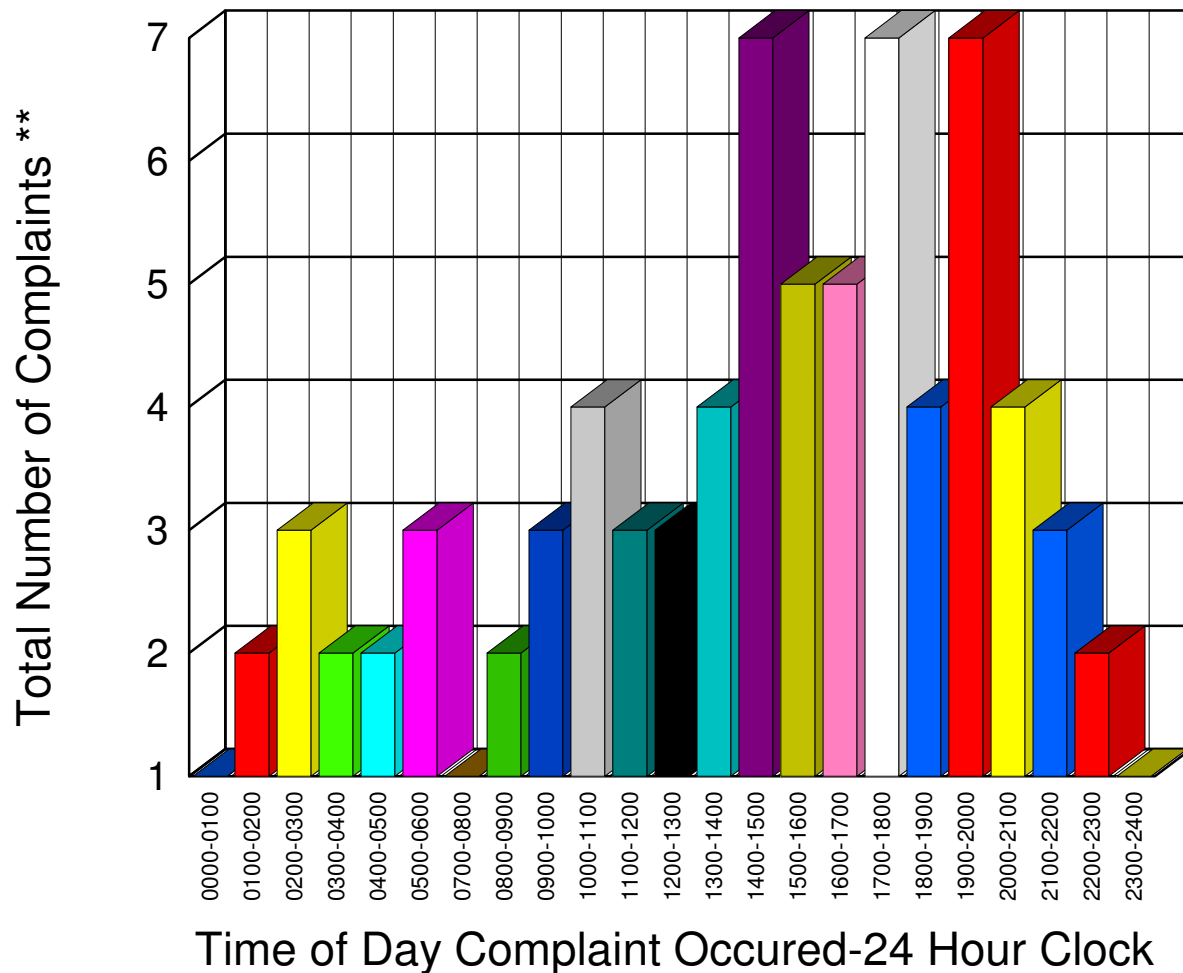
** Complaints taken by Muskegon Sheriff's Office

Muskegon County Sheriff's Office

Listing of Offense Reports--Fruitland Township 07/01/2007 to 07/31/2007

0000-0100	1
0100-0200	2
0200-0300	3
0300-0400	2
0400-0500	2
0500-0600	3
0700-0800	1
0800-0900	2
0900-1000	3
1000-1100	4
1100-1200	3
1200-1300	3
1300-1400	4
1400-1500	7
1500-1600	5
1600-1700	5
1700-1800	7
1800-1900	4
1900-2000	7
2000-2100	4
2100-2200	3
2200-2300	2
2300-2400	1

Total 78

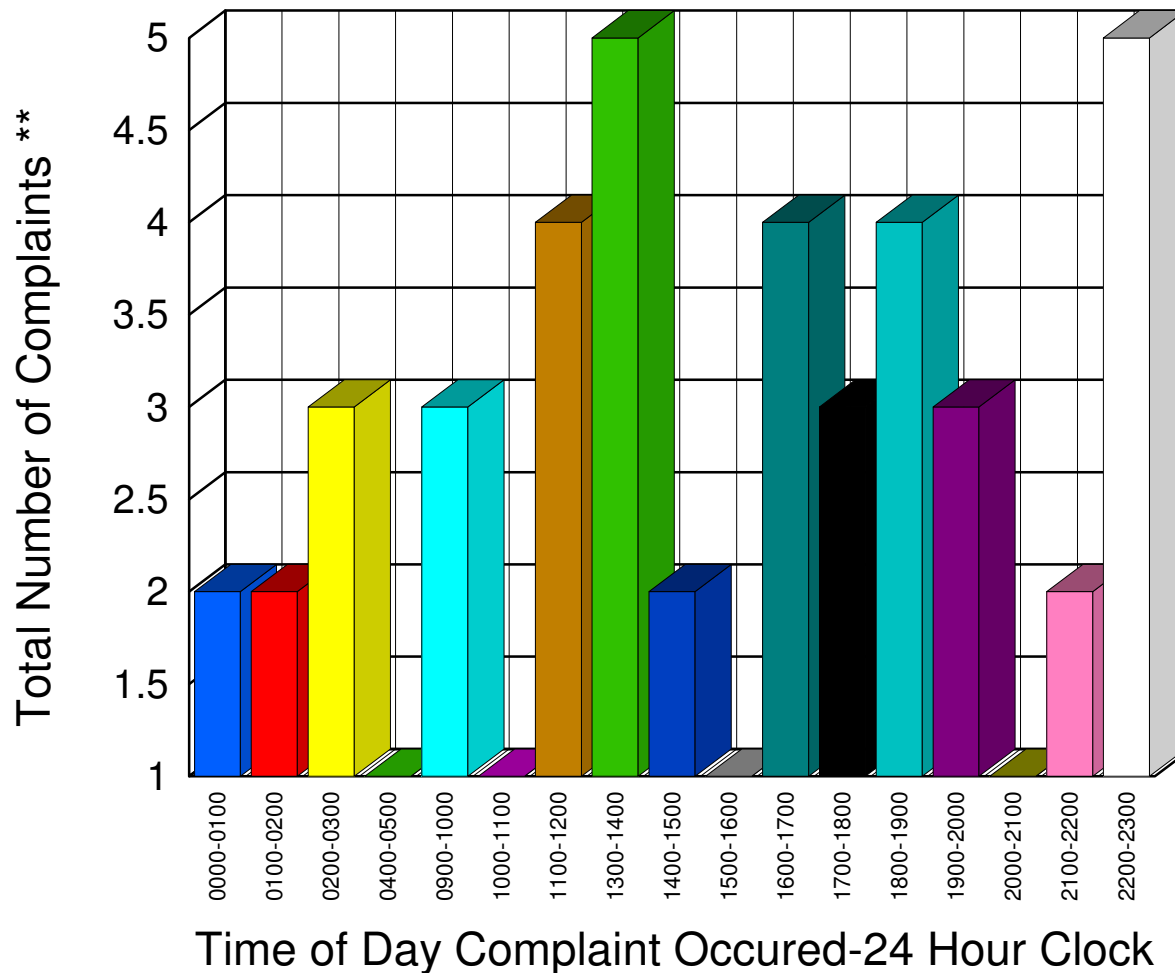


** Complaints taken by Muskegon Sheriff's Office

Muskegon County Sheriff's Office

Listing of Offense Reports--HoltonTownship 07/01/2007 to 07/31/2007

0000-0100	2
0100-0200	2
0200-0300	3
0400-0500	1
0900-1000	3
1000-1100	1
1100-1200	4
1300-1400	5
1400-1500	2
1500-1600	1
1600-1700	4
1700-1800	3
1800-1900	4
1900-2000	3
2000-2100	1
2100-2200	2
2200-2300	5



Total 46

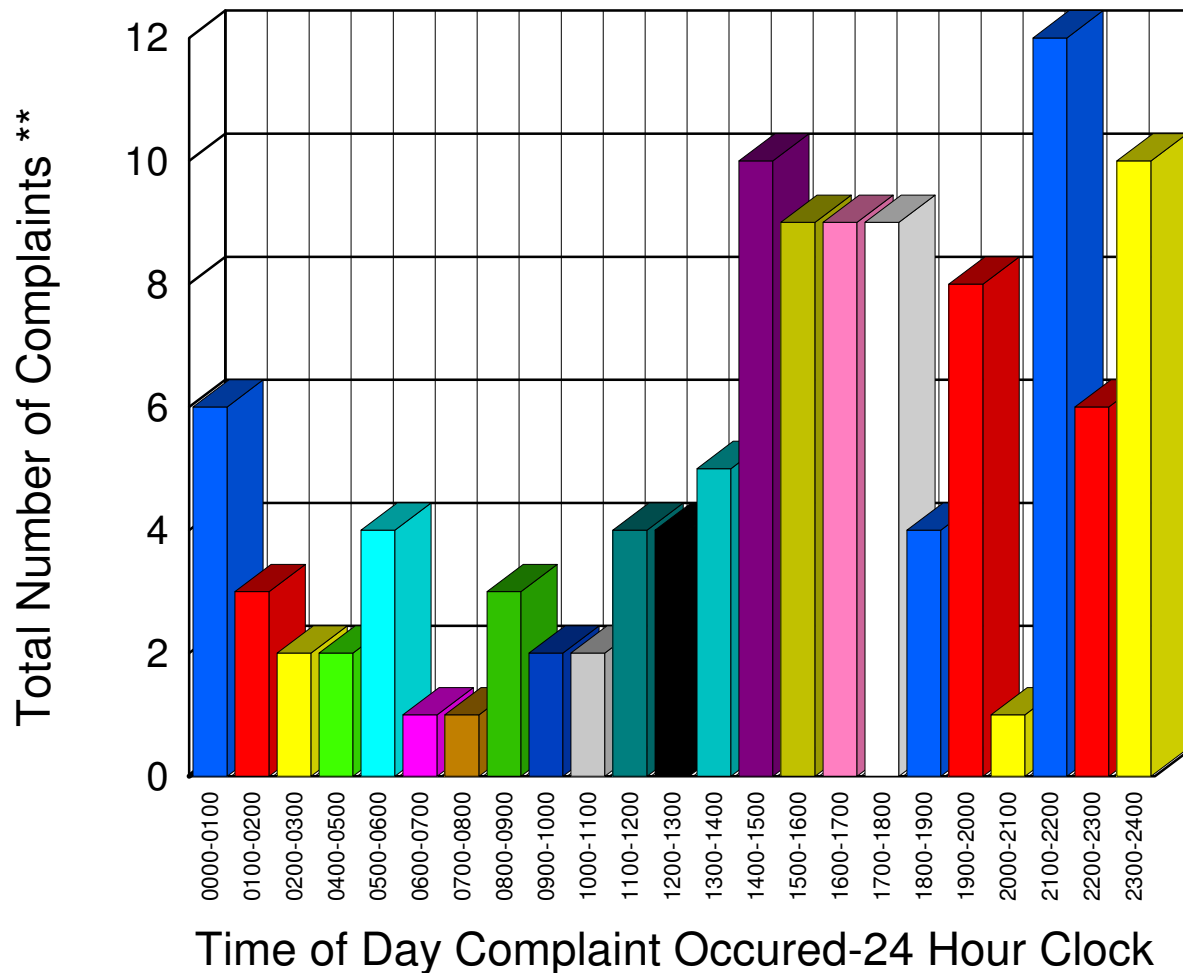
** Complaints taken by Muskegon Sheriff's Office

Muskegon County Sheriff's Office

Listing of Offense Reports--Laketon Township 07/01/2007 to 07/31/2007

0000-0100	6
0100-0200	3
0200-0300	2
0400-0500	2
0500-0600	4
0600-0700	1
0700-0800	1
0800-0900	3
0900-1000	2
1000-1100	2
1100-1200	4
1200-1300	4
1300-1400	5
1400-1500	10
1500-1600	9
1600-1700	9
1700-1800	9
1800-1900	4
1900-2000	8
2000-2100	1
2100-2200	12
2200-2300	6
2300-2400	10

Total 117

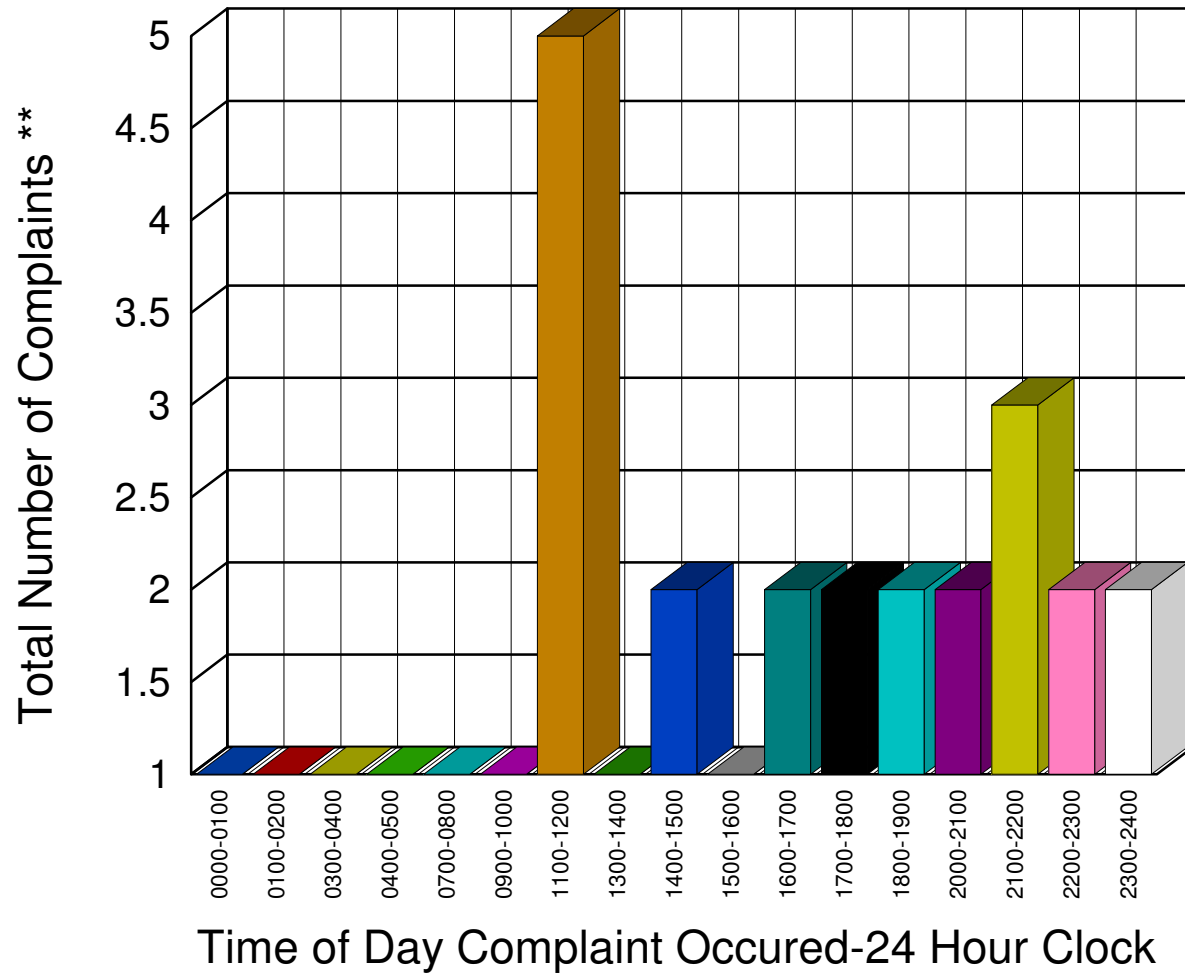


** Complaints taken by Muskegon Sheriff's Office

Muskegon County Sheriff's Office

Listing of Offense Reports--Montague Township 07/02/2007 to 07/31/2007

0000-0100	1
0100-0200	1
0300-0400	1
0400-0500	1
0700-0800	1
0900-1000	1
1100-1200	5
1300-1400	1
1400-1500	2
1500-1600	1
1600-1700	2
1700-1800	2
1800-1900	2
2000-2100	2
2100-2200	3
2200-2300	2
2300-2400	2



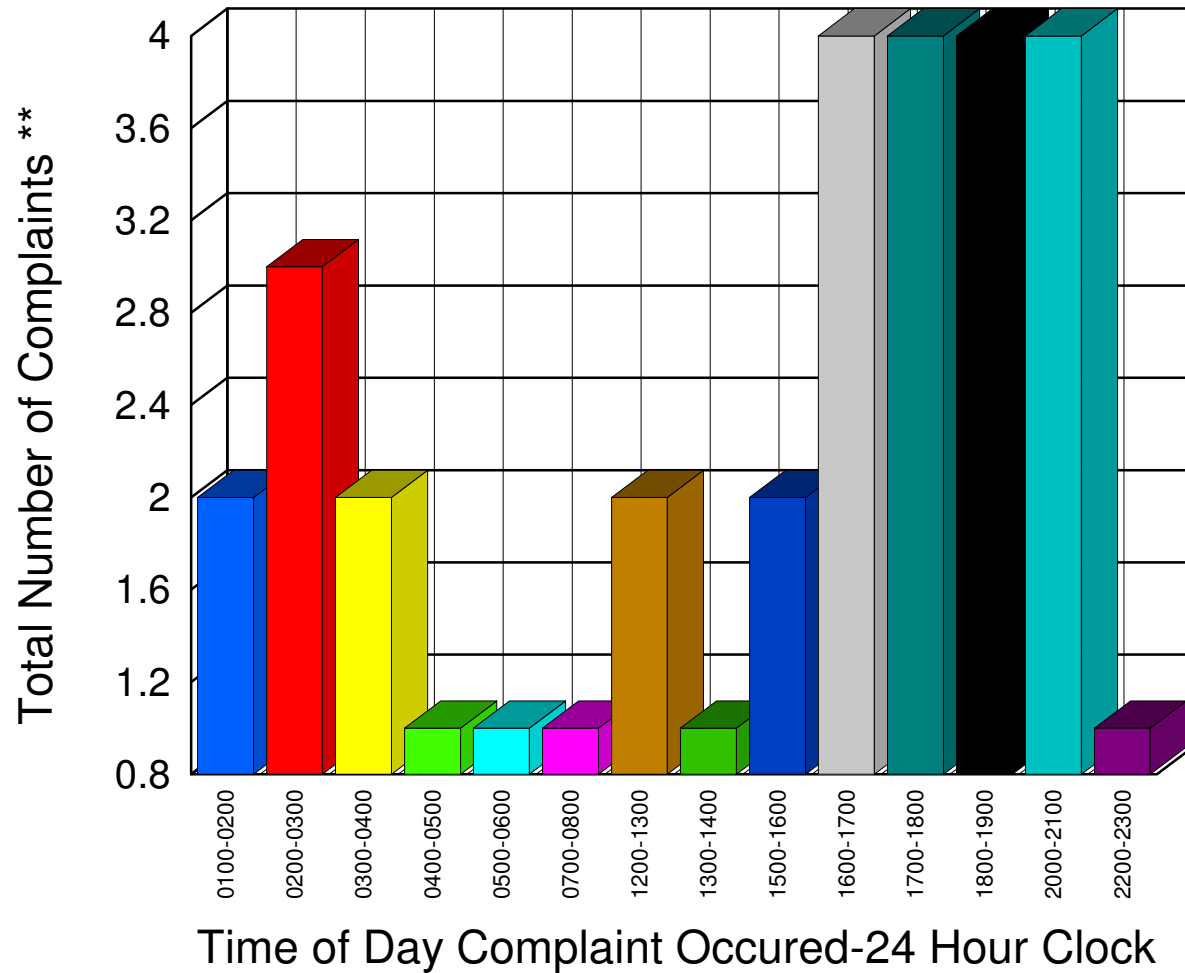
Total **30**

** Complaints taken by Muskegon Sheriff's Office

Muskegon County Sheriff's Office

Listing of Offense Reports--Moorland Township 07/04/2007 to 07/31/2007

0100-0200	2
0200-0300	3
0300-0400	2
0400-0500	1
0500-0600	1
0700-0800	1
1200-1300	2
1300-1400	1
1500-1600	2
1600-1700	4
1700-1800	4
1800-1900	4
2000-2100	4
2200-2300	1



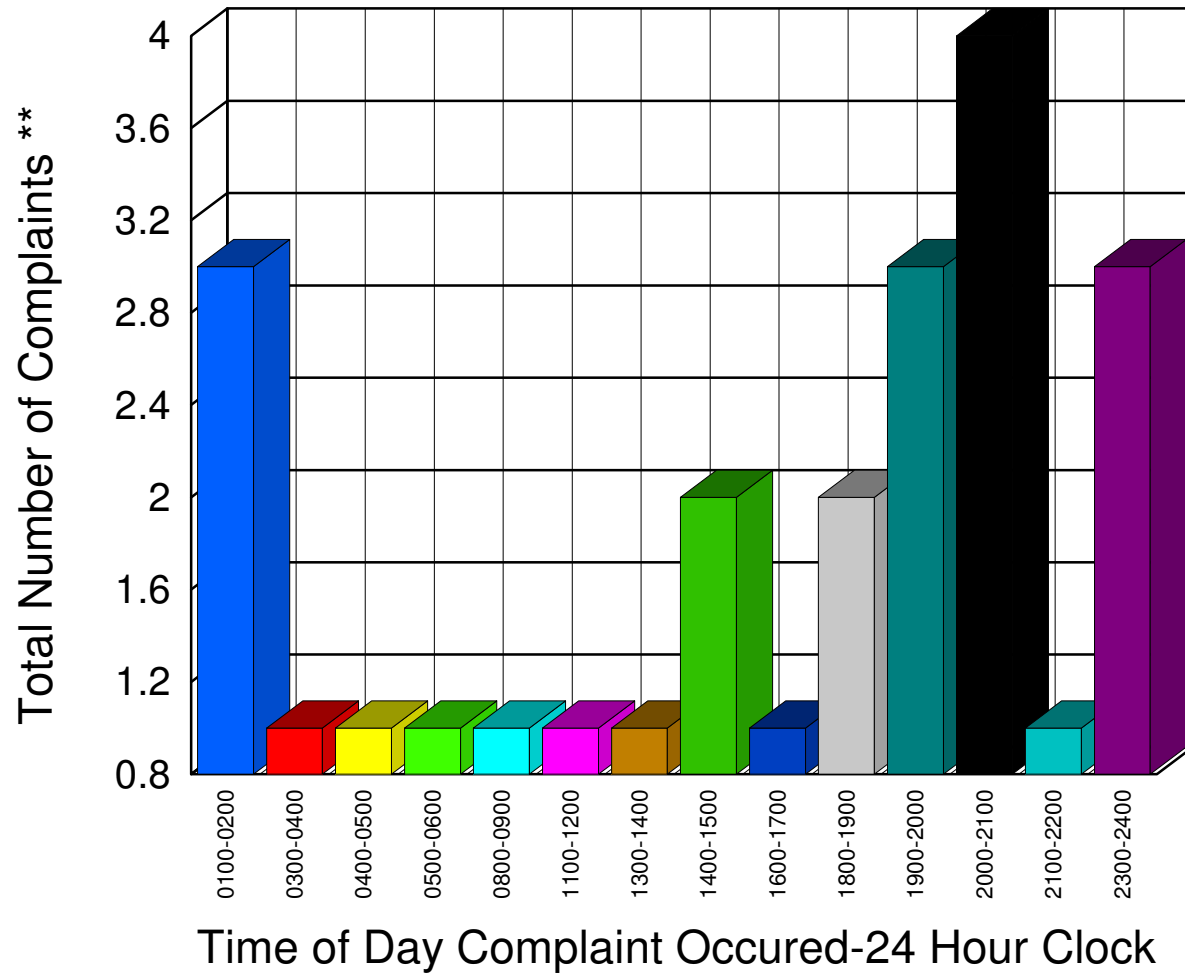
Total **32**

** Complaints taken by Muskegon Sheriff's Office

Muskegon County Sheriff's Office

Listing of Offense Reports--Ravenna and Ravenna Township 07/02/2007 to 07/30/2007

0100-0200	3
0300-0400	1
0400-0500	1
0500-0600	1
0800-0900	1
1100-1200	1
1300-1400	1
1400-1500	2
1600-1700	1
1800-1900	2
1900-2000	3
2000-2100	4
2100-2200	1
2300-2400	3



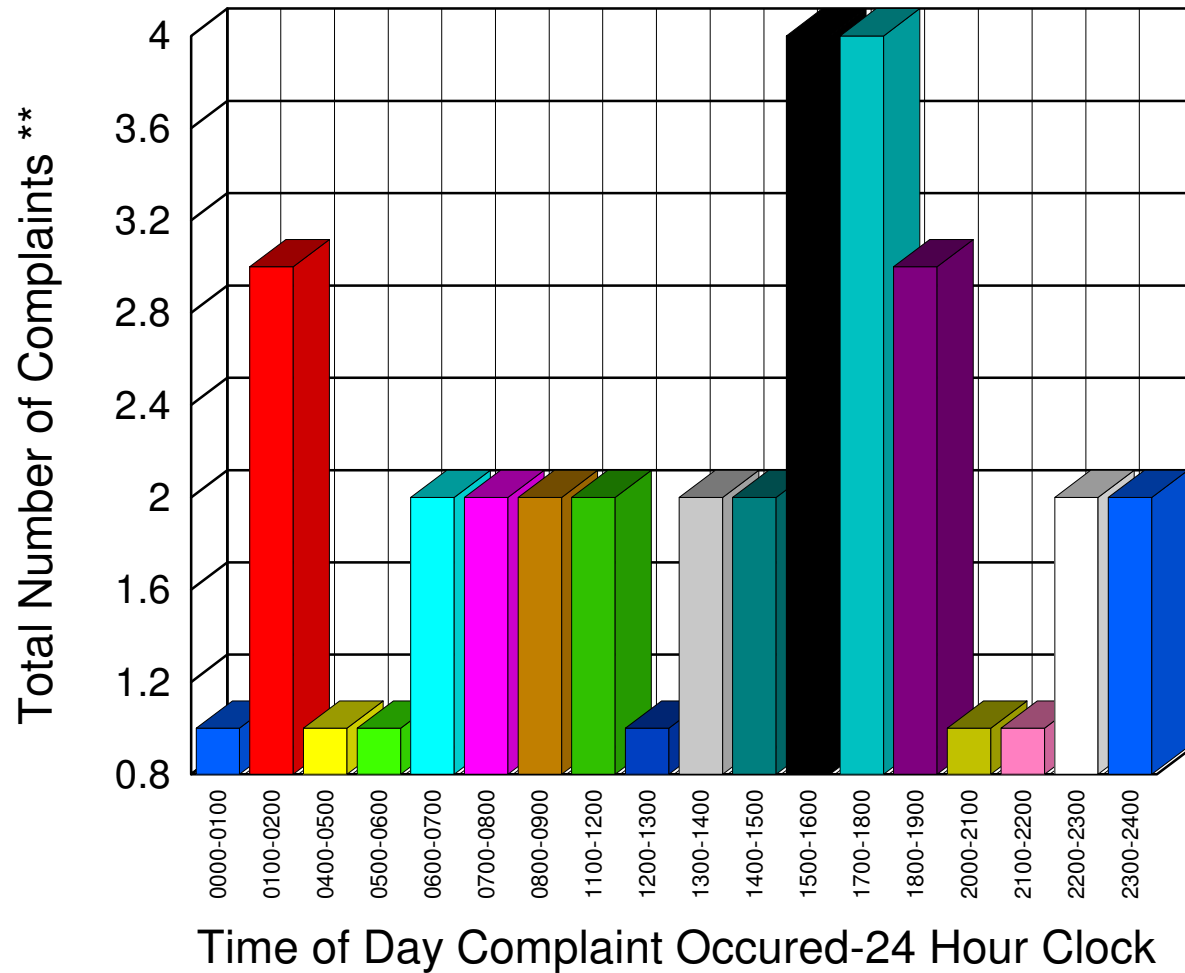
Total	25
-------	----

** Complaints taken by Muskegon Sheriff's Office

Muskegon County Sheriff's Office

Listing of Offense Reports--Sullivan Township 07/02/2007 to 07/31/2007

0000-0100	1
0100-0200	3
0400-0500	1
0500-0600	1
0600-0700	2
0700-0800	2
0800-0900	2
1100-1200	2
1200-1300	1
1300-1400	2
1400-1500	2
1500-1600	4
1700-1800	4
1800-1900	3
2000-2100	1
2100-2200	1
2200-2300	2
2300-2400	2



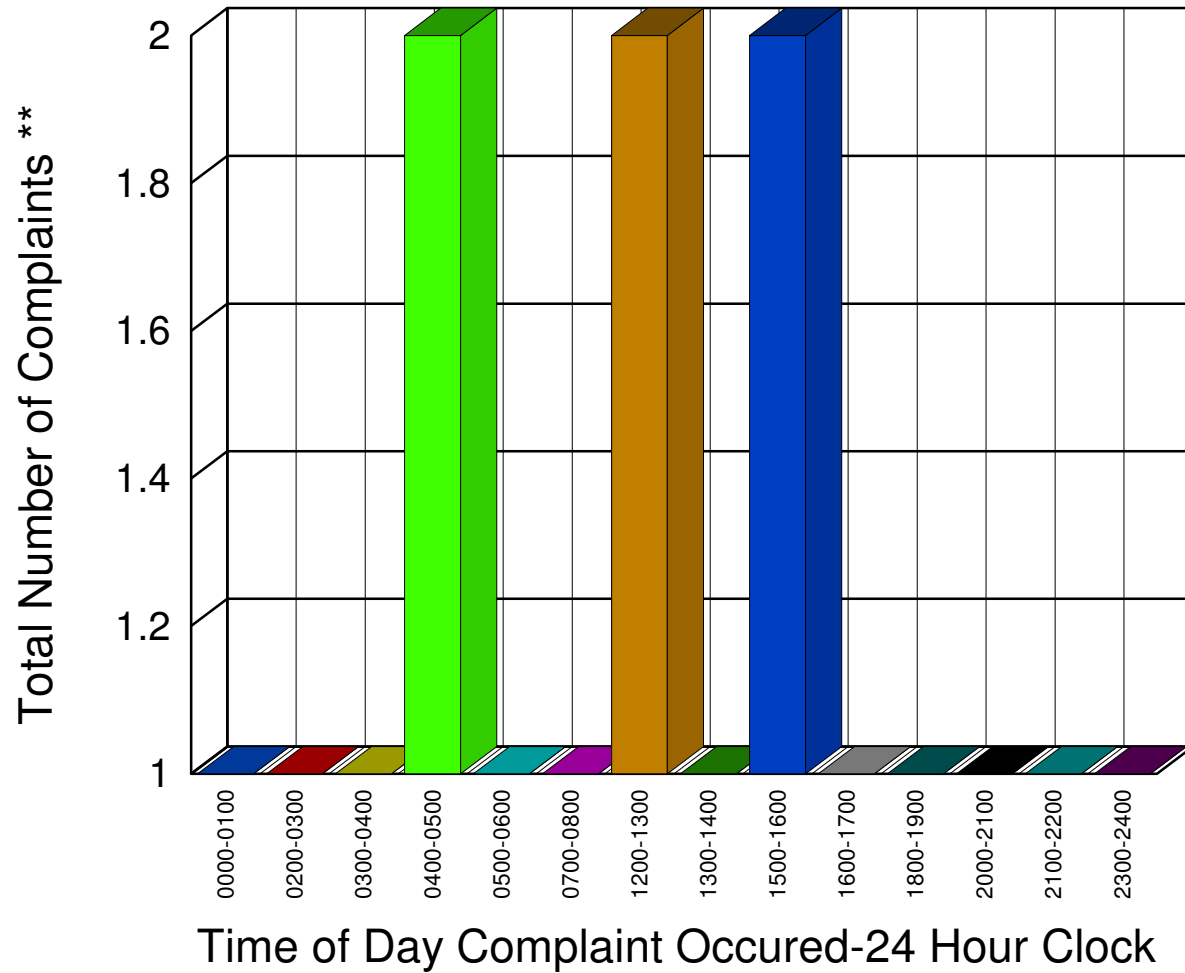
Total 36

** Complaints taken by Muskegon Sheriff's Office

Muskegon County Sheriff's Office

Listing of Offense Reports--White River Township 07/01/2007 to 07/31/2007

0000-0100	1
0200-0300	1
0300-0400	1
0400-0500	2
0500-0600	1
0700-0800	1
1200-1300	2
1300-1400	1
1500-1600	2
1600-1700	1
1800-1900	1
2000-2100	1
2100-2200	1
2300-2400	1



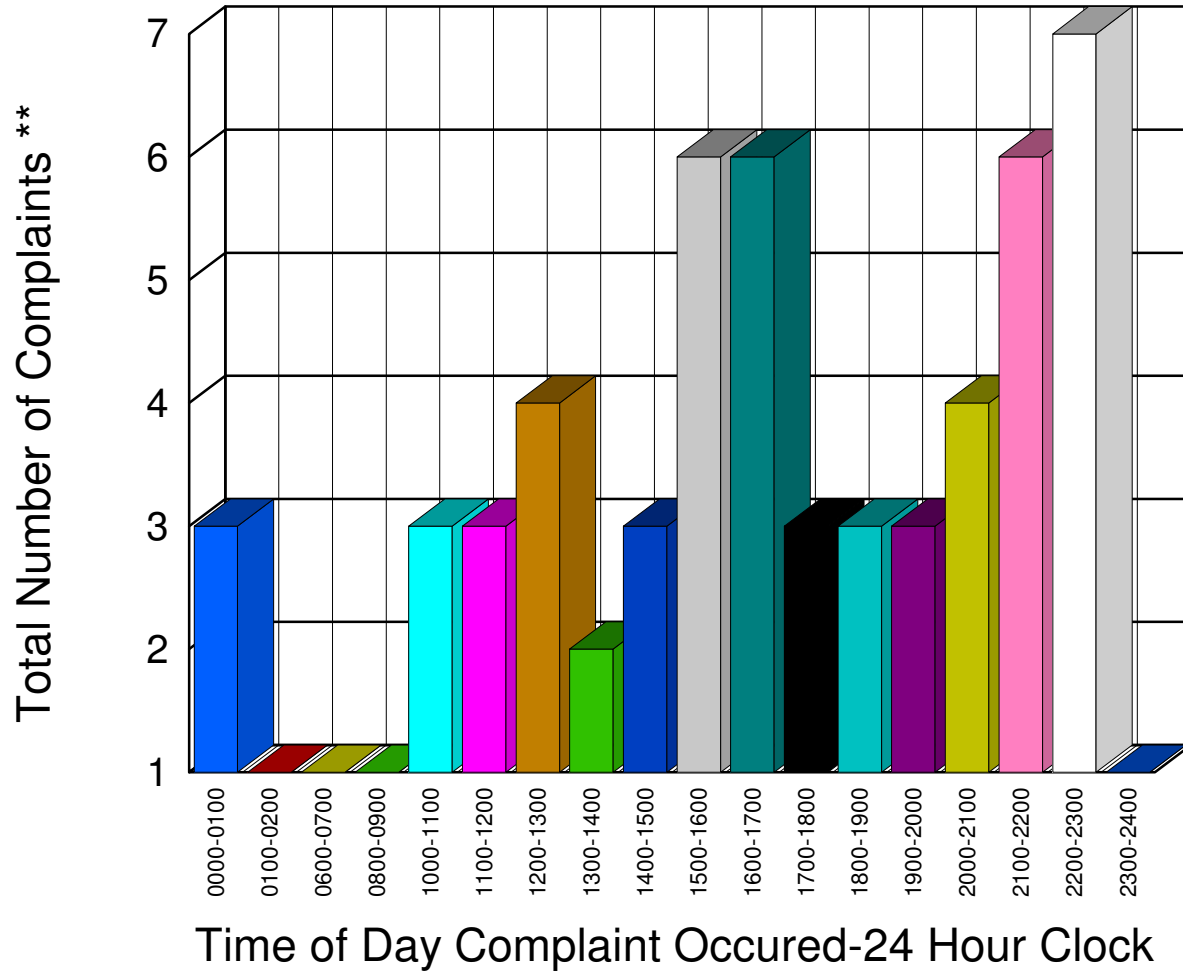
Total 17

** Complaints taken by Muskegon Sheriff's Office

Muskegon County Sheriff's Office

Listing of Offense Reports--Whitehall Township 07/02/2007 to 07/31/2007

0000-0100	3
0100-0200	1
0600-0700	1
0800-0900	1
1000-1100	3
1100-1200	3
1200-1300	4
1300-1400	2
1400-1500	3
1500-1600	6
1600-1700	6
1700-1800	3
1800-1900	3
1900-2000	3
2000-2100	4
2100-2200	6
2200-2300	7
2300-2400	1



Total 60

** Complaints taken by Muskegon Sheriff's Office