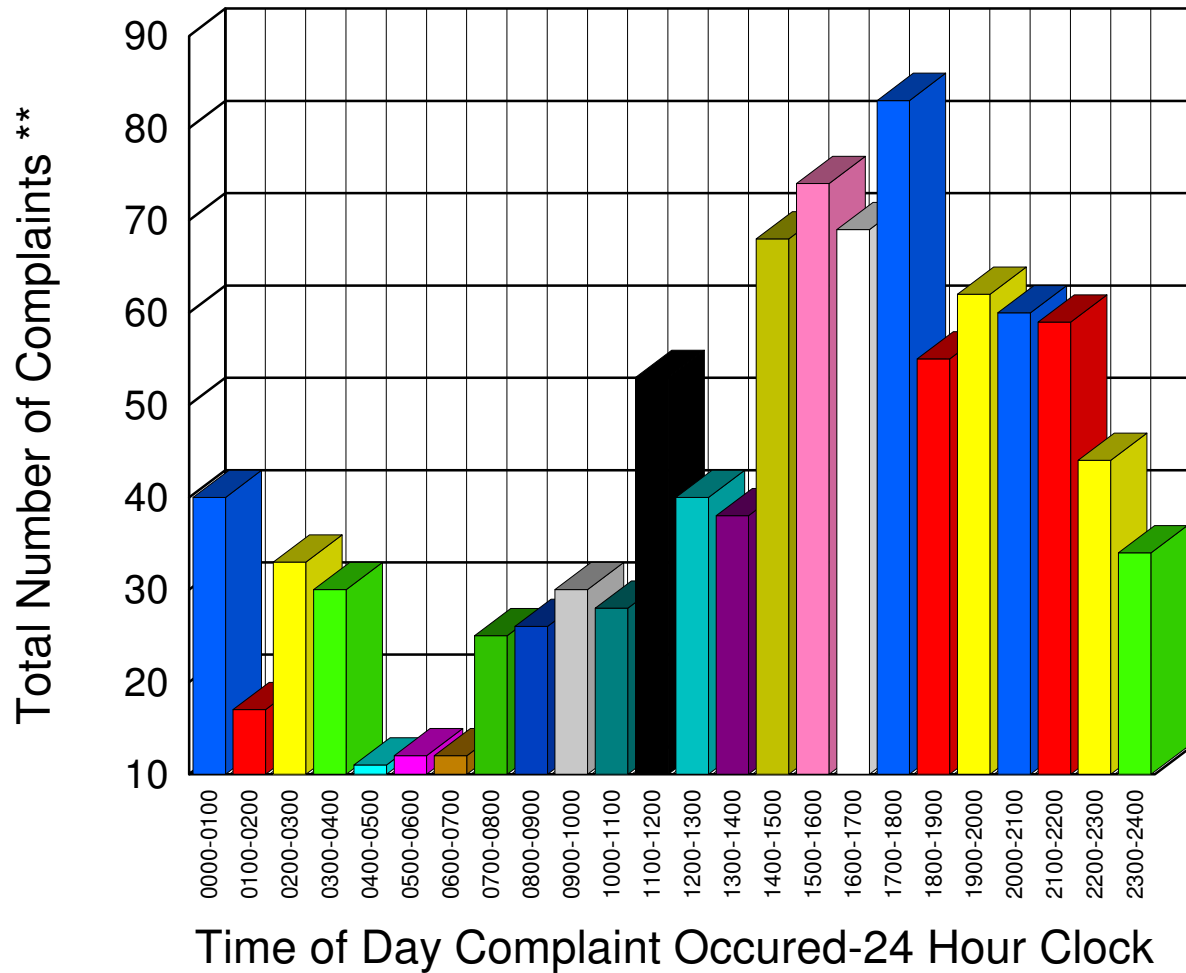


# Muskegon County Sheriff's Office

Listing of Offense Reports-- 06/01/2007 to 06/30/2007

|           |    |
|-----------|----|
| 0000-0100 | 40 |
| 0100-0200 | 17 |
| 0200-0300 | 33 |
| 0300-0400 | 30 |
| 0400-0500 | 11 |
| 0500-0600 | 12 |
| 0600-0700 | 12 |
| 0700-0800 | 25 |
| 0800-0900 | 26 |
| 0900-1000 | 30 |
| 1000-1100 | 28 |
| 1100-1200 | 53 |
| 1200-1300 | 40 |
| 1300-1400 | 38 |
| 1400-1500 | 68 |
| 1500-1600 | 74 |
| 1600-1700 | 69 |
| 1700-1800 | 83 |
| 1800-1900 | 55 |
| 1900-2000 | 62 |
| 2000-2100 | 60 |
| 2100-2200 | 59 |
| 2200-2300 | 44 |
| 2300-2400 | 34 |

Total 1,003

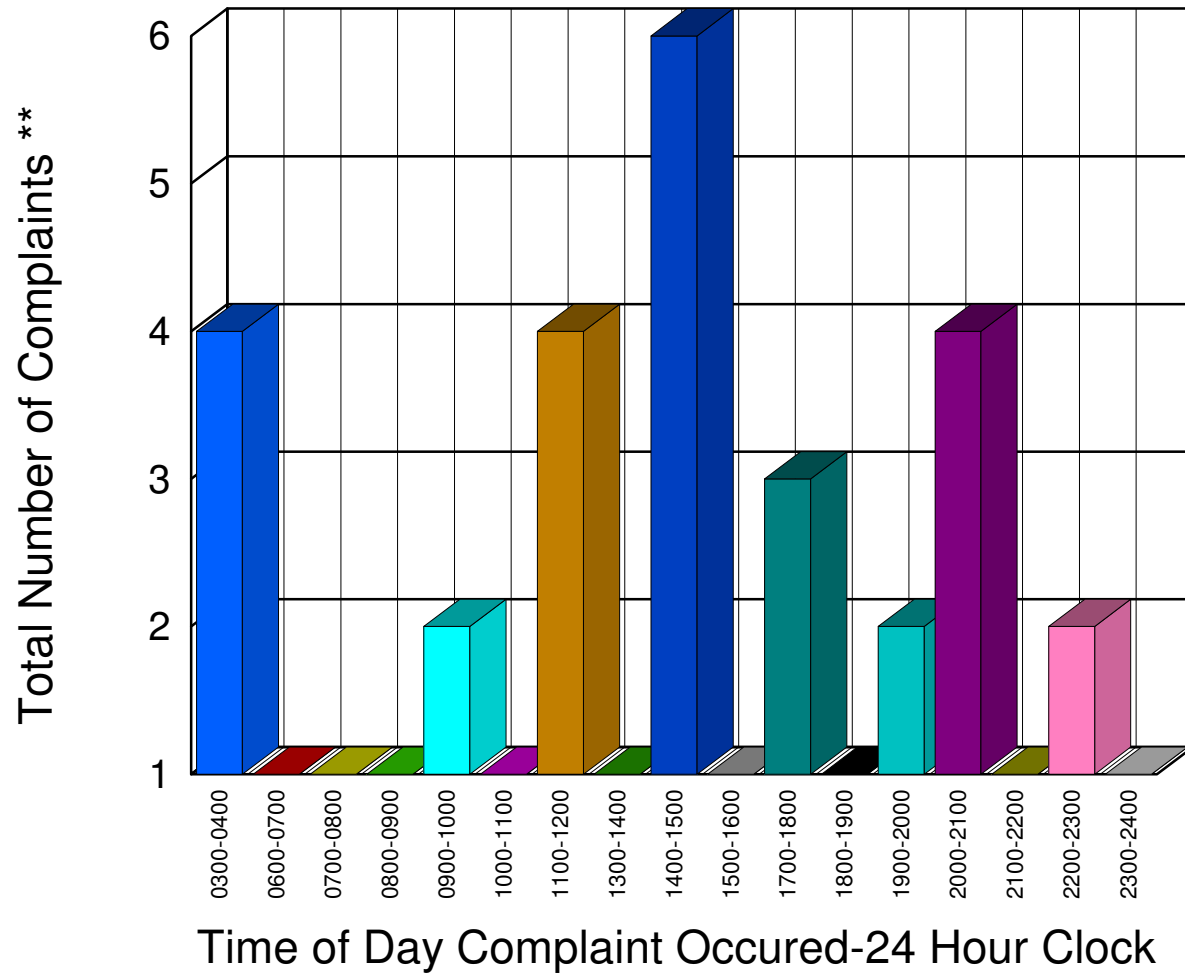


\*\* Complaints taken by Muskegon Sheriff's Office

# Muskegon County Sheriff's Office

Listing of Offense Reports--Blue Lake Township 06/01/2007 to 06/30/2007

|           |   |
|-----------|---|
| 0300-0400 | 4 |
| 0600-0700 | 1 |
| 0700-0800 | 1 |
| 0800-0900 | 1 |
| 0900-1000 | 2 |
| 1000-1100 | 1 |
| 1100-1200 | 4 |
| 1300-1400 | 1 |
| 1400-1500 | 6 |
| 1500-1600 | 1 |
| 1700-1800 | 3 |
| 1800-1900 | 1 |
| 1900-2000 | 2 |
| 2000-2100 | 4 |
| 2100-2200 | 1 |
| 2200-2300 | 2 |
| 2300-2400 | 1 |




---

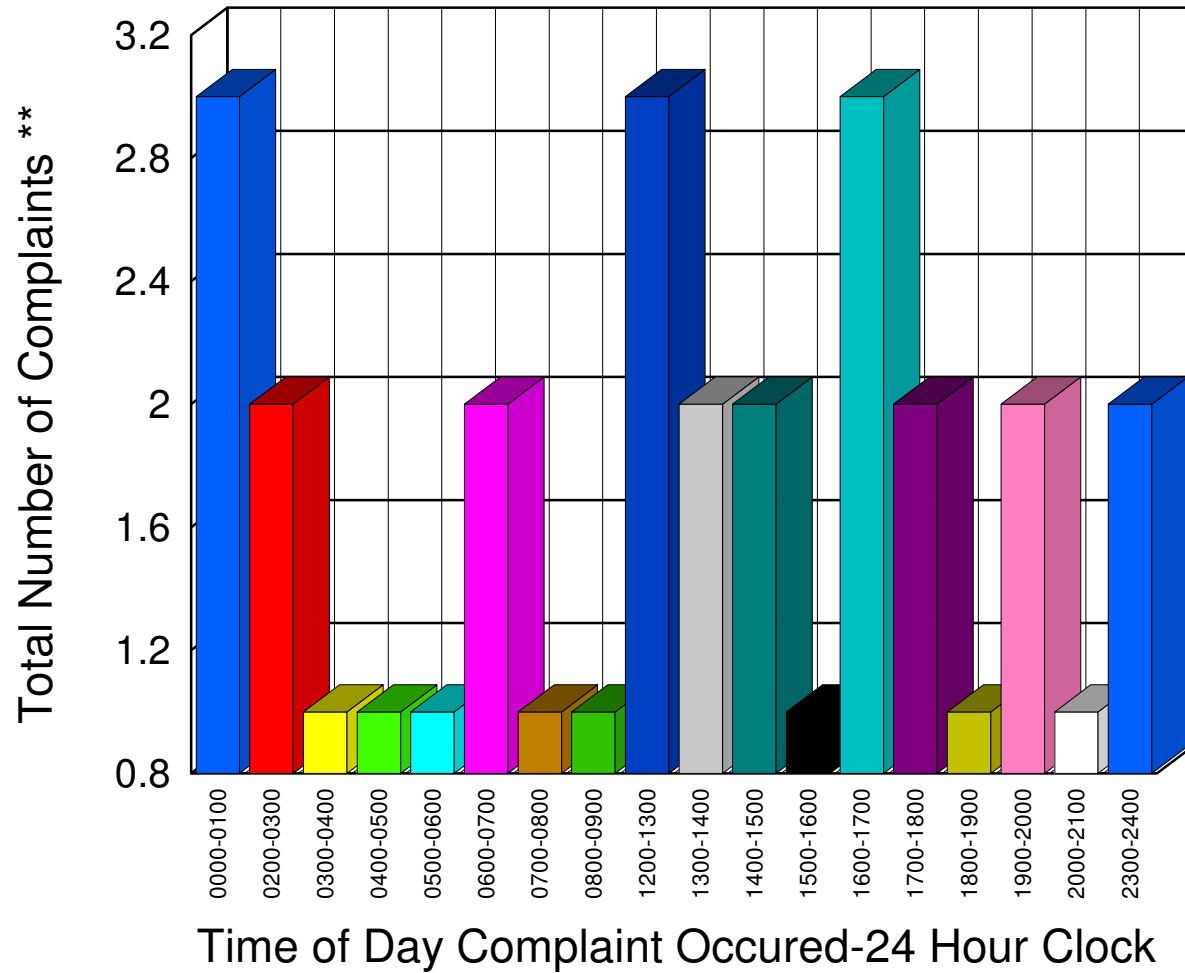
Total **36**

\*\* Complaints taken by Muskegon Sheriff's Office

# Muskegon County Sheriff's Office

Listing of Offense Reports--Casnovia and Casnovia Township 06/01/2007 to 06/30/2007

|           |   |
|-----------|---|
| 0000-0100 | 3 |
| 0200-0300 | 2 |
| 0300-0400 | 1 |
| 0400-0500 | 1 |
| 0500-0600 | 1 |
| 0600-0700 | 2 |
| 0700-0800 | 1 |
| 0800-0900 | 1 |
| 1200-1300 | 3 |
| 1300-1400 | 2 |
| 1400-1500 | 2 |
| 1500-1600 | 1 |
| 1600-1700 | 3 |
| 1700-1800 | 2 |
| 1800-1900 | 1 |
| 1900-2000 | 2 |
| 2000-2100 | 1 |
| 2300-2400 | 2 |




---

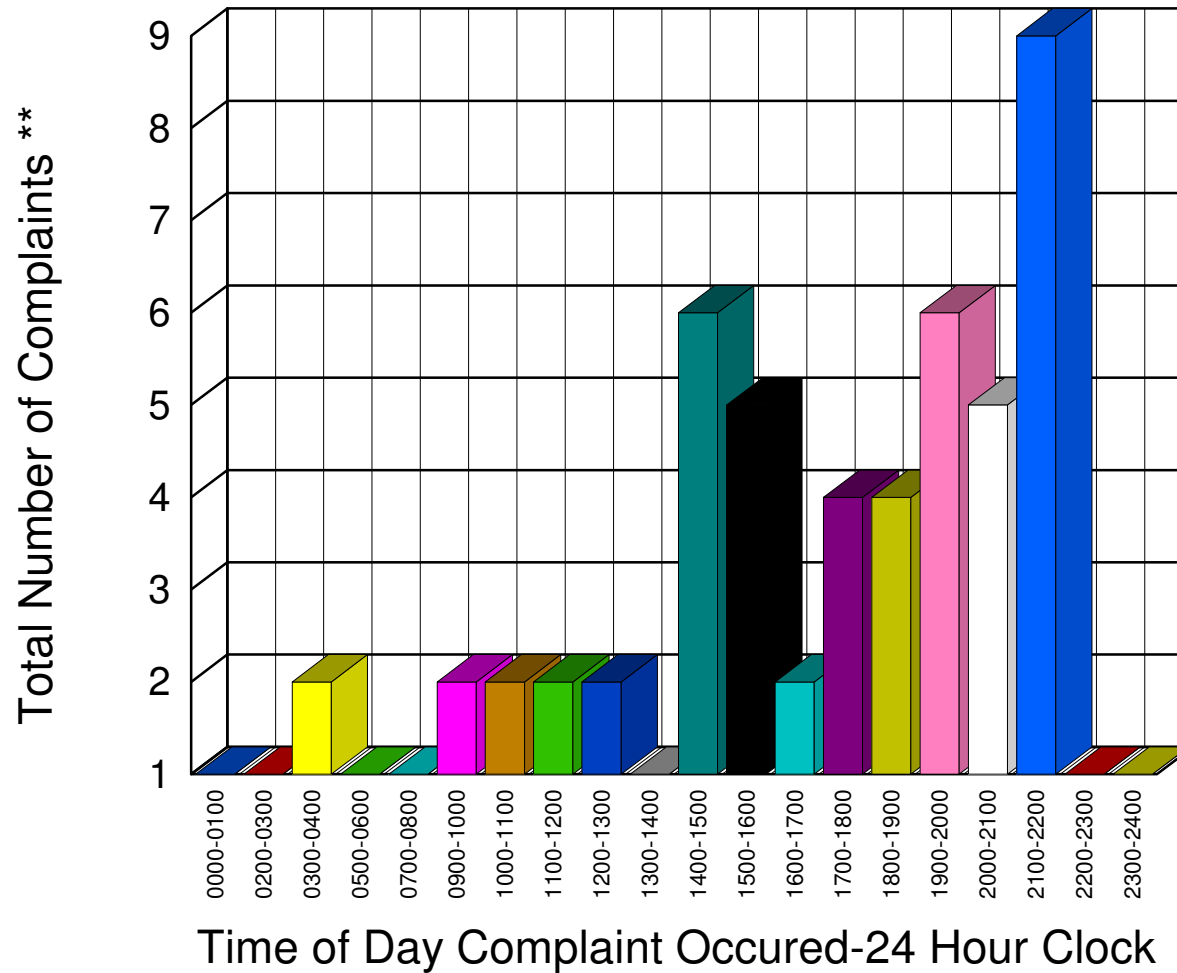
Total 31

\*\* Complaints taken by Muskegon Sheriff's Office

# Muskegon County Sheriff's Office

Listing of Offense Reports--Cedar Creek Township 06/01/2007 to 06/30/2007

|           |   |
|-----------|---|
| 0000-0100 | 1 |
| 0200-0300 | 1 |
| 0300-0400 | 2 |
| 0500-0600 | 1 |
| 0700-0800 | 1 |
| 0900-1000 | 2 |
| 1000-1100 | 2 |
| 1100-1200 | 2 |
| 1200-1300 | 2 |
| 1300-1400 | 1 |
| 1400-1500 | 6 |
| 1500-1600 | 5 |
| 1600-1700 | 2 |
| 1700-1800 | 4 |
| 1800-1900 | 4 |
| 1900-2000 | 6 |
| 2000-2100 | 5 |
| 2100-2200 | 9 |
| 2200-2300 | 1 |
| 2300-2400 | 1 |




---

Total 58

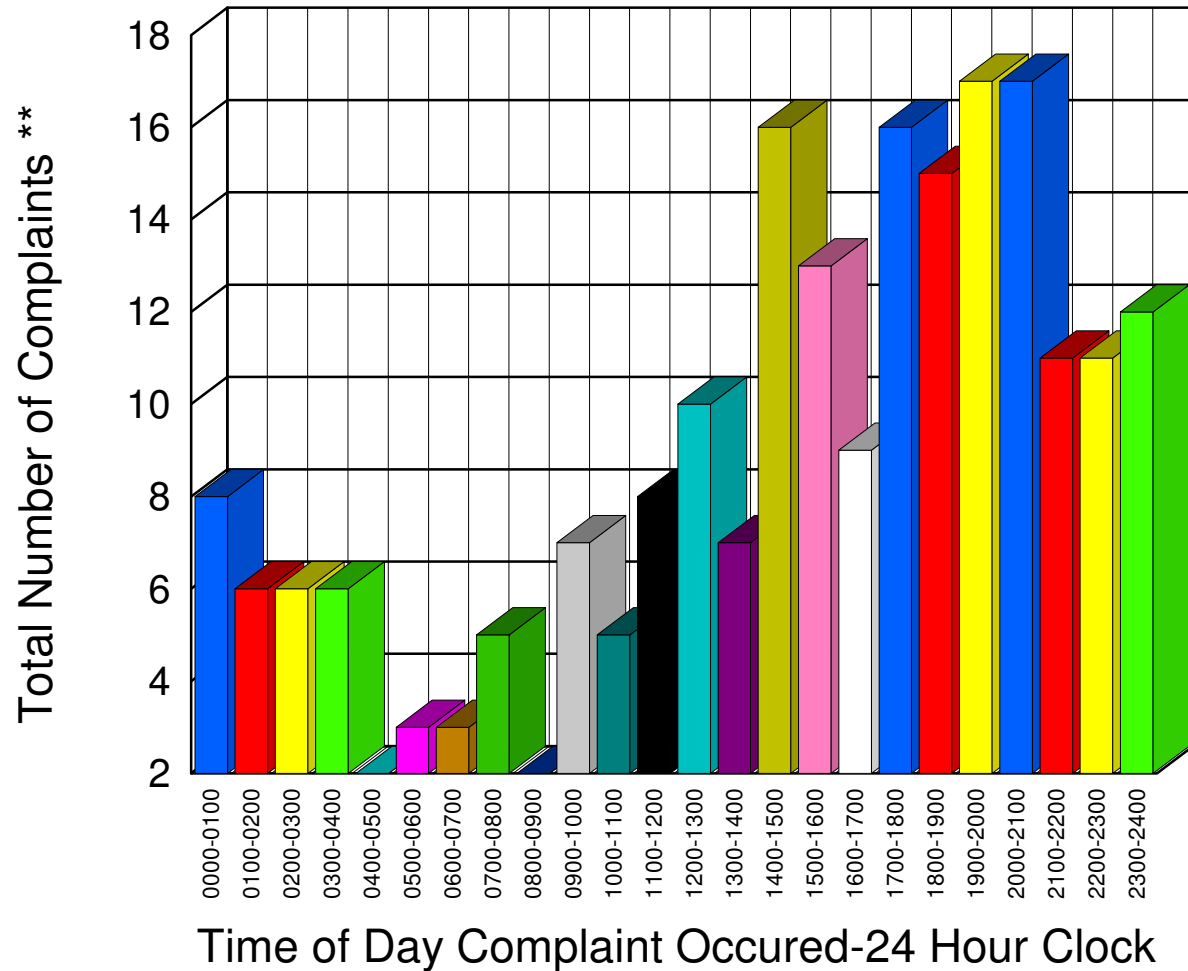
\*\* Complaints taken by Muskegon Sheriff's Office

# Muskegon County Sheriff's Office

Listing of Offense Reports--Lakewood Club and Dalton Township 06/01/2007 to 06/30/2007

|           |    |
|-----------|----|
| 0000-0100 | 8  |
| 0100-0200 | 6  |
| 0200-0300 | 6  |
| 0300-0400 | 6  |
| 0400-0500 | 2  |
| 0500-0600 | 3  |
| 0600-0700 | 3  |
| 0700-0800 | 5  |
| 0800-0900 | 2  |
| 0900-1000 | 7  |
| 1000-1100 | 5  |
| 1100-1200 | 8  |
| 1200-1300 | 10 |
| 1300-1400 | 7  |
| 1400-1500 | 16 |
| 1500-1600 | 13 |
| 1600-1700 | 9  |
| 1700-1800 | 16 |
| 1800-1900 | 15 |
| 1900-2000 | 17 |
| 2000-2100 | 17 |
| 2100-2200 | 11 |
| 2200-2300 | 11 |
| 2300-2400 | 12 |

Total 215

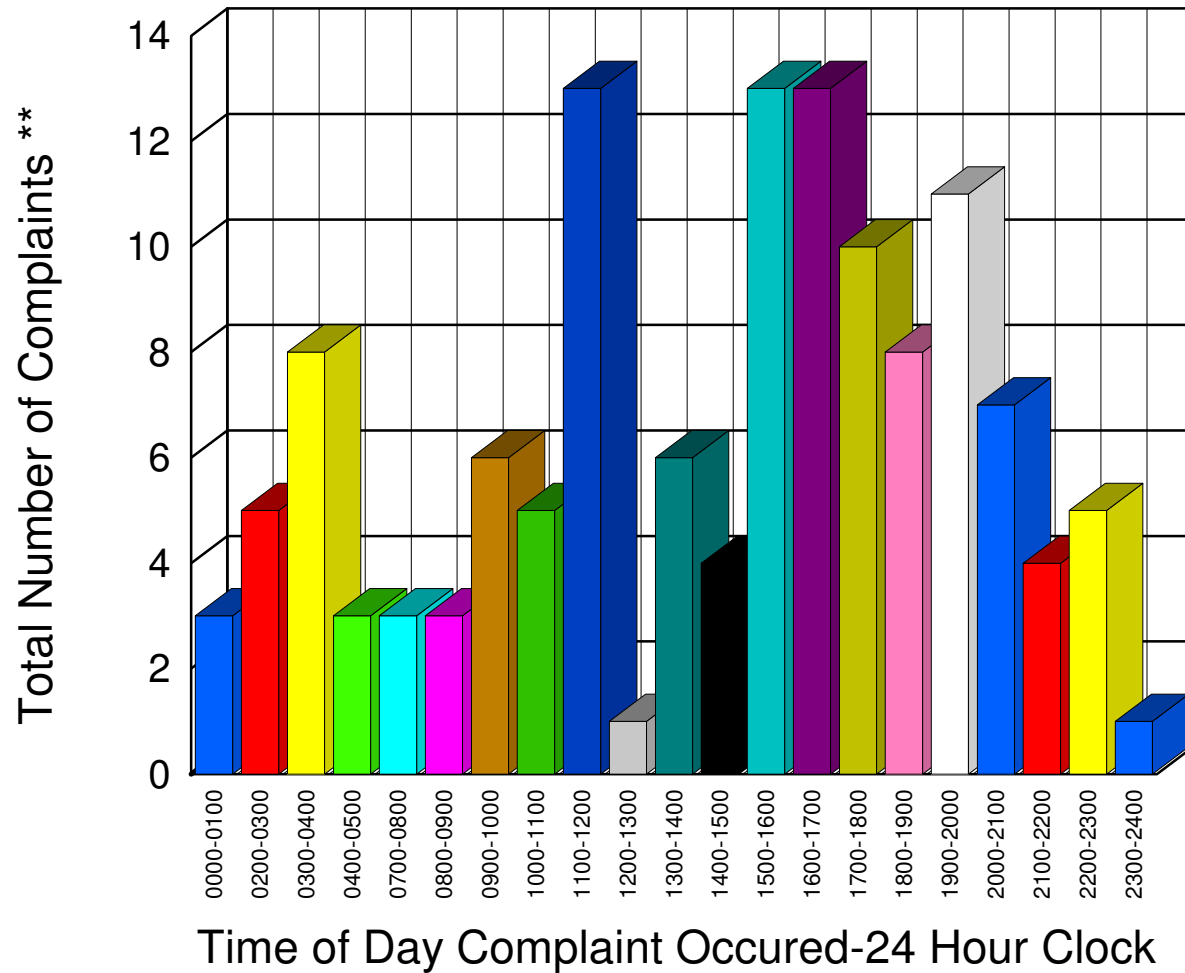


\*\* Complaints taken by Muskegon Sheriff's Office

# Muskegon County Sheriff's Office

Listing of Offense Reports--Egelston Township 06/01/2007 to 06/30/2007

|           |    |
|-----------|----|
| 0000-0100 | 3  |
| 0200-0300 | 5  |
| 0300-0400 | 8  |
| 0400-0500 | 3  |
| 0700-0800 | 3  |
| 0800-0900 | 3  |
| 0900-1000 | 6  |
| 1000-1100 | 5  |
| 1100-1200 | 13 |
| 1200-1300 | 1  |
| 1300-1400 | 6  |
| 1400-1500 | 4  |
| 1500-1600 | 13 |
| 1600-1700 | 13 |
| 1700-1800 | 10 |
| 1800-1900 | 8  |
| 1900-2000 | 11 |
| 2000-2100 | 7  |
| 2100-2200 | 4  |
| 2200-2300 | 5  |
| 2300-2400 | 1  |




---



---

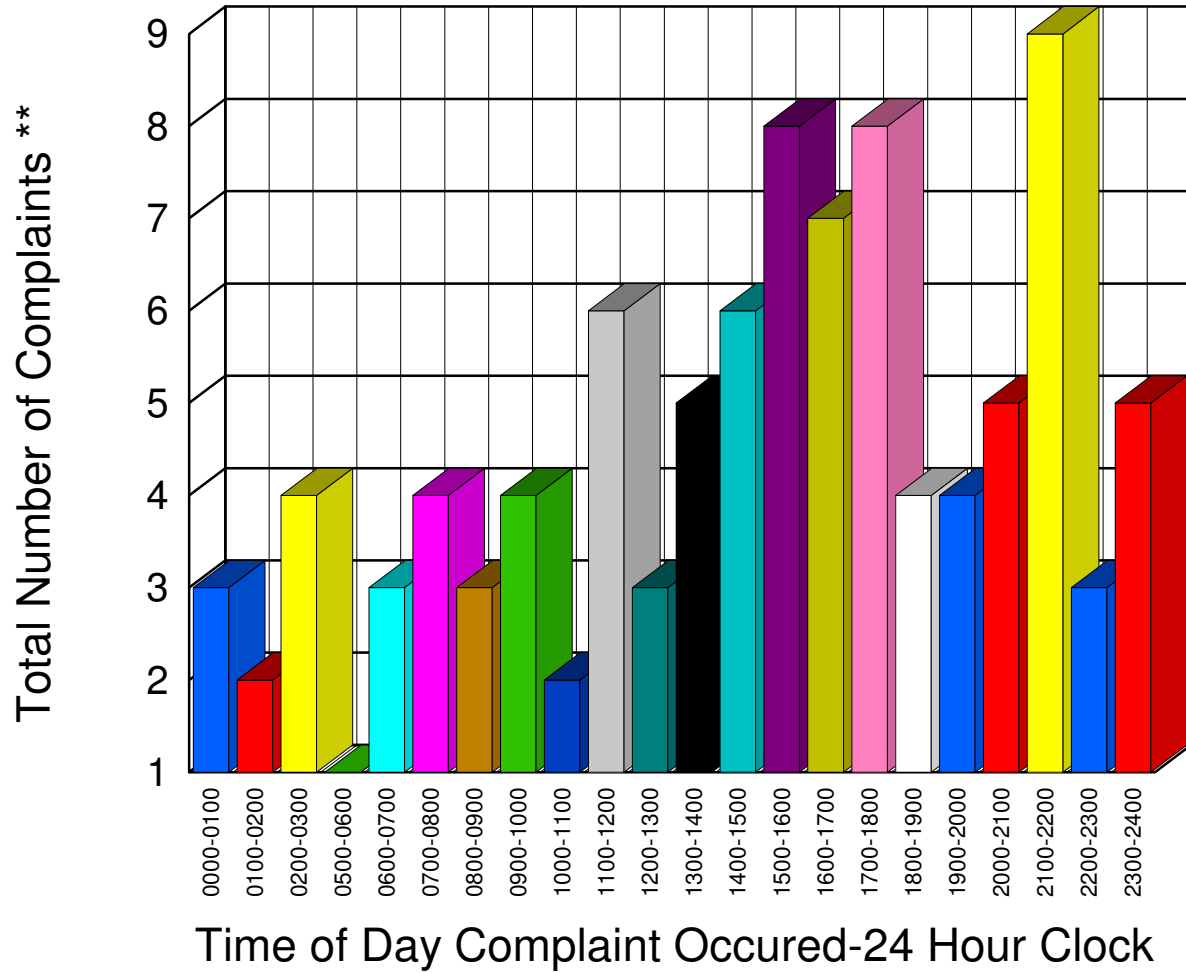
Total 132

\*\* Complaints taken by Muskegon Sheriff's Office

# Muskegon County Sheriff's Office

Listing of Offense Reports--Fruitland Township 06/02/2007 to 06/29/2007

|           |   |
|-----------|---|
| 0000-0100 | 3 |
| 0100-0200 | 2 |
| 0200-0300 | 4 |
| 0500-0600 | 1 |
| 0600-0700 | 3 |
| 0700-0800 | 4 |
| 0800-0900 | 3 |
| 0900-1000 | 4 |
| 1000-1100 | 2 |
| 1100-1200 | 6 |
| 1200-1300 | 3 |
| 1300-1400 | 5 |
| 1400-1500 | 6 |
| 1500-1600 | 8 |
| 1600-1700 | 7 |
| 1700-1800 | 8 |
| 1800-1900 | 4 |
| 1900-2000 | 4 |
| 2000-2100 | 5 |
| 2100-2200 | 9 |
| 2200-2300 | 3 |
| 2300-2400 | 5 |




---

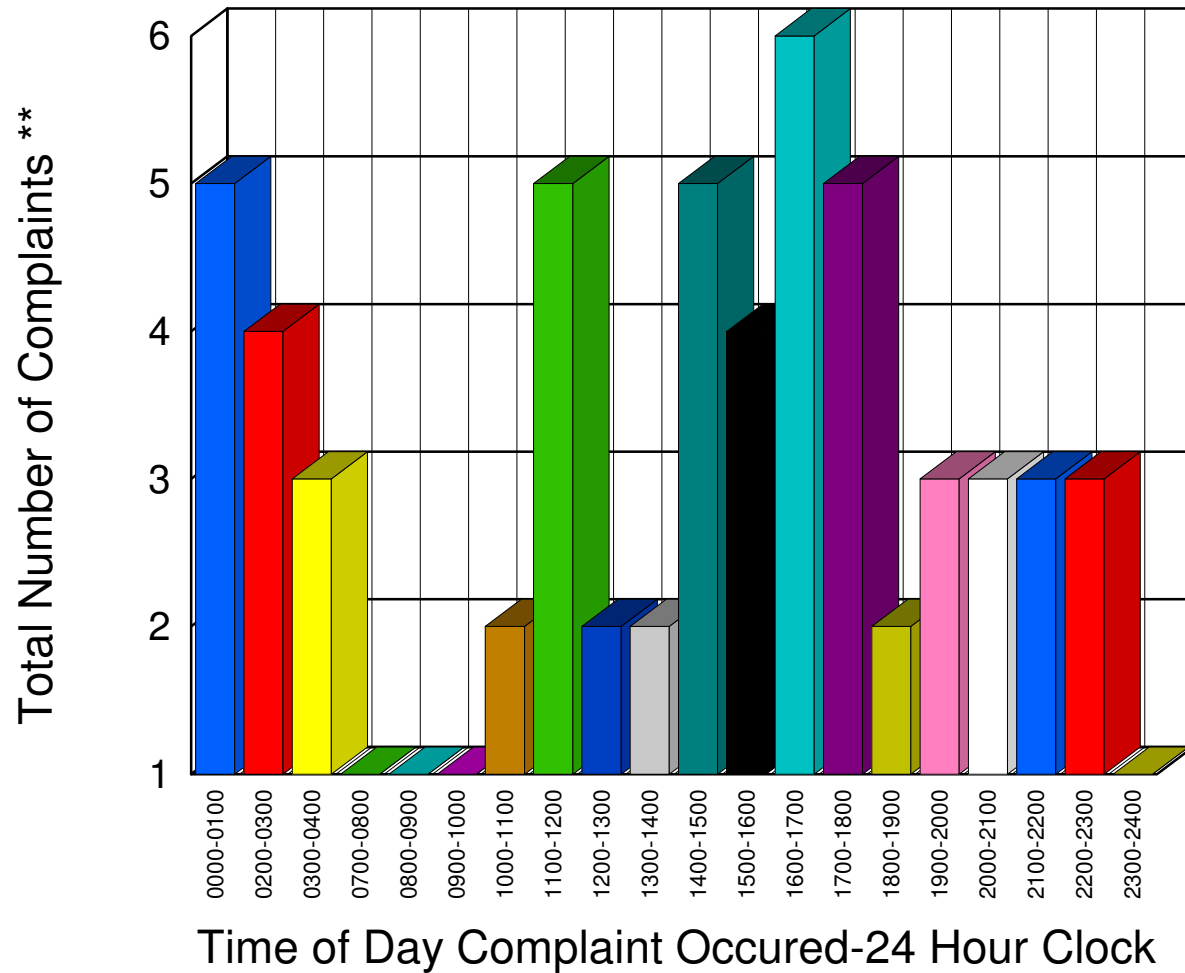
Total **99**

\*\* Complaints taken by Muskegon Sheriff's Office

# Muskegon County Sheriff's Office

Listing of Offense Reports--HoltonTownship 06/01/2007 to 06/30/2007

|           |   |
|-----------|---|
| 0000-0100 | 5 |
| 0200-0300 | 4 |
| 0300-0400 | 3 |
| 0700-0800 | 1 |
| 0800-0900 | 1 |
| 0900-1000 | 1 |
| 1000-1100 | 2 |
| 1100-1200 | 5 |
| 1200-1300 | 2 |
| 1300-1400 | 2 |
| 1400-1500 | 5 |
| 1500-1600 | 4 |
| 1600-1700 | 6 |
| 1700-1800 | 5 |
| 1800-1900 | 2 |
| 1900-2000 | 3 |
| 2000-2100 | 3 |
| 2100-2200 | 3 |
| 2200-2300 | 3 |
| 2300-2400 | 1 |




---

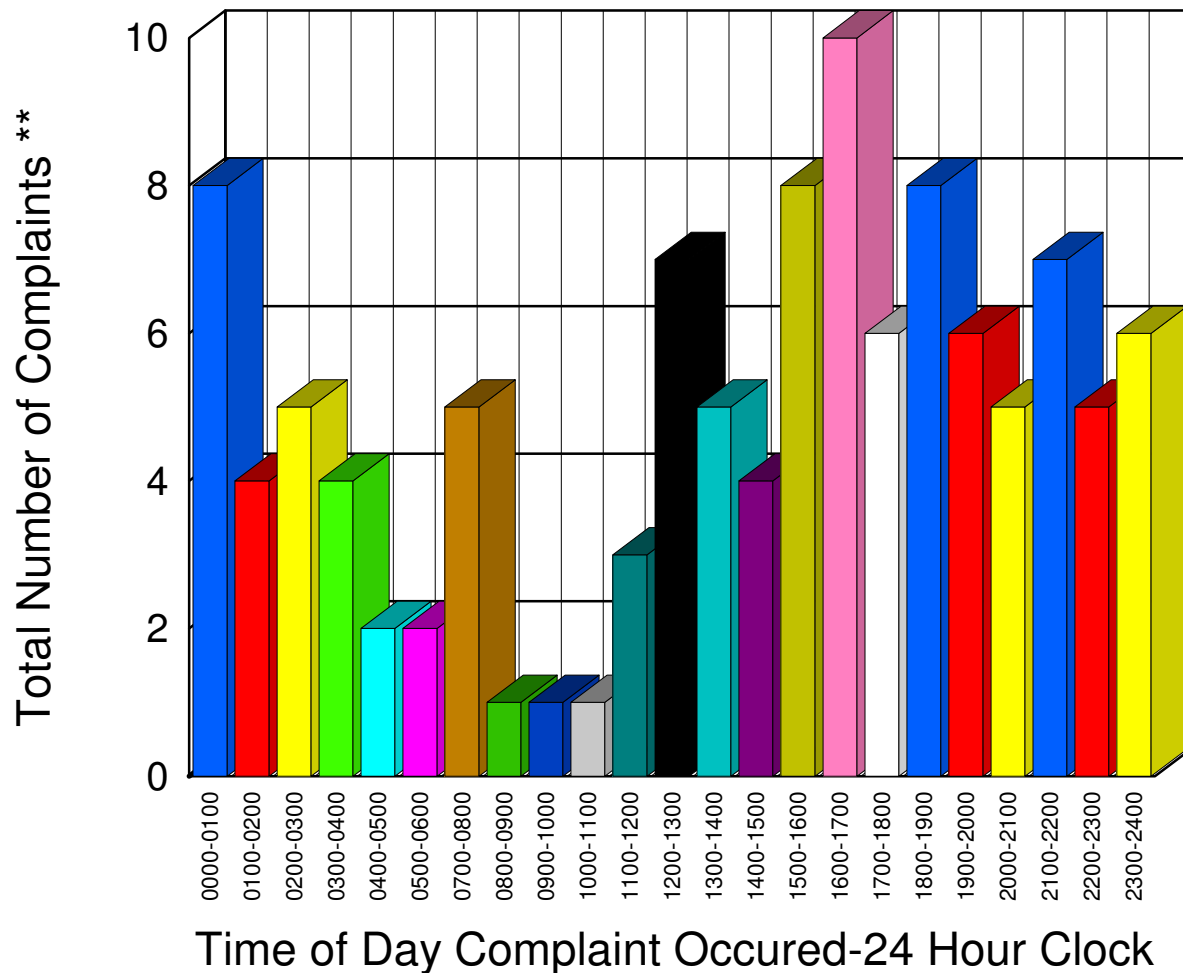
Total 61

\*\* Complaints taken by Muskegon Sheriff's Office

# Muskegon County Sheriff's Office

Listing of Offense Reports--Laketon Township 06/01/2007 to 06/30/2007

|           |    |
|-----------|----|
| 0000-0100 | 8  |
| 0100-0200 | 4  |
| 0200-0300 | 5  |
| 0300-0400 | 4  |
| 0400-0500 | 2  |
| 0500-0600 | 2  |
| 0700-0800 | 5  |
| 0800-0900 | 1  |
| 0900-1000 | 1  |
| 1000-1100 | 1  |
| 1100-1200 | 3  |
| 1200-1300 | 7  |
| 1300-1400 | 5  |
| 1400-1500 | 4  |
| 1500-1600 | 8  |
| 1600-1700 | 10 |
| 1700-1800 | 6  |
| 1800-1900 | 8  |
| 1900-2000 | 6  |
| 2000-2100 | 5  |
| 2100-2200 | 7  |
| 2200-2300 | 5  |
| 2300-2400 | 6  |



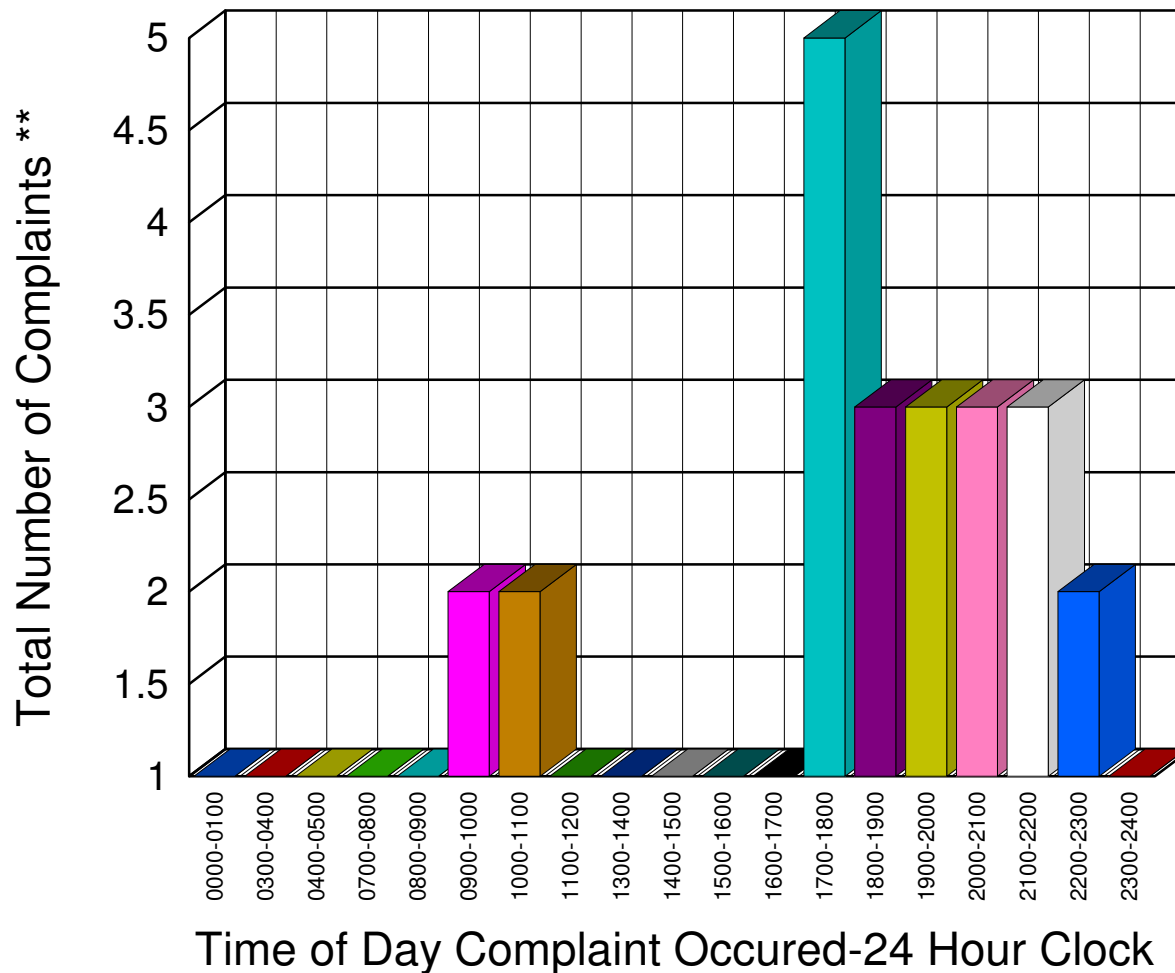
Total 113

\*\* Complaints taken by Muskegon Sheriff's Office

# Muskegon County Sheriff's Office

Listing of Offense Reports--Montague Township 06/01/2007 to 06/30/2007

|           |   |
|-----------|---|
| 0000-0100 | 1 |
| 0300-0400 | 1 |
| 0400-0500 | 1 |
| 0700-0800 | 1 |
| 0800-0900 | 1 |
| 0900-1000 | 2 |
| 1000-1100 | 2 |
| 1100-1200 | 1 |
| 1300-1400 | 1 |
| 1400-1500 | 1 |
| 1500-1600 | 1 |
| 1600-1700 | 1 |
| 1700-1800 | 5 |
| 1800-1900 | 3 |
| 1900-2000 | 3 |
| 2000-2100 | 3 |
| 2100-2200 | 3 |
| 2200-2300 | 2 |
| 2300-2400 | 1 |




---

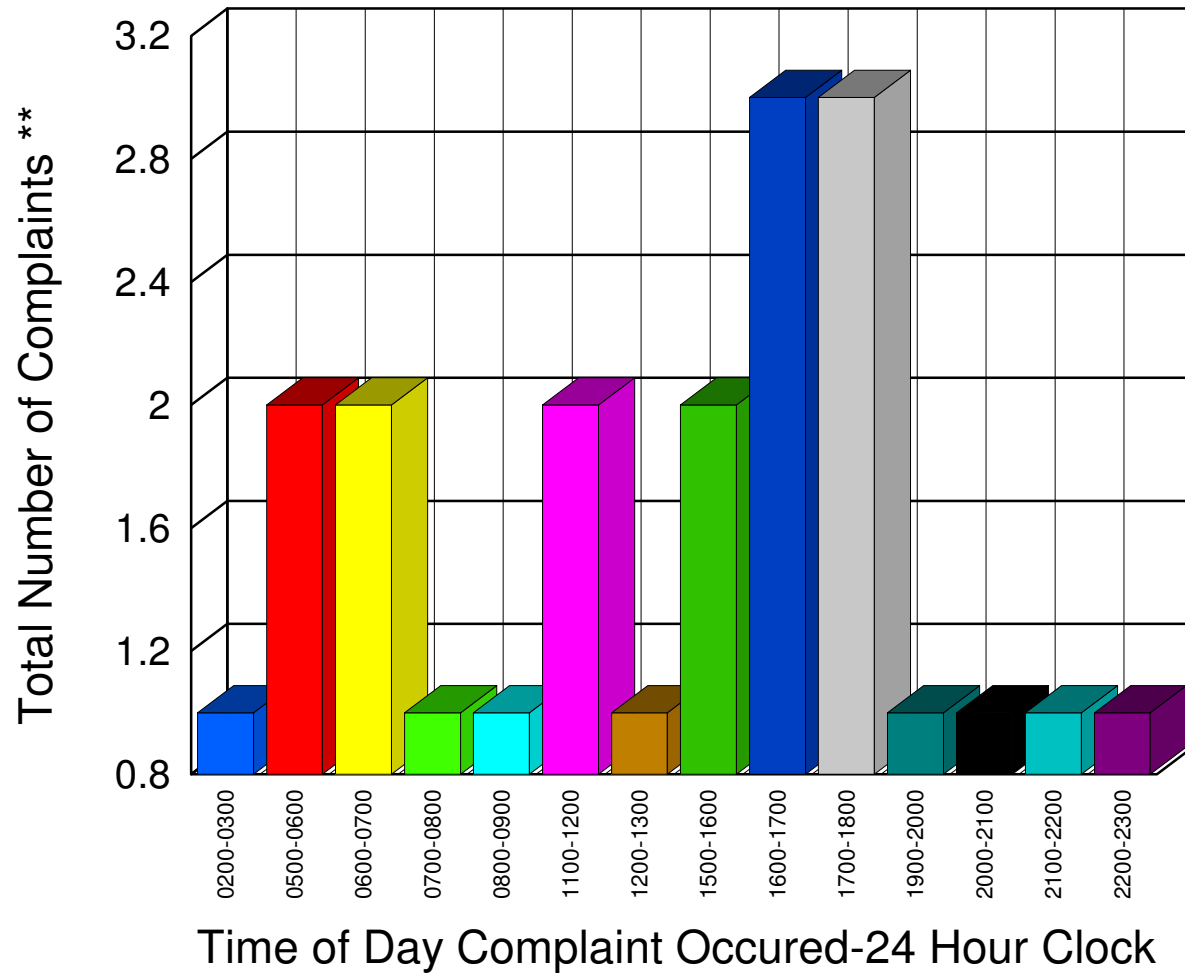
Total 34

\*\* Complaints taken by Muskegon Sheriff's Office

# Muskegon County Sheriff's Office

Listing of Offense Reports--Moorland Township 06/04/2007 to 06/30/2007

|           |   |
|-----------|---|
| 0200-0300 | 1 |
| 0500-0600 | 2 |
| 0600-0700 | 2 |
| 0700-0800 | 1 |
| 0800-0900 | 1 |
| 1100-1200 | 2 |
| 1200-1300 | 1 |
| 1500-1600 | 2 |
| 1600-1700 | 3 |
| 1700-1800 | 3 |
| 1900-2000 | 1 |
| 2000-2100 | 1 |
| 2100-2200 | 1 |
| 2200-2300 | 1 |




---

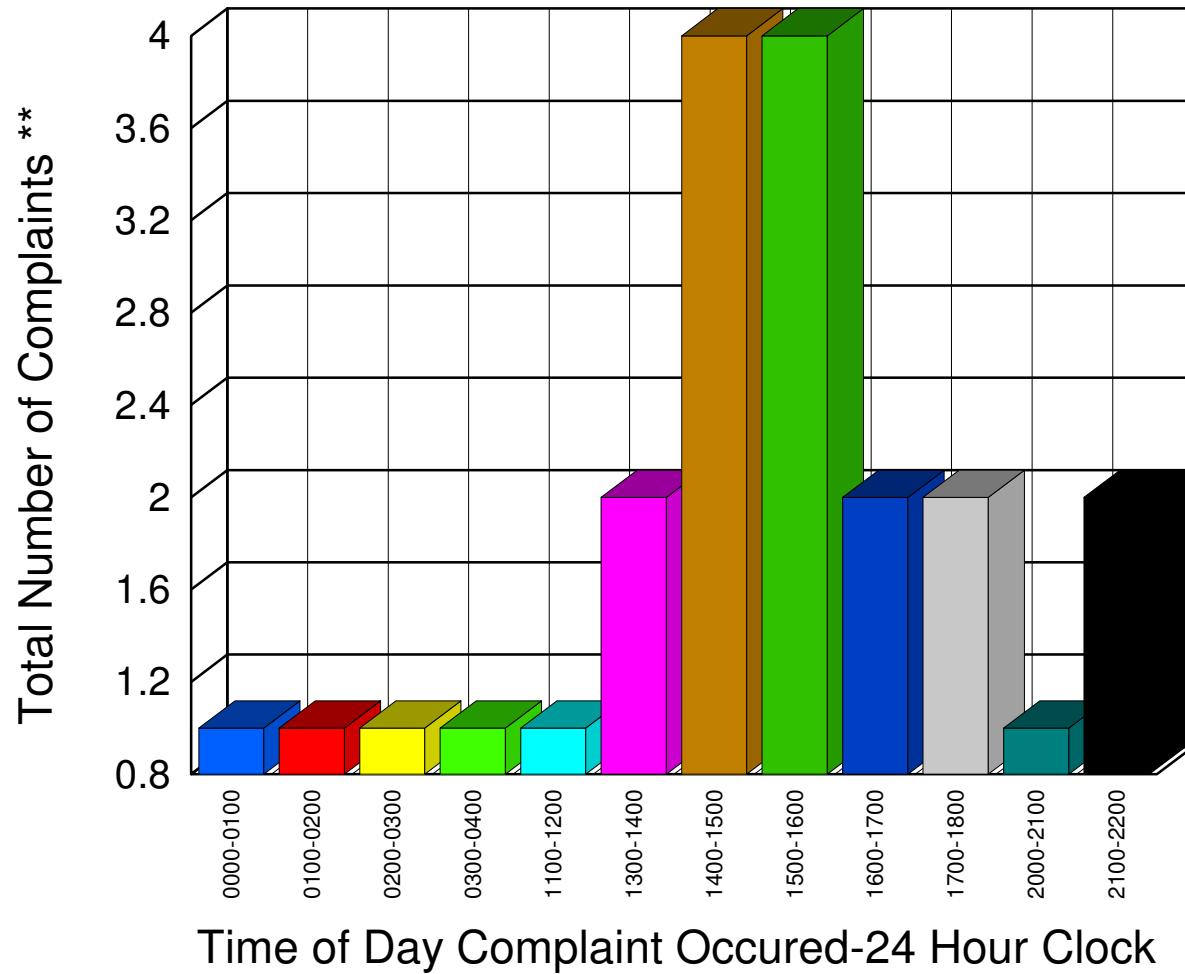
Total **22**

\*\* Complaints taken by Muskegon Sheriff's Office

# Muskegon County Sheriff's Office

Listing of Offense Reports--Ravenna and Ravenna Township 06/04/2007 to 06/30/2007

|           |   |
|-----------|---|
| 0000-0100 | 1 |
| 0100-0200 | 1 |
| 0200-0300 | 1 |
| 0300-0400 | 1 |
| 1100-1200 | 1 |
| 1300-1400 | 2 |
| 1400-1500 | 4 |
| 1500-1600 | 4 |
| 1600-1700 | 2 |
| 1700-1800 | 2 |
| 2000-2100 | 1 |
| 2100-2200 | 2 |




---



---

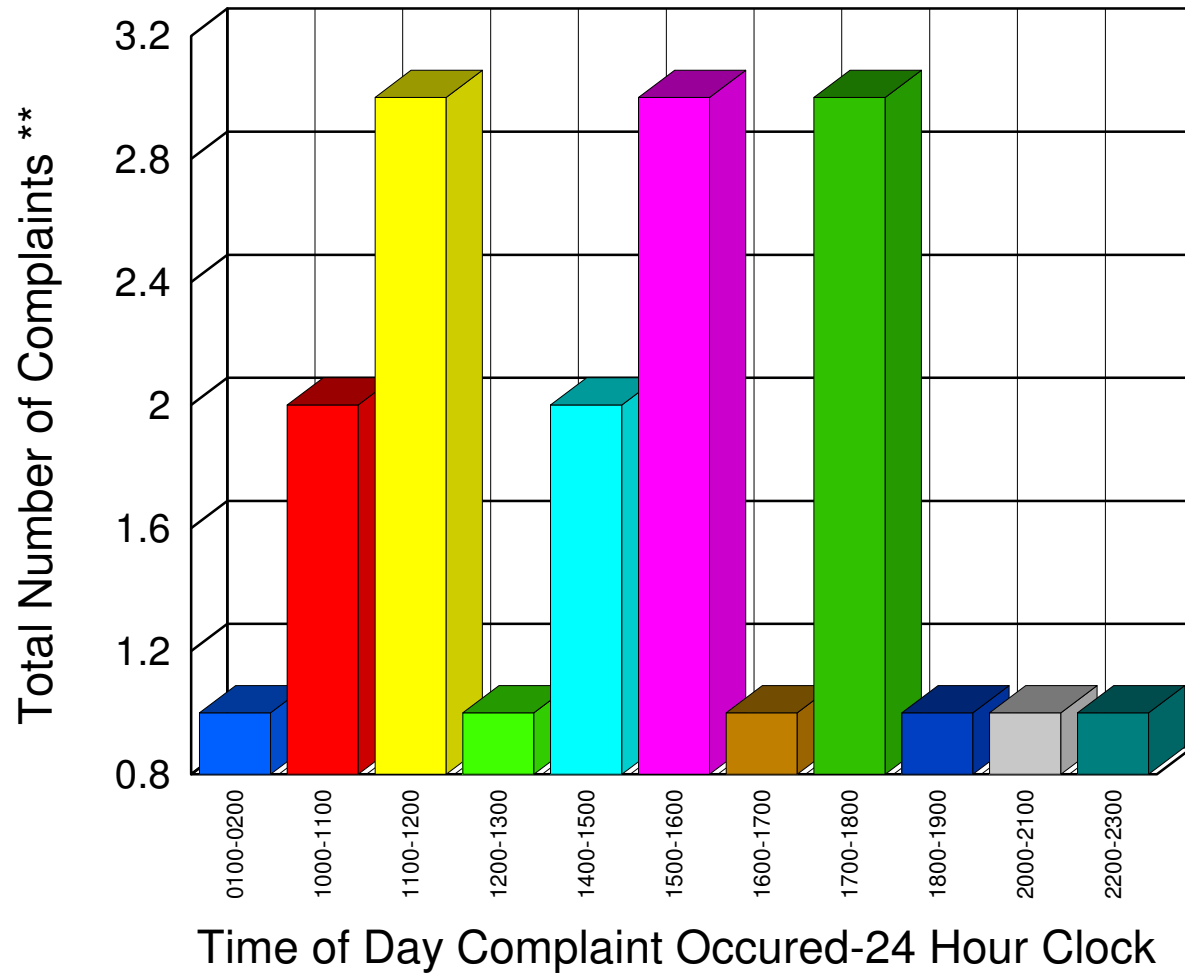
|       |    |
|-------|----|
| Total | 22 |
|-------|----|

\*\* Complaints taken by Muskegon Sheriff's Office

# Muskegon County Sheriff's Office

Listing of Offense Reports--Sullivan Township 06/05/2007 to 06/30/2007

|           |   |
|-----------|---|
| 0100-0200 | 1 |
| 1000-1100 | 2 |
| 1100-1200 | 3 |
| 1200-1300 | 1 |
| 1400-1500 | 2 |
| 1500-1600 | 3 |
| 1600-1700 | 1 |
| 1700-1800 | 3 |
| 1800-1900 | 1 |
| 2000-2100 | 1 |
| 2200-2300 | 1 |




---

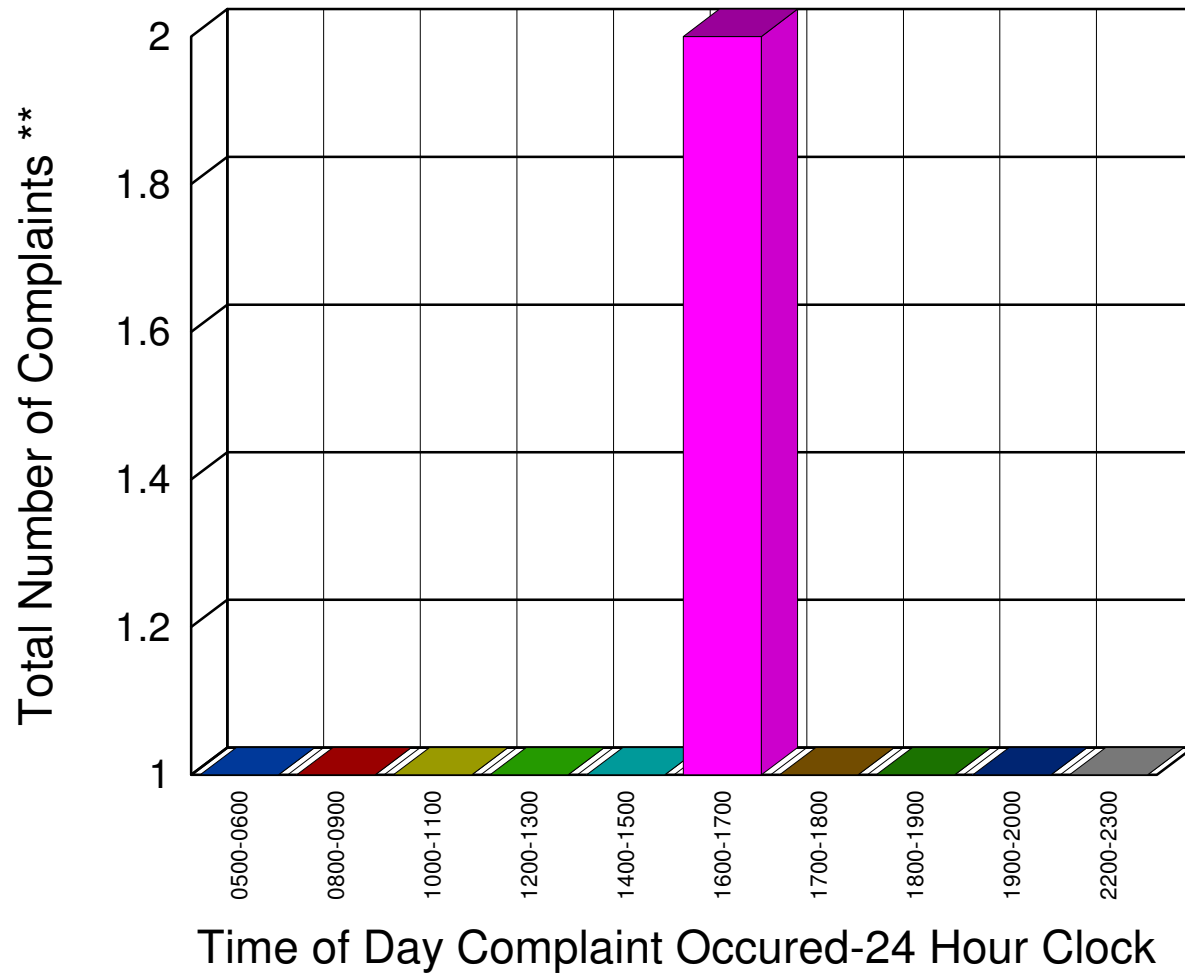
Total **19**

\*\* Complaints taken by Muskegon Sheriff's Office

# Muskegon County Sheriff's Office

Listing of Offense Reports--White River Township 06/02/2007 to 06/26/2007

|           |   |
|-----------|---|
| 0500-0600 | 1 |
| 0800-0900 | 1 |
| 1000-1100 | 1 |
| 1200-1300 | 1 |
| 1400-1500 | 1 |
| 1600-1700 | 2 |
| 1700-1800 | 1 |
| 1800-1900 | 1 |
| 1900-2000 | 1 |
| 2200-2300 | 1 |




---



---

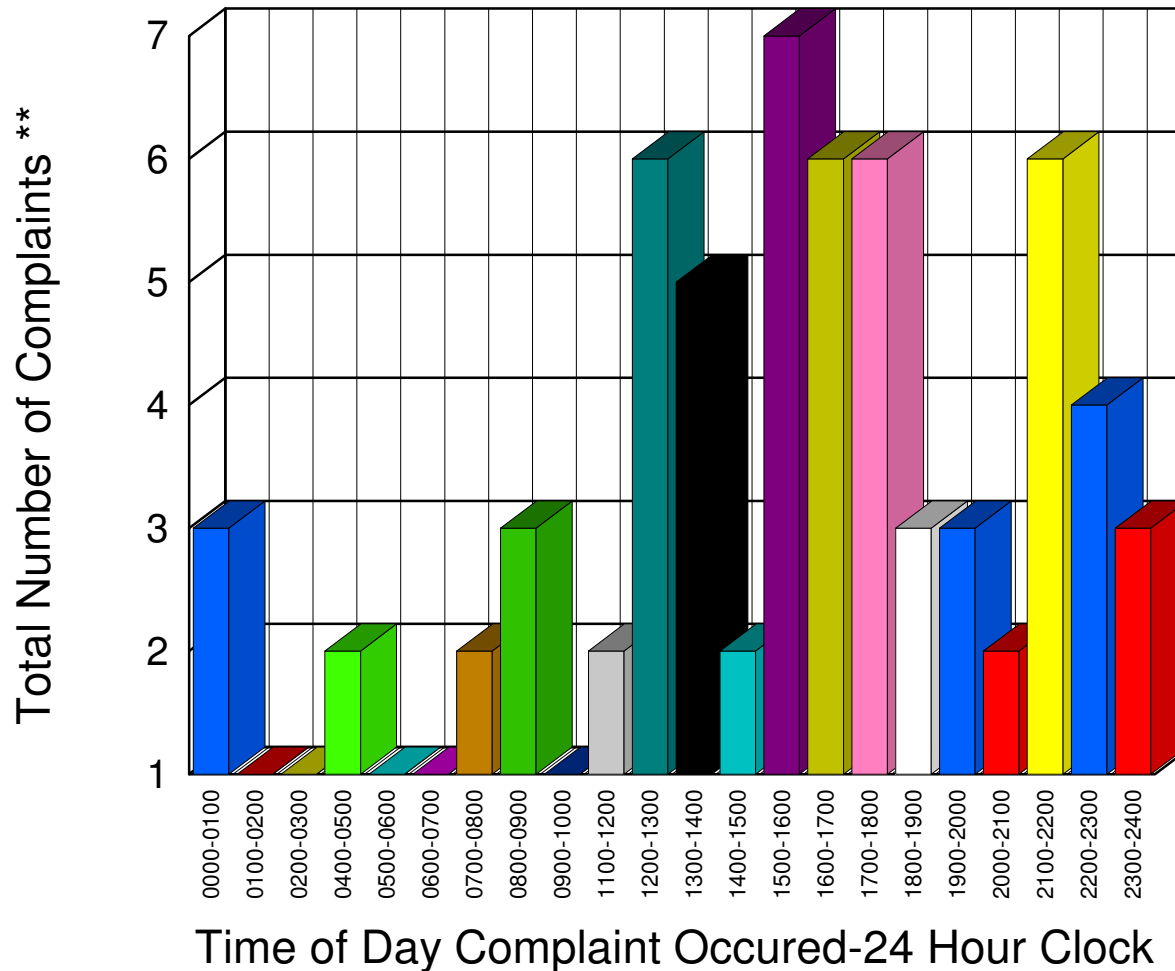
|       |    |
|-------|----|
| Total | 11 |
|-------|----|

\*\* Complaints taken by Muskegon Sheriff's Office

# Muskegon County Sheriff's Office

Listing of Offense Reports--Whitehall Township 06/01/2007 to 06/30/2007

|           |   |
|-----------|---|
| 0000-0100 | 3 |
| 0100-0200 | 1 |
| 0200-0300 | 1 |
| 0400-0500 | 2 |
| 0500-0600 | 1 |
| 0600-0700 | 1 |
| 0700-0800 | 2 |
| 0800-0900 | 3 |
| 0900-1000 | 1 |
| 1100-1200 | 2 |
| 1200-1300 | 6 |
| 1300-1400 | 5 |
| 1400-1500 | 2 |
| 1500-1600 | 7 |
| 1600-1700 | 6 |
| 1700-1800 | 6 |
| 1800-1900 | 3 |
| 1900-2000 | 3 |
| 2000-2100 | 2 |
| 2100-2200 | 6 |
| 2200-2300 | 4 |
| 2300-2400 | 3 |




---



---

Total 70

\*\* Complaints taken by Muskegon Sheriff's Office