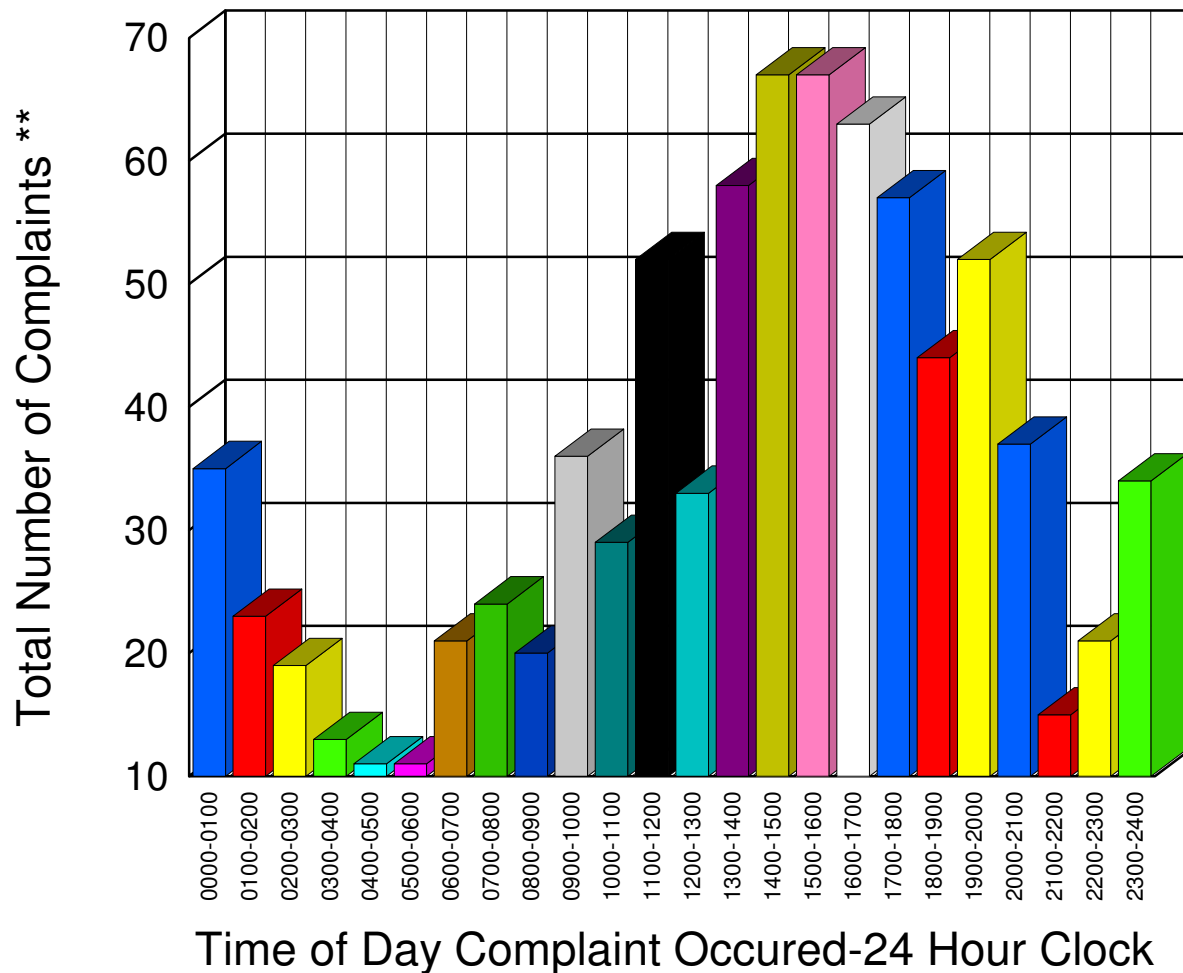


# Muskegon County Sheriff's Office

Listing of Offense Reports-- 03/01/2006 to 03/31/2006

0000-0100	35
0100-0200	23
0200-0300	19
0300-0400	13
0400-0500	11
0500-0600	11
0600-0700	21
0700-0800	24
0800-0900	20
0900-1000	36
1000-1100	29
1100-1200	52
1200-1300	33
1300-1400	58
1400-1500	67
1500-1600	67
1600-1700	63
1700-1800	57
1800-1900	44
1900-2000	52
2000-2100	37
2100-2200	15
2200-2300	21
2300-2400	34
<hr/>	
<hr/>	
Total	842

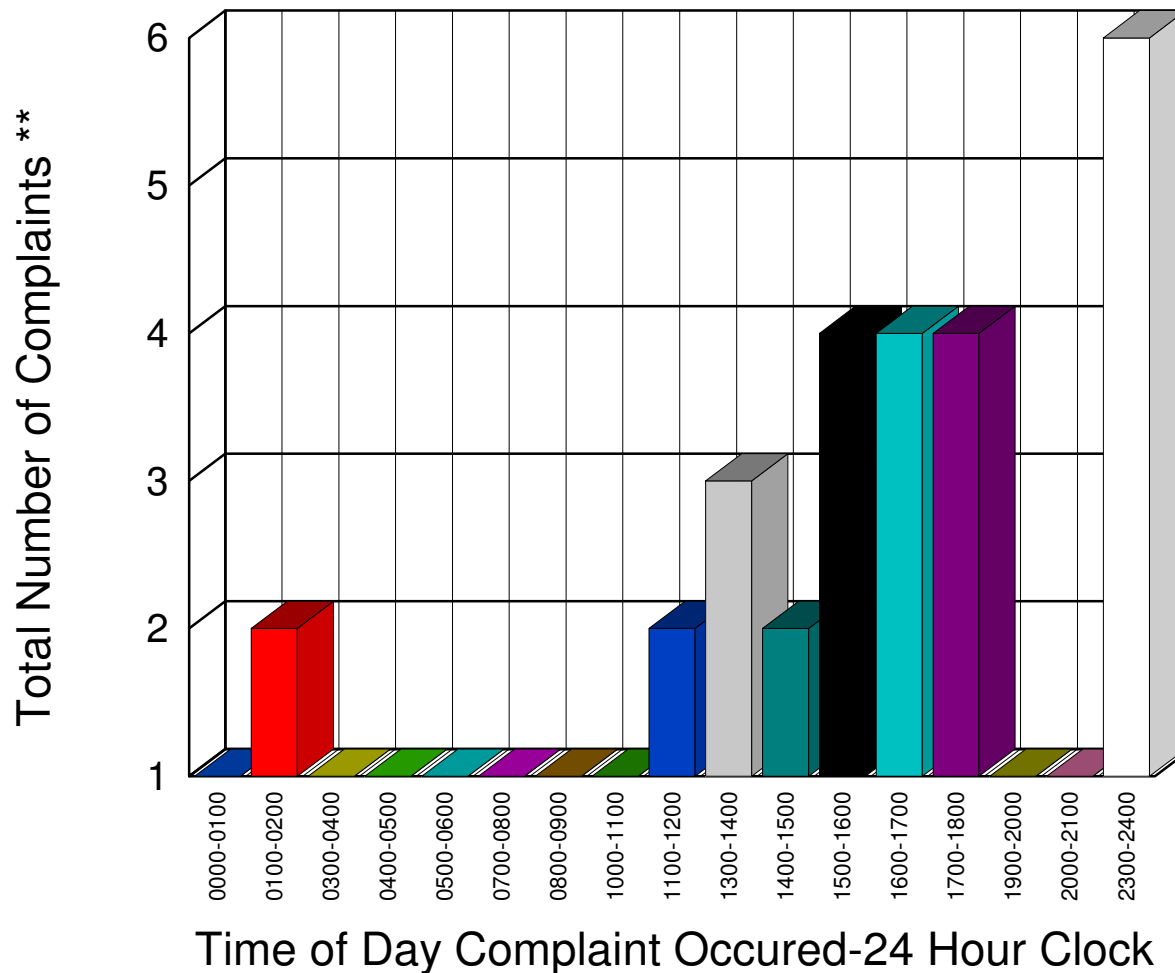


\*\* Complaints taken by Muskegon Sheriff's Office

# Muskegon County Sheriff's Office

Listing of Offense Reports--Blue Lake Township 03/03/2006 to 03/31/2006

0000-0100	1
0100-0200	2
0300-0400	1
0400-0500	1
0500-0600	1
0700-0800	1
0800-0900	1
1000-1100	1
1100-1200	2
1300-1400	3
1400-1500	2
1500-1600	4
1600-1700	4
1700-1800	4
1900-2000	1
2000-2100	1
2300-2400	6




---

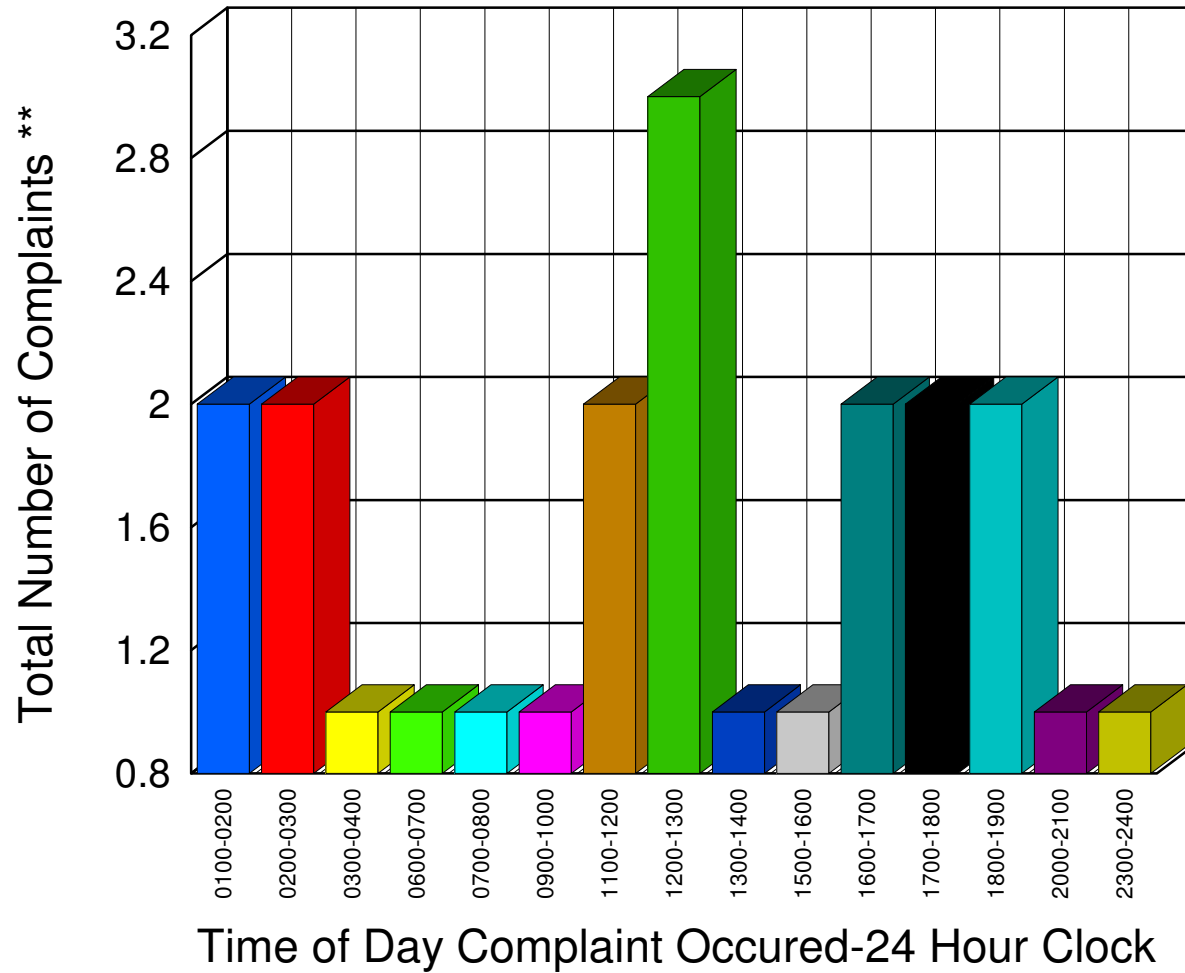
Total **36**

\*\* Complaints taken by Muskegon Sheriff's Office

# Muskegon County Sheriff's Office

Listing of Offense Reports--Casnovia and Casnovia Township 03/03/2006 to 03/31/2006

0100-0200	2
0200-0300	2
0300-0400	1
0600-0700	1
0700-0800	1
0900-1000	1
1100-1200	2
1200-1300	3
1300-1400	1
1500-1600	1
1600-1700	2
1700-1800	2
1800-1900	2
2000-2100	1
2300-2400	1




---

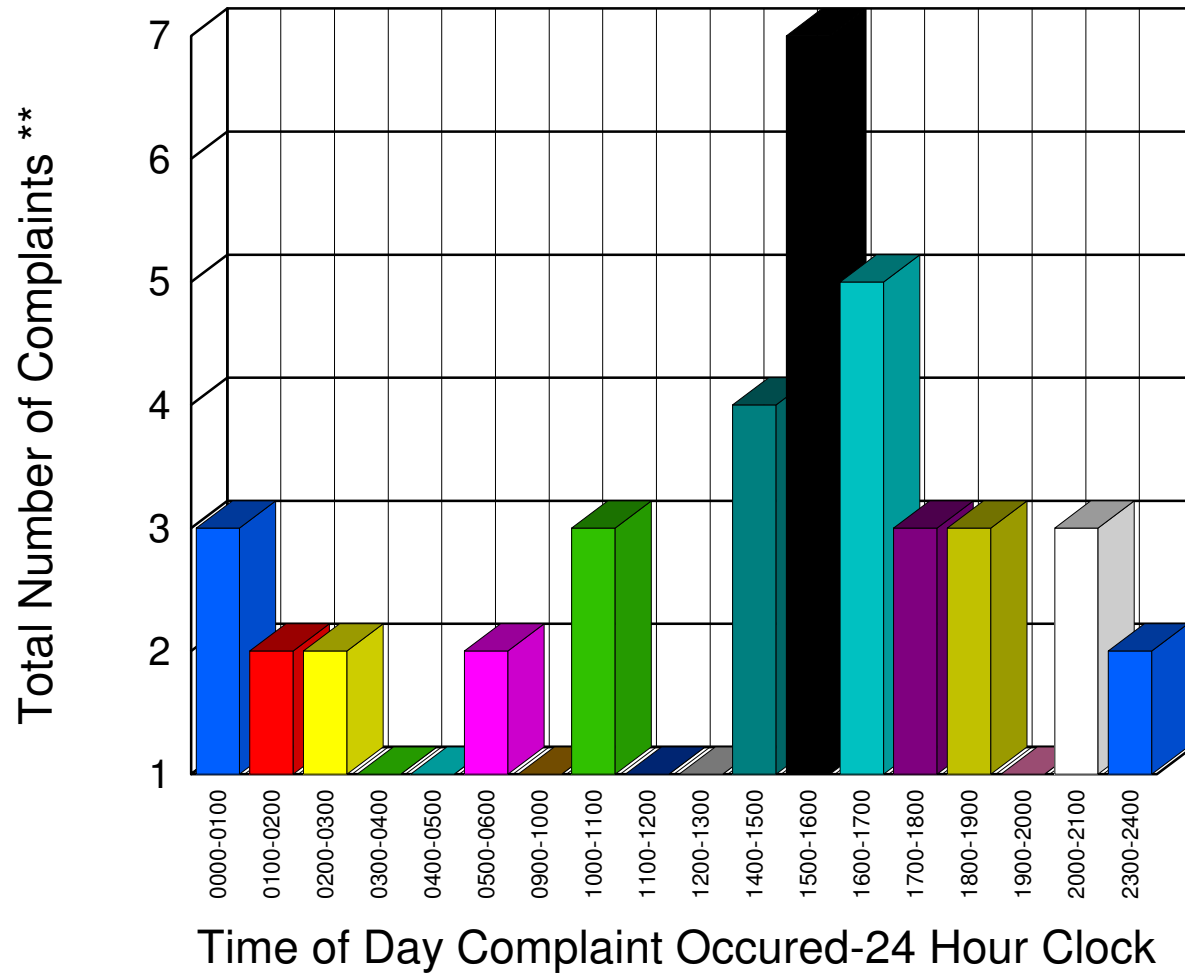
Total **23**

\*\* Complaints taken by Muskegon Sheriff's Office

# Muskegon County Sheriff's Office

Listing of Offense Reports--Cedar Creek Township 03/01/2006 to 03/31/2006

0000-0100	3
0100-0200	2
0200-0300	2
0300-0400	1
0400-0500	1
0500-0600	2
0900-1000	1
1000-1100	3
1100-1200	1
1200-1300	1
1400-1500	4
1500-1600	7
1600-1700	5
1700-1800	3
1800-1900	3
1900-2000	1
2000-2100	3
2300-2400	2




---

Total 45

\*\* Complaints taken by Muskegon Sheriff's Office

# Muskegon County Sheriff's Office

Listing of Offense Reports--Lakewood Club and Dalton Township 03/01/2006 to 03/31/2006

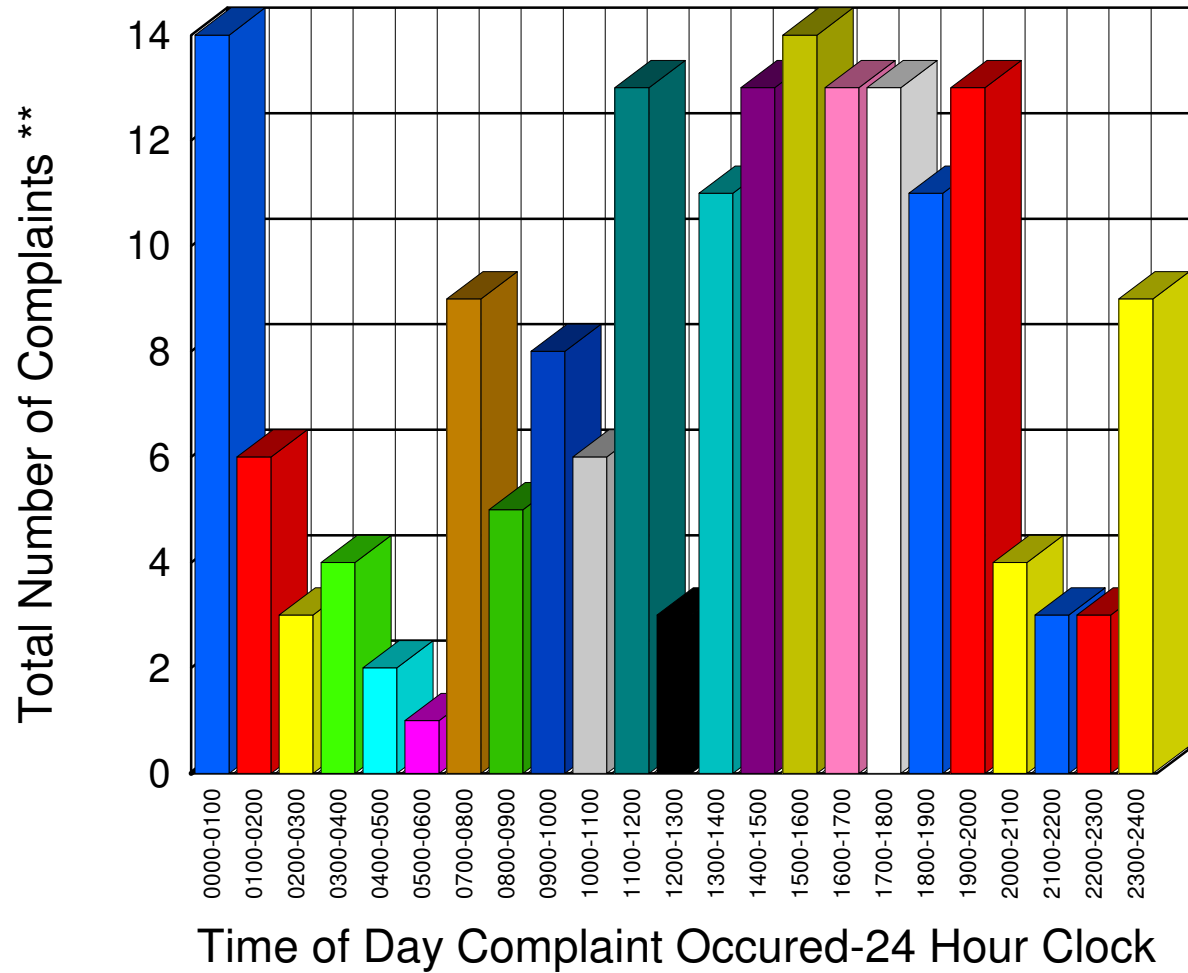
0000-0100	14
0100-0200	6
0200-0300	3
0300-0400	4
0400-0500	2
0500-0600	1
0700-0800	9
0800-0900	5
0900-1000	8
1000-1100	6
1100-1200	13
1200-1300	3
1300-1400	11
1400-1500	13
1500-1600	14
1600-1700	13
1700-1800	13
1800-1900	11
1900-2000	13
2000-2100	4
2100-2200	3
2200-2300	3
2300-2400	9

---



---

Total 181



\*\* Complaints taken by Muskegon Sheriff's Office

# Muskegon County Sheriff's Office

Listing of Offense Reports--Egelston Township 03/01/2006 to 03/31/2006

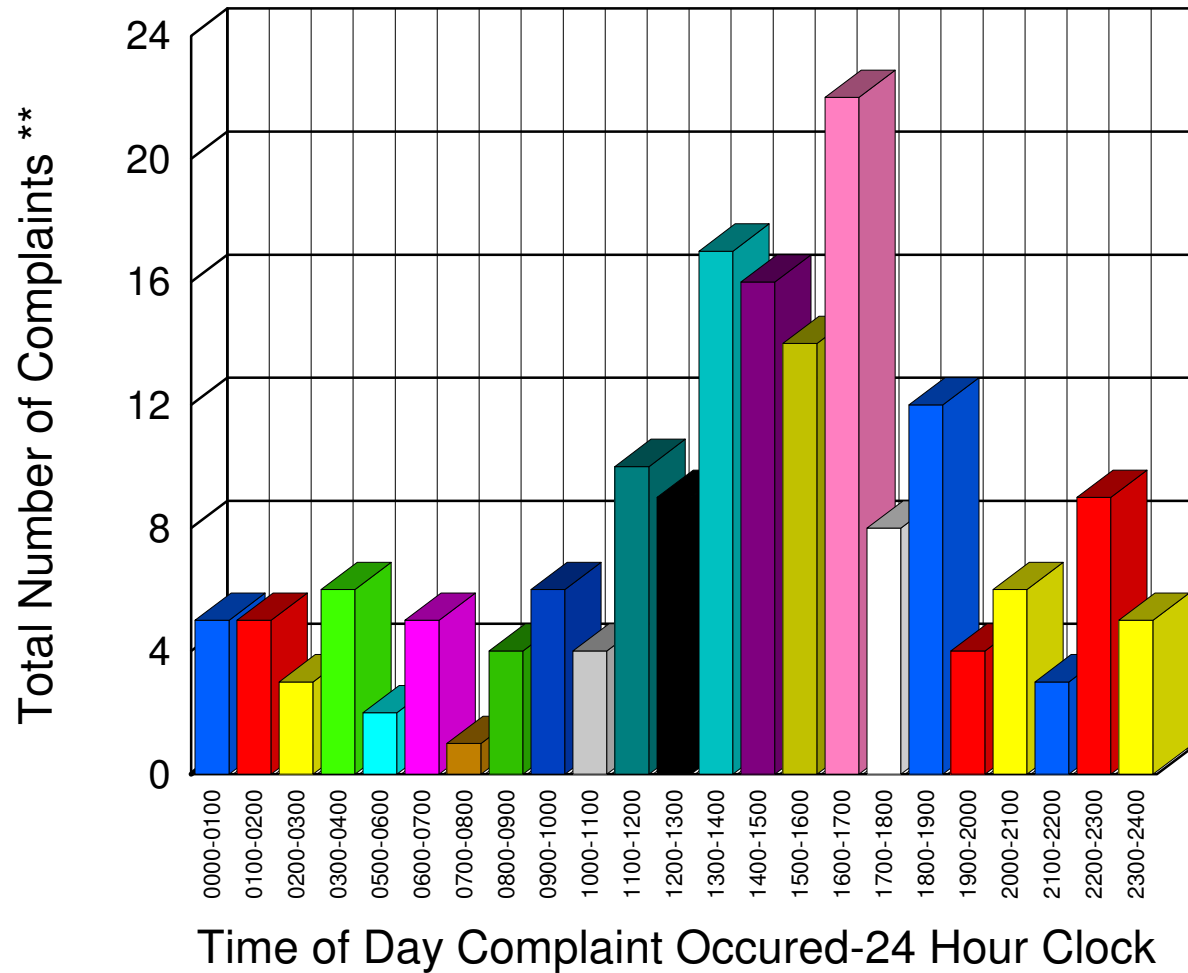
0000-0100	5
0100-0200	5
0200-0300	3
0300-0400	6
0500-0600	2
0600-0700	5
0700-0800	1
0800-0900	4
0900-1000	6
1000-1100	4
1100-1200	10
1200-1300	9
1300-1400	17
1400-1500	16
1500-1600	14
1600-1700	22
1700-1800	8
1800-1900	12
1900-2000	4
2000-2100	6
2100-2200	3
2200-2300	9
2300-2400	5

---



---

Total 176

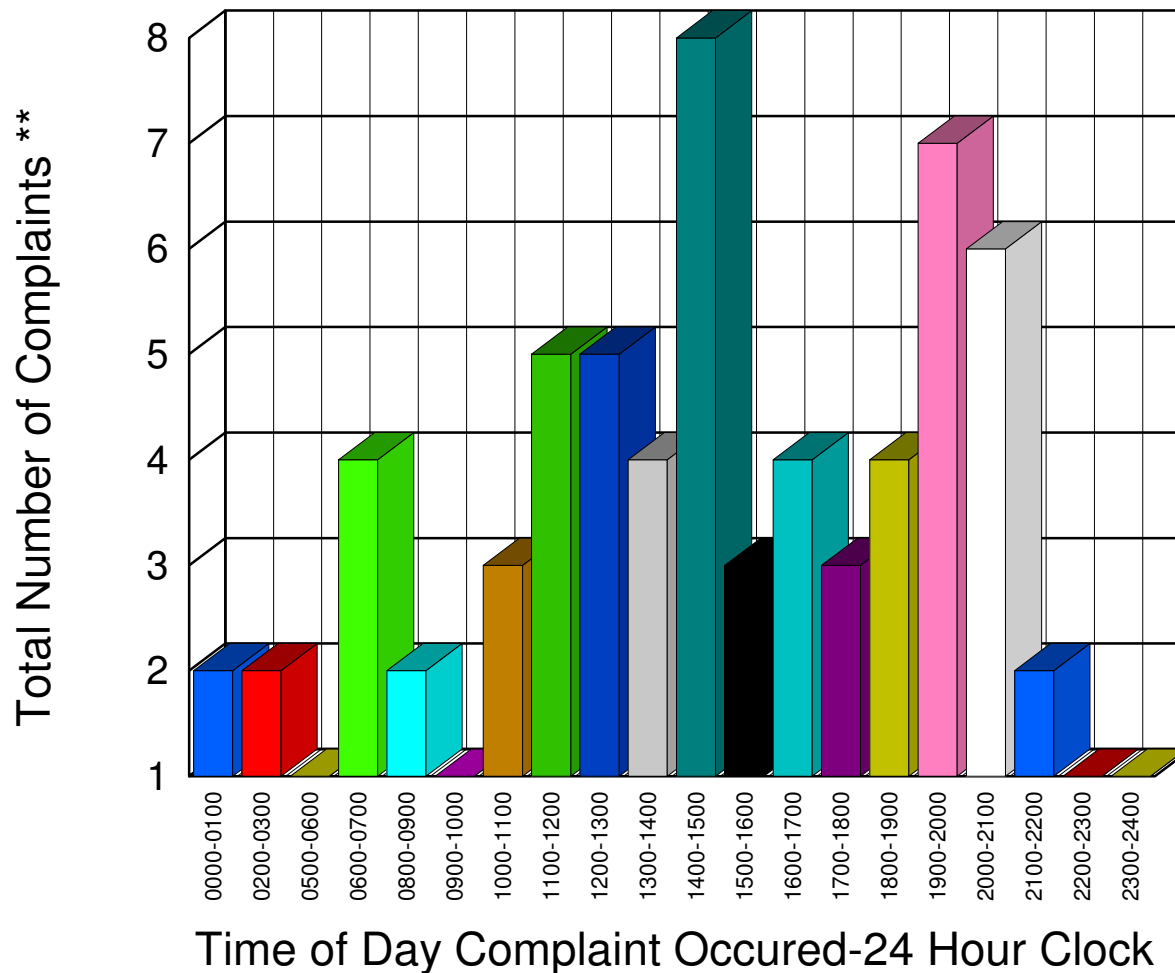


\*\* Complaints taken by Muskegon Sheriff's Office

# Muskegon County Sheriff's Office

Listing of Offense Reports--Fruitland Township 03/01/2006 to 03/31/2006

0000-0100	2
0200-0300	2
0500-0600	1
0600-0700	4
0800-0900	2
0900-1000	1
1000-1100	3
1100-1200	5
1200-1300	5
1300-1400	4
1400-1500	8
1500-1600	3
1600-1700	4
1700-1800	3
1800-1900	4
1900-2000	7
2000-2100	6
2100-2200	2
2200-2300	1
2300-2400	1




---

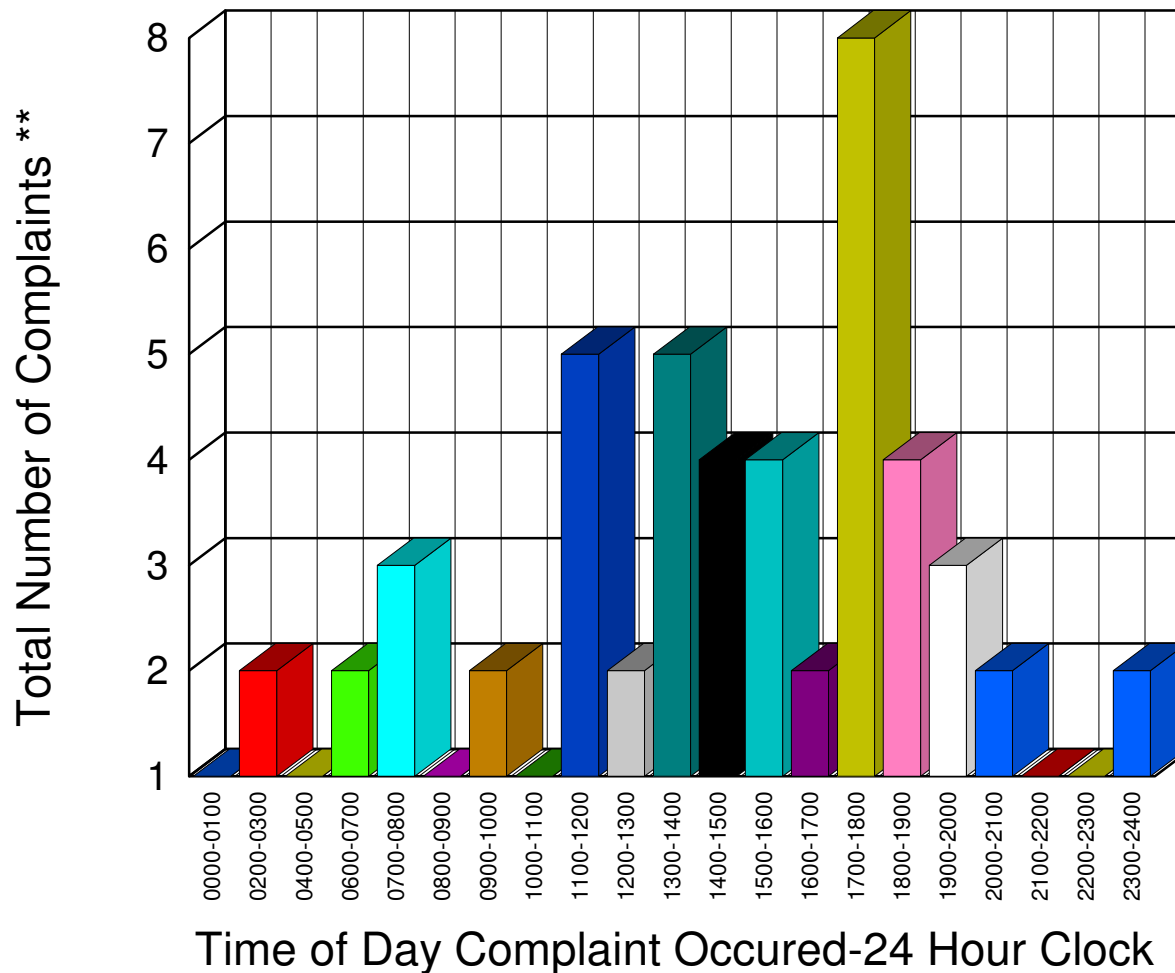
Total **68**

\*\* Complaints taken by Muskegon Sheriff's Office

# Muskegon County Sheriff's Office

Listing of Offense Reports--Holton Township 03/02/2006 to 03/31/2006

0000-0100	1
0200-0300	2
0400-0500	1
0600-0700	2
0700-0800	3
0800-0900	1
0900-1000	2
1000-1100	1
1100-1200	5
1200-1300	2
1300-1400	5
1400-1500	4
1500-1600	4
1600-1700	2
1700-1800	8
1800-1900	4
1900-2000	3
2000-2100	2
2100-2200	1
2200-2300	1
2300-2400	2




---

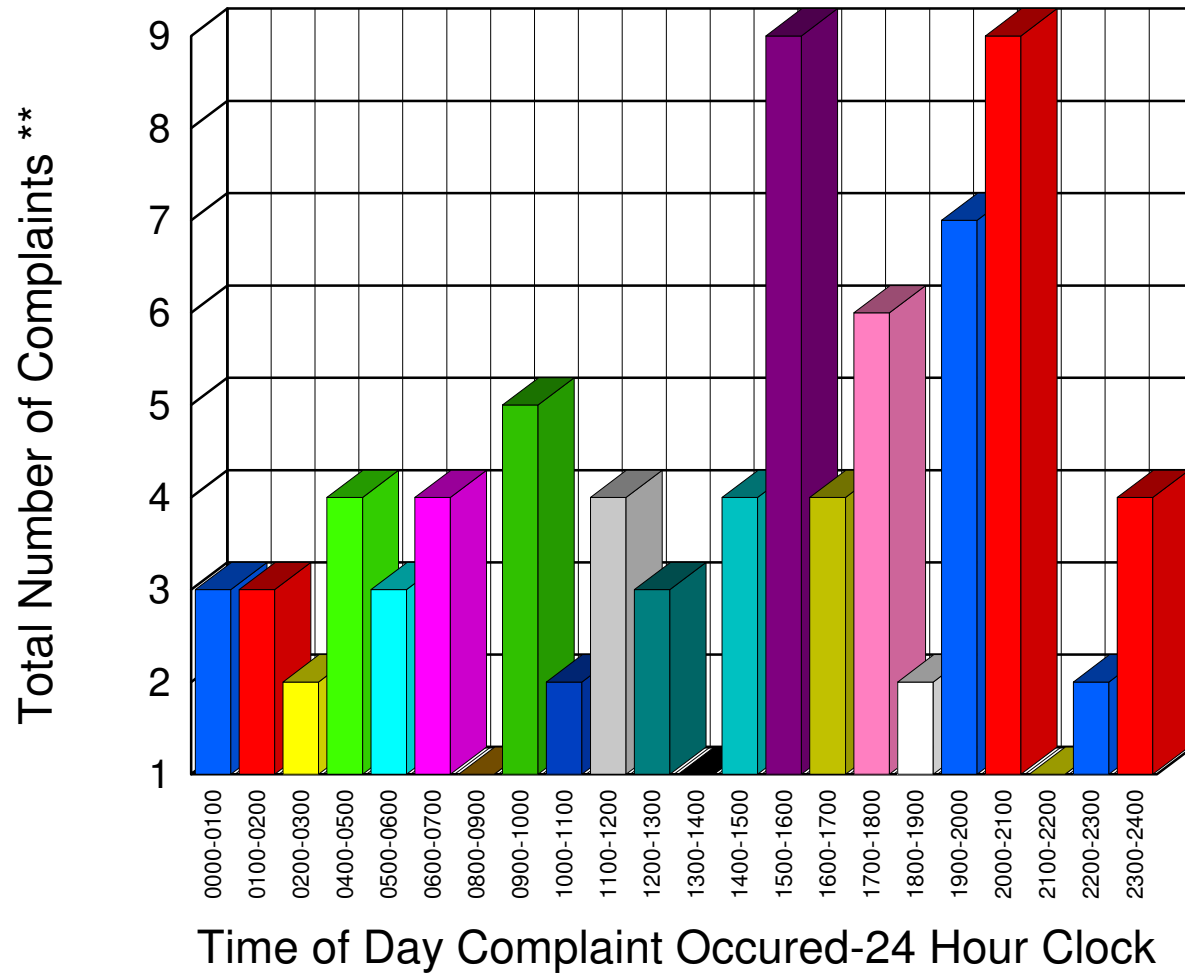
Total 56

\*\* Complaints taken by Muskegon Sheriff's Office

# Muskegon County Sheriff's Office

Listing of Offense Reports--Laketon Township 03/01/2006 to 03/31/2006

0000-0100	3
0100-0200	3
0200-0300	2
0400-0500	4
0500-0600	3
0600-0700	4
0800-0900	1
0900-1000	5
1000-1100	2
1100-1200	4
1200-1300	3
1300-1400	1
1400-1500	4
1500-1600	9
1600-1700	4
1700-1800	6
1800-1900	2
1900-2000	7
2000-2100	9
2100-2200	1
2200-2300	2
2300-2400	4




---

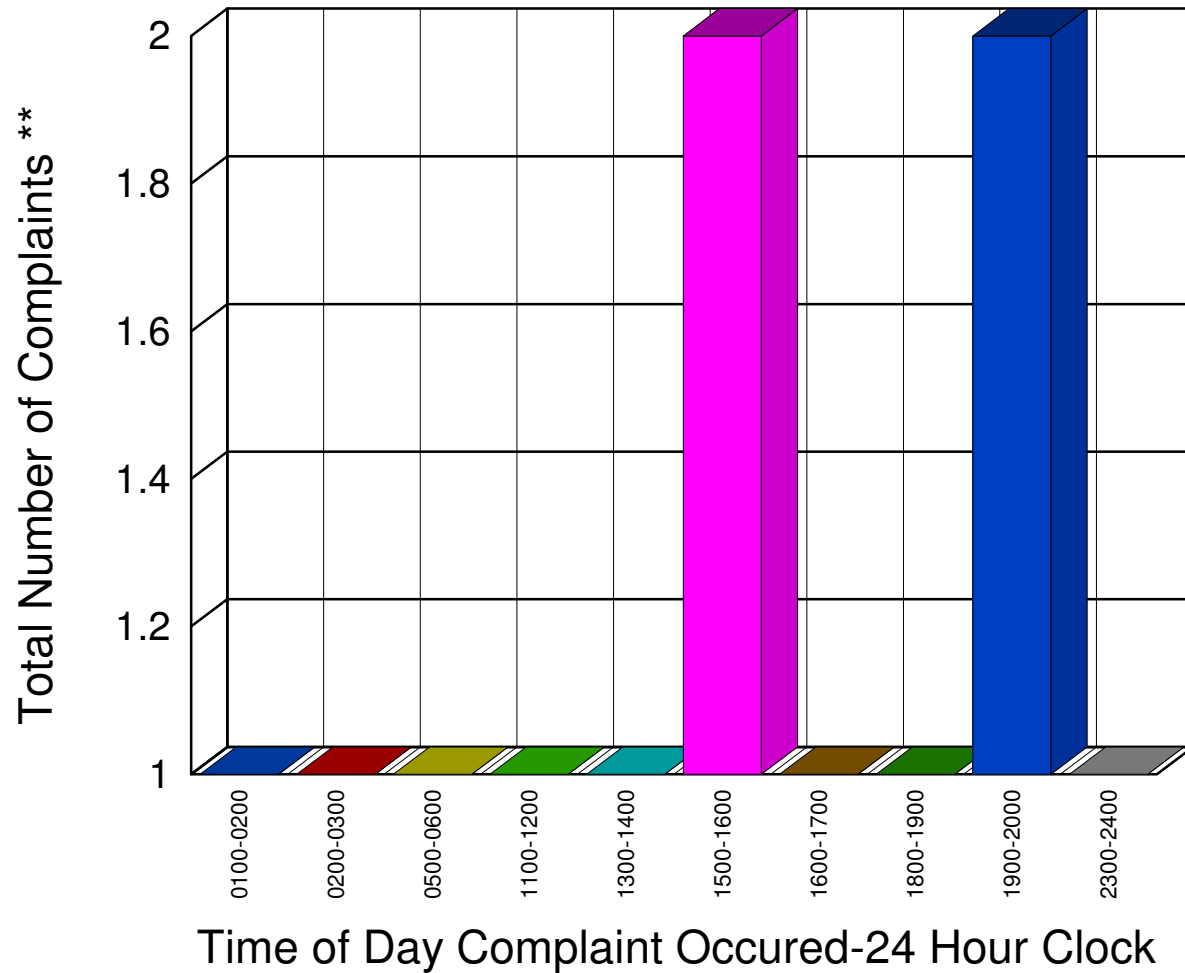
Total 83

\*\* Complaints taken by Muskegon Sheriff's Office

# Muskegon County Sheriff's Office

Listing of Offense Reports--Montague Township 03/03/2006 to 03/30/2006

0100-0200	1
0200-0300	1
0500-0600	1
1100-1200	1
1300-1400	1
1500-1600	2
1600-1700	1
1800-1900	1
1900-2000	2
2300-2400	1



---

---

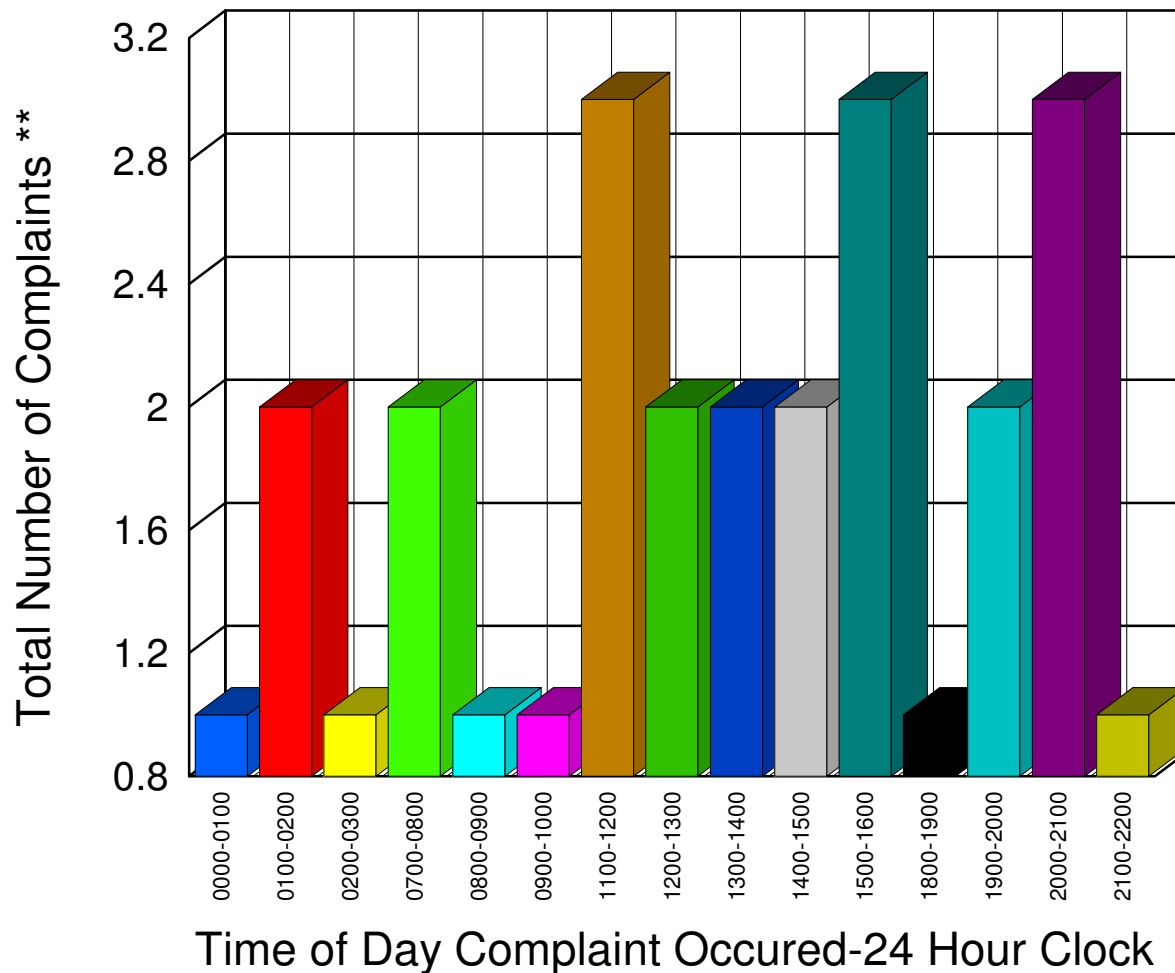
Total 12

\*\* Complaints taken by Muskegon Sheriff's Office

# Muskegon County Sheriff's Office

Listing of Offense Reports--Moorland Township 03/02/2006 to 03/31/2006

0000-0100	1
0100-0200	2
0200-0300	1
0700-0800	2
0800-0900	1
0900-1000	1
1100-1200	3
1200-1300	2
1300-1400	2
1400-1500	2
1500-1600	3
1800-1900	1
1900-2000	2
2000-2100	3
2100-2200	1




---

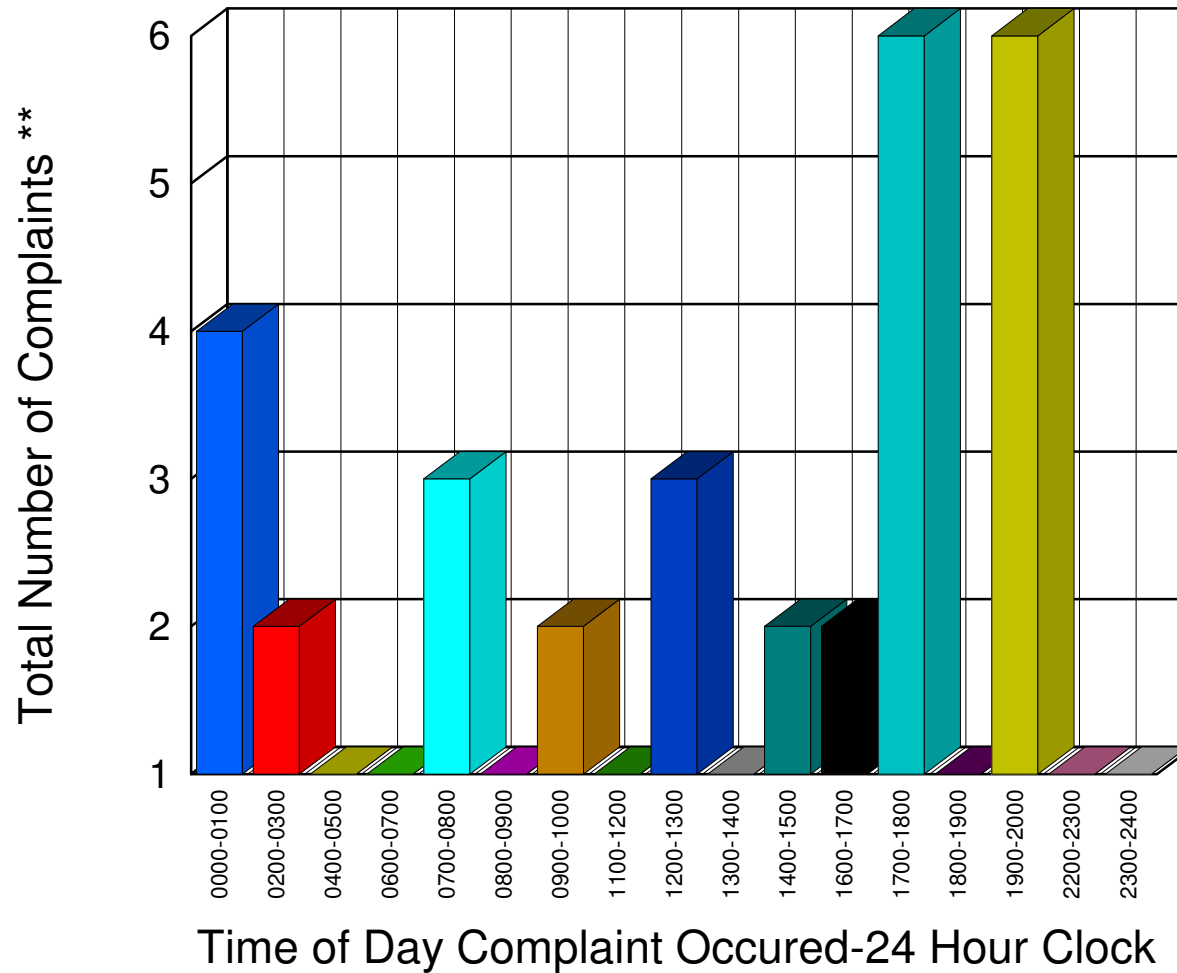
Total 27

\*\* Complaints taken by Muskegon Sheriff's Office

# Muskegon County Sheriff's Office

Listing of Offense Reports--Ravenna and Ravenna Township 03/01/2006 to 03/30/2006

0000-0100	4
0200-0300	2
0400-0500	1
0600-0700	1
0700-0800	3
0800-0900	1
0900-1000	2
1100-1200	1
1200-1300	3
1300-1400	1
1400-1500	2
1600-1700	2
1700-1800	6
1800-1900	1
1900-2000	6
2200-2300	1
2300-2400	1




---

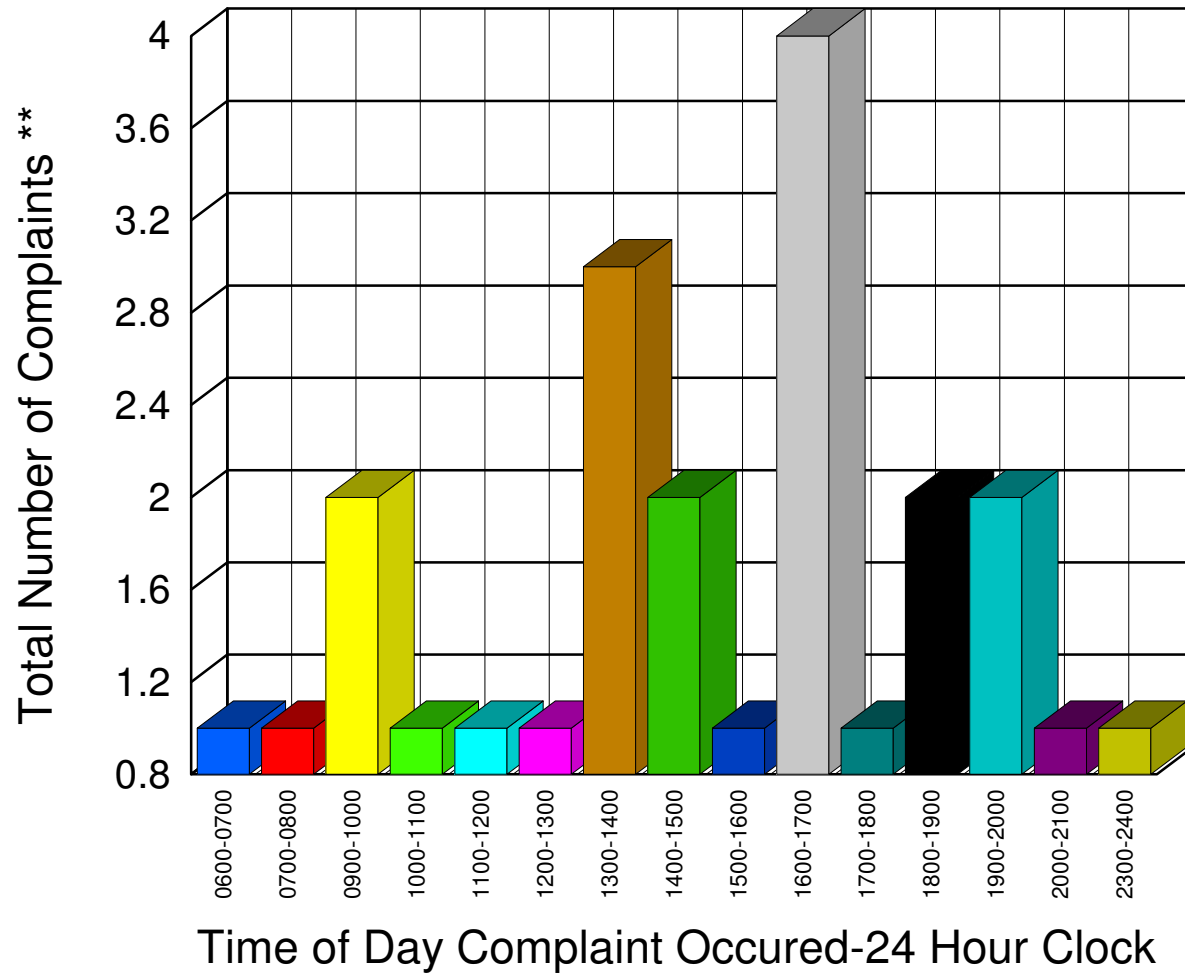
Total 38

\*\* Complaints taken by Muskegon Sheriff's Office

# Muskegon County Sheriff's Office

Listing of Offense Reports--Sullivan Township 03/01/2006 to 03/31/2006

0600-0700	1
0700-0800	1
0900-1000	2
1000-1100	1
1100-1200	1
1200-1300	1
1300-1400	3
1400-1500	2
1500-1600	1
1600-1700	4
1700-1800	1
1800-1900	2
1900-2000	2
2000-2100	1
2300-2400	1




---

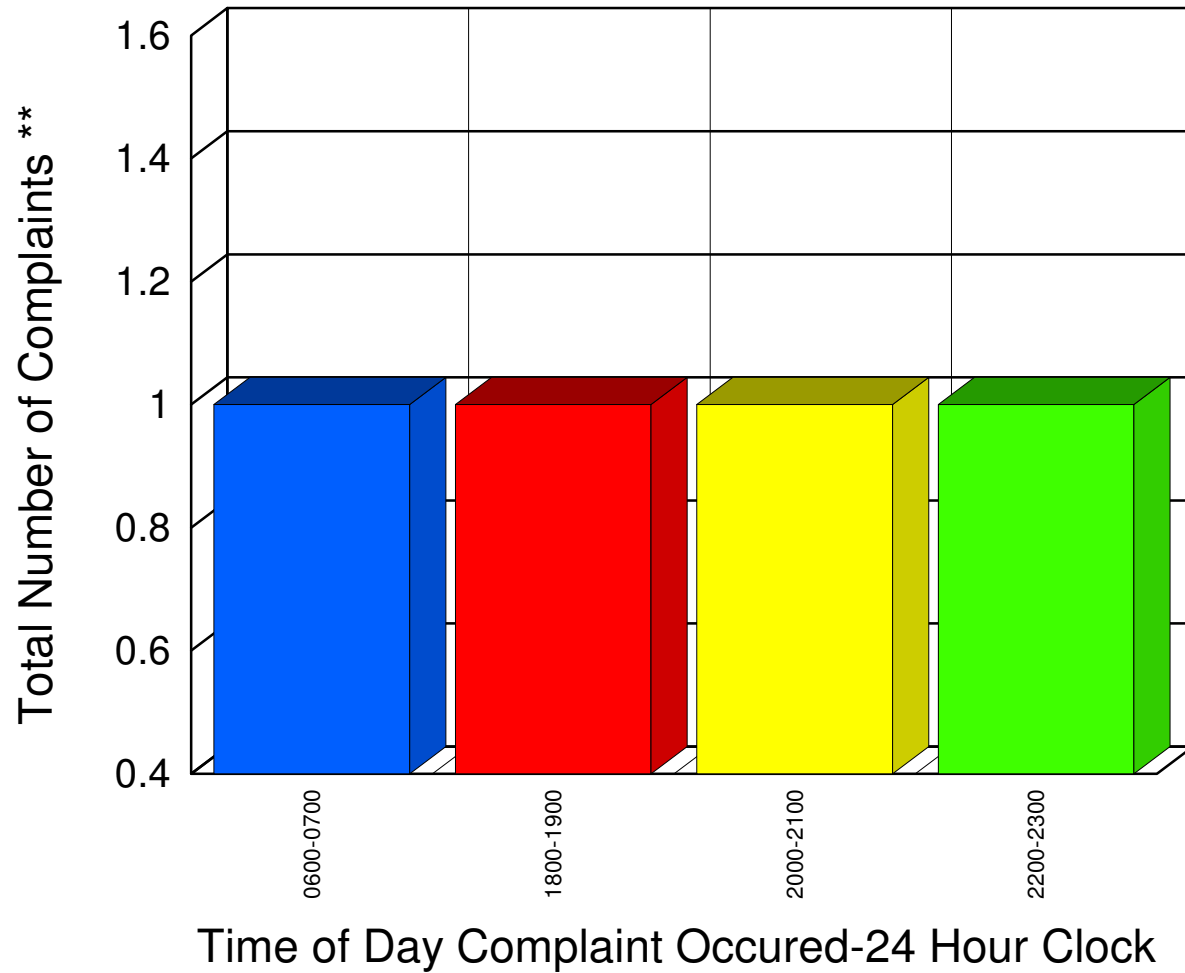
Total **24**

\*\* Complaints taken by Muskegon Sheriff's Office

# Muskegon County Sheriff's Office

Listing of Offense Reports--White River Township 03/04/2006 to 03/27/2006

<u>0600-0700</u>	<u>1</u>
<u>1800-1900</u>	<u>1</u>
<u>2000-2100</u>	<u>1</u>
<u>2200-2300</u>	<u>1</u>



---

---

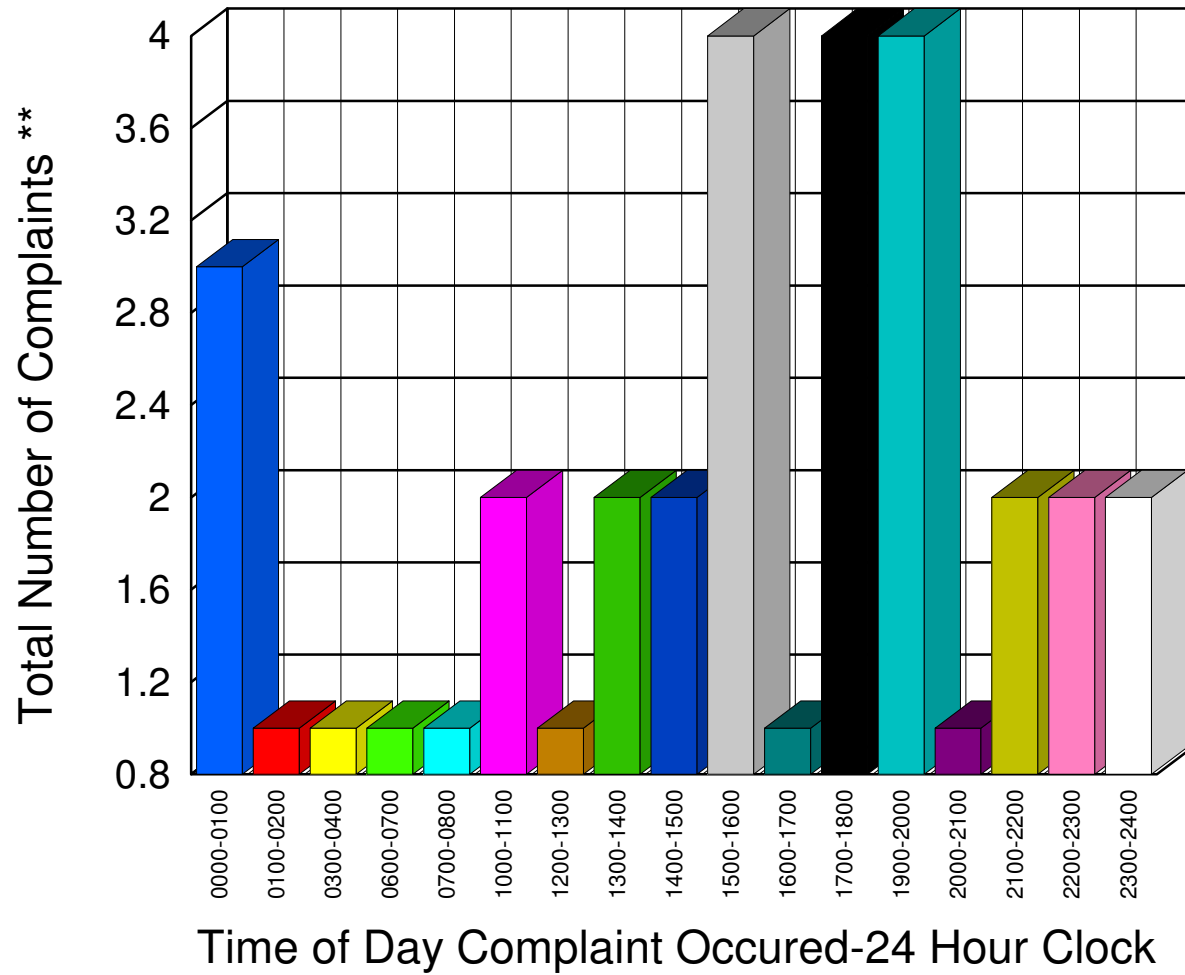
Total	4
-------	---

\*\* Complaints taken by Muskegon Sheriff's Office

# Muskegon County Sheriff's Office

Listing of Offense Reports--Whitehall Township 03/02/2006 to 03/30/2006

0000-0100	3
0100-0200	1
0300-0400	1
0600-0700	1
0700-0800	1
1000-1100	2
1200-1300	1
1300-1400	2
1400-1500	2
1500-1600	4
1600-1700	1
1700-1800	4
1900-2000	4
2000-2100	1
2100-2200	2
2200-2300	2
2300-2400	2




---

Total **34**

\*\* Complaints taken by Muskegon Sheriff's Office