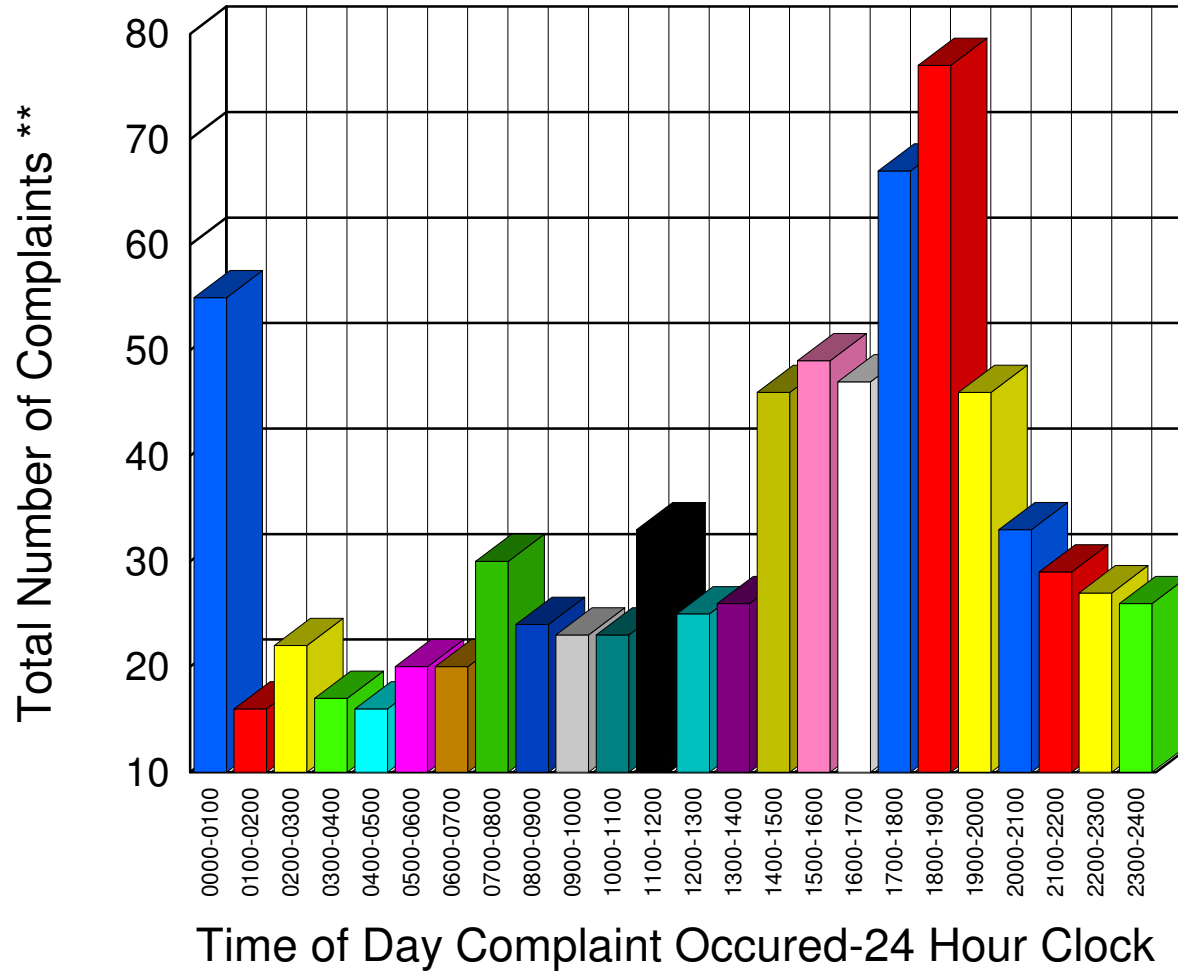


Muskegon County Sheriff's Office

Listing of Offense Reports-- 11/01/2008 00:00:00 to 11/30/2008 18:35:43

| | |
|-----------|----|
| 0000-0100 | 55 |
| 0100-0200 | 16 |
| 0200-0300 | 22 |
| 0300-0400 | 17 |
| 0400-0500 | 16 |
| 0500-0600 | 20 |
| 0600-0700 | 20 |
| 0700-0800 | 30 |
| 0800-0900 | 24 |
| 0900-1000 | 23 |
| 1000-1100 | 23 |
| 1100-1200 | 33 |
| 1200-1300 | 25 |
| 1300-1400 | 26 |
| 1400-1500 | 46 |
| 1500-1600 | 49 |
| 1600-1700 | 47 |
| 1700-1800 | 67 |
| 1800-1900 | 77 |
| 1900-2000 | 46 |
| 2000-2100 | 33 |
| 2100-2200 | 29 |
| 2200-2300 | 27 |
| 2300-2400 | 26 |



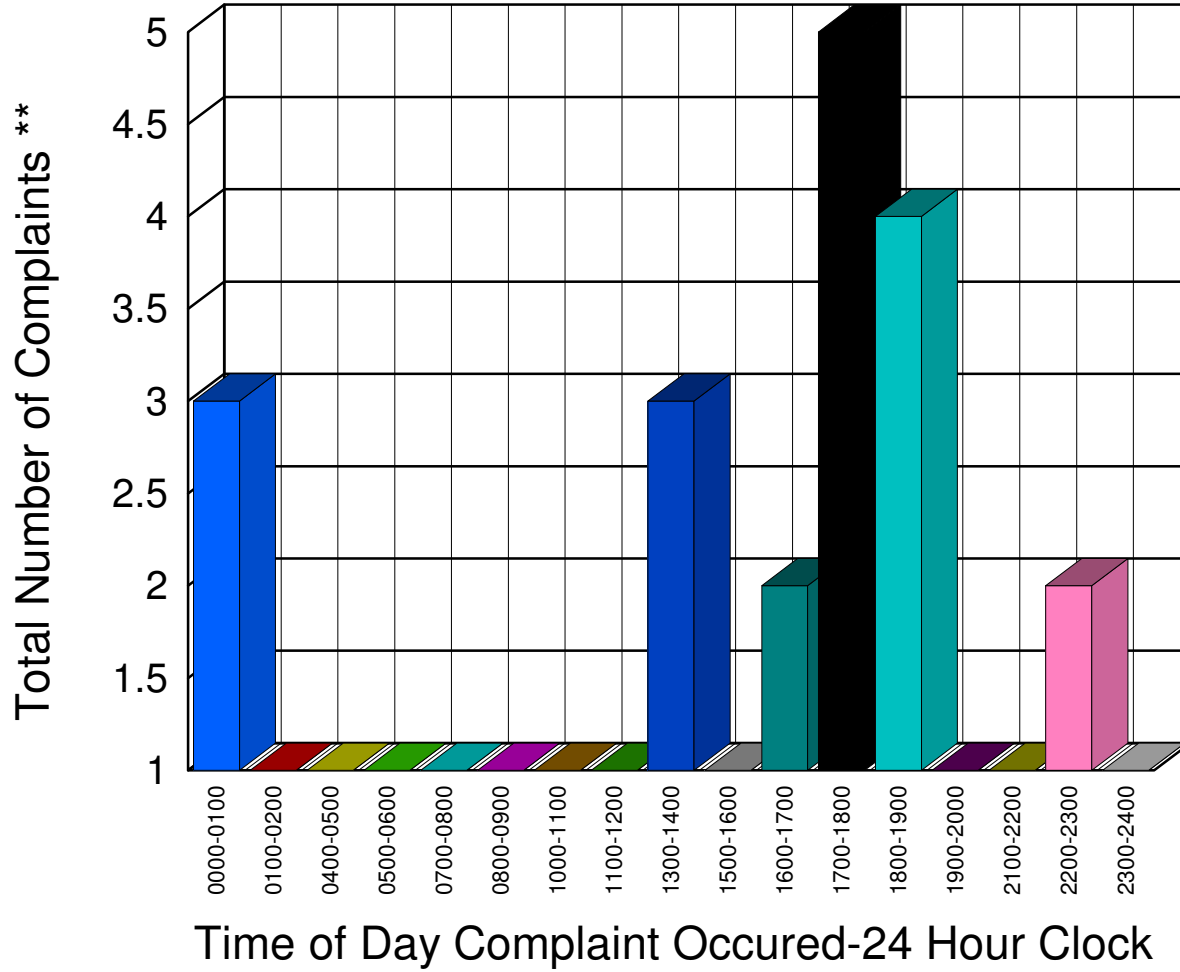
Total 797

** Complaints taken by Muskegon Sheriff's Office

Muskegon County Sheriff's Office

Listing of Offense Reports - Blue Lake Township - 11/01/2008 18:35:54 to 11/29/2008 04:59:11

| | |
|-----------|---|
| 0000-0100 | 3 |
| 0100-0200 | 1 |
| 0400-0500 | 1 |
| 0500-0600 | 1 |
| 0700-0800 | 1 |
| 0800-0900 | 1 |
| 1000-1100 | 1 |
| 1100-1200 | 1 |
| 1300-1400 | 3 |
| 1500-1600 | 1 |
| 1600-1700 | 2 |
| 1700-1800 | 5 |
| 1800-1900 | 4 |
| 1900-2000 | 1 |
| 2100-2200 | 1 |
| 2200-2300 | 2 |
| 2300-2400 | 1 |



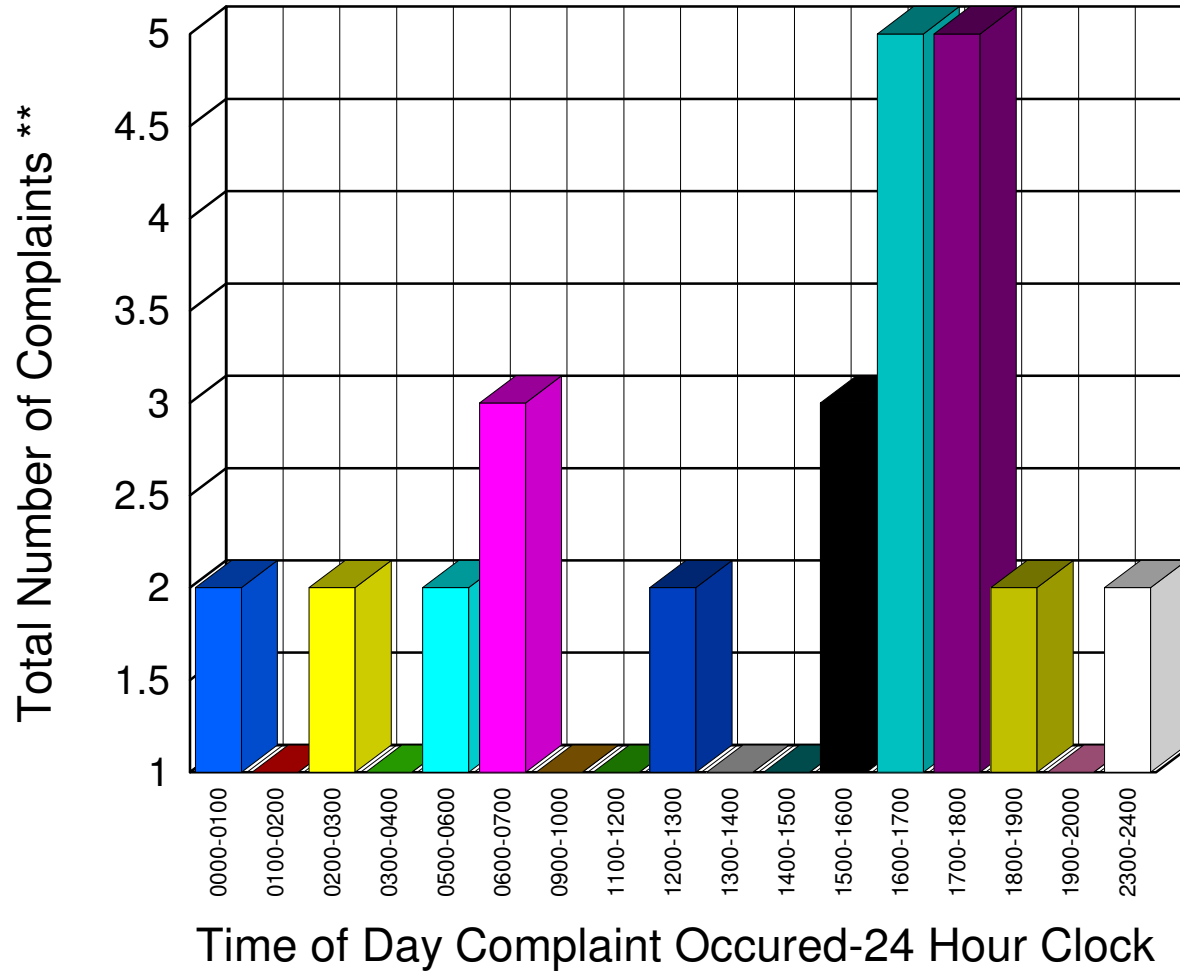
Total 30

** Complaints taken by Muskegon Sheriff's Office

Muskegon County Sheriff's Office

Listing of Offense Reports - Casnovia Village and Township - 11/01/2008 00:00:26 to 11/28/2008 17:57:59

| | |
|-----------|---|
| 0000-0100 | 2 |
| 0100-0200 | 1 |
| 0200-0300 | 2 |
| 0300-0400 | 1 |
| 0500-0600 | 2 |
| 0600-0700 | 3 |
| 0900-1000 | 1 |
| 1100-1200 | 1 |
| 1200-1300 | 2 |
| 1300-1400 | 1 |
| 1400-1500 | 1 |
| 1500-1600 | 3 |
| 1600-1700 | 5 |
| 1700-1800 | 5 |
| 1800-1900 | 2 |
| 1900-2000 | 1 |
| 2300-2400 | 2 |



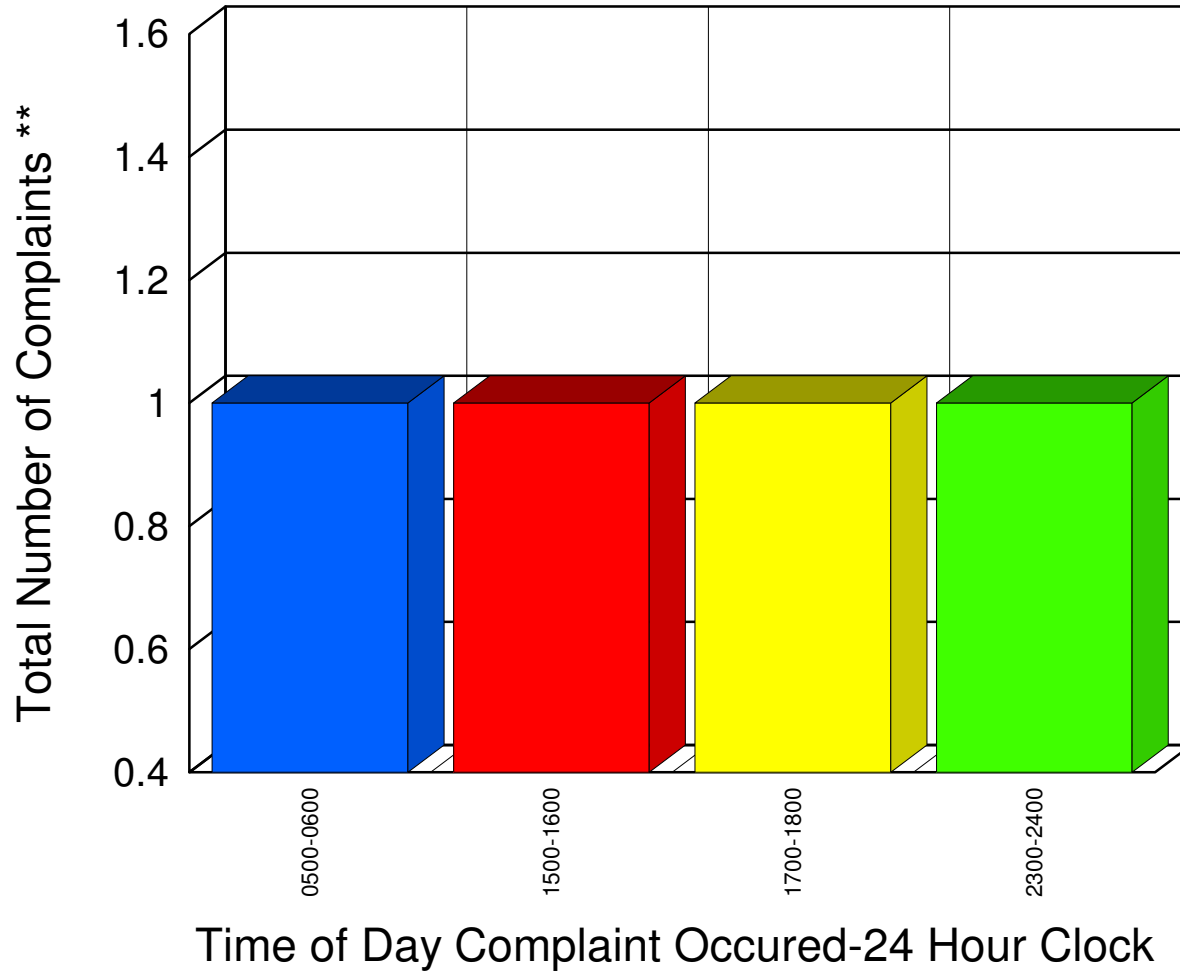
Total 35

** Complaints taken by Muskegon Sheriff's Office

Muskegon County Sheriff's Office

Listing of Offense Reports - Cedar Creek Township - 11/08/2008 05:45:50 to 11/23/2008 15:56:00

| | |
|------------------|----------|
| <u>0500-0600</u> | <u>1</u> |
| <u>1500-1600</u> | <u>1</u> |
| <u>1700-1800</u> | <u>1</u> |
| <u>2300-2400</u> | <u>1</u> |



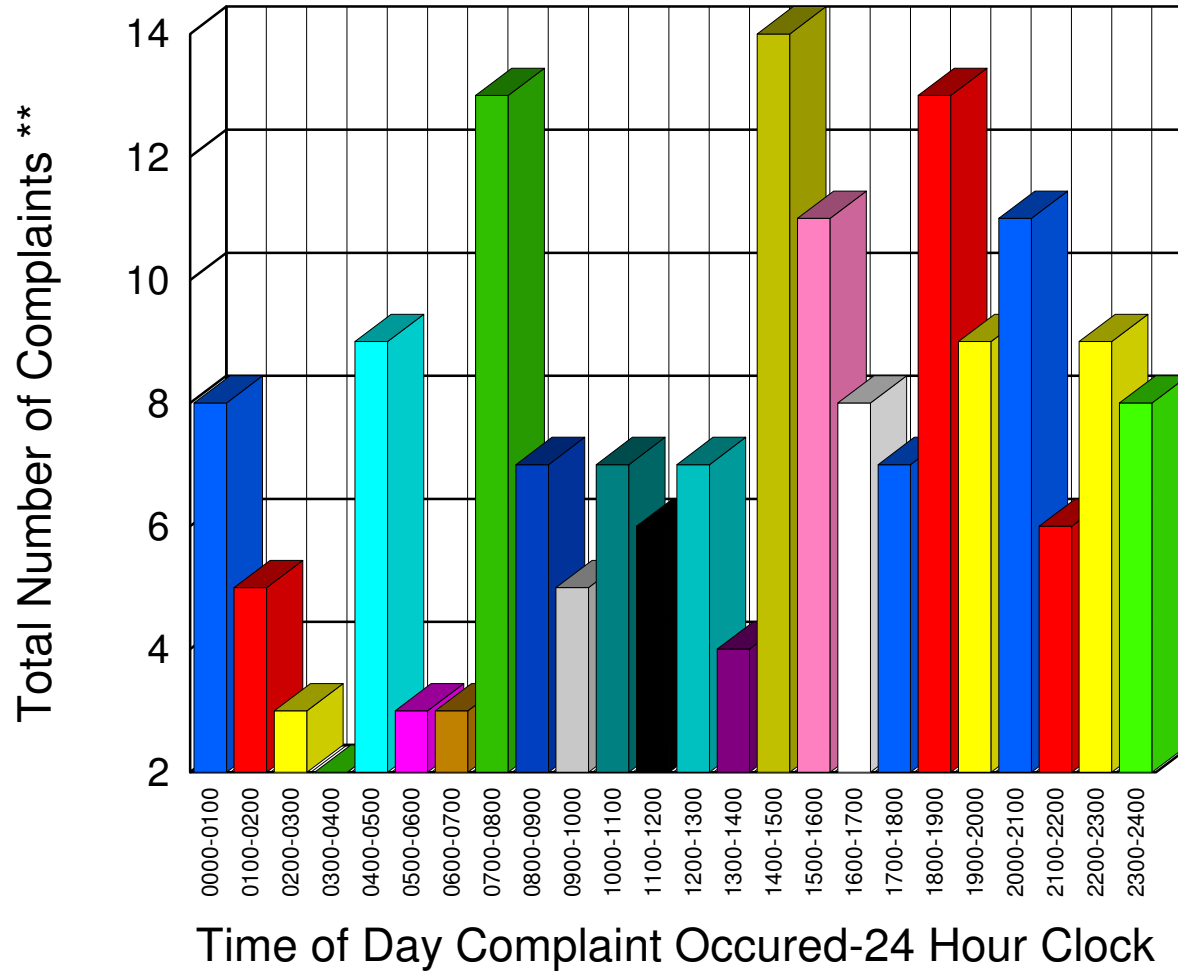
| | |
|-------|---|
| Total | 4 |
|-------|---|

** Complaints taken by Muskegon Sheriff's Office

Muskegon County Sheriff's Office

Listing of Offense Reports - Lakewood Club and Dalton Township - 11/01/2008 00:00:00 to 11/29/2008 20:54:20

| | |
|-----------|----|
| 0000-0100 | 8 |
| 0100-0200 | 5 |
| 0200-0300 | 3 |
| 0300-0400 | 2 |
| 0400-0500 | 9 |
| 0500-0600 | 3 |
| 0600-0700 | 3 |
| 0700-0800 | 13 |
| 0800-0900 | 7 |
| 0900-1000 | 5 |
| 1000-1100 | 7 |
| 1100-1200 | 6 |
| 1200-1300 | 7 |
| 1300-1400 | 4 |
| 1400-1500 | 14 |
| 1500-1600 | 11 |
| 1600-1700 | 8 |
| 1700-1800 | 7 |
| 1800-1900 | 13 |
| 1900-2000 | 9 |
| 2000-2100 | 11 |
| 2100-2200 | 6 |
| 2200-2300 | 9 |
| 2300-2400 | 8 |



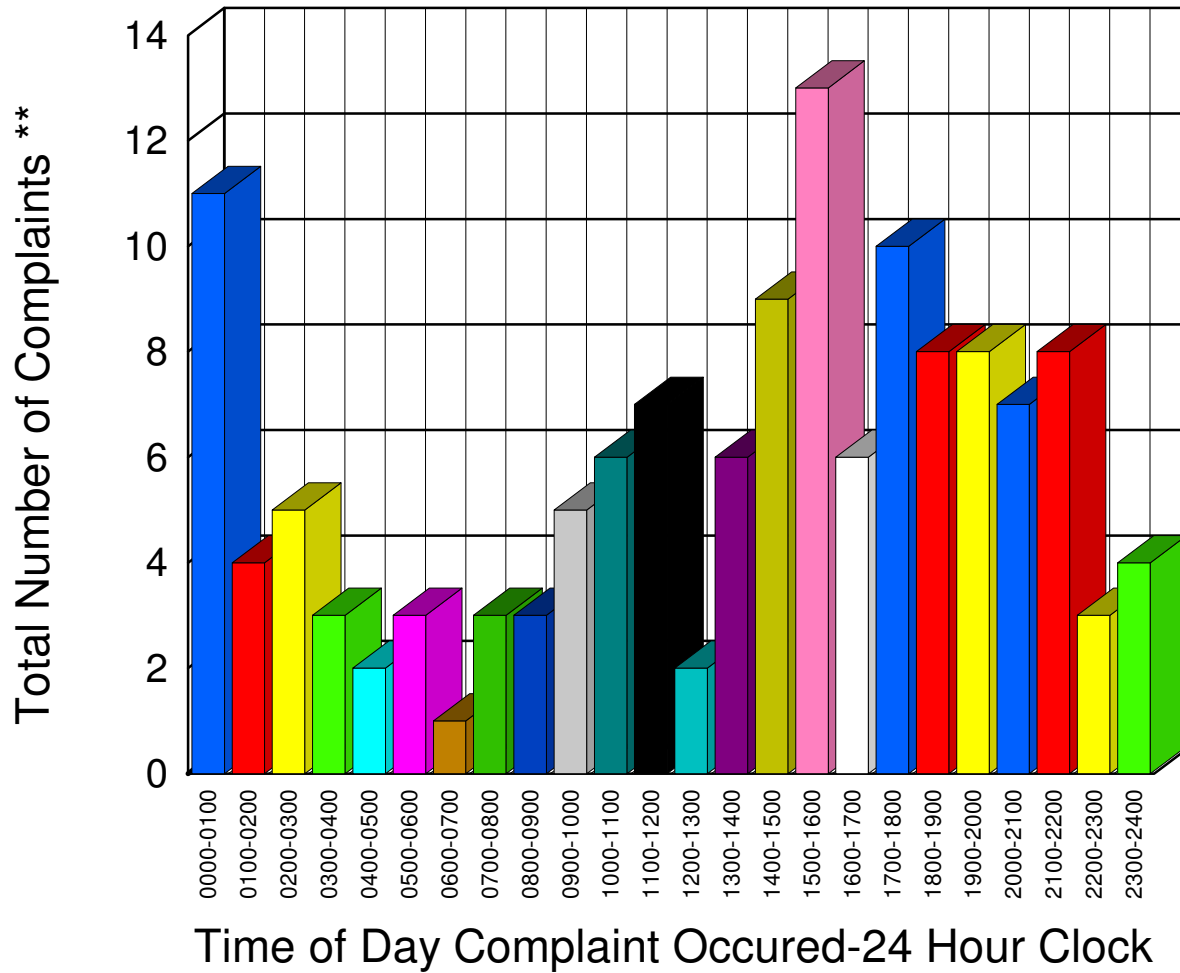
Total 178

** Complaints taken by Muskegon Sheriff's Office

Muskegon County Sheriff's Office

Listing of Offense Reports - Egelston Township - 11/01/2008 00:00:26 to 11/30/2008 00:46:59

| | |
|-----------|----|
| 0000-0100 | 11 |
| 0100-0200 | 4 |
| 0200-0300 | 5 |
| 0300-0400 | 3 |
| 0400-0500 | 2 |
| 0500-0600 | 3 |
| 0600-0700 | 1 |
| 0700-0800 | 3 |
| 0800-0900 | 3 |
| 0900-1000 | 5 |
| 1000-1100 | 6 |
| 1100-1200 | 7 |
| 1200-1300 | 2 |
| 1300-1400 | 6 |
| 1400-1500 | 9 |
| 1500-1600 | 13 |
| 1600-1700 | 6 |
| 1700-1800 | 10 |
| 1800-1900 | 8 |
| 1900-2000 | 8 |
| 2000-2100 | 7 |
| 2100-2200 | 8 |
| 2200-2300 | 3 |
| 2300-2400 | 4 |



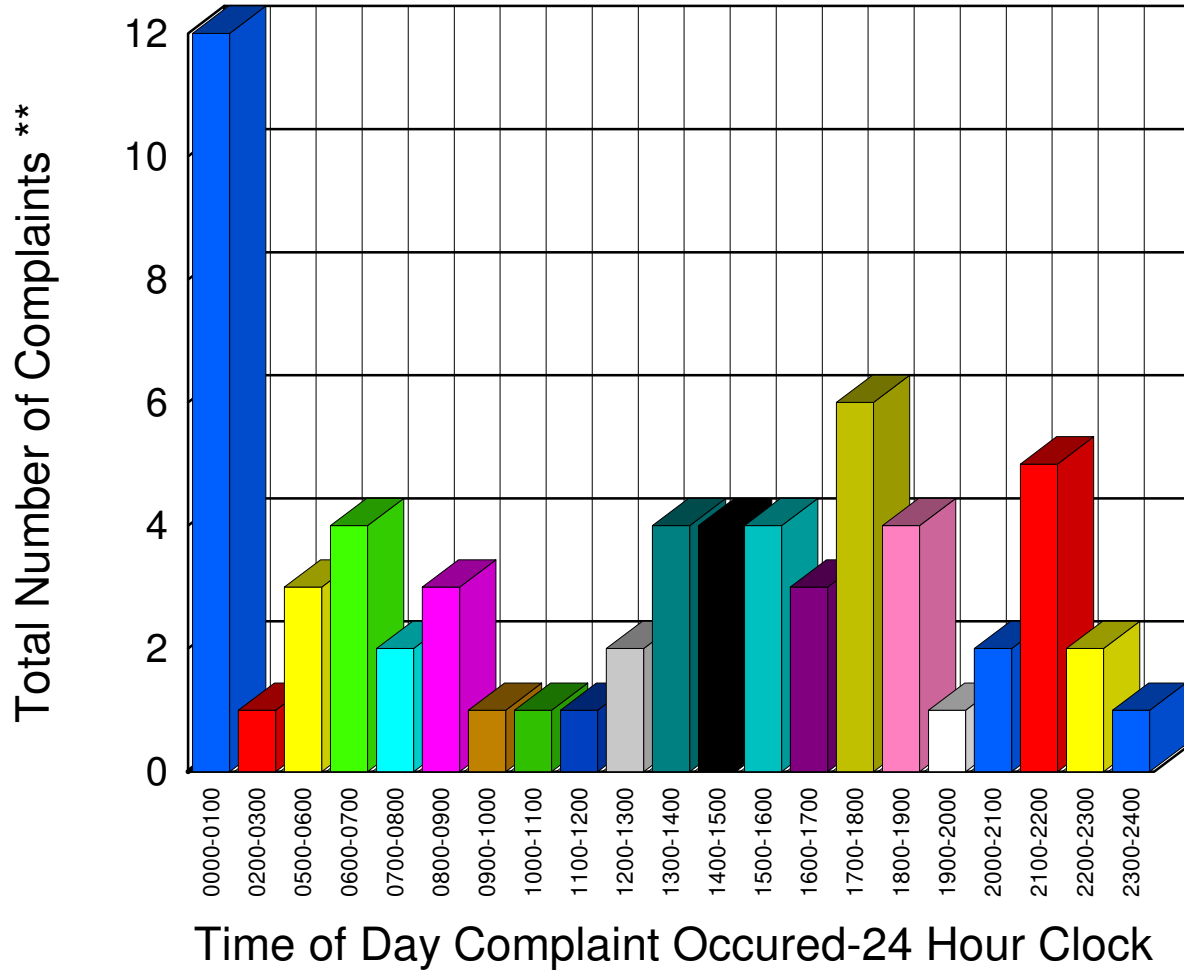
Total 137

** Complaints taken by Muskegon Sheriff's Office

Muskegon County Sheriff's Office

Listing of Offense Reports - Fruitland Township - 11/01/2008 00:00:00 to 11/30/2008 11:11:00

| | |
|-----------|----|
| 0000-0100 | 12 |
| 0200-0300 | 1 |
| 0500-0600 | 3 |
| 0600-0700 | 4 |
| 0700-0800 | 2 |
| 0800-0900 | 3 |
| 0900-1000 | 1 |
| 1000-1100 | 1 |
| 1100-1200 | 1 |
| 1200-1300 | 2 |
| 1300-1400 | 4 |
| 1400-1500 | 4 |
| 1500-1600 | 4 |
| 1600-1700 | 3 |
| 1700-1800 | 6 |
| 1800-1900 | 4 |
| 1900-2000 | 1 |
| 2000-2100 | 2 |
| 2100-2200 | 5 |
| 2200-2300 | 2 |
| 2300-2400 | 1 |



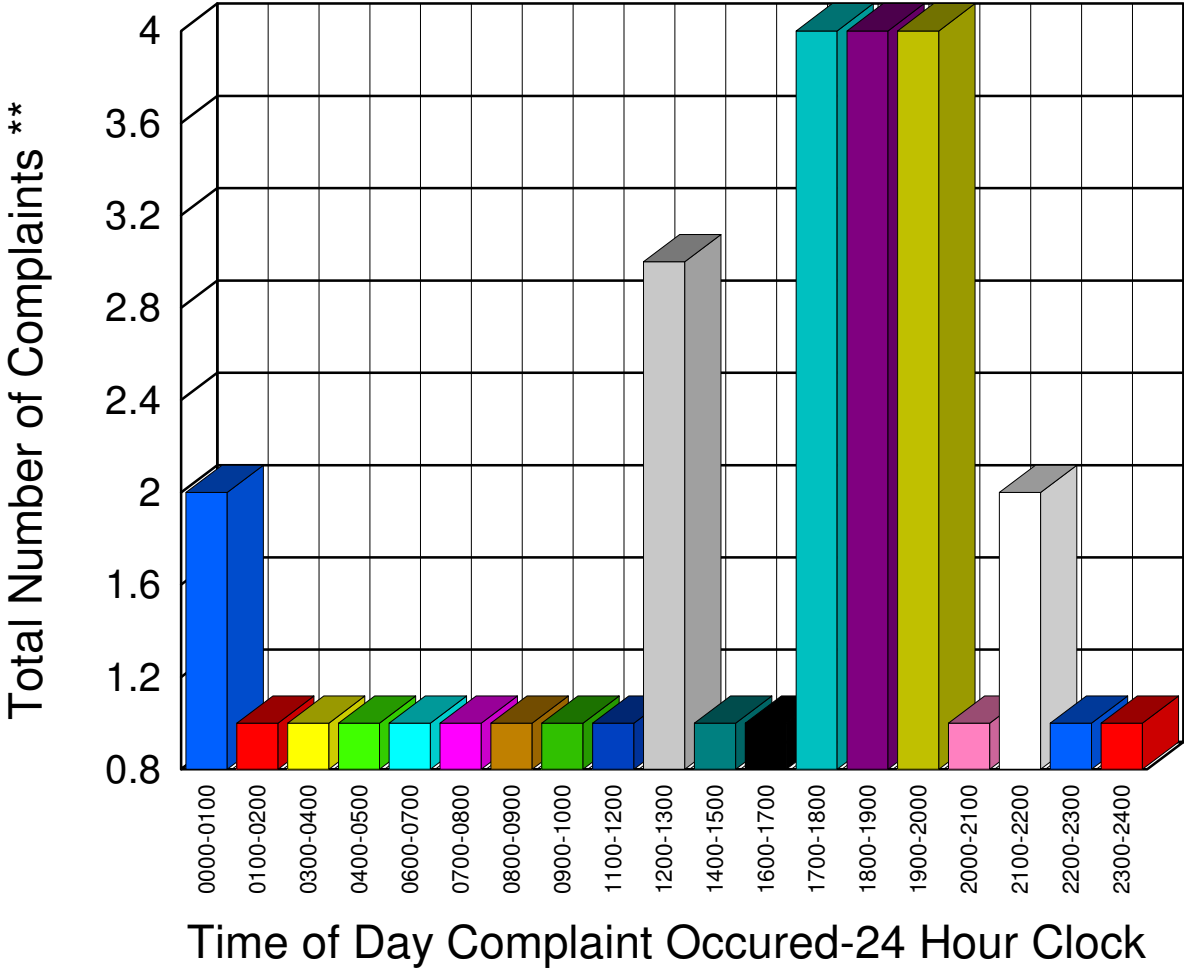
Total 66

** Complaints taken by Muskegon Sheriff's Office

Muskegon County Sheriff's Office

Listing of Offense Reports - Holton Township - 11/01/2008 04:23:11 to 11/27/2008 22:09:46

| | |
|-----------|---|
| 0000-0100 | 2 |
| 0100-0200 | 1 |
| 0300-0400 | 1 |
| 0400-0500 | 1 |
| 0600-0700 | 1 |
| 0700-0800 | 1 |
| 0800-0900 | 1 |
| 0900-1000 | 1 |
| 1100-1200 | 1 |
| 1200-1300 | 3 |
| 1400-1500 | 1 |
| 1600-1700 | 1 |
| 1700-1800 | 4 |
| 1800-1900 | 4 |
| 1900-2000 | 4 |
| 2000-2100 | 1 |
| 2100-2200 | 2 |
| 2200-2300 | 1 |
| 2300-2400 | 1 |



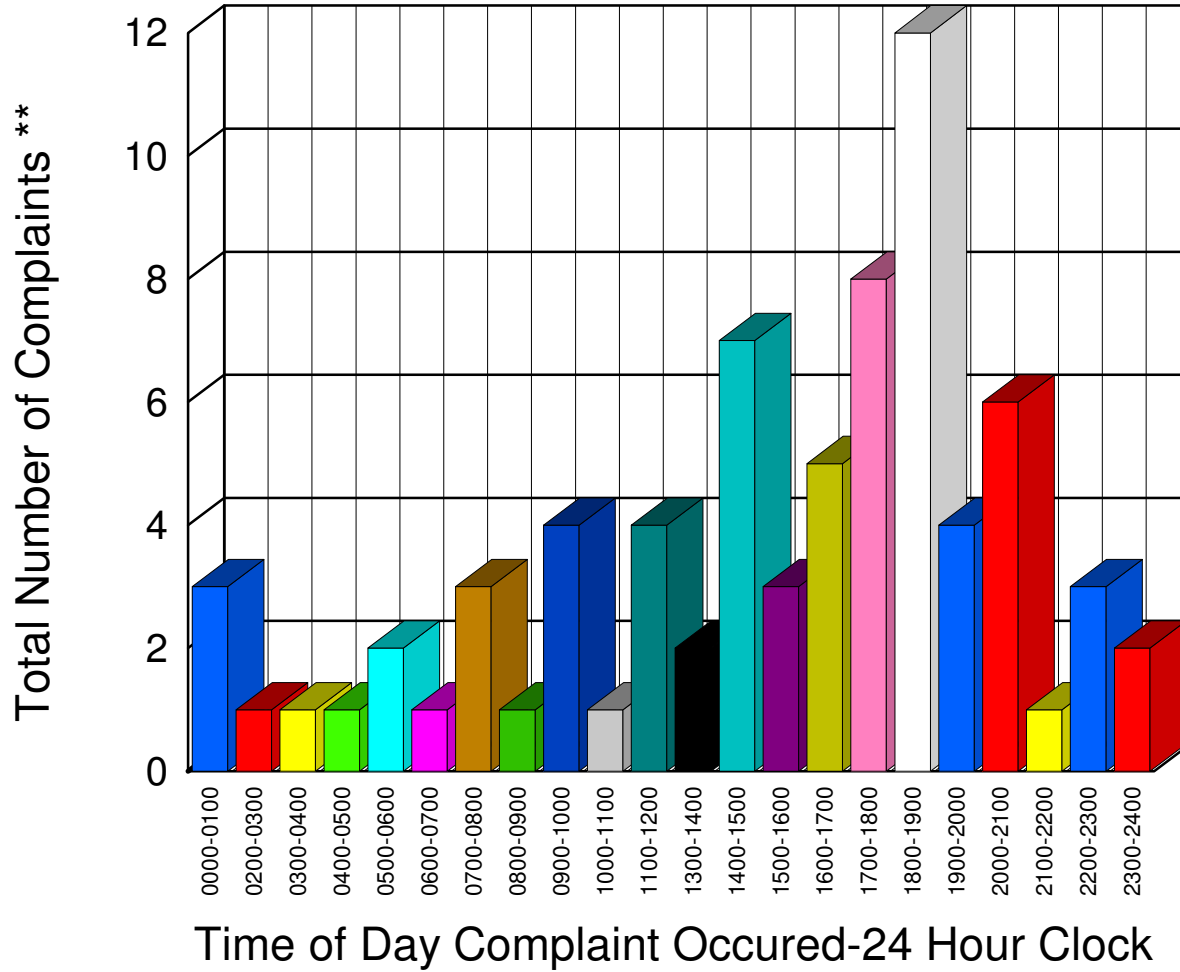
Total 32

** Complaints taken by Muskegon Sheriff's Office

Muskegon County Sheriff's Office

Listing of Offense Reports - Laketon Township - 11/01/2008 14:44:00 to 11/30/2008 11:18:00

| | |
|-----------|----|
| 0000-0100 | 3 |
| 0200-0300 | 1 |
| 0300-0400 | 1 |
| 0400-0500 | 1 |
| 0500-0600 | 2 |
| 0600-0700 | 1 |
| 0700-0800 | 3 |
| 0800-0900 | 1 |
| 0900-1000 | 4 |
| 1000-1100 | 1 |
| 1100-1200 | 4 |
| 1300-1400 | 2 |
| 1400-1500 | 7 |
| 1500-1600 | 3 |
| 1600-1700 | 5 |
| 1700-1800 | 8 |
| 1800-1900 | 12 |
| 1900-2000 | 4 |
| 2000-2100 | 6 |
| 2100-2200 | 1 |
| 2200-2300 | 3 |
| 2300-2400 | 2 |



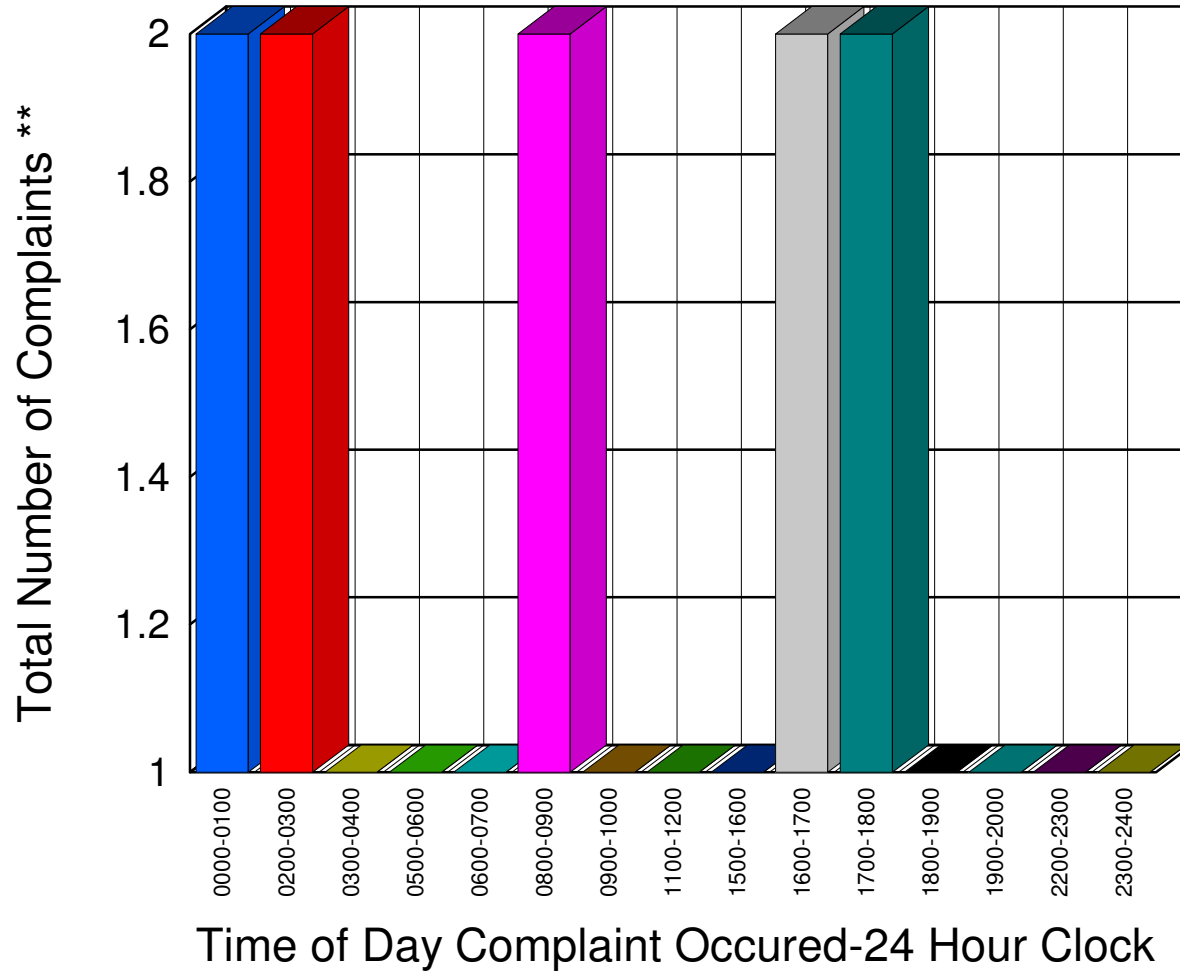
Total 75

** Complaints taken by Muskegon Sheriff's Office

Muskegon County Sheriff's Office

Listing of Offense Reports - Montague Township - 11/01/2008 16:20:44 to 11/27/2008 15:15:14

| | |
|-----------|---|
| 0000-0100 | 2 |
| 0200-0300 | 2 |
| 0300-0400 | 1 |
| 0500-0600 | 1 |
| 0600-0700 | 1 |
| 0800-0900 | 2 |
| 0900-1000 | 1 |
| 1100-1200 | 1 |
| 1500-1600 | 1 |
| 1600-1700 | 2 |
| 1700-1800 | 2 |
| 1800-1900 | 1 |
| 1900-2000 | 1 |
| 2200-2300 | 1 |
| 2300-2400 | 1 |



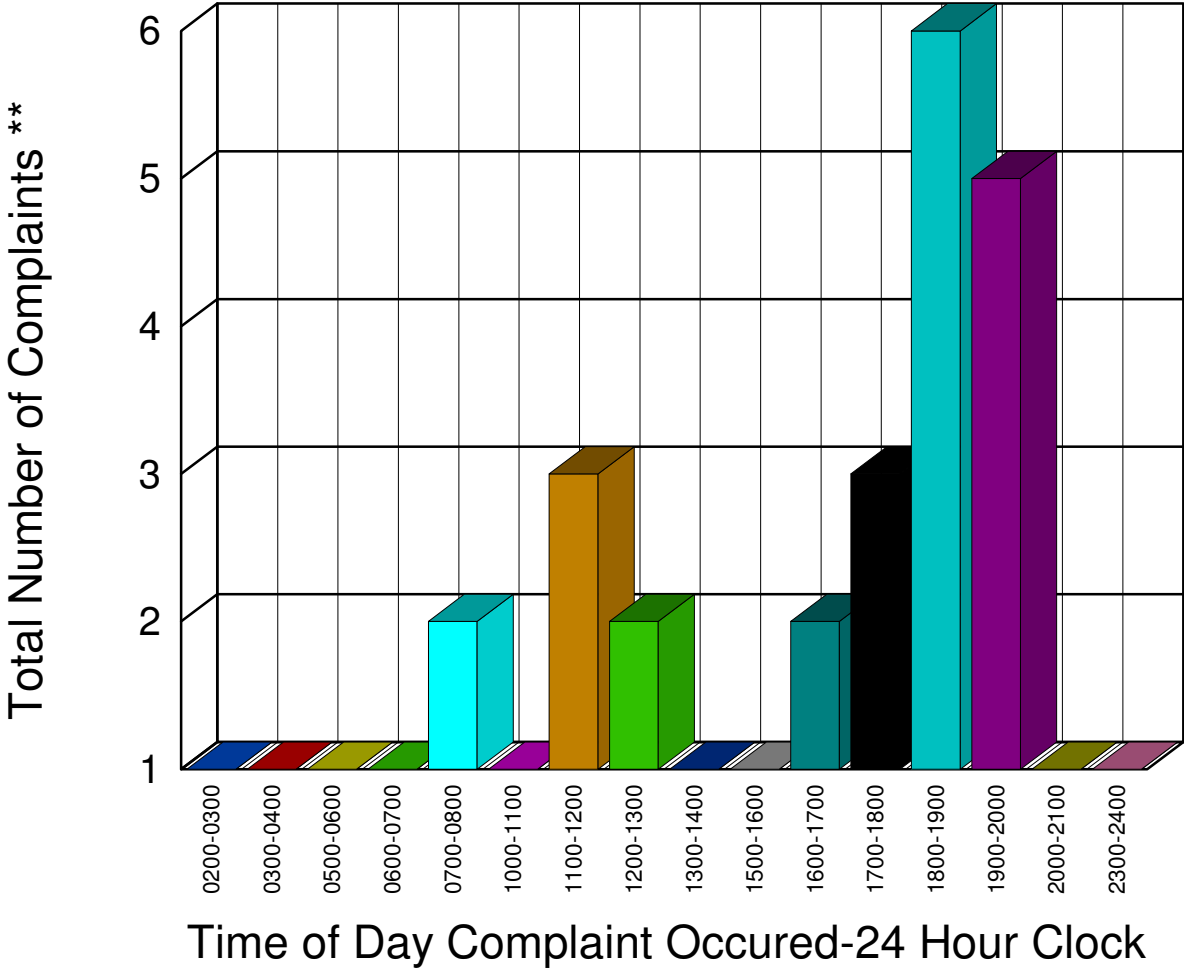
| | |
|-------|----|
| Total | 20 |
|-------|----|

** Complaints taken by Muskegon Sheriff's Office

Muskegon County Sheriff's Office

Listing of Offense Reports - Moorland Township - 11/01/2008 19:00:00 to 11/29/2008 03:30:00

| | |
|-----------|---|
| 0200-0300 | 1 |
| 0300-0400 | 1 |
| 0500-0600 | 1 |
| 0600-0700 | 1 |
| 0700-0800 | 2 |
| 1000-1100 | 1 |
| 1100-1200 | 3 |
| 1200-1300 | 2 |
| 1300-1400 | 1 |
| 1500-1600 | 1 |
| 1600-1700 | 2 |
| 1700-1800 | 3 |
| 1800-1900 | 6 |
| 1900-2000 | 5 |
| 2000-2100 | 1 |
| 2300-2400 | 1 |



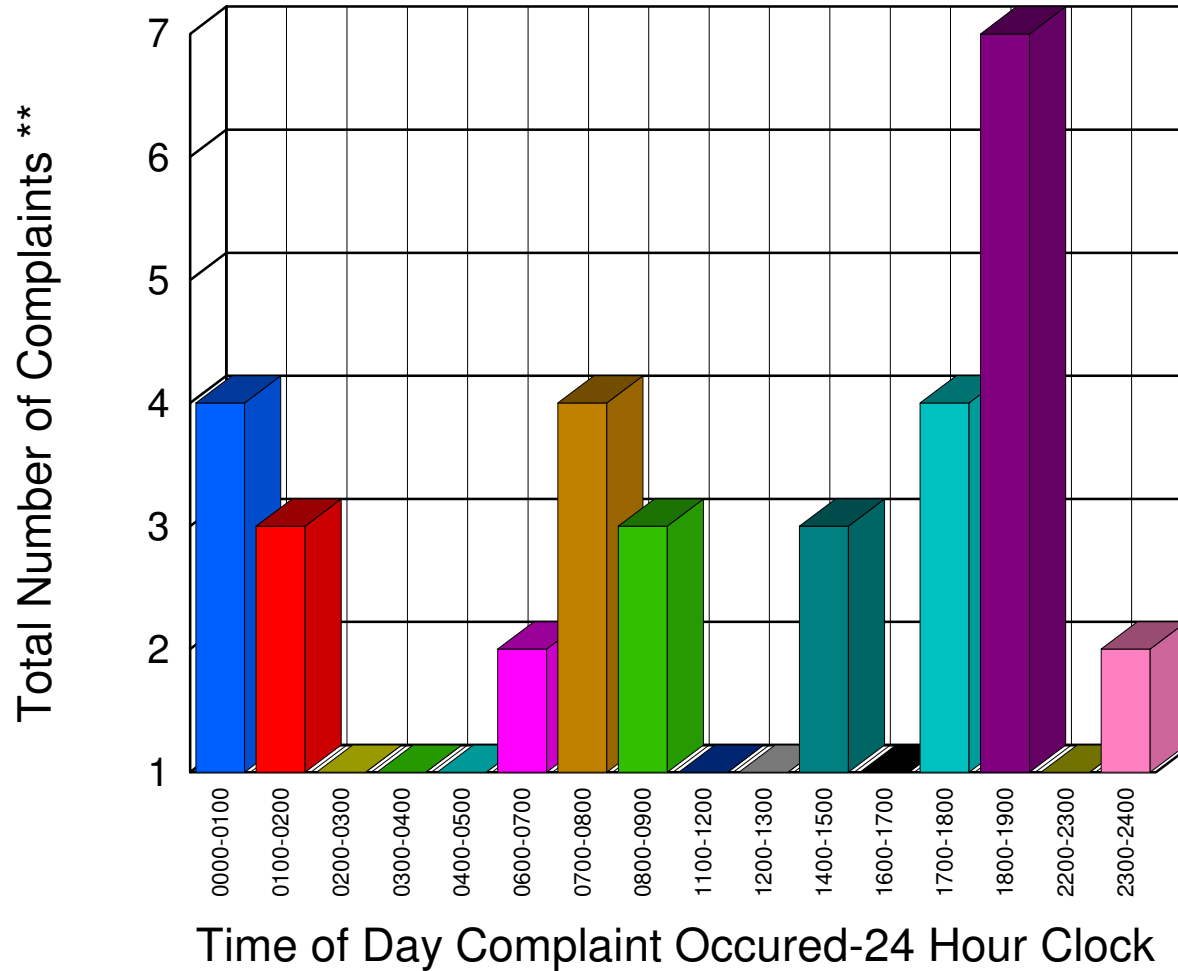
Total 32

** Complaints taken by Muskegon Sheriff's Office

Muskegon County Sheriff's Office

Listing of Offense Reports - Ravenna Village and Township - 11/01/2008 23:00:00 to 11/30/2008 04:09:59

| | |
|-----------|---|
| 0000-0100 | 4 |
| 0100-0200 | 3 |
| 0200-0300 | 1 |
| 0300-0400 | 1 |
| 0400-0500 | 1 |
| 0600-0700 | 2 |
| 0700-0800 | 4 |
| 0800-0900 | 3 |
| 1100-1200 | 1 |
| 1200-1300 | 1 |
| 1400-1500 | 3 |
| 1600-1700 | 1 |
| 1700-1800 | 4 |
| 1800-1900 | 7 |
| 2200-2300 | 1 |
| 2300-2400 | 2 |



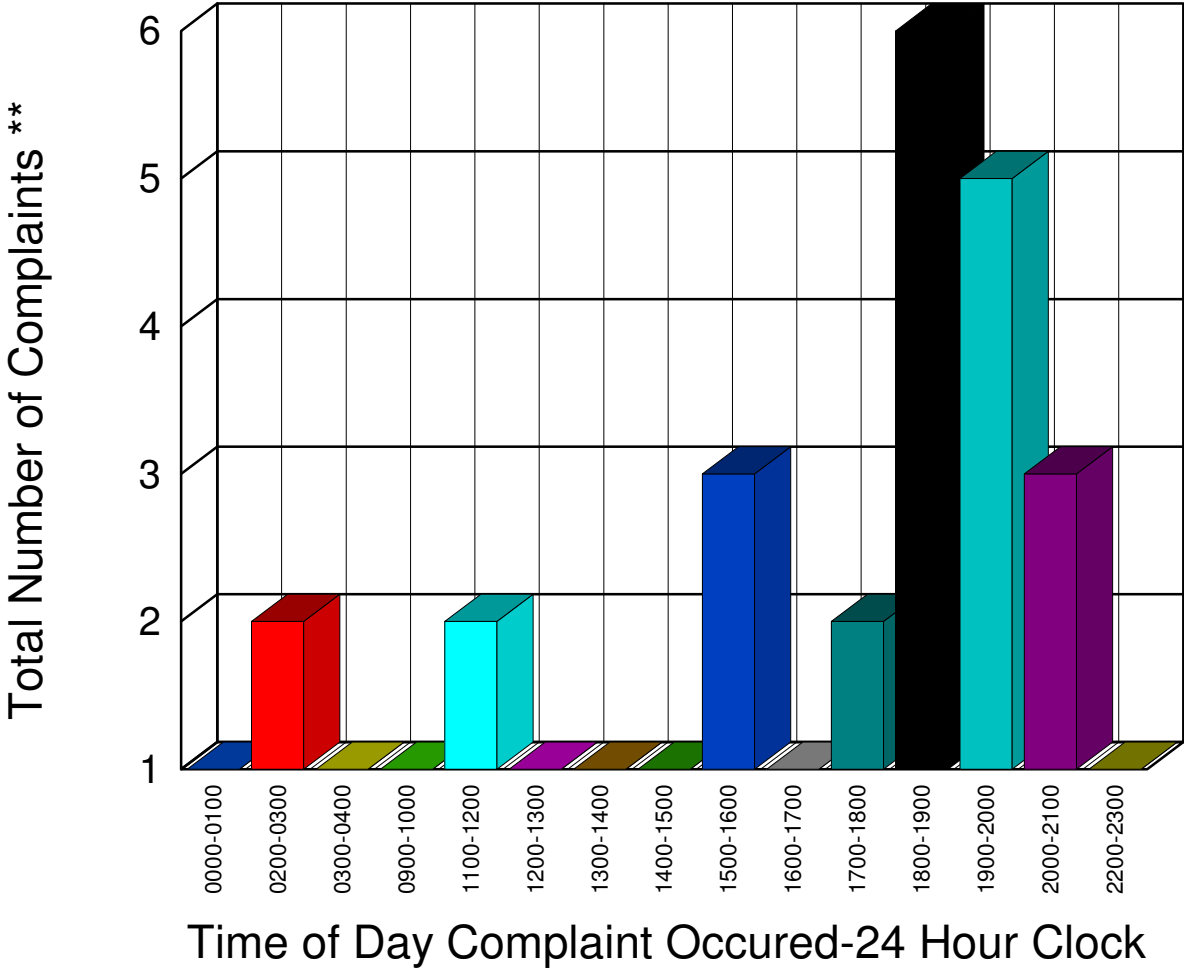
Total **39**

** Complaints taken by Muskegon Sheriff's Office

Muskegon County Sheriff's Office

Listing of Offense Reports - Sullivan Township - 11/01/2008 00:48:45 to 11/30/2008 18:35:43

| | |
|-----------|---|
| 0000-0100 | 1 |
| 0200-0300 | 2 |
| 0300-0400 | 1 |
| 0900-1000 | 1 |
| 1100-1200 | 2 |
| 1200-1300 | 1 |
| 1300-1400 | 1 |
| 1400-1500 | 1 |
| 1500-1600 | 3 |
| 1600-1700 | 1 |
| 1700-1800 | 2 |
| 1800-1900 | 6 |
| 1900-2000 | 5 |
| 2000-2100 | 3 |
| 2200-2300 | 1 |



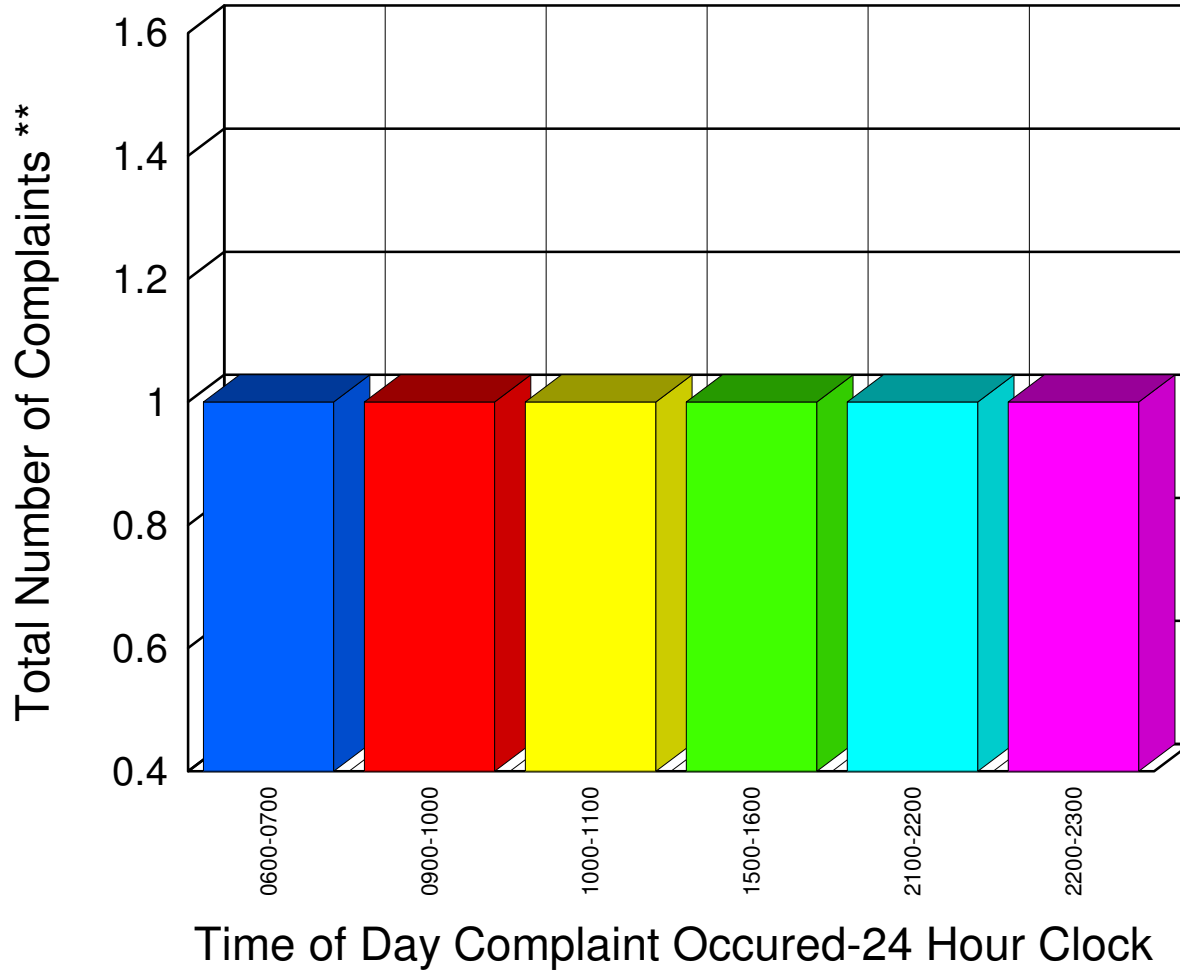
| | |
|-------|----|
| Total | 31 |
|-------|----|

** Complaints taken by Muskegon Sheriff's Office

Muskegon County Sheriff's Office

Listing of Offense Reports - White River Township - 11/04/2008 06:45:00 to 11/26/2008 10:48:00

| | |
|------------------|----------|
| <u>0600-0700</u> | <u>1</u> |
| <u>0900-1000</u> | <u>1</u> |
| <u>1000-1100</u> | <u>1</u> |
| <u>1500-1600</u> | <u>1</u> |
| <u>2100-2200</u> | <u>1</u> |
| <u>2200-2300</u> | <u>1</u> |



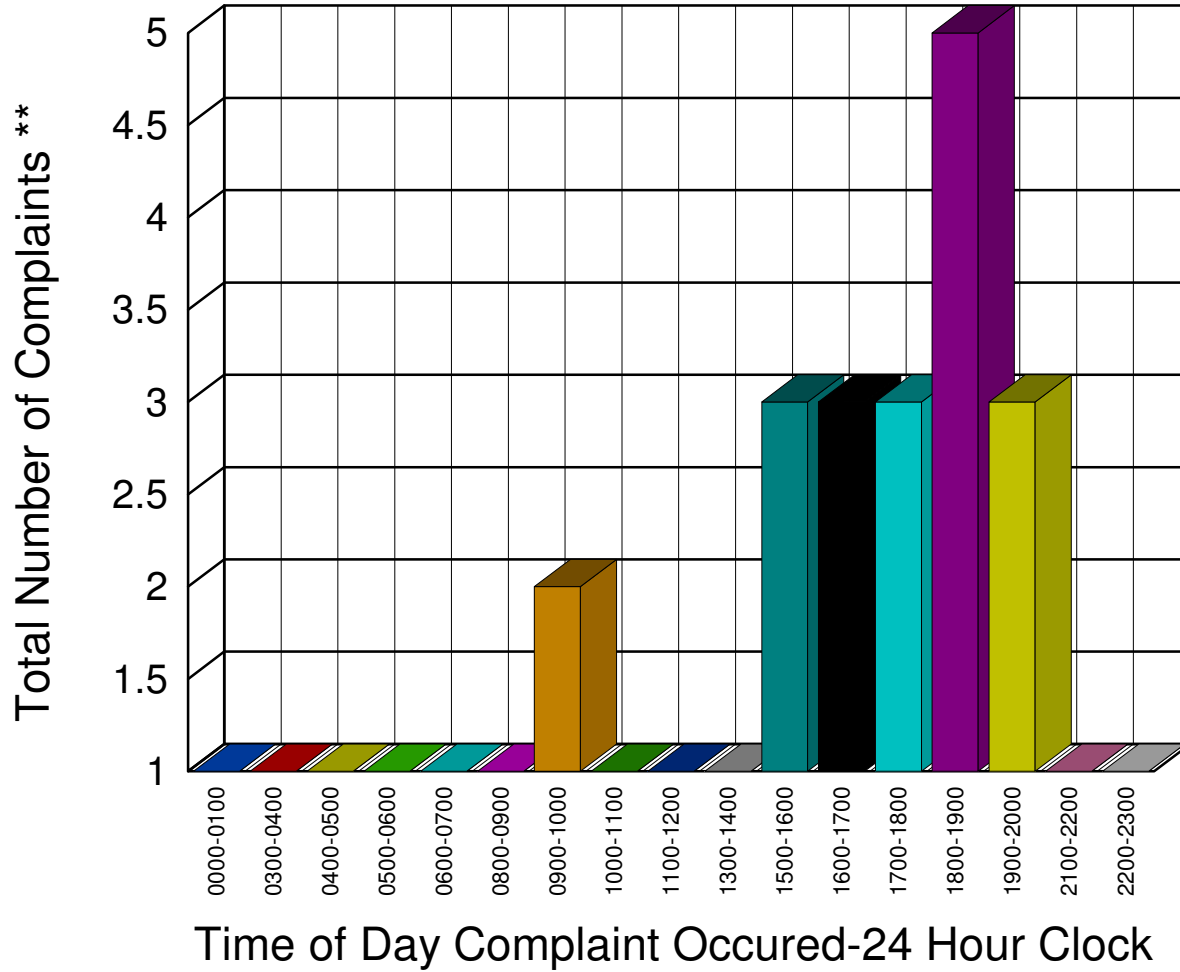
| | |
|-------|---|
| Total | 6 |
|-------|---|

** Complaints taken by Muskegon Sheriff's Office

Muskegon County Sheriff's Office

Listing of Offense Reports - Whitehall Township - 11/01/2008 00:00:00 to 11/29/2008 19:17:07

| | |
|-----------|---|
| 0000-0100 | 1 |
| 0300-0400 | 1 |
| 0400-0500 | 1 |
| 0500-0600 | 1 |
| 0600-0700 | 1 |
| 0800-0900 | 1 |
| 0900-1000 | 2 |
| 1000-1100 | 1 |
| 1100-1200 | 1 |
| 1300-1400 | 1 |
| 1500-1600 | 3 |
| 1600-1700 | 3 |
| 1700-1800 | 3 |
| 1800-1900 | 5 |
| 1900-2000 | 3 |
| 2100-2200 | 1 |
| 2200-2300 | 1 |



Total 30

** Complaints taken by Muskegon Sheriff's Office